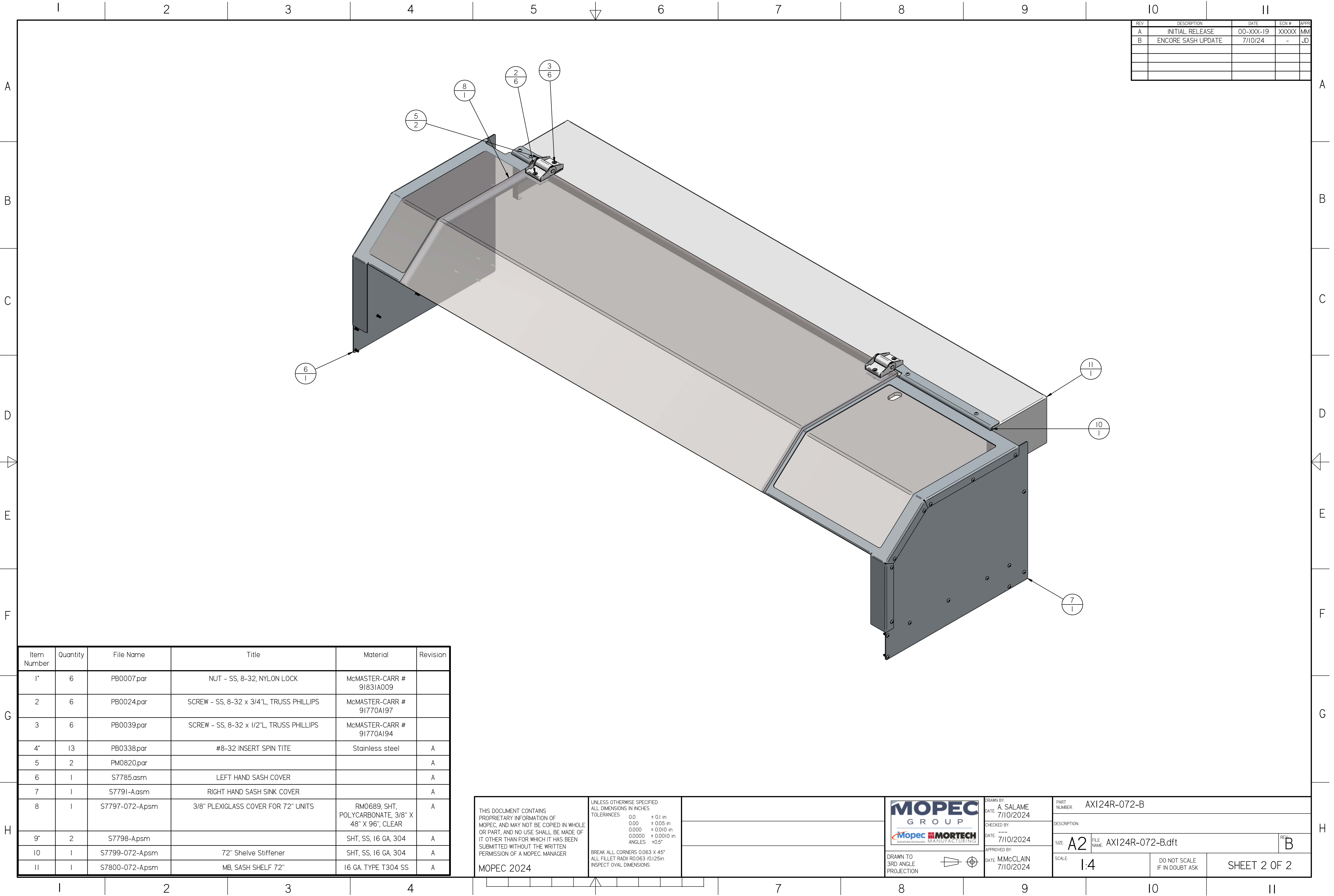


REV	DESCRIPTION	DATE	ECN #	APPR
A	INITIAL RELEASE	00-XXX-19	XXXXX	MM
B	ENCORE SASH UPDATE	7/10/24	-	JD

AXI24R-072-B.dft



REV	DESCRIPTION	DATE	ECN #	APPR
A	INITIAL RELEASE	00-XXX-19	XXXXX	MM
B	ENCORE SASH UPDATE	7/10/24	-	JD

Item Number	Quantity	File Name	Title	Material	Revision
1*	6	PB0007.par	NUT - SS, 8-32, NYLON LOCK	McMASTER-CARR # 91831A009	
2	6	PB0024.par	SCREW - SS, 8-32 x 3/4"L, TRUSS PHILLIPS	McMASTER-CARR # 91770A197	
3	6	PB0039.par	SCREW - SS, 8-32 x 1/2"L, TRUSS PHILLIPS	McMASTER-CARR # 91770A194	
4*	13	PB0338.par	#8-32 INSERT SPIN TITE	Stainless steel	A
5	2	PM0820.par			A
6	1	S7785.asm	LEFT HAND SASH COVER		A
7	1	S7791-A.asm	RIGHT HAND SASH SINK COVER		A
8	1	S7797-072-A.psm	3/8" PLEXIGLASS COVER FOR 72" UNITS	RM0689, SHT, POLYCARBONATE, 3/8" X 48" X 96", CLEAR	A
9*	2	S7798-A.psm		SHT, SS, 16 GA, 304	A
10	1	S7799-072-A.psm	72" Shelve Stiffener	SHT, SS, 16 GA, 304	A
11	1	S7800-072-A.psm	MB, SASH SHELF 72"	16 GA. TYPE T304 SS	A

THIS DOCUMENT CONTAINS PROPRIETARY INFORMATION OF MOPEC, AND MAY NOT BE COPIED IN WHOLE OR PART, AND NO USE SHALL BE MADE OF IT OTHER THAN FOR WHICH IT HAS BEEN SUBMITTED WITHOUT THE WRITTEN PERMISSION OF A MOPEC. MANAGER

MOPEC 2024

UNLESS OTHERWISE SPECIFIED:
ALL DIMENSIONS IN INCHES

TOLERANCES	0.0	± 0.1 in
	0.00	± 0.05 in
	0.000	± 0.010 in
	0.0000	± 0.0010 in
ANGLES		±0.5°

BREAK ALL CORNERS 0.063 X 45°
ALL FILLET RADII R0.063 /0.125in
INSPECT OVAL DIMENSIONS

DRAWN TO 3RD ANGLE PROJECTION

DRAWN BY: A. SALAME
DATE: 7/10/2024

CHECKED BY: ---
DATE: 7/10/2024

APPROVED BY: M. McCLAIN
DATE: 7/10/2024

PART NUMBER: AXI24R-072-B

DESCRIPTION:

SIZE: A2	FILE NAME: AXI24R-072-B.dft	REV: B
SCALE: 1:4	DO NOT SCALE IF IN DOUBT ASK	SHEET 2 OF 2

AXI24R-072-B.dft