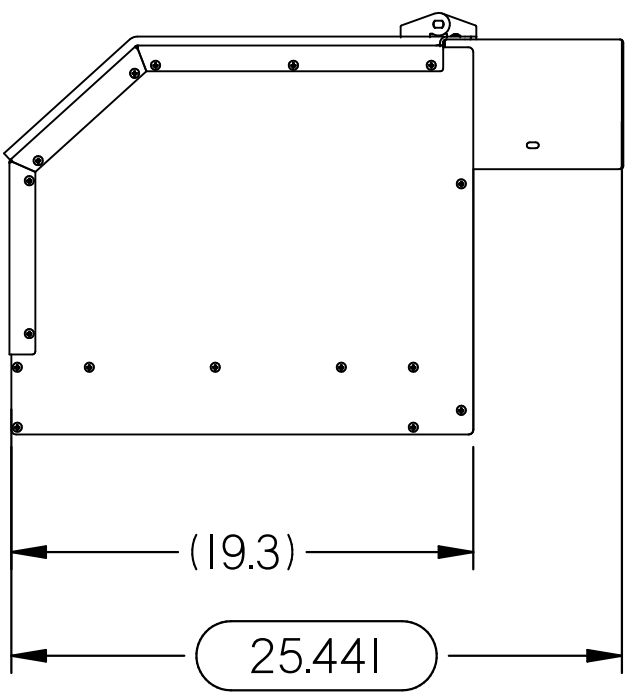
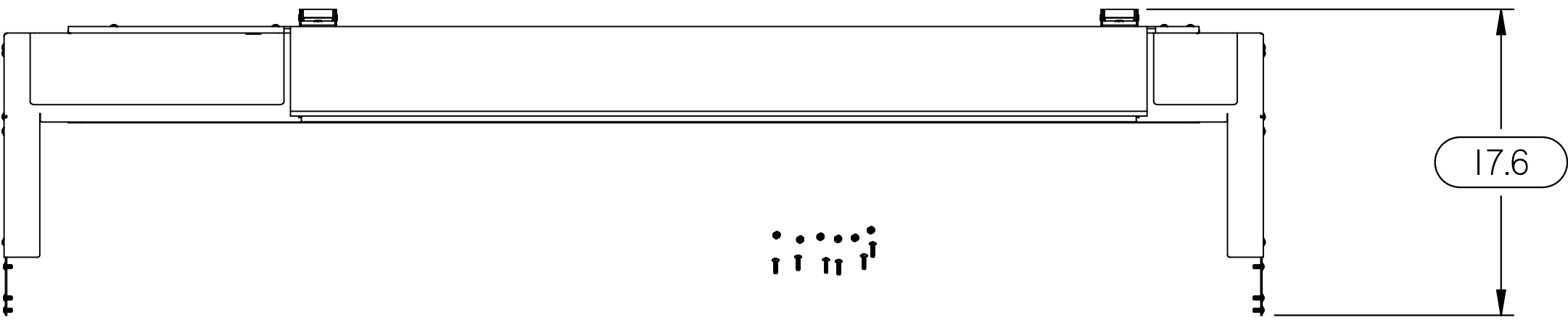
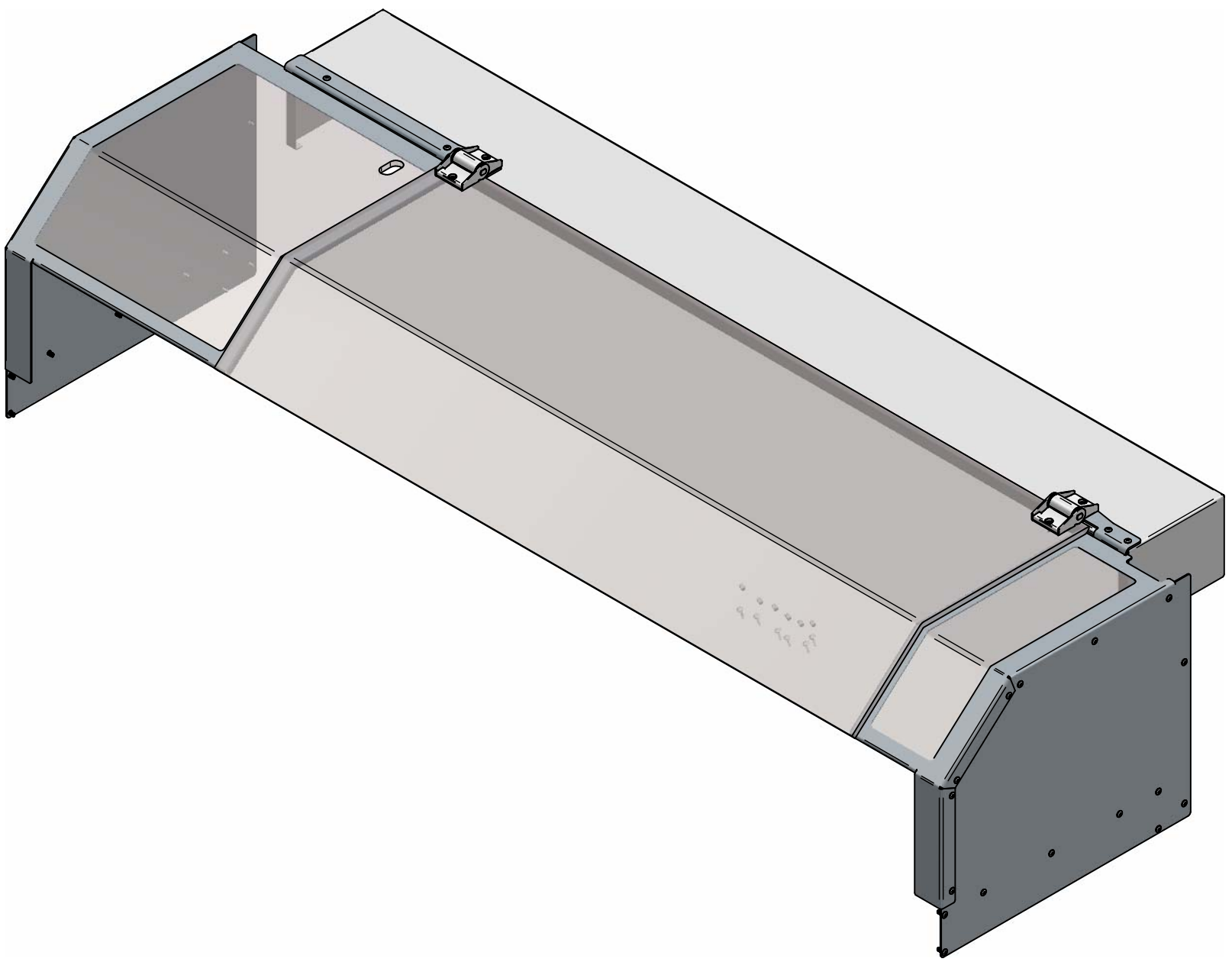
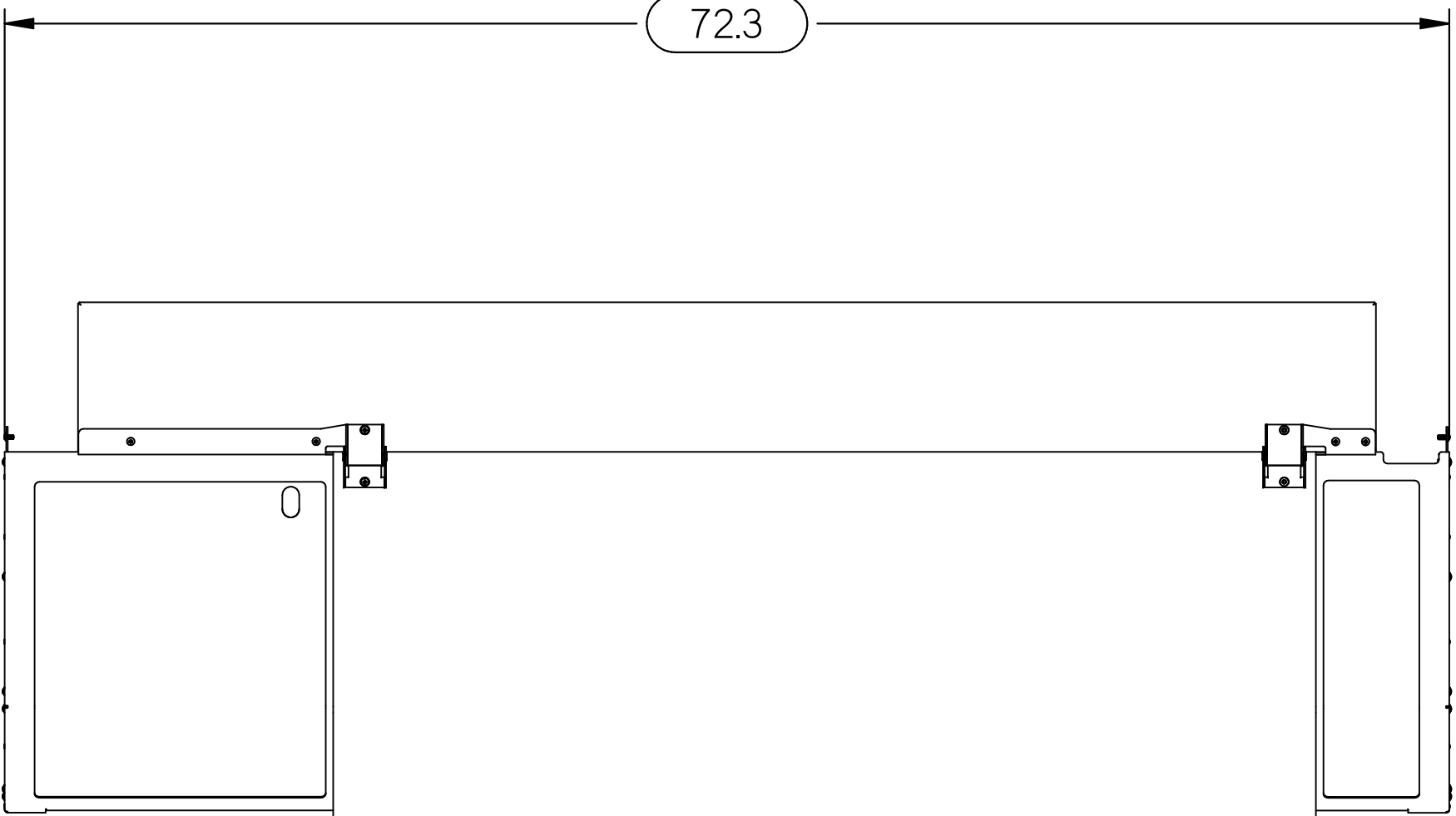





A
B
C
D
E
F
G
H

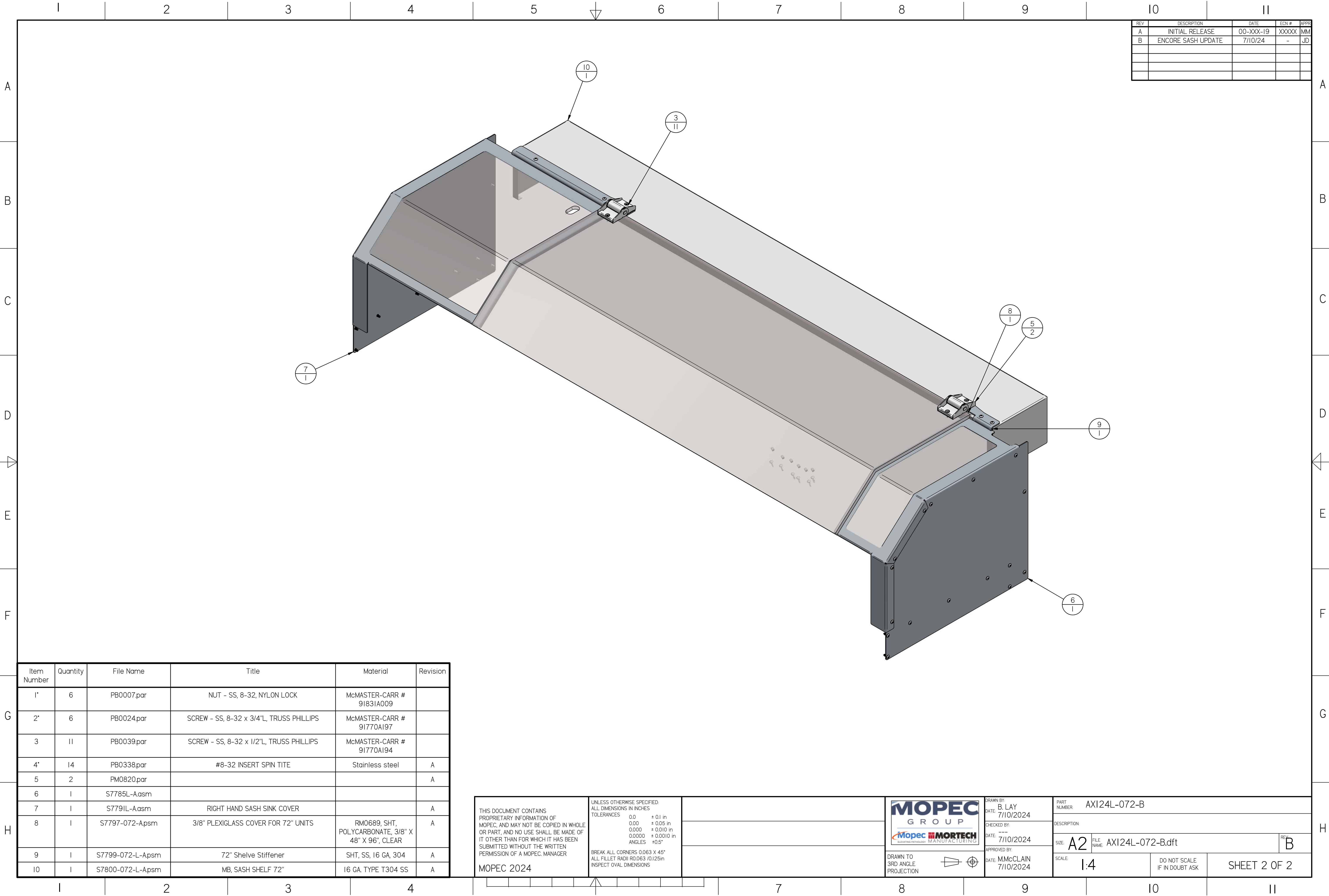
A
B
C
D
E
F
G
H

REV	DESCRIPTION	DATE	ECN #	APPR
A	INITIAL RELEASE	00-XXX-19	XXXXX	MM
B	ENCORE SASH UPDATE	7/10/24	-	JD



THIS DOCUMENT CONTAINS PROPRIETARY INFORMATION OF MOPEC, AND MAY NOT BE COPIED IN WHOLE OR PART, AND NO USE SHALL BE MADE OF IT OTHER THAN FOR WHICH IT HAS BEEN SUBMITTED WITHOUT THE WRITTEN PERMISSION OF A MOPEC MANAGER MOPEC 2024	UNLESS OTHERWISE SPECIFIED: ALL DIMENSIONS IN INCHES TOLERANCES 0.0 ± 0.1 in 0.00 ± 0.05 in 0.000 ± 0.010 in 0.0000 ± 0.0010 in ANGLES ±0.5° BREAK ALL CORNERS 0.063 x 45° ALL FILLET RADII R0.063 /0.125in INSPECT OVAL DIMENSIONS	  <small>ENGINEERING TECHNOLOGY MANUFACTURING</small>		DRAWN BY: B. LAY DATE: 7/10/2024	PART NUMBER: AXI24L-072-B		
				CHECKED BY: DATE: 7/10/2024	DESCRIPTION:		SIZE: A2 FILE NAME: AXI24L-072-B.dft REV: B
		DRAWN TO 3RD ANGLE PROJECTION		APPROVED BY: DATE: M. McCLAIN 7/10/2024	SCALE: 1:8		

AX124L-072-B.dft



REV	DESCRIPTION	DATE	ECN #	APPR
A	INITIAL RELEASE	00-XXX-19	XXXXX	MM
B	ENCORE SASH UPDATE	7/10/24	-	JD

Item Number	Quantity	File Name	Title	Material	Revision
1*	6	PB0007.par	NUT - SS, 8-32, NYLON LOCK	McMASTER-CARR # 91831A009	
2*	6	PB0024.par	SCREW - SS, 8-32 x 3/4"L, TRUSS PHILLIPS	McMASTER-CARR # 91770A197	
3	11	PB0039.par	SCREW - SS, 8-32 x 1/2"L, TRUSS PHILLIPS	McMASTER-CARR # 91770A194	
4*	14	PB0338.par	#8-32 INSERT SPIN TITE	Stainless steel	A
5	2	PM0820.par			A
6	1	S7785L-Aasm			
7	1	S7791L-Aasm	RIGHT HAND SASH SINK COVER		A
8	1	S7797-072-Apsm	3/8" PLEXIGLASS COVER FOR 72" UNITS	RM0689, SHT, POLYCARBONATE, 3/8" X 48" X 96", CLEAR	A
9	1	S7799-072-L-Apsm	72" Shelve Stiffener	SHT, SS, 16 GA, 304	A
10	1	S7800-072-L-Apsm	MB, SASH SHELF 72"	16 GA, TYPE T304 SS	A

THIS DOCUMENT CONTAINS PROPRIETARY INFORMATION OF MOPEC, AND MAY NOT BE COPIED IN WHOLE OR PART, AND NO USE SHALL BE MADE OF IT OTHER THAN FOR WHICH IT HAS BEEN SUBMITTED WITHOUT THE WRITTEN PERMISSION OF A MOPEC. MANAGER

MOPEC 2024

UNLESS OTHERWISE SPECIFIED:
ALL DIMENSIONS IN INCHES

TOLERANCES

0.0	± 0.1 in
0.00	± 0.05 in
0.000	± 0.010 in
0.0000	± 0.0010 in
ANGLES	±0.5°

BREAK ALL CORNERS 0.063 X 45°
ALL FILLET RADII R0.063 /0.125in
INSPECT OVAL DIMENSIONS

DRAWN TO 3RD ANGLE PROJECTION

MOPEC GROUP

MOPEC **MORTECH**

ADVANCED TECHNOLOGY MANUFACTURING

DRAWN BY: B. LAY
DATE: 7/10/2024

CHECKED BY:
DATE: 7/10/2024

APPROVED BY:
DATE: M.McCLAIN 7/10/2024

PART NUMBER: AXI24L-072-B

DESCRIPTION:

SIZE: A2	FILE NAME: AXI24L-072-B.dft	REV: B
----------	-----------------------------	--------

SCALE: 1:4

DO NOT SCALE IF IN DOUBT ASK

SHEET 2 OF 2

AX124L-072-B.dft