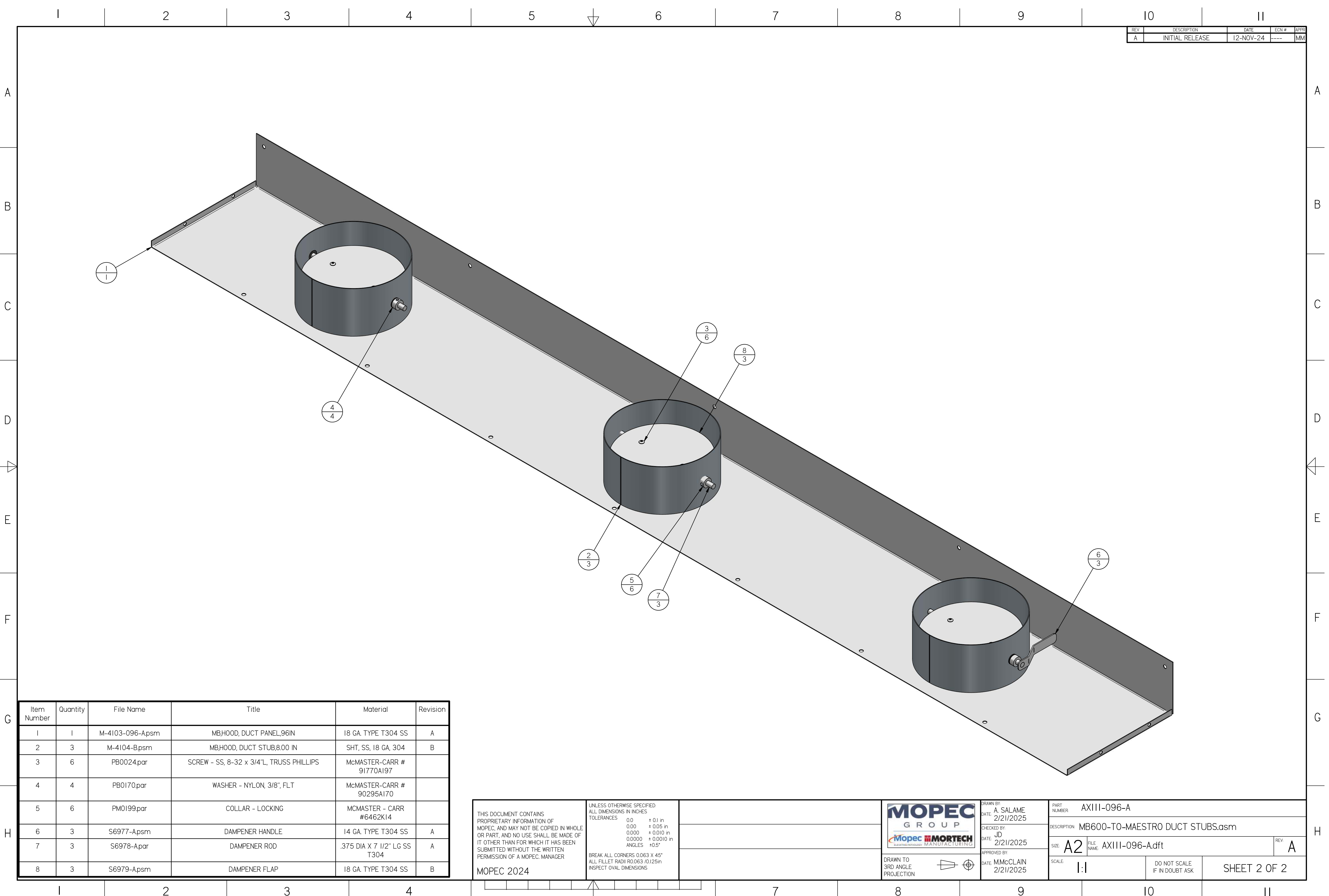


AX111-096-A.dft



REV	DESCRIPTION	DATE	ECN #	APPR
A	INITIAL RELEASE	12-NOV-24	----	MM

Item Number	Quantity	File Name	Title	Material	Revision
1	1	M-4103-096-Apsm	MBHOOD, DUCT PANEL,96IN	18 GA. TYPE T304 SS	A
2	3	M-4104-Bpsm	MBHOOD, DUCT STUB,8.00 IN	SHT, SS, 18 GA, 304	B
3	6	PB0024.par	SCREW - SS, 8-32 x 3/4"L, TRUSS PHILLIPS	McMASTER-CARR # 91770A197	
4	4	PB0170.par	WASHER - NYLON, 3/8",FLT	McMASTER-CARR # 90295A170	
5	6	PM0199.par	COLLAR - LOCKING	McMASTER - CARR #6462K14	
6	3	S6977-Apsm	DAMPENER HANDLE	14 GA. TYPE T304 SS	A
7	3	S6978-A.par	DAMPENER ROD	.375 DIA X 7 1/2" LG SS T304	A
8	3	S6979-Apsm	DAMPENER FLAP	18 GA. TYPE T304 SS	B

THIS DOCUMENT CONTAINS PROPRIETARY INFORMATION OF MOPEC, AND MAY NOT BE COPIED IN WHOLE OR PART, AND NO USE SHALL BE MADE OF IT OTHER THAN FOR WHICH IT HAS BEEN SUBMITTED WITHOUT THE WRITTEN PERMISSION OF A MOPEC MANAGER

MOPEC 2024

UNLESS OTHERWISE SPECIFIED:
ALL DIMENSIONS IN INCHES

TOLERANCES	0.0	± 0.1 in
	0.00	± 0.05 in
	0.000	± 0.010 in
	0.0000	± 0.0010 in
ANGLES		±0.5°

BREAK ALL CORNERS 0.063 X 45°
ALL FILLET RADII R0.063 /0.125in
INSPECT OVAL DIMENSIONS

DRAWN TO 3RD ANGLE PROJECTION

DRAWN BY: A SALAME
DATE: 2/21/2025

CHECKED BY: JD
DATE: 2/21/2025

APPROVED BY: M.McCLAIN
DATE: 2/21/2025

PART NUMBER: AX111-096-A	REV: A
DESCRIPTION: MB600-T0-MAESTRO DUCT STUBS.asm	
SIZE: A2	FILE NAME: AX111-096-A.dft
SCALE: 1:1	DO NOT SCALE IF IN DOUBT ASK
SHEET 2 OF 2	

AX111-096-A.dft