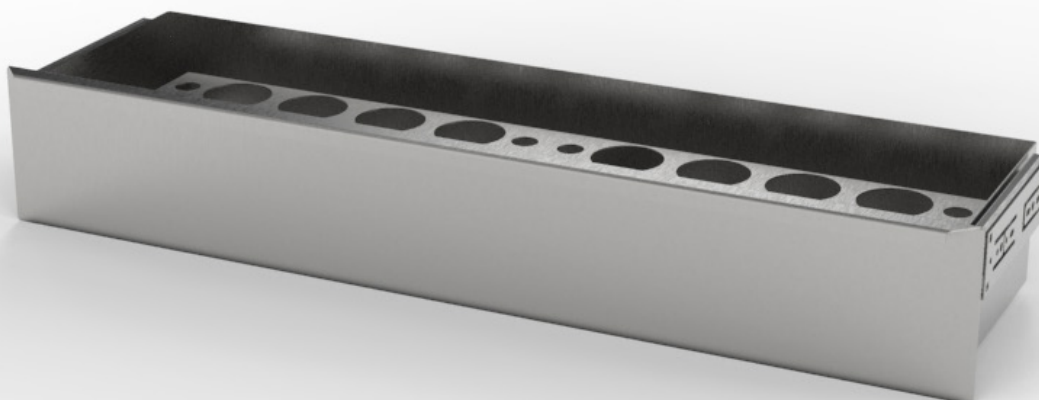


Ensemble Large Drawer with Dye Holders



SPECIFICATIONS

Construction

- Provides storage for instruments, supplies, and other consumable items to keep your workspace clutter-free
- Includes (2) AX004 Marking Dye Holders to hold up to 18 large dye bottles less than 2" in diameter

Materials

- 304 stainless steel construction with a polished No. 4 finish

Dimensions

- Overall: 28.3" L x 8.1" D x 4.7" H
- Usable area: 26.9" W 7.3" D x 4" H

Capacity

- 20 lbs

Compatibility

- 48" units: can fit 1 large drawer
- 60" units: can fit 1 large drawer
- 72" units: can fit 1 large drawer
- 96" units: can fit 2 large drawers

NOTE:

- We recommend ordering at the time of purchase to be properly installed during manufacturing of the grossing station.

| Unit Size | Small Drawers Capability | Large Drawers Capability |
|-----------|-------------------------------------|-------------------------------------|
| 48" | 1 total (AX096 or AX097) | 1 total (AX098 or AX099) |
| 60" | 2 total (AX096 and/or AX097) | 1 total (AX098 or AX099) |
| 72" | 2 total (AX096 and/or AX097) | 1 total (AX098 or AX099) |
| 96" | 2 total (AX096 and/or AX097) | 2 total (AX098 and/or AX099) |

MOPEC
GROUP

mopec
ELEVATING PATHOLOGY

MORTECH
MANUFACTURING

www.mopecgroup.com

800.362.8491

800 Tech Row, Madison Heights, MI