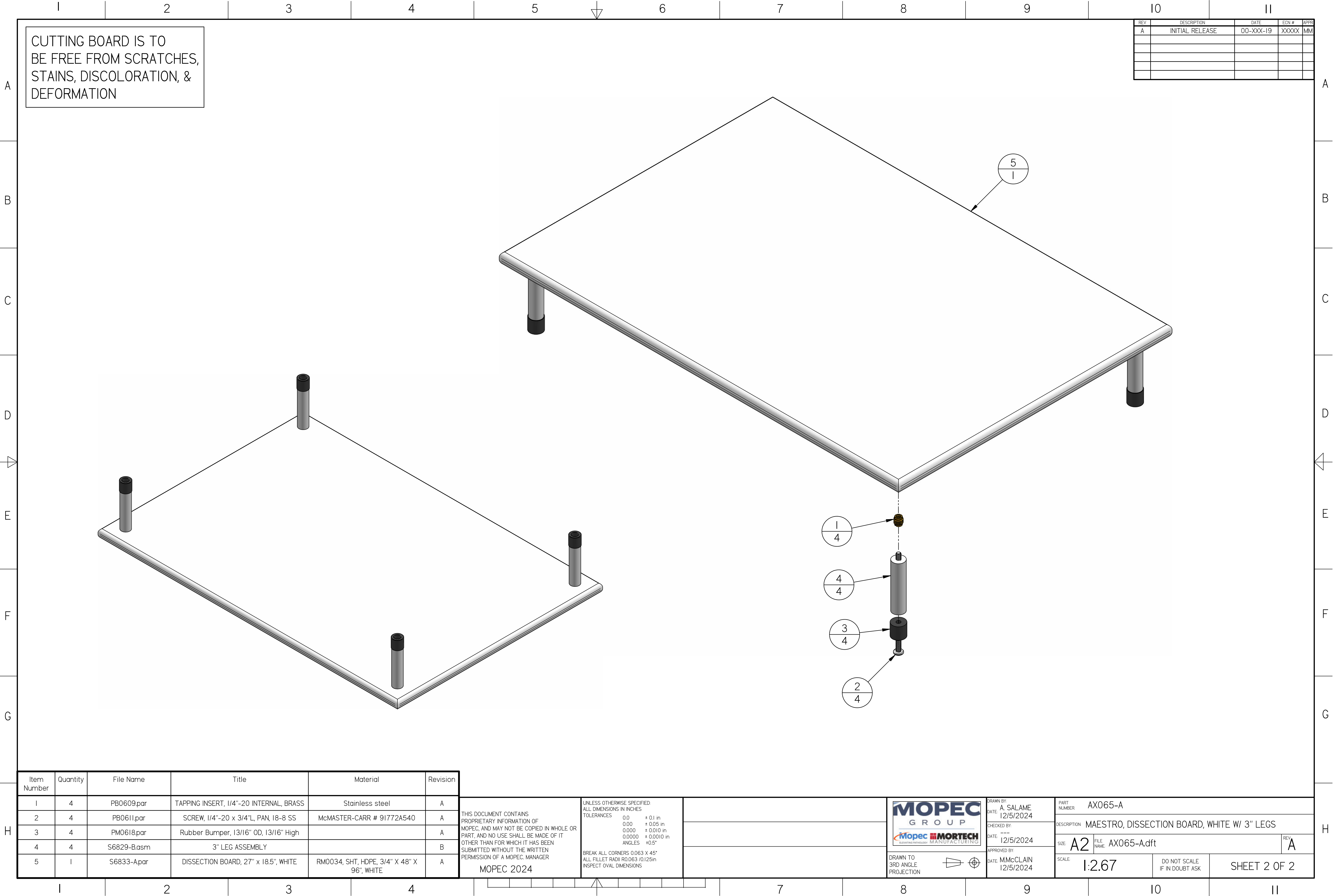


AX065-A.dft



REV	DESCRIPTION	DATE	ECN #	APPR
A	INITIAL RELEASE	00-XXX-19	XXXXX	MM

Item Number	Quantity	File Name	Title	Material	Revision
1	4	PB0609.par	TAPPING INSERT, 1/4"-20 INTERNAL, BRASS	Stainless steel	A
2	4	PB0611.par	SCREW, 1/4"-20 x 3/4"L, PAN, 18-8 SS	McMASTER-CARR # 91772A540	A
3	4	PM0618.par	Rubber Bumper, 13/16" OD, 13/16" High		A
4	4	S6829-B.asm	3" LEG ASSEMBLY		B
5	1	S6833-A.par	DISSECTION BOARD, 27" x 18.5", WHITE	RM0034, SHT, HDPE, 3/4" X 48" X 96", WHITE	A

THIS DOCUMENT CONTAINS PROPRIETARY INFORMATION OF MOPEC, AND MAY NOT BE COPIED IN WHOLE OR PART, AND NO USE SHALL BE MADE OF IT OTHER THAN FOR WHICH IT HAS BEEN SUBMITTED WITHOUT THE WRITTEN PERMISSION OF A MOPEC MANAGER



MOPEC 2024

UNLESS OTHERWISE SPECIFIED:
ALL DIMENSIONS IN INCHES

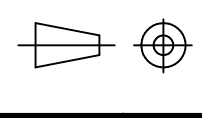
TOLERANCES

0.0	± 0.1 in
0.00	± 0.05 in
0.000	± 0.010 in
0.0000	± 0.0010 in
ANGLES	± 0.5°

BREAK ALL CORNERS 0.063 X 45°
ALL FILLET RADII R0.063 / 0.125 in
INSPECT OVAL DIMENSIONS



DRAWN TO 3RD ANGLE PROJECTION



DRAWN BY: A SALAME
DATE: 12/5/2024
CHECKED BY:
DATE: 12/5/2024
APPROVED BY:
DATE: M.McCLAIN 12/5/2024

PART NUMBER: AX065-A	DESCRIPTION: MAESTRO, DISSECTION BOARD, WHITE W/ 3" LEGS	REV: A
SIZE: A2	FILE NAME: AX065-A.dft	
SCALE: 1:2.67	DO NOT SCALE IF IN DOUBT ASK	SHEET 2 OF 2