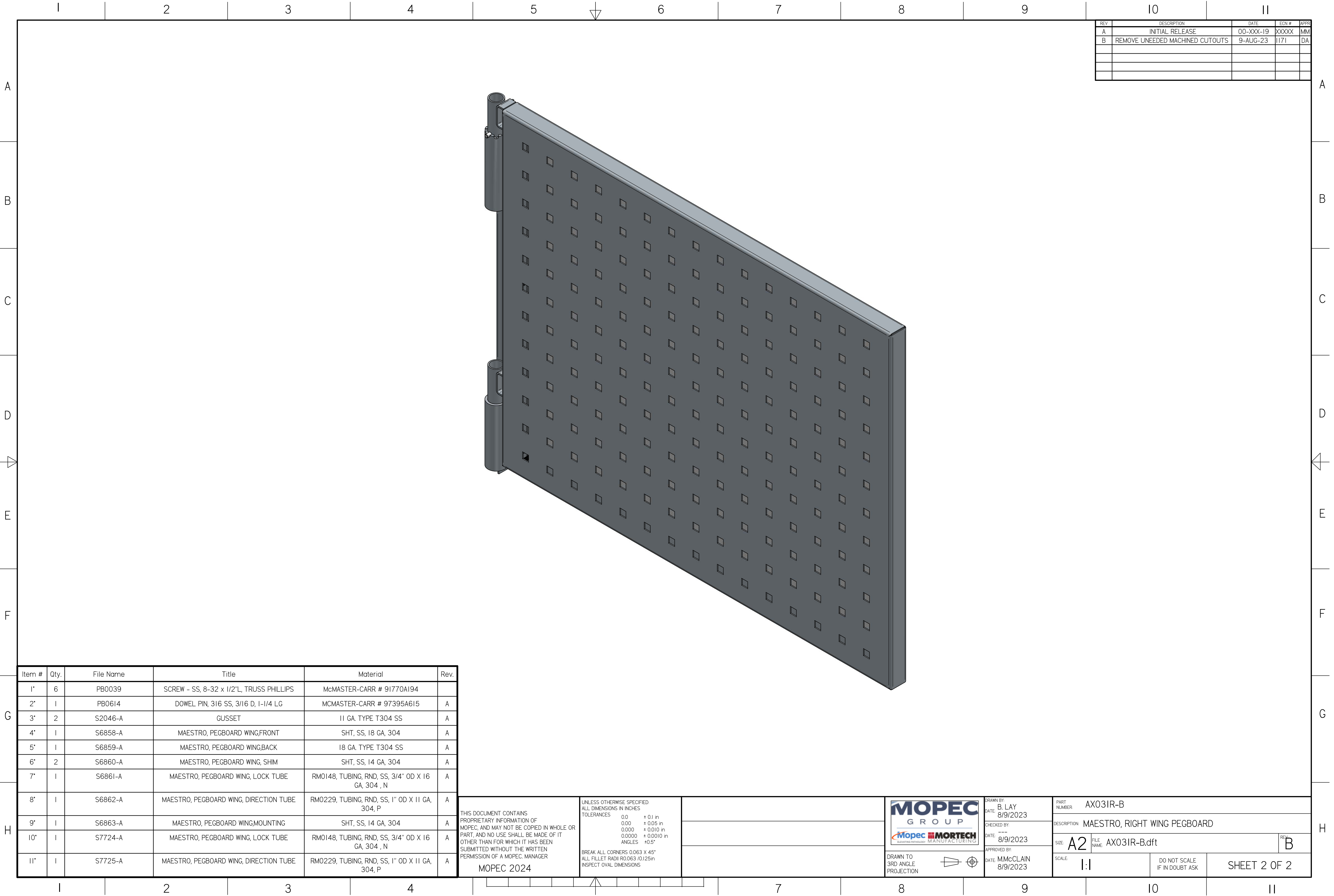


AX031R-B.dft



REV	DESCRIPTION	DATE	ECN #	APPR
A	INITIAL RELEASE	00-XXX-19	XXXXX	MM
B	REMOVE UNEEDED MACHINED CUTOUTS	9-AUG-23	1171	DA

Item #	Qty.	File Name	Title	Material	Rev.
1'	6	PB0039	SCREW - SS, 8-32 x 1/2"L, TRUSS PHILLIPS	McMASTER-CARR # 91770A194	
2'	1	PB0614	DOWEL PIN, 316 SS, 3/16 D, 1-1/4 LG	McMASTER-CARR # 97395A615	A
3'	2	S2046-A	GUSSET	11 GA. TYPE T304 SS	A
4'	1	S6858-A	MAESTRO, PEGBOARD WING,FRONT	SHT, SS, 18 GA, 304	A
5'	1	S6859-A	MAESTRO, PEGBOARD WING,BACK	18 GA. TYPE T304 SS	A
6'	2	S6860-A	MAESTRO, PEGBOARD WING, SHIM	SHT, SS, 14 GA, 304	A
7'	1	S6861-A	MAESTRO, PEGBOARD WING, LOCK TUBE	RM0148, TUBING, RND, SS, 3/4" OD X 16 GA, 304 , N	A
8'	1	S6862-A	MAESTRO, PEGBOARD WING, DIRECTION TUBE	RM0229, TUBING, RND, SS, 1" OD X 11 GA, 304, P	A
9'	1	S6863-A	MAESTRO, PEGBOARD WING,MOUNTING	SHT, SS, 14 GA, 304	A
10'	1	S7724-A	MAESTRO, PEGBOARD WING, LOCK TUBE	RM0148, TUBING, RND, SS, 3/4" OD X 16 GA, 304 , N	A
11'	1	S7725-A	MAESTRO, PEGBOARD WING, DIRECTION TUBE	RM0229, TUBING, RND, SS, 1" OD X 11 GA, 304, P	A

THIS DOCUMENT CONTAINS
PROPRIETARY INFORMATION OF
MOPEC, AND MAY NOT BE COPIED IN WHOLE OR
PART, AND NO USE SHALL BE MADE OF IT
OTHER THAN FOR WHICH IT HAS BEEN
SUBMITTED WITHOUT THE WRITTEN
PERMISSION OF A MOPEC MANAGER

MOPEC 2024

UNLESS OTHERWISE SPECIFIED:
ALL DIMENSIONS IN INCHES
TOLERANCES
0.0 ± 0.1 in
0.00 ± 0.05 in
0.000 ± 0.010 in
0.0000 ± 0.0010 in
ANGLES ±0.5°
BREAK ALL CORNERS 0.063 X 45°
ALL FILLET RADII R0.063 /0.125in
INSPECT OVAL DIMENSIONS

MOPEC
GROUP

Mopec **MORTECH**
SUSTAINABLE TECHNOLOGY MANUFACTURING

DRAWN TO
3RD ANGLE
PROJECTION

DRAWN BY:
B. LAY
DATE: 8/9/2023
CHECKED BY:
DATE: 8/9/2023
APPROVED BY:
DATE: M.McCLAIN
8/9/2023

PART
NUMBER: AX031R-B

DESCRIPTION: MAESTRO, RIGHT WING PEGBOARD

SIZE: A2

FILE
NAME: AX031R-B.dft

REV: B

SCALE: 1:1

DO NOT SCALE
IF IN DOUBT ASK

SHEET 2 OF 2