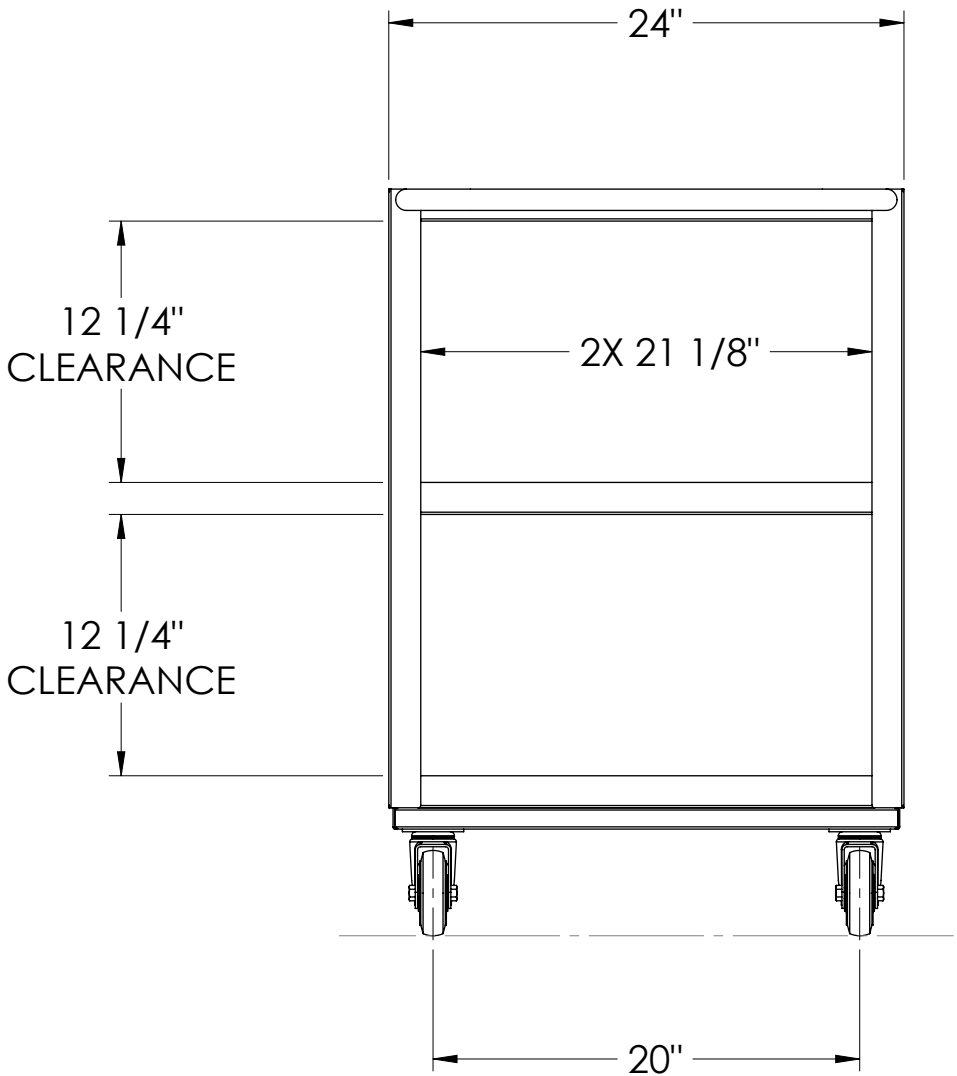
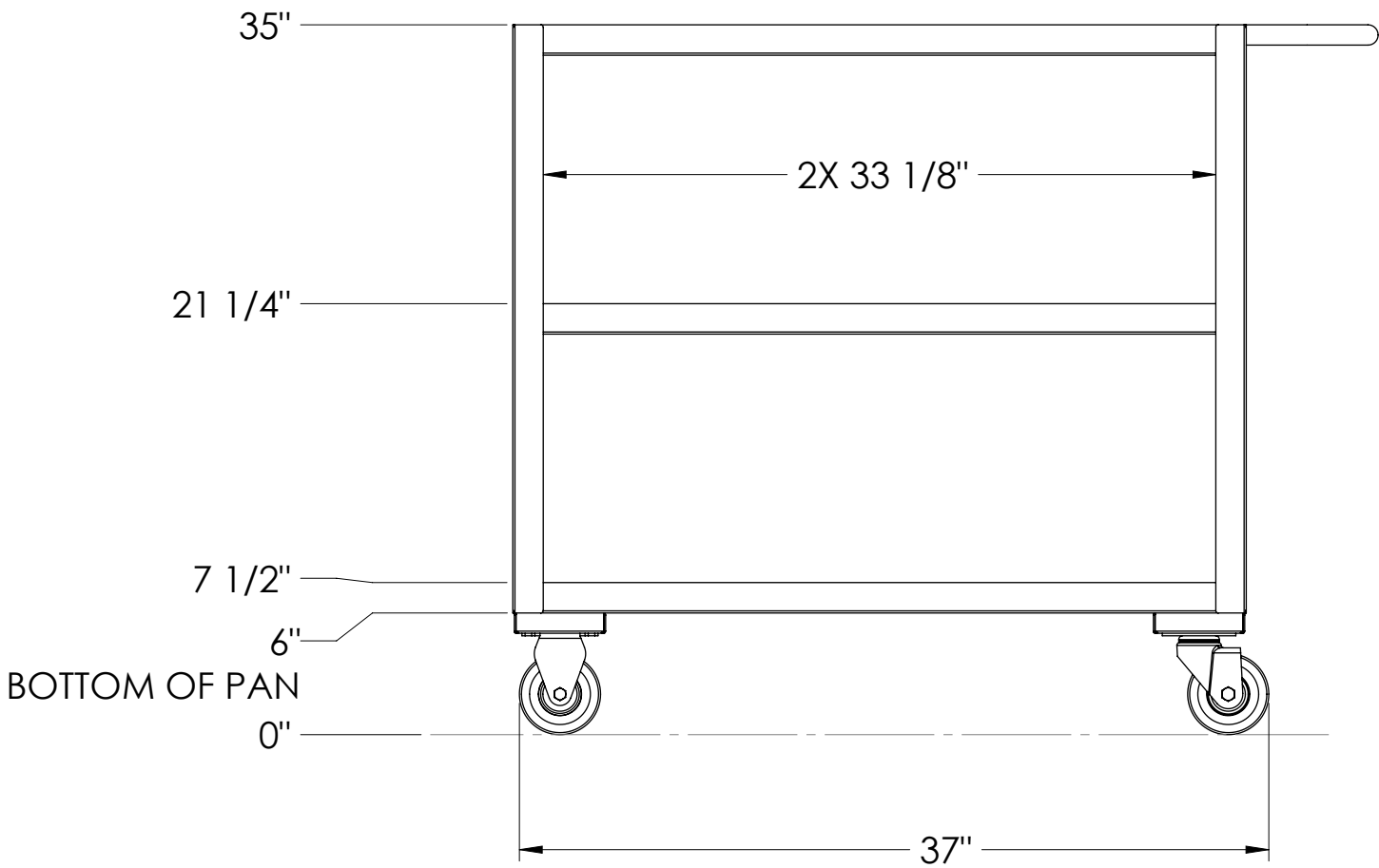
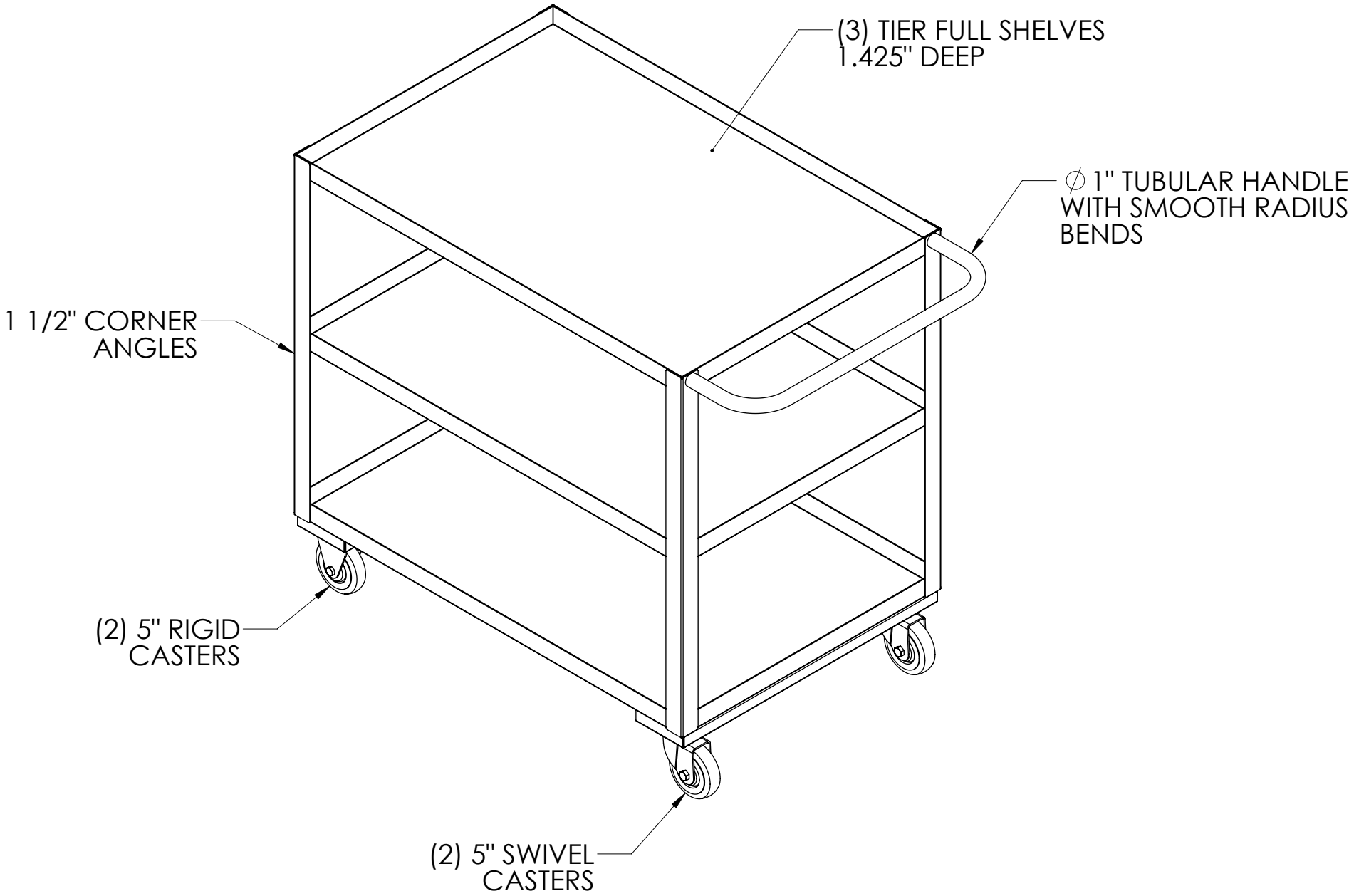
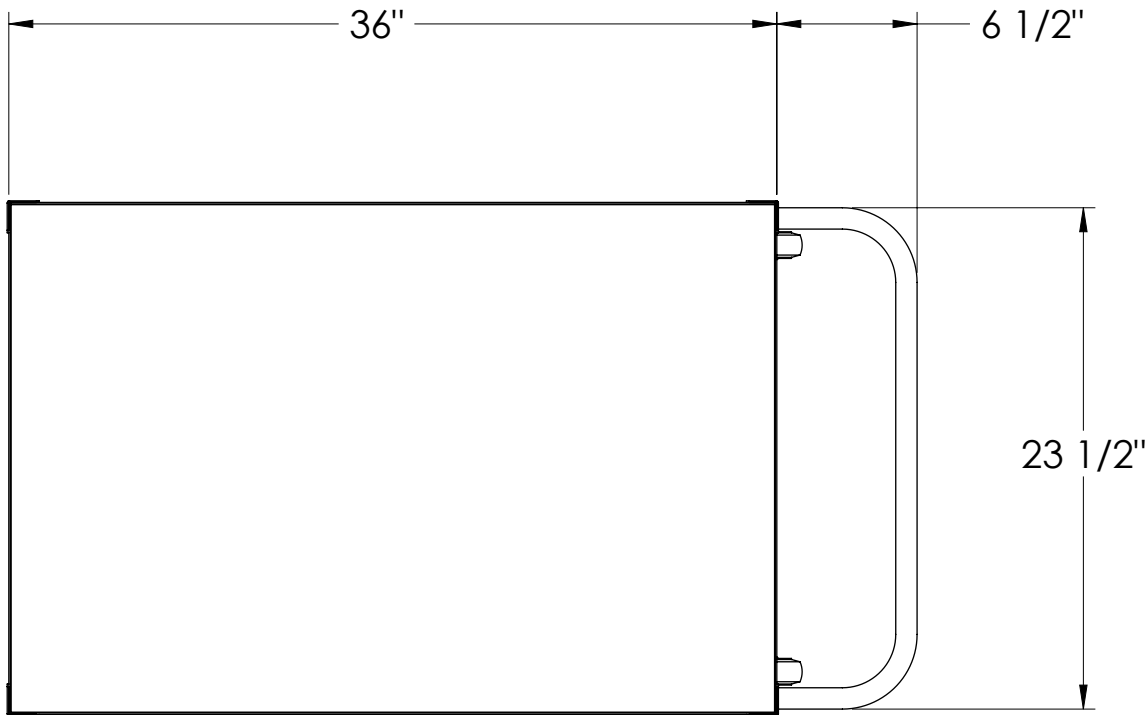





NOTES: UNLESS OTHERWISE SPECIFIED

1. APPLICABLE STANDARDS AND SPECIFICATIONS;  
ANSI Y14.5M, DIMENSIONS AND TOLERANCES  
ANSI Y1.1, ABBREVIATIONS
2. WEIGHT CAPACITY: 400 LBS.



CUSTOMER		APPROVAL		TOLERANCE BLOCK:		PROPRIETARY		  																	
PROJECT				DIMENSIONS ARE IN INCHES		THIS DOCUMENT AND THE DATE DISCLOSED HEREIN AND HEREWITH IS NOT TO BE REPRODUCED, USED, OR OTHERWISE DISCLOSED IN WHOLE OR IN PART TO ANYONE WITHOUT WRITTEN AUTHORIZATION FROM MORTECH MFG.																			
				DECIMALS X    ± .1	ANGLES        ± 1°																				
				DECIMALS .XX   ± .01	FRACTIONS    ± 1/16"																				
PROJECT  NAME		DECIMALS .XXX   ± .005		DO NOT SCALE DRAWING		APPROVALS		DATE																	
		SIGNATURE				DATE		DRAWN BY		01/21/25															
		MATERIAL				D. FRADEJAS		CHECKED BY																	
				STAINLESS STEEL, 16 GA.						TITLE		MODEL - MXA236-S5													
				FINISH		#4 POLISHED SHELVES		APPROVED BY				SIZE		DWG NO.		REV									
												C		MXA236-S5-AP		X01									
												SCALE		1:8		NEXT ASSY.		SHEET		1		OF		1	