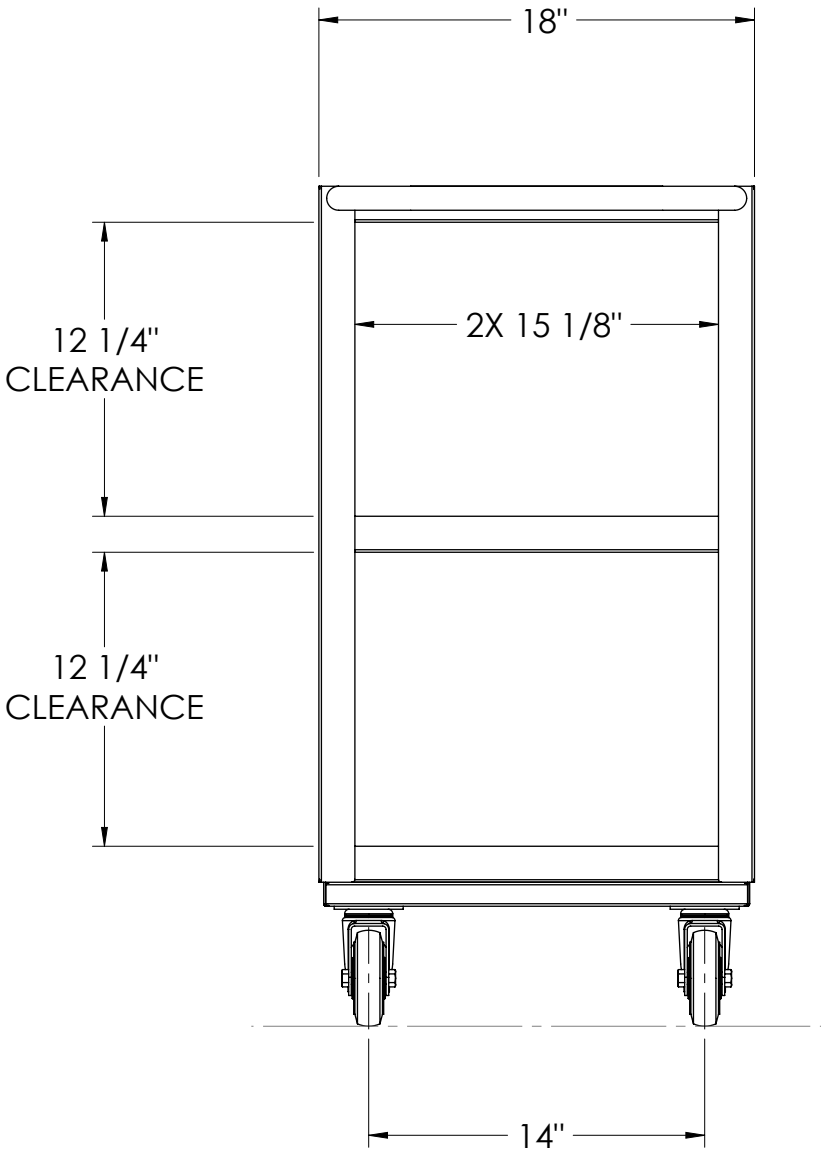
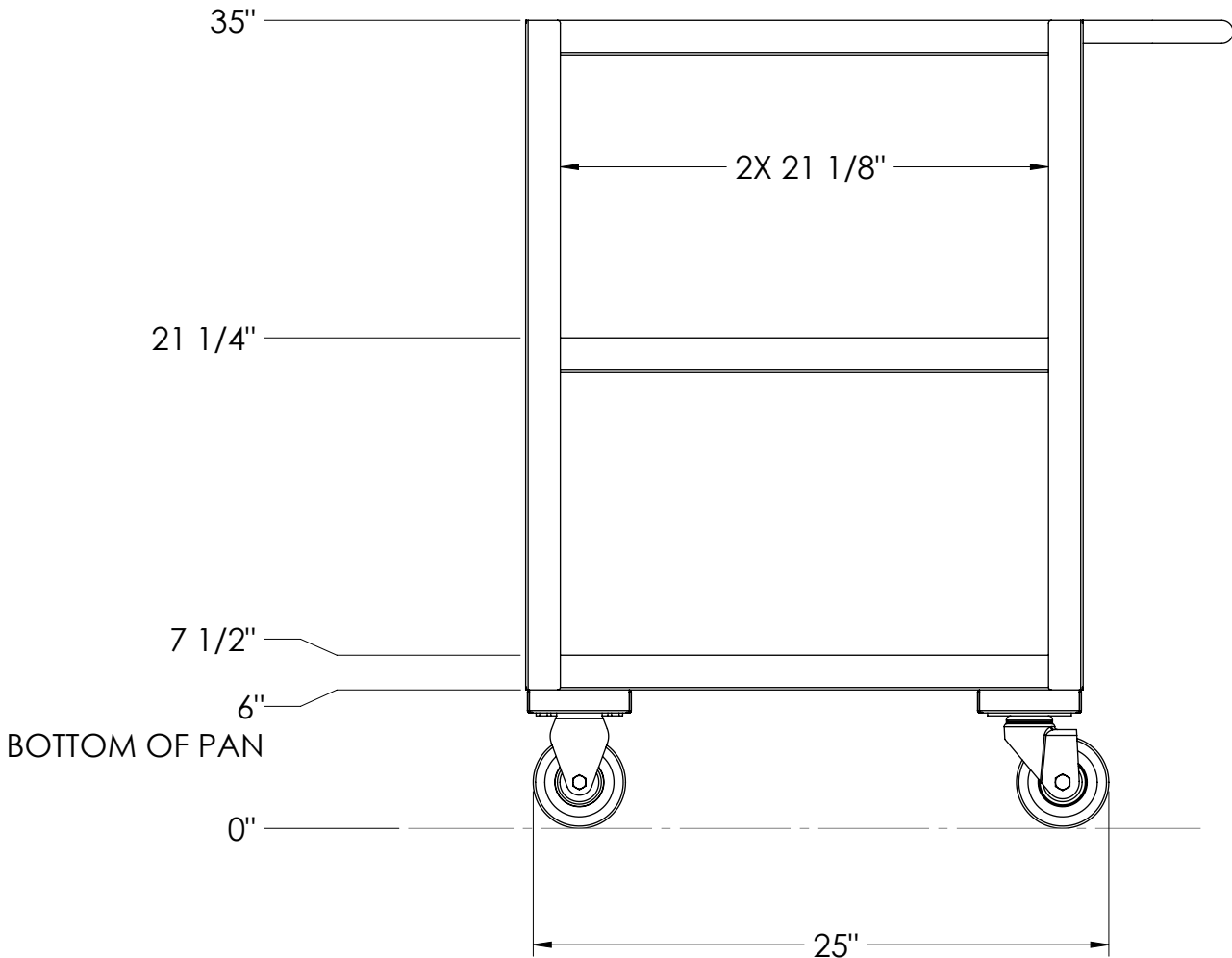
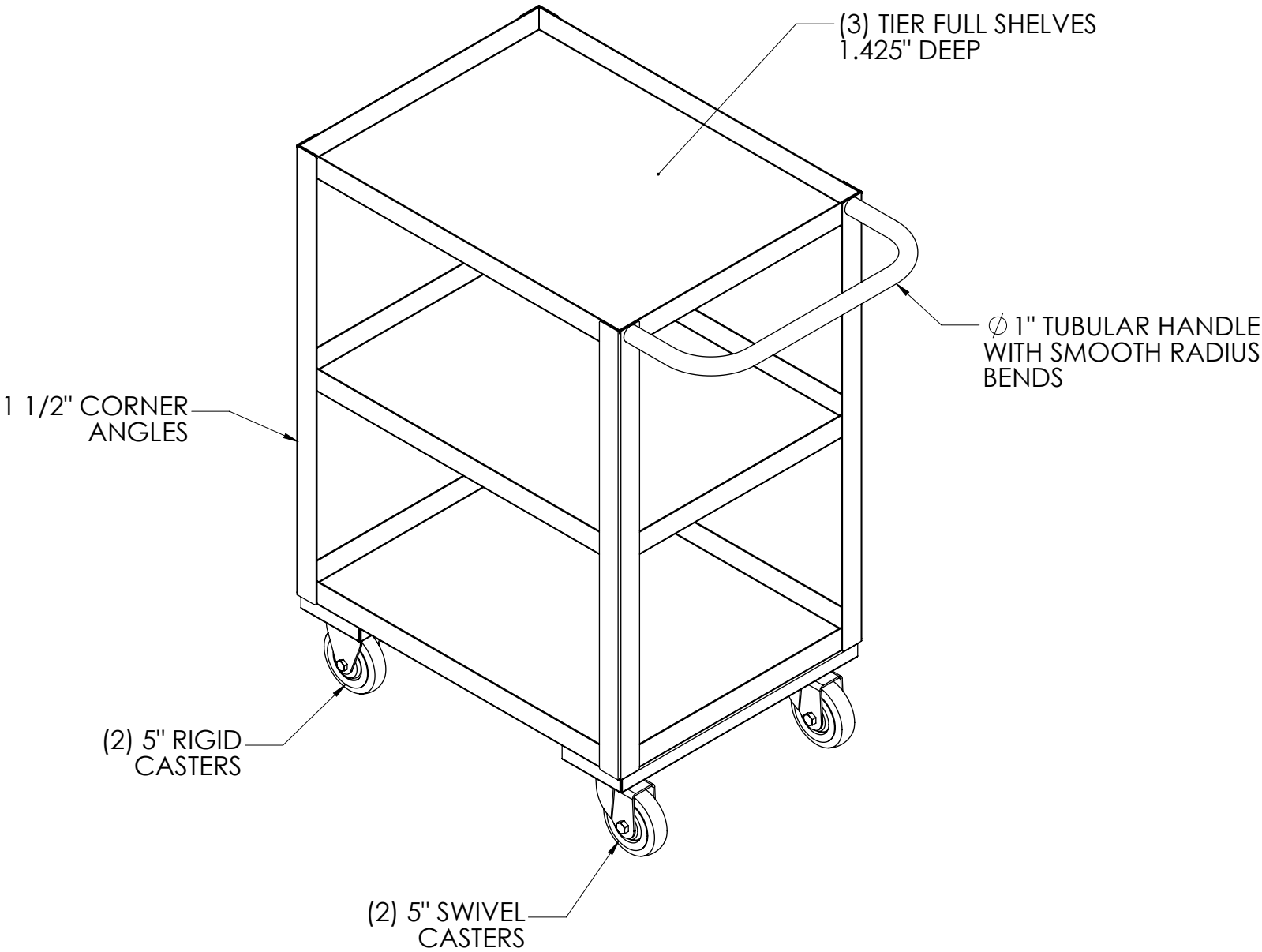
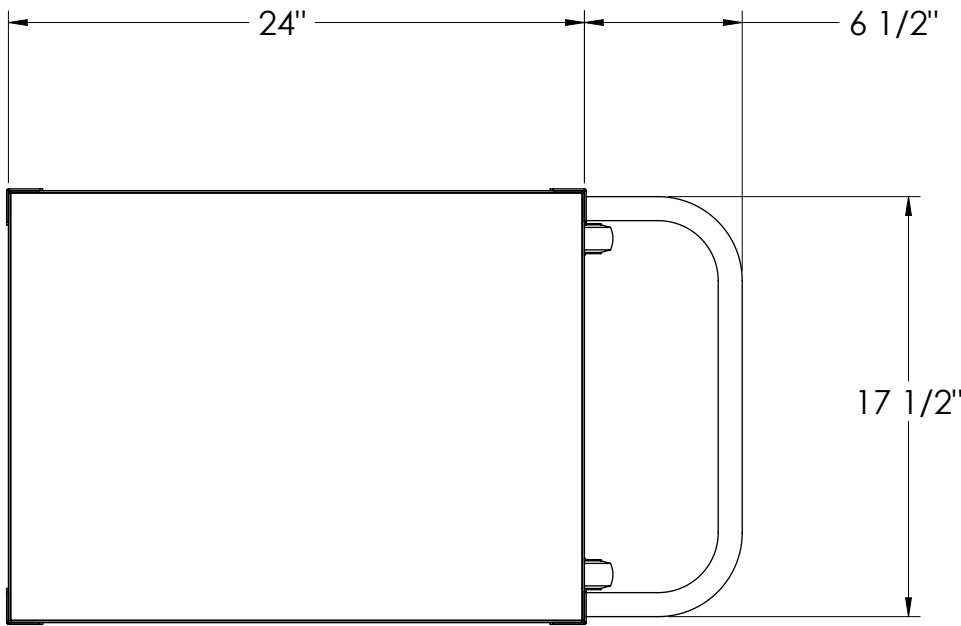


NOTES: UNLESS OTHERWISE SPECIFIED

1. APPLICABLE STANDARDS AND SPECIFICATIONS;
ANSI Y14.5M, DIMENSIONS AND TOLERANCES
ANSI Y1.1, ABBREVIATIONS
2. WEIGHT CAPACITY: 300 LBS.



CUSTOMER CUSTOMER NAME		APPROVAL		TOLERANCE BLOCK: DIMENSIONS ARE IN INCHES		PROPRIETARY THIS DOCUMENT AND THE DATE DISCLOSED HEREIN AND HERewith IS NOT TO BE REPRODUCED, USED, OR OTHERWISE DISCLOSED IN WHOLE OR IN PART TO ANYONE WITHOUT WRITTEN AUTHORIZATION FROM MORTECH MFG.		MOPEC GROUP		mopec		MORTECH ELEVATING PATHOLOGY MANUFACTURING	
PROJECT PROJECT NAME		SIGNATURE		DATE		DO NOT SCALE DRAWING		APPROVALS		DATE		TITLE MODEL - MXA124-S5	
						MATERIAL STAINLESS STEEL, 16 GA.		DRAWN BY D. FRADEJAS		01/21/25		STAINLESS STEEL UTILITY CART- 24"L X 18"W	
						FINISH #4 POLISHED SHELVES		CHECKED BY				SIZE C	
								APPROVED BY				DWG NO. MXA124-S5-AP	
												REV X01	
												SCALE 1:8	
												NEXT ASSY.	
												SHEET 1	
												OF 1	