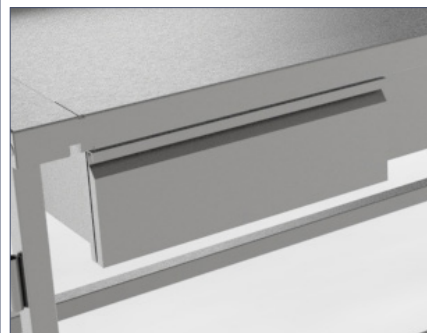


Standard Anatomy Dissection Table with Recessed Top

The Mopec Standard Anatomy Dissection Tables are a durable, versatile solution designed to support the rigorous demands of anatomy labs and educational institutions. Backed by Mopec's expertise, these tables combine reliability, practicality, and safety to enhance dissection processes.



SPECIFICATIONS

Construction

- All stainless-steel construction
- Non-removable top
- Built-in tapered slope
- Includes drain hole with PVC drain valve
- (4) heavy duty 8" casters with (3) total lock and (1) directional lock
- (4) Post sockets included
- HA400 includes three drawers underneath top

Materials

- 304 stainless steel construction with a polished No. 4 finish

Dimensions

- 86" L x 30" W x 36"H
- HA400 drawers: 19.9" L x 16.9" W x 4.4" D

Capacity

- 350 Lbs

Options & Accessories

- AX107: Bucket holder
- HO001: Bridge-style leg holder
- HO002: Bridge-style book holder
- HO005: Post leg-holders
- HO006: Post book holder
- HO024: Full-length shelf
- HO030: Instrument tray holder
- HO032: Short shelf (use with AX107)

Related/Alternate/Obsolete Product Model Numbers

Model No.	Description	Status	Notes
600019	Standard Dissection Table	Replaced	Use HA100

Variations

Model No.	Description	Drawers	Dimensions
HA100	Standard Dissection Table	No	86"L x 30"W x 36"H
HA400	Standard Dissection Table	Yes	86"L x 30"W x 36"H

MOPEC
GROUP

mopec
ELEVATING PATHOLOGY

MORTECH
MANUFACTURING

www.mopecgroup.com

800.362.8491

800 Tech Row, Madison Heights, MI