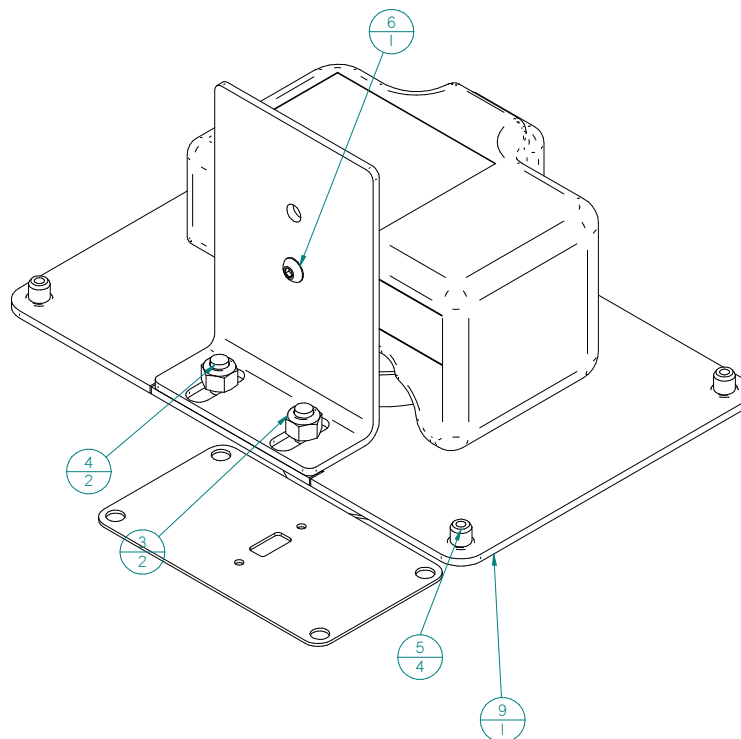


NOTE:
PARTS ARE FOR
KITING PURPOSES ONLY

CAMERA IS REFERENCE ONLY

REV	DESCRIPTION	DATE	BY	APP
A	INITIAL RELEASE	28-JUN-22		JJ

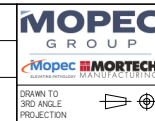


Item #	Qty	File Name	Title	Material	Rev
		AX043-L1.asm	MAESTRO, PATHCAM SYSTEM, ADVANCED		A
1"	1	AXI23.par	Canon Rebel T3i, SLR Camera		
2"	1	M-4311.psm	USB PANEL MOUNT BRACKET	SHT, SS, 18 GA, 304	A
3	2	PB0016.par	NUT - SS, 1/4"-20, NYLON LOCK	McMASTER-CARR # 91831A029	A
4	2	PB0247.par	1/4"-20 x 1/2" STUD SS		A
5	4	PB0338.par	#8-32 INSERT SPIN TITE	MARSHALL SALES # AE-KS-832-80	A
6	1	PB0512.par	SCREW - SS, 10-32 x 3/8", BUTTON HEAD	McMASTER-CARR # 92949A263	A
7"	1	PE0754.par	RECEPTACLE, 15A, 125 VAC, 35MM DIN RAIL MOUNT	AUTOMATION DIRECT: FA-REC2	A
8"	1	S6883-G.psm	CAMERA HOLSTER	SHT, SS 11 GA, 304	G
9	1	S7586-B.psm	MAESTRO, PATHCAM COVER PLATE, FOR AXI23	SHT, SS 11 GA, 304	B

THIS DOCUMENT CONTAINS
PROPRIETARY INFORMATION OF
MOPEC, AND MAY NOT BE COPIED IN WHOLE
OR PART, AND NO USE SHALL BE MADE OF
IT OTHER THAN FOR WHICH IT HAS BEEN
SUBMITTED WITHOUT THE WRITTEN
PERMISSION OF A MOPEC MANAGER

UNLESS OTHERWISE SPECIFIED
ALL DIMENSIONS IN INCHES
TOLERANCES
0.0 ± 0.1 in
0.000 ± 0.005 in
0.0000 ± 0.0010 in
ANGLES
± 0.5°
BREAK ALL CORNERS 0.063 x 45°
ALL FILLET RADI R0.063 (0.025 in)
INSPECT OVAL DIMENSIONS

MATERIAL:



DRAWN BY
JAW: shankins
5/31/2024
CHECKED BY
DATE
5/31/2024
APPROVED BY
DATE MMCLAIN
5/31/2024

PART NUMBER	AX043-L1
DESCRIPTION	MAESTRO, PATHCAM SYSTEM, ADVANCED
SIZE	A2
FILE NAME	AX043-L1.dft
SCALE	1.2:1
DO NOT SCALE IF IN DOUBT ASK	
SHEET 1 OF 2	

* AX043-L1.dft*