

REV	DESCRIPTION	DATE	ECN #	APPR
A	INITIAL RELEASE	10/20/15	864	MM


THIS DOCUMENT CONTAINS PROPRIETARY INFORMATION OF MOPEC, AND MAY NOT BE COPIED IN WHOLE OR PART, AND NO USE SHALL BE MADE OF IT OTHER THAN FOR WHICH IT HAS BEEN SUBMITTED WITHOUT THE WRITTEN PERMISSION OF A MOPEC MANAGER

MOPEC 2024


UNLESS OTHERWISE SPECIFIED:
ALL DIMENSIONS IN INCHES

TOLERANCES	0.0	± 0.1 in
	0.00	± 0.05 in
	0.000	± 0.010 in
	0.0000	± 0.0010 in
ANGLES		± 0.5°

BREAK ALL CORNERS 0.063 X 45°
ALL FILLET RADII R0.063 / 0.125 in
INSPECT OVAL DIMENSIONS

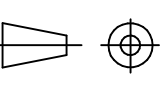


MOPEC GROUP



MORTECH

DRAWN TO 3RD ANGLE PROJECTION



DRAWN BY: B. LAY
DATE: 8/25/2022

CHECKED BY: ---
DATE: 8/25/2022

APPROVED BY: MMcCLAIN
DATE: 8/25/2022

PART NUMBER: H0001-A

DESCRIPTION: BRIDGE STYLE LEG REST

SIZE: A2

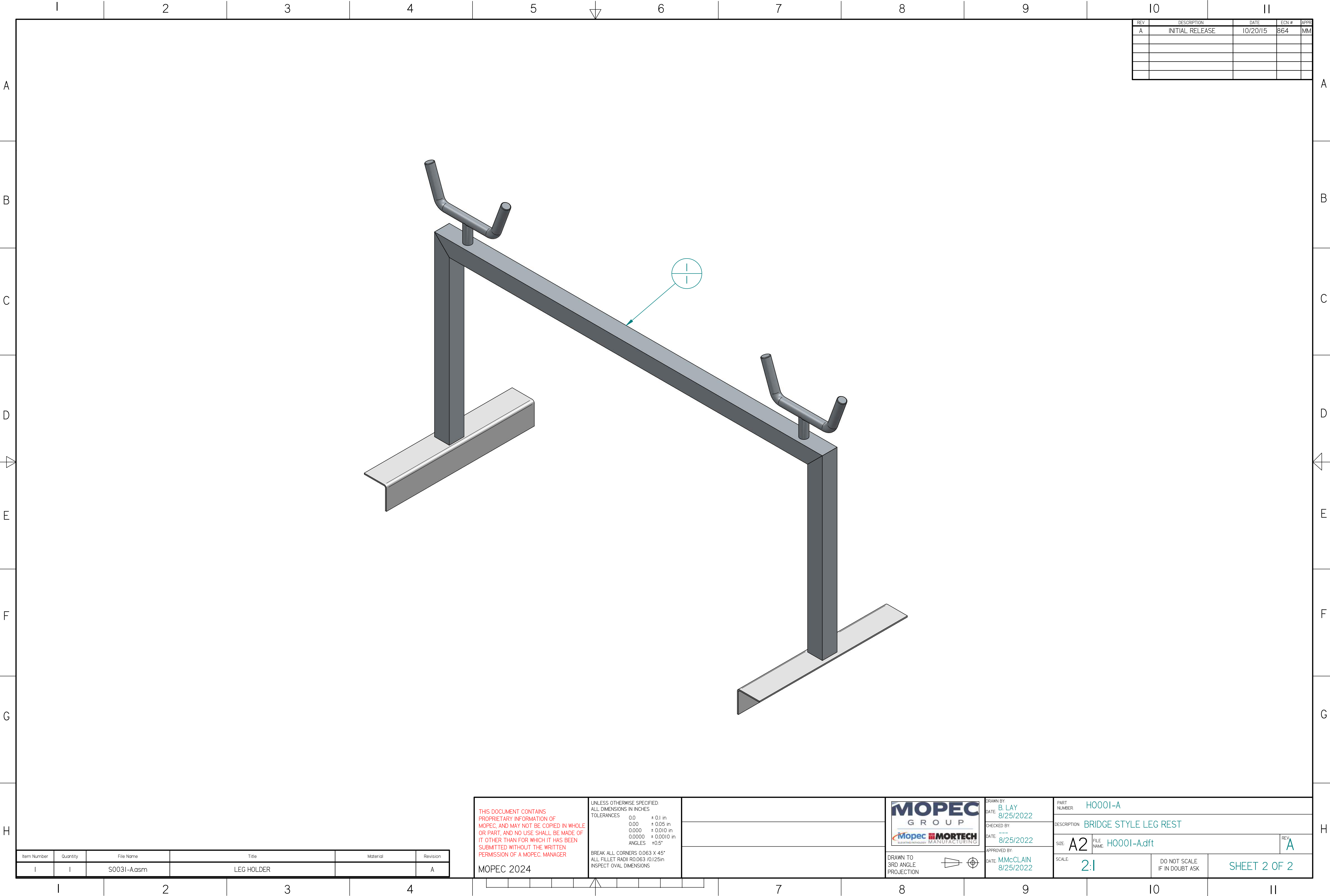
SCALE: 1:3.03

DO NOT SCALE IF IN DOUBT ASK

SHEET 1 OF 2

REV: A

H0001-A.dft



REV	DESCRIPTION	DATE	ECN #	APPR
A	INITIAL RELEASE	10/20/15	864	MM

Item Number	Quantity	File Name	Title	Material	Revision
I	I	S003I-A.asm	LEG HOLDER		A

THIS DOCUMENT CONTAINS
PROPRIETARY INFORMATION OF
MOPEC, AND MAY NOT BE COPIED IN WHOLE
OR PART, AND NO USE SHALL BE MADE OF
IT OTHER THAN FOR WHICH IT HAS BEEN
SUBMITTED WITHOUT THE WRITTEN
PERMISSION OF A MOPEC MANAGER

UNLESS OTHERWISE SPECIFIED:
ALL DIMENSIONS IN INCHES
TOLERANCES

0.0	± 0.1 in
0.00	± 0.05 in
0.000	± 0.010 in
0.0000	± 0.0010 in
ANGLES	± 0.5°

BREAK ALL CORNERS 0.063 X 45°
ALL FILLET RADII R0.063 / 0.125 in
INSPECT OVAL DIMENSIONS

MOPEC 2024

MOPEC GROUP
subcontractor **MORTECH**
MANUFACTURING

DRAWN TO
3RD ANGLE
PROJECTION

DRAWN BY:
DATE: 8/25/2022

CHECKED BY:
DATE: 8/25/2022

APPROVED BY:
DATE: 8/25/2022

PART NUMBER: H0001-A

DESCRIPTION: BRIDGE STYLE LEG REST

SIZE: A2

SCALE: 2:1

DO NOT SCALE
IF IN DOUBT ASK

SHEET 2 OF 2

REV: A

H0001-A.dft