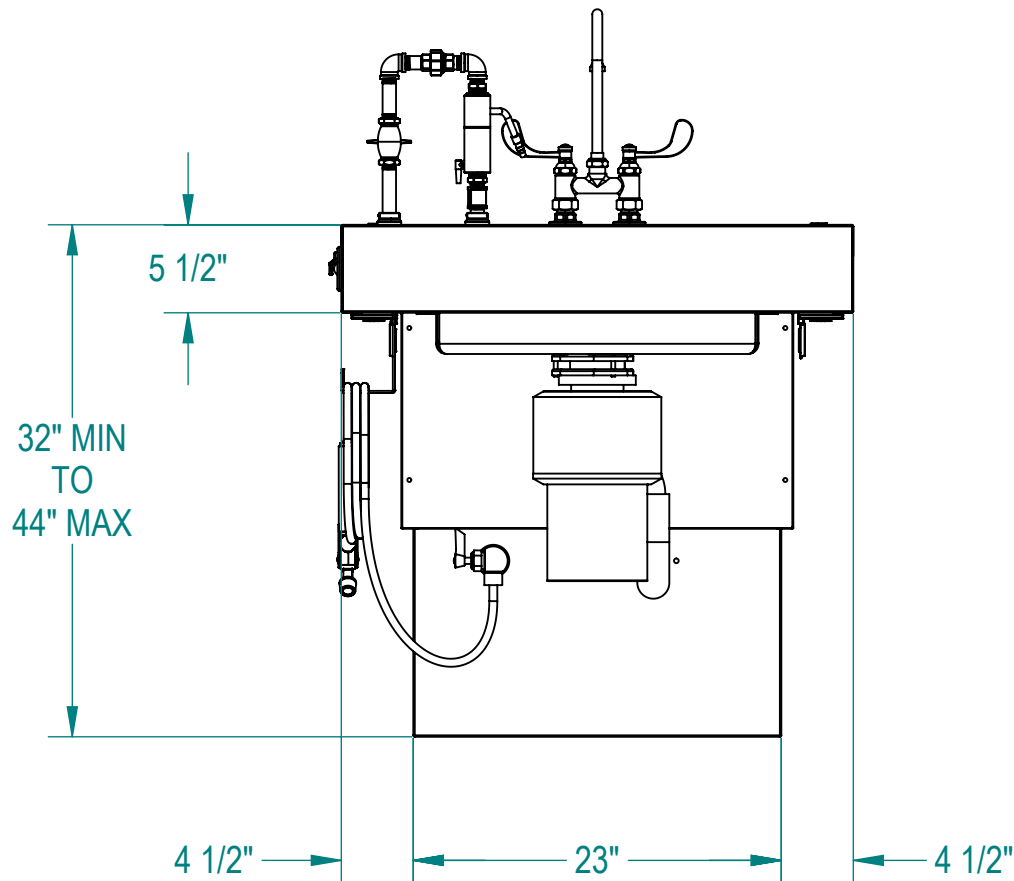
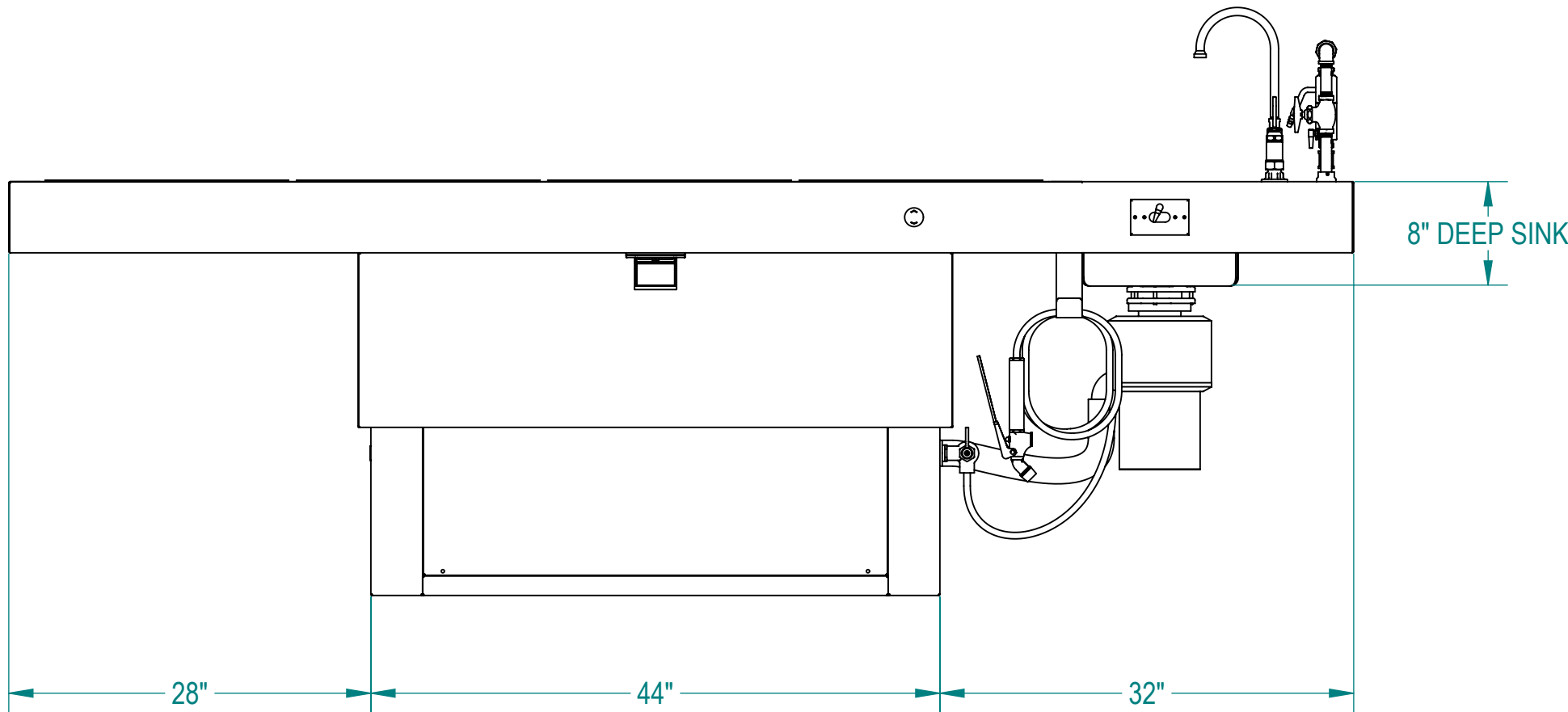
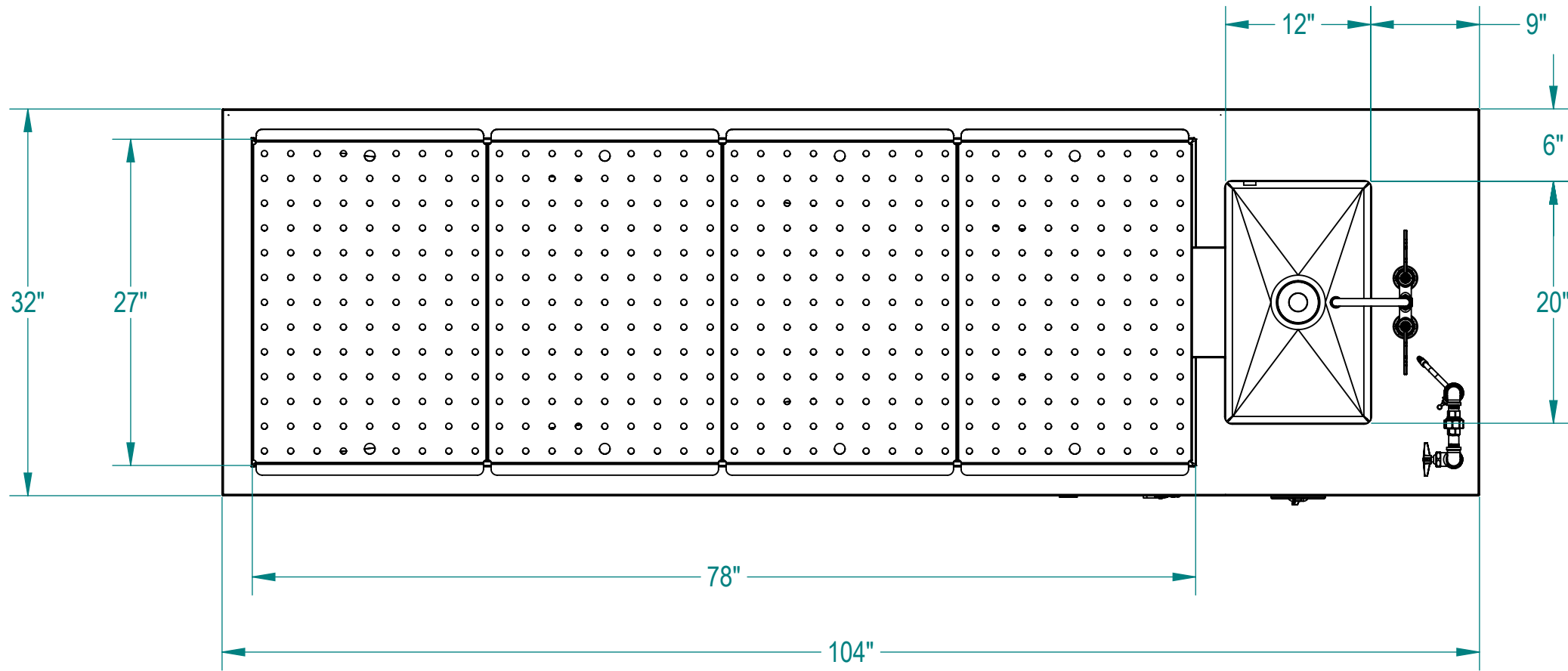


NOTES: UNLESS OTHERWISE SPECIFIED

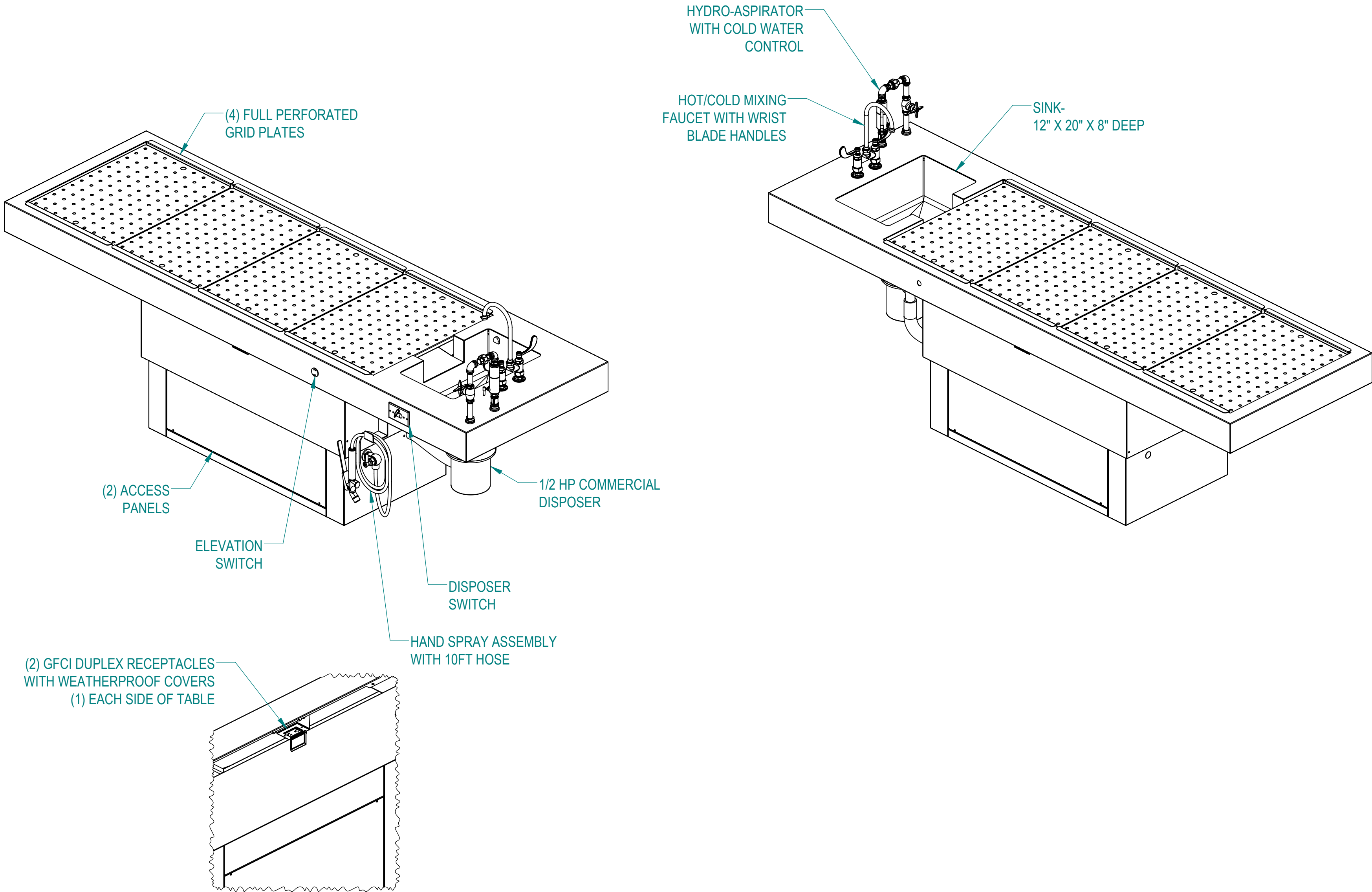
1. APPLICABLE STANDARDS AND SPECIFICATIONS;
ASME Y14.5-2009, DIMENSIONING AND TOLERANCING
ASME Y14.5-2007, ABBREVIATIONS



CUSTOMER		APPROVAL		PROPRIETARY THIS DOCUMENT AND THE DATE DISCLOSED HEREIN AND HERewith IS NOT TO BE REPRODUCED, USED, OR OTHERWISE DISCLOSED IN WHOLE OR IN PART TO ANYONE WITHOUT WRITTEN AUTHORIZATION FROM MOPEC GROUP.			MOPEC GROUP		mopec ELEVATING PATHOLOGY MORTECH ADVANCED SURVIVAL GROUP	
PROJECT		SIGNATURE		DATE			TITLE		MODEL 1036-41-ATD (CE200)	
							DO NOT SCALE DRAWING		APPROVALS	
							MATERIAL		DRAWN BY	
							304 STAINLESS STEEL		ELISEO S.	
							FINISH		CHECKED BY	
							#4		APPROVED BY	
									DATE	
									10/23/24	
									SIZE	
									C	
									DWG NO.	
									1036-41-ATD	
									REV.	
									A	
									SCALE	
									1:12	
									NEXT ASSY.	
									SHEET	
									1	
									OF	
									3	

NOTES: UNLESS OTHERWISE SPECIFIED

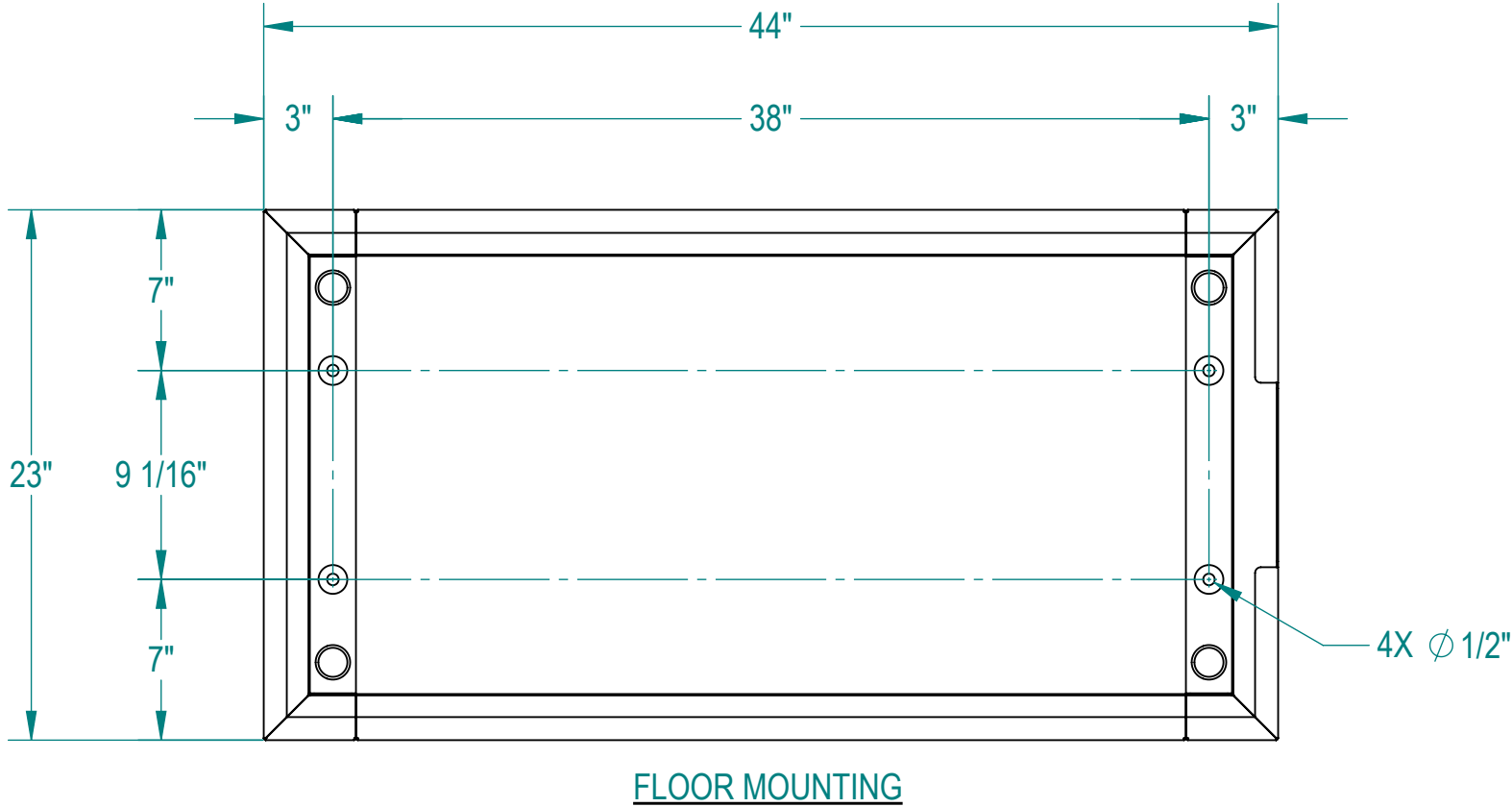
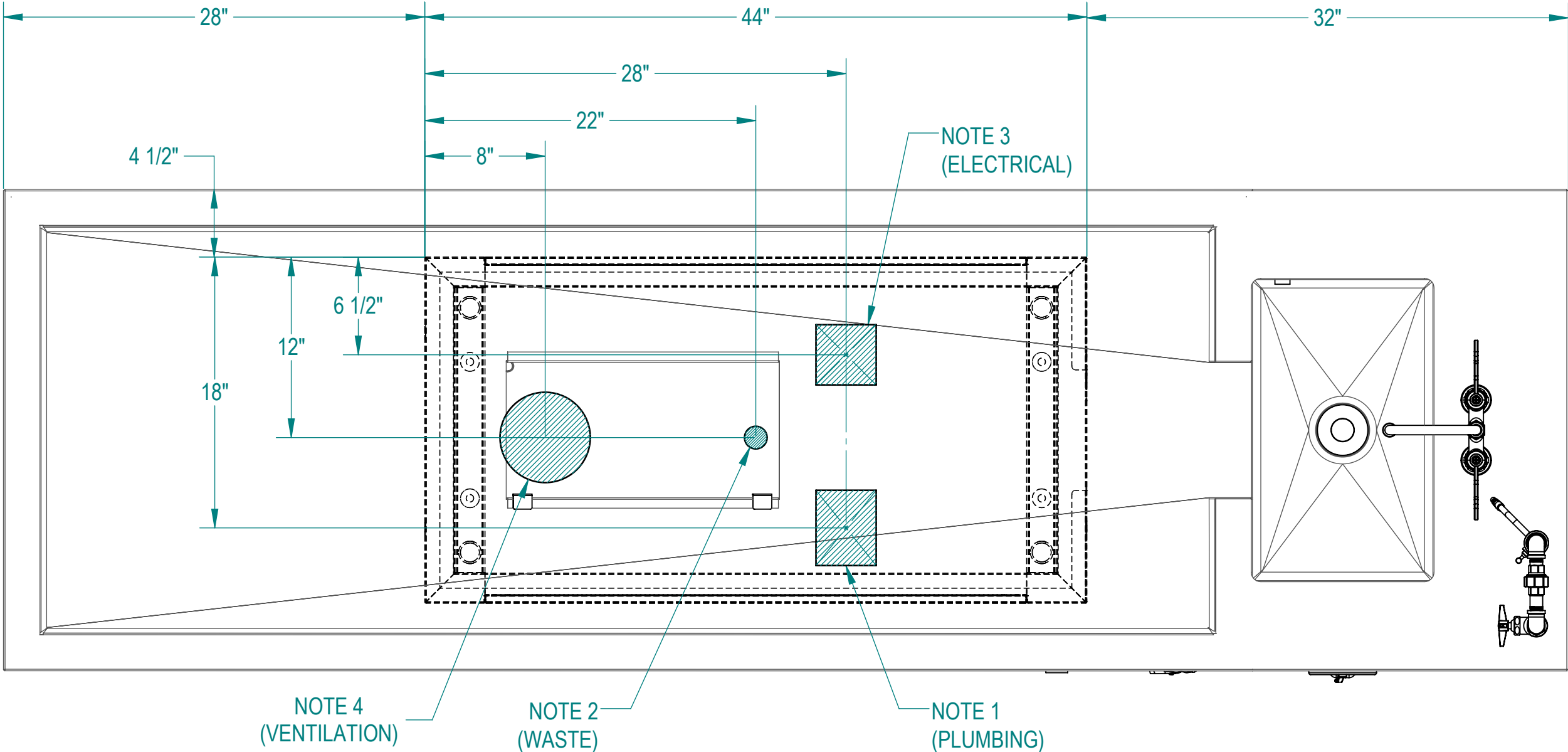
1. APPLICABLE STANDARDS AND SPECIFICATIONS;
ASME Y14.5-2009, DIMENSIONING AND TOLERANCING
ASME Y14.5-2007, ABBREVIATIONS



CUSTOMER		APPROVAL		PROPRIETARY			MOPEC GROUP		Mopec ELEVATING PATHOLOGY	
PROJECT				THIS DOCUMENT AND THE DATE DISCLOSED HEREIN AND HEREWITH IS NOT TO BE REPRODUCED, USED, OR OTHERWISE DISCLOSED IN WHOLE OR IN PART TO ANYONE WITHOUT WRITTEN AUTHORIZATION FROM MOPEC GROUP.			TITLE		MODEL 1036-41-ATD (CE200)	
				DO NOT SCALE DRAWING			APPROVALS		DATE	
				MATERIAL			DRAWN BY		10/23/24	
				304 STAINLESS STEEL			CHECKED BY			
				FINISH			APPROVED BY			
				#4						
							SIZE		REV.	
							C		A	
							SCALE		NEXT ASSY.	
							1:12		SHEET 2 OF 3	

UTILITY REQUIREMENTS:

1. A 4" X 5" AREA FOR INLET PLUMBING TO INCLUDE THE FOLLOWING:
(1) COLD WATER SUPPLY, 3/4" OD COPPER STUBBED OUT 6"
(1) HOT WATER SUPPLY, 1/2" OD COPPER STUBBED OUT 6"
SUPPLY SHUT-OFF VALVES AT EACH WATER SUPPLY
FLUSH LINES CLEAR BEFORE CONNECTING TO STATION
2. (1) STANDARD 1 1/2" WASTE LINE STUBBED OUT 6"
SUPPLY P-TRAP FOR DRAIN
3. A 4" X 4" AREA FOR ELECTRICAL INPUT TO INCLUDE THE FOLLOWING:
(1) 115V/60Hz/1PH/15A CIRCUIT FOR STATION
(1)115V/60Hz/1PH/15A CIRCUIT FOR DISPOSER
4. A 6" DIA DUCT EXHAUST CONNECTION:
RECOMMENDED EXHAUST: 450-500 CFM AT 0.50 STATIC PRESSURE
MEASURED AT THE 6" EXHAUST, PROVIDE WATER CAP OVER DUCT INLET.
EXISTING CONDITIONS MAY WARRANT AN INCREASE OR DECREASE,
CONTACT YOUR ENGINEERING DEPT.
5. PROVIDE 60-65 PSI WATER PRESSURE AND 4 GALLONS PER MINUTE OF
FLOW FOR PROPER OPERATION OF HYDRO ASPIRATOR
6. ELECTRICIAN TO PROVIDE LIQUID TIGHT JUNCTION BOX AND CONDUIT PER
LOCAL CODES.



CUSTOMER		APPROVAL		PROPRIETARY			MOPEC GROUP		Mopec ELEVATING PATHOLOGY	
PROJECT				THIS DOCUMENT AND THE DATE DISCLOSED HEREIN AND HEREWITH IS NOT TO BE REPRODUCED, USED, OR OTHERWISE DISCLOSED IN WHOLE OR IN PART TO ANYONE WITHOUT WRITTEN AUTHORIZATION FROM MOPEC GROUP.			TITLE		MODEL 1036-41-ATD (CE200)	
				DO NOT SCALE DRAWING			APPROVALS		DATE	
				MATERIAL			DRAWN BY		10/23/24	
				304 STAINLESS STEEL			CHECKED BY			
				FINISH			APPROVED BY			
				#4						
							SIZE		C	
							SCALE		1:8	
							NEXT ASSY.			
							SHEET		3 OF 3	
							REV.		A	