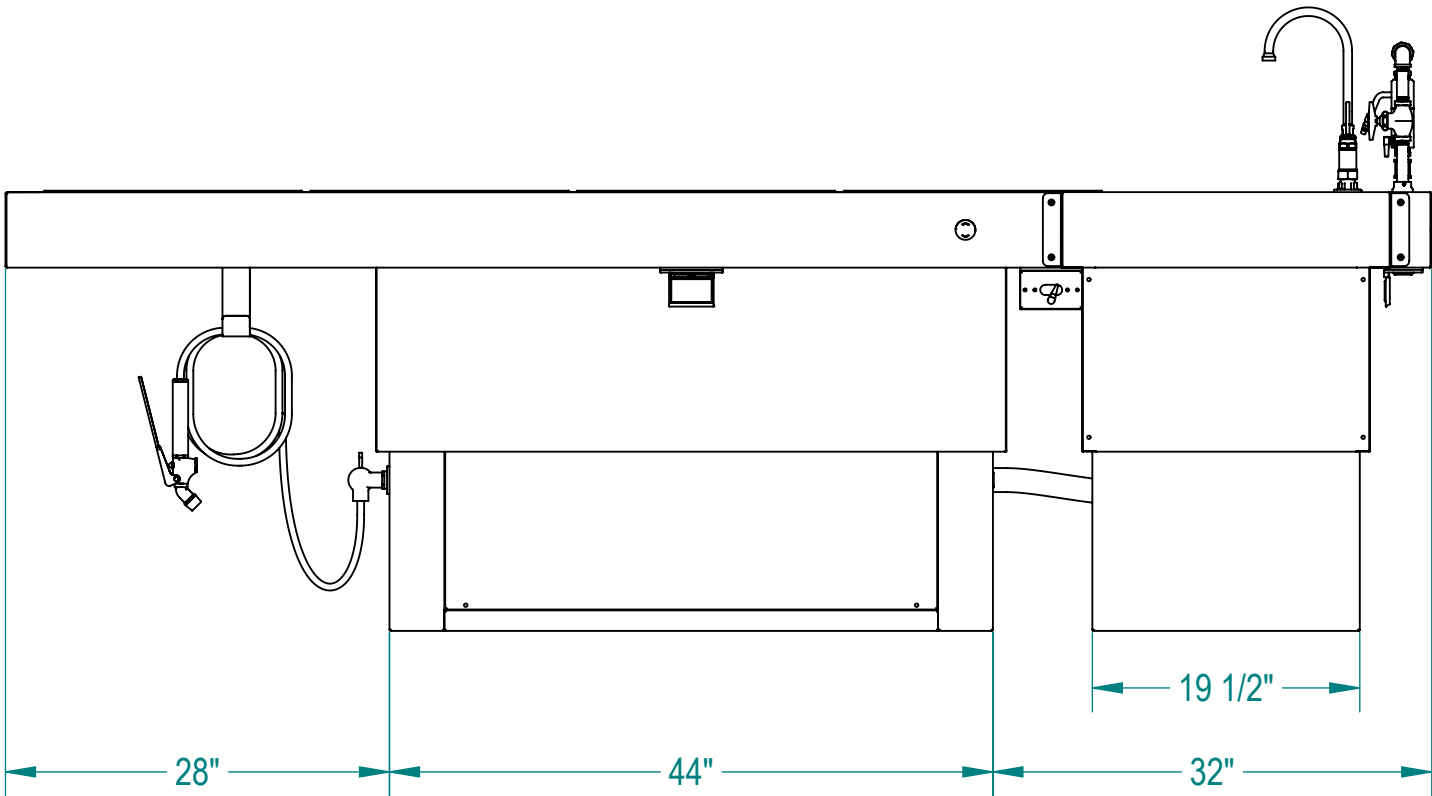
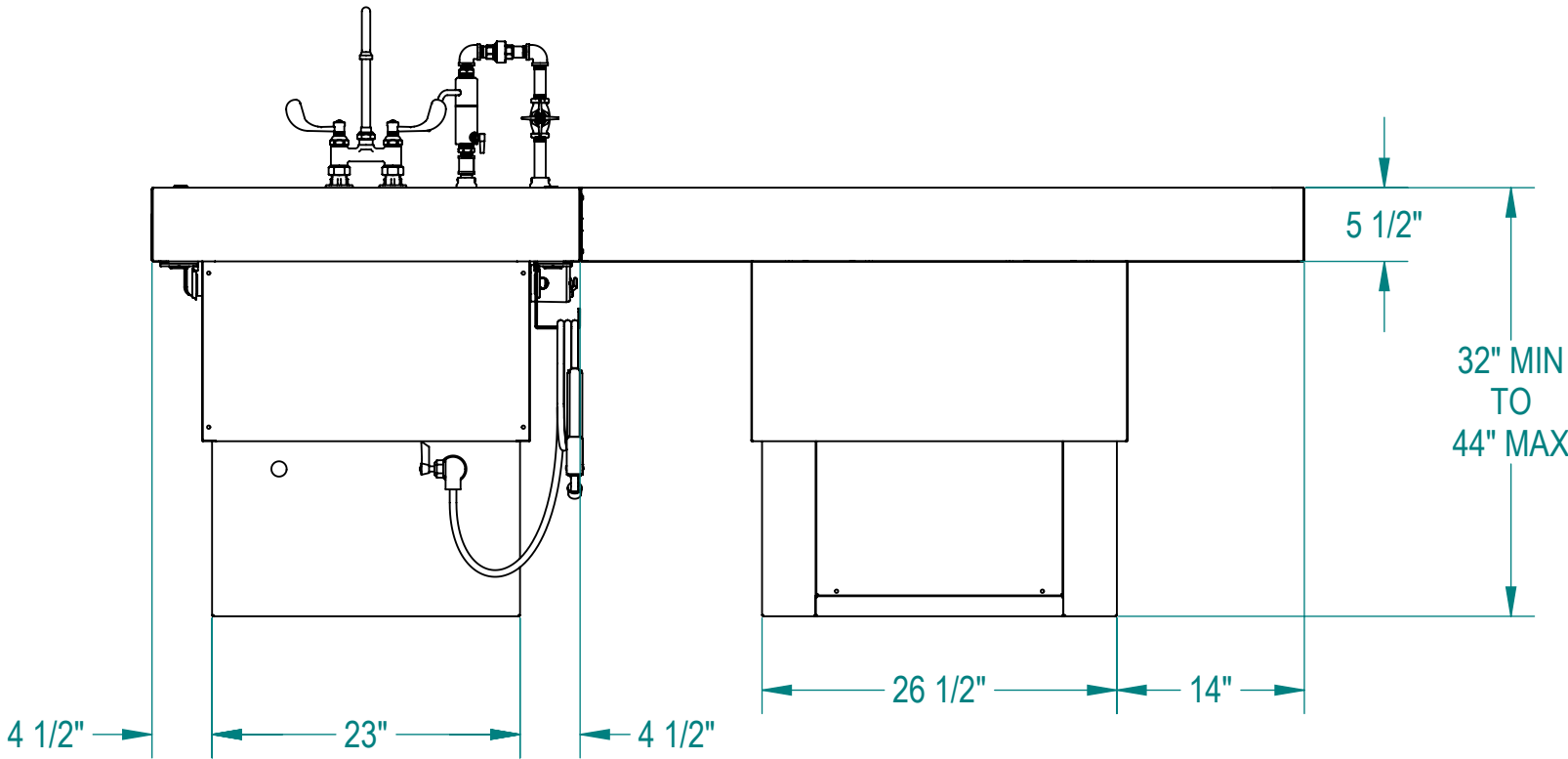
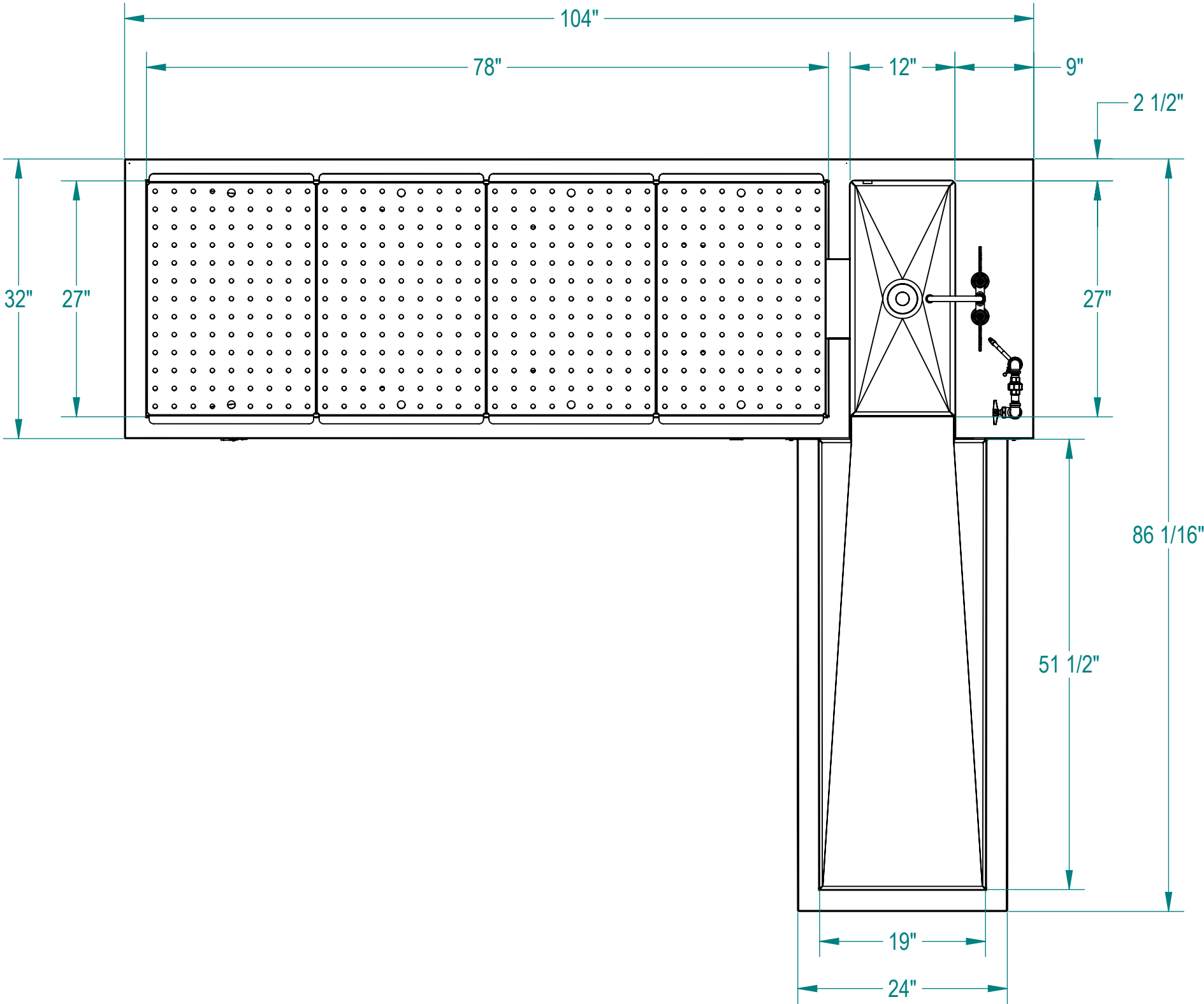




NOTES: UNLESS OTHERWISE SPECIFIED

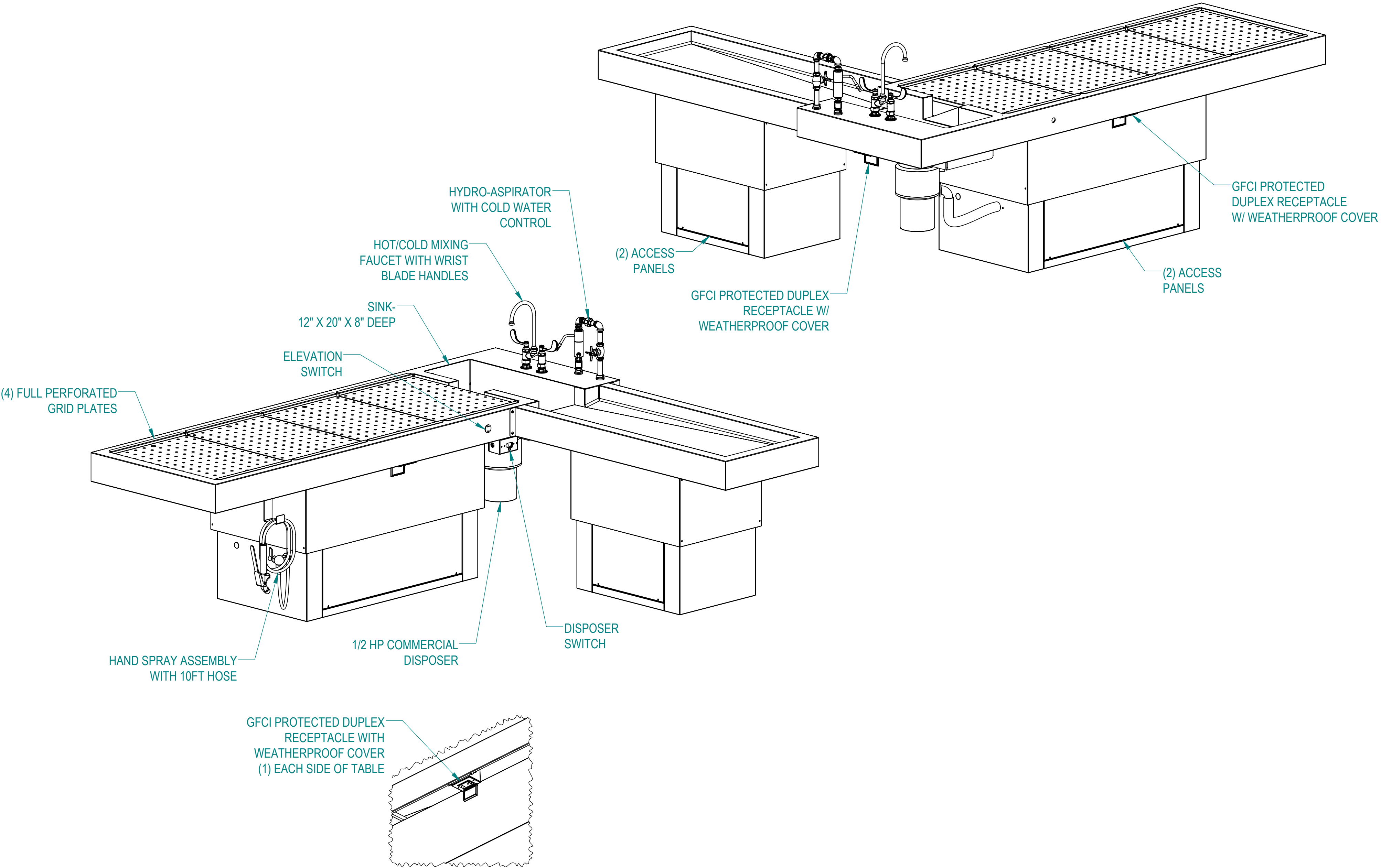
1. APPLICABLE STANDARDS AND SPECIFICATIONS;  
ASME Y14.5-2009, DIMENSIONING AND TOLERANCING  
ASME Y14.5-2007, ABBREVIATIONS



CUSTOMER		APPROVAL		PROPRIETARY  THIS DOCUMENT AND THE DATE DISCLOSED HEREIN AND HEREWITH IS NOT TO BE REPRODUCED, USED, OR OTHERWISE DISCLOSED IN WHOLE OR IN PART TO ANYONE WITHOUT WRITTEN AUTHORIZATION FROM MOPEC GROUP.						411 North Aerojet Avenue Azusa, CA 91702 tel: (800) 410-0100 (626) 334-1471 fax: (626) 334-1704 <a href="http://www.mortechmfg.com">www.mortechmfg.com</a>			
PROJECT						TITLE <b>MODEL 1036-19AR (CE650)</b> <b>PEDESTAL AUTOPSY TABLE, L-SHAPED, ADJUSTABLE HEIGHT, RIGHT</b>							
				DO NOT SCALE DRAWING		APPROVALS		DATE					
				MATERIAL <b>304 STAINLESS STEEL</b>		DRAWN BY ELISEO S.		11/06/24					
				FINISH <b>#4</b>		CHECKED BY							
		SIGNATURE		DATE		APPROVED BY				SCALE			
										1:14			
										NEXT ASSY.			
										SHEET			
										1 OF 4			
										REV.			
										A			

NOTES: UNLESS OTHERWISE SPECIFIED

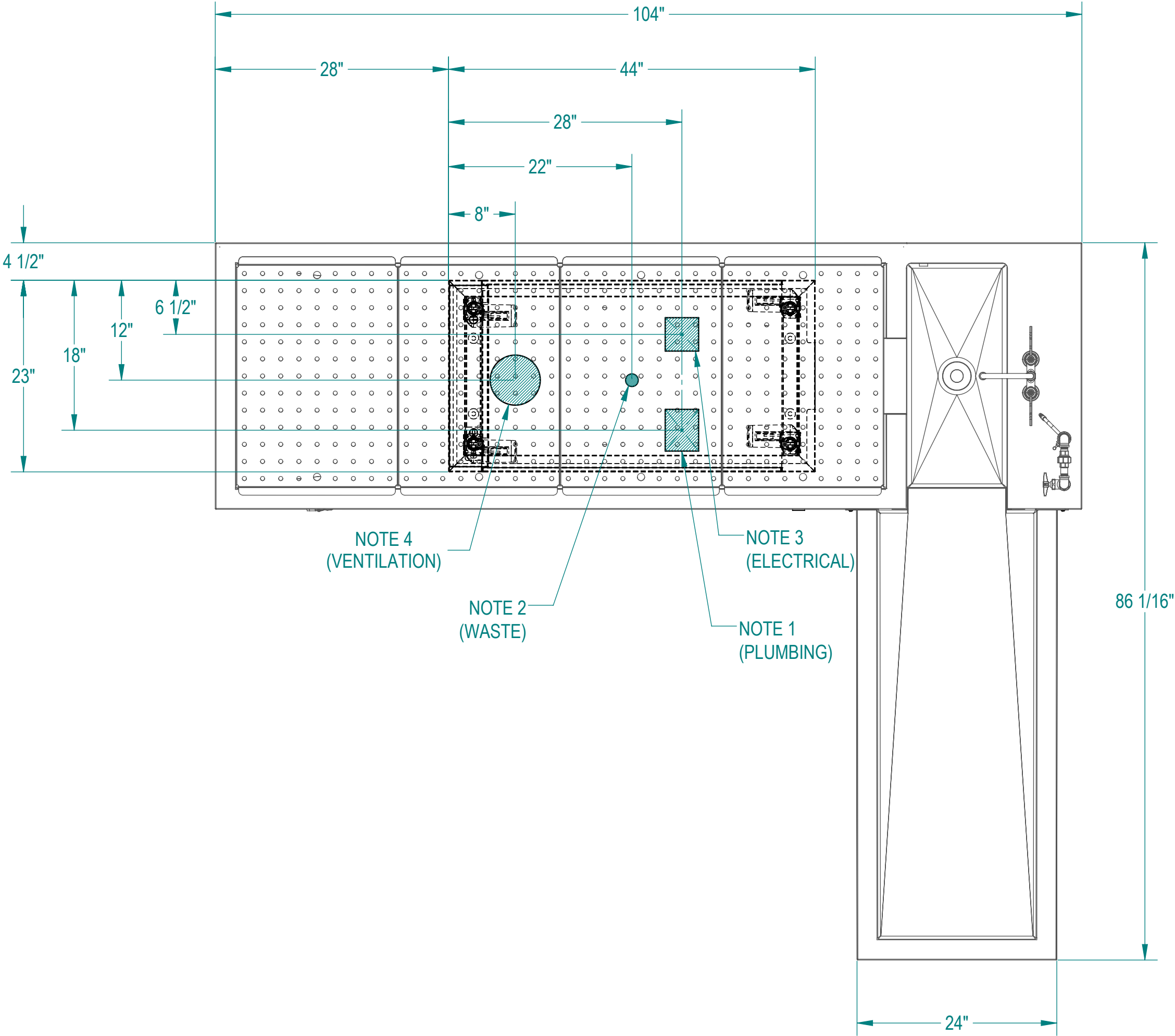
1. APPLICABLE STANDARDS AND SPECIFICATIONS;  
ASME Y14.5-2009, DIMENSIONING AND TOLERANCING  
ASME Y14.5-2007, ABBREVIATIONS



CUSTOMER		APPROVAL		PROPRIETARY		MOPEC GROUP		mopec ELEVATING PATHOLOGY		411 North Aerojet Avenue Azusa, CA 91702 tel: (800) 410-0100 (626) 334-1471 fax: (626) 334-1704 www.mopecgroup.com	
PROJECT				THIS DOCUMENT AND THE DATE DISCLOSED HEREIN AND HERewith IS NOT TO BE REPRODUCED, USED, OR OTHERWISE DISCLOSED IN WHOLE OR IN PART TO ANYONE WITHOUT WRITTEN AUTHORIZATION FROM MOPEC GROUP.		TITLE		MODEL 1036-19AR (CE650)			
				DO NOT SCALE DRAWING		APPROVALS		DATE		SIZE	
				MATERIAL		DRAWN BY		11/06/24		DWG NO.	
				304 STAINLESS STEEL		CHECKED BY				C	
				FINISH		APPROVED BY				SCALE	
				#4						1:12	
										NEXT ASSY.	
										SHEET	
										2	
										OF	
										4	
										REV.	
										A	

UTILITY REQUIREMENTS:

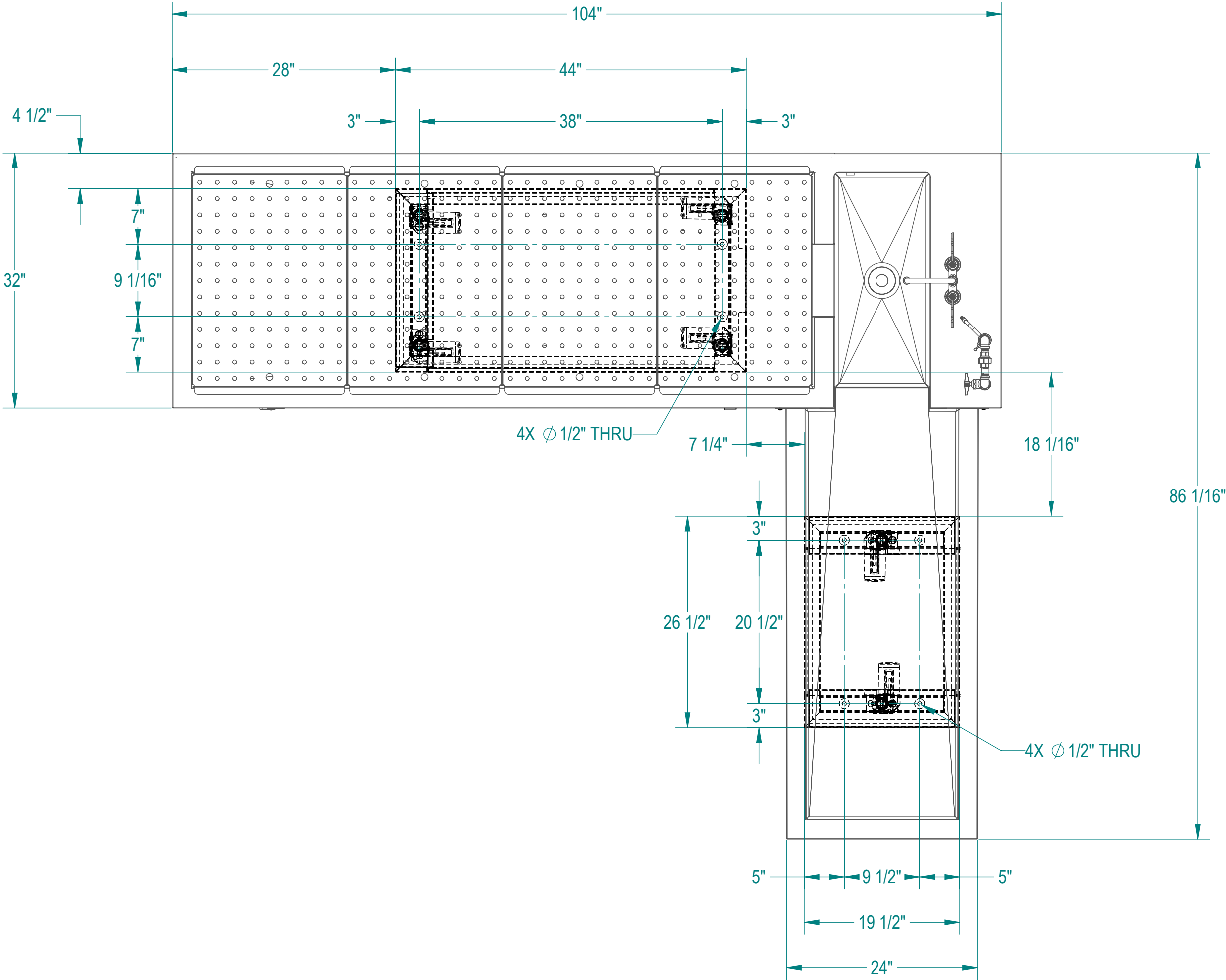
1. A 4" X 5" AREA FOR INLET PLUMBING TO INCLUDE THE FOLLOWING:  
(1) COLD WATER SUPPLY, 3/4" OD COPPER STUBBED OUT 6"  
(1) HOT WATER SUPPLY, 1/2" OD COPPER STUBBED OUT 6"  
SUPPLY SHUT-OFF VALVES AT EACH WATER SUPPLY  
FLUSH LINES CLEAR BEFORE CONNECTING TO STATION
2. (1) STANDARD 1 1/2" WASTE LINE STUBBED OUT 6"  
SUPPLY P-TRAP FOR DRAIN
3. A 4" X 4" AREA FOR ELECTRICAL INPUT TO INCLUDE THE FOLLOWING:  
(1) 115V/60Hz/1PH/15A CIRCUIT FOR STATION  
(1)115V/60Hz/1PH/15A CIRCUIT FOR DISPOSER
4. A 6" DIA DUCT EXHAUST CONNECTION:  
RECOMMENDED EXHAUST: 450-500 CFM AT 0.50 STATIC PRESSURE  
MEASURED AT THE 6" EXHAUST, PROVIDE WATER CAP OVER DUCT INLET.  
EXISTING CONDITIONS MAY WARRANT AN INCREASE OR DECREASE,  
CONTACT YOUR ENGINEERING DEPT.
5. PROVIDE 60-65 PSI WATER PRESSURE AND 4 GALLONS PER MINUTE OF  
FLOW FOR PROPER OPERATION OF HYDRO ASPIRATOR
6. ELECTRICIAN TO PROVIDE LIQUID TIGHT JUNCTION BOX AND CONDUIT PER  
LOCAL CODES.





CUSTOMER	APPROVAL		PROPRIETARY THIS DOCUMENT AND THE DATE DISCLOSED HEREIN AND HEREWITH IS NOT TO BE REPRODUCED, USED, OR OTHERWISE DISCLOSED IN WHOLE OR IN PART TO ANYONE WITHOUT WRITTEN AUTHORIZATION FROM MOPEC GROUP.			TITLE MODEL 1036-19AR (CE650) PEDESTAL AUTOPSY TABLE, L-SHAPED, ADJUSTABLE HEIGHT, RIGHT	MOPEC GROUP ELEVATING PATHOLOGY MORTECH 411 North Aerojet Avenue Azusa, CA 91702 tel: (800) 410-0100 (626) 334-1471 fax: (626) 334-1704 www.mopecgroup.com		
PROJECT	SIGNATURE		DATE		DO NOT SCALE DRAWING	APPROVALS	DATE	SIZE	DWG NO.
					MATERIAL	CHECKED BY		C	1036-19AR
					FINISH	APPROVED BY		SCALE	1:12
				#4				NEXT ASSY.	
								SHEET	3 OF 4

NOTES: UNLESS OTHERWISE SPECIFIED

1.
- APPLICABLE STANDARDS AND SPECIFICATIONS;  
ASME Y14.5-2009, DIMENSIONING AND TOLERANCING  
ASME Y14.5-2007, ABBREVIATIONS



FLOOR MOUNTING  
DETAIL

CUSTOMER		APPROVAL		PROPRIETARY  THIS DOCUMENT AND THE DATE DISCLOSED HEREIN AND HEREWITH IS NOT TO BE REPRODUCED, USED, OR OTHERWISE DISCLOSED IN WHOLE OR IN PART TO ANYONE WITHOUT WRITTEN AUTHORIZATION FROM MOPEC GROUP.							411 North Aerojet Avenue Azusa, CA 91702 tel: (800) 410-0100 (626) 334-1471 fax: (626) 334-1704 <a href="http://www.mopectechmfg.com">www.mopectechmfg.com</a>				
PROJECT							TITLE <b>MODEL 1036-19AR (CE650)</b> <b>PEDESTAL AUTOPSY TABLE, L-SHAPED, ADJUSTABLE HEIGHT, RIGHT</b>								
				DO NOT SCALE DRAWING		APPROVALS		DATE							
				MATERIAL <b>304 STAINLESS STEEL</b>		DRAWN BY ELISEO S.		11/06/24							
				FINISH <b>#4</b>		CHECKED BY				SIZE <b>C</b>		DWG NO. <b>1036-19AR</b>		REV. <b>A</b>	
						APPROVED BY				SCALE <b>1:12</b>		NEXT ASSY.		SHEET <b>4</b> OF <b>4</b>	