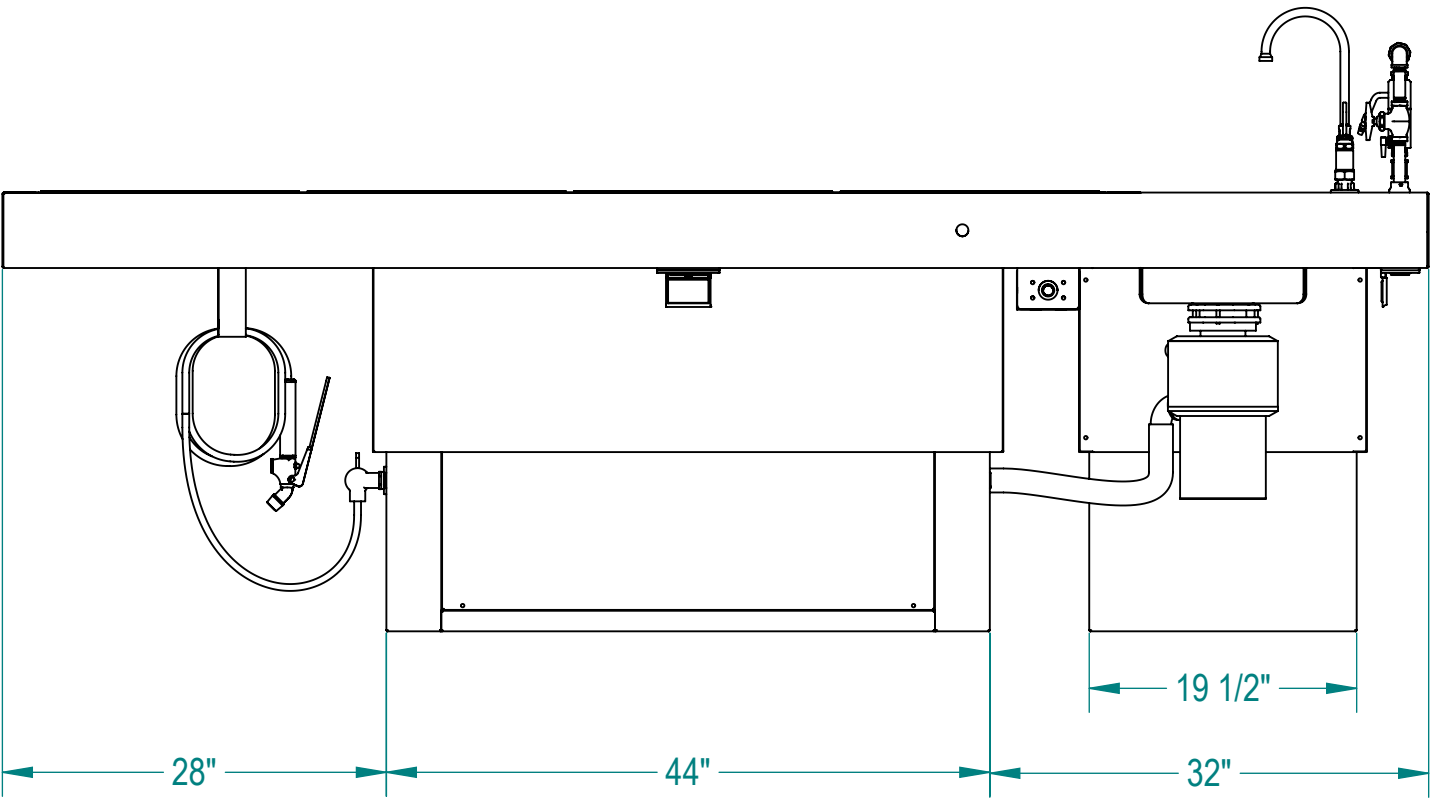
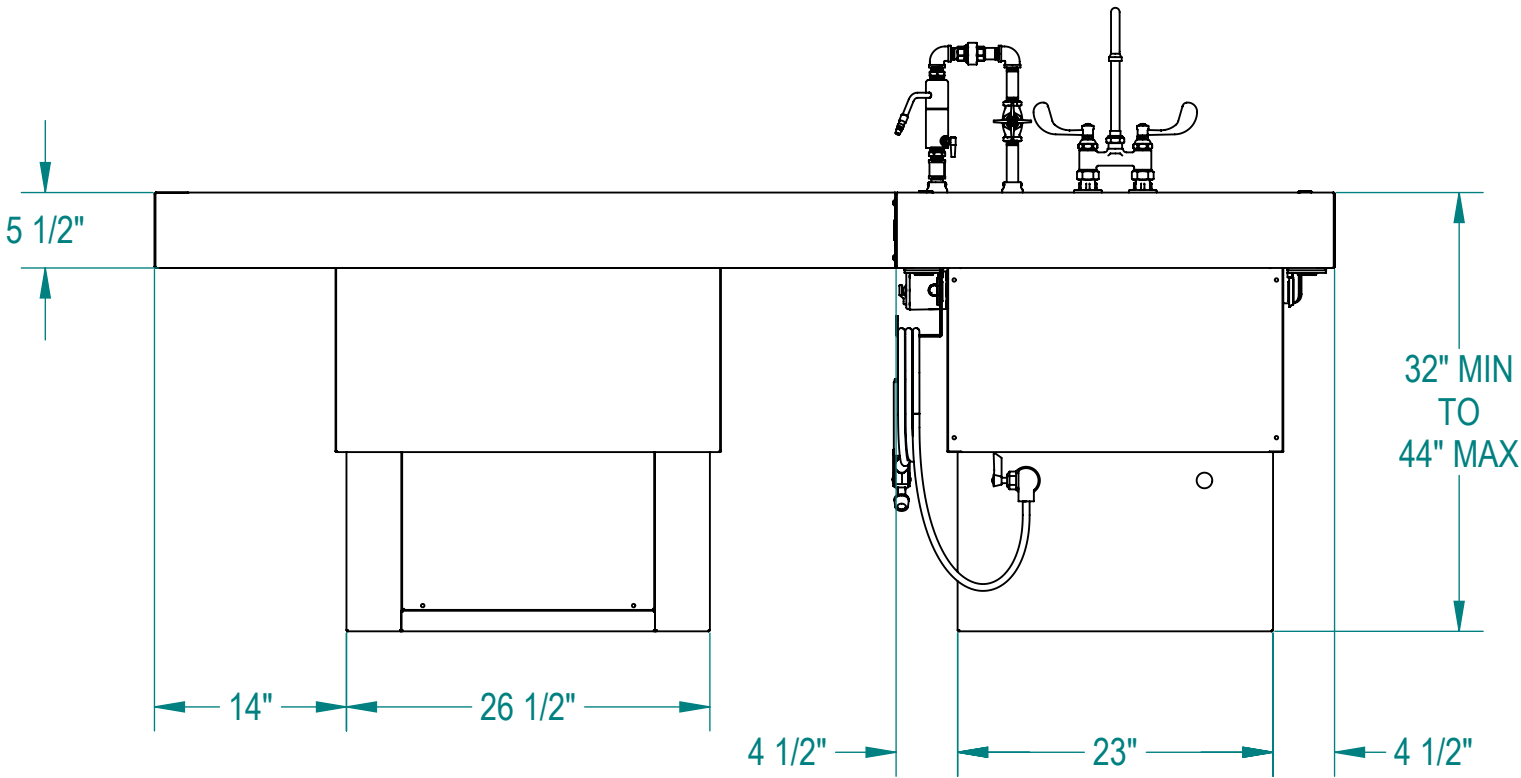
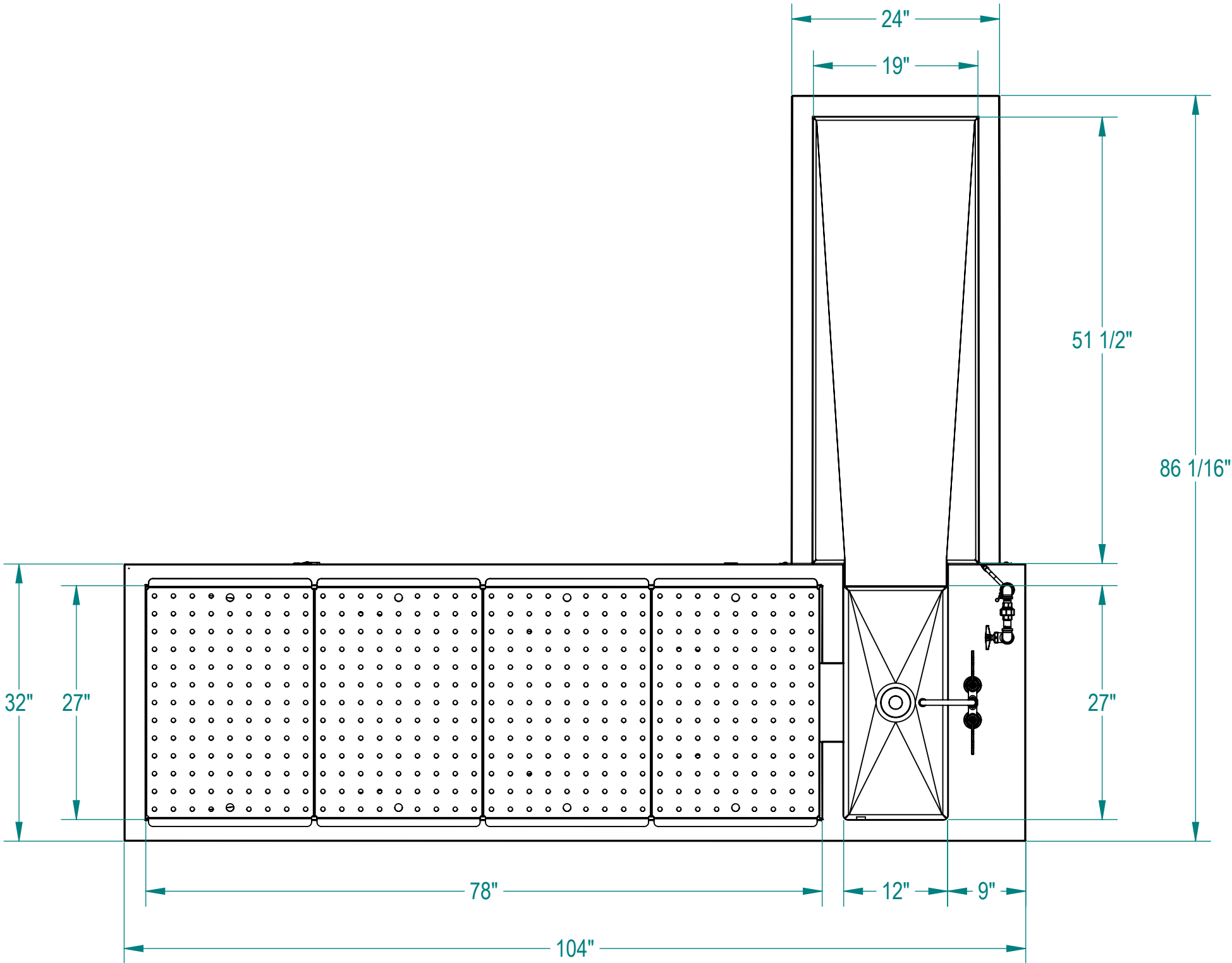


NOTES: UNLESS OTHERWISE SPECIFIED

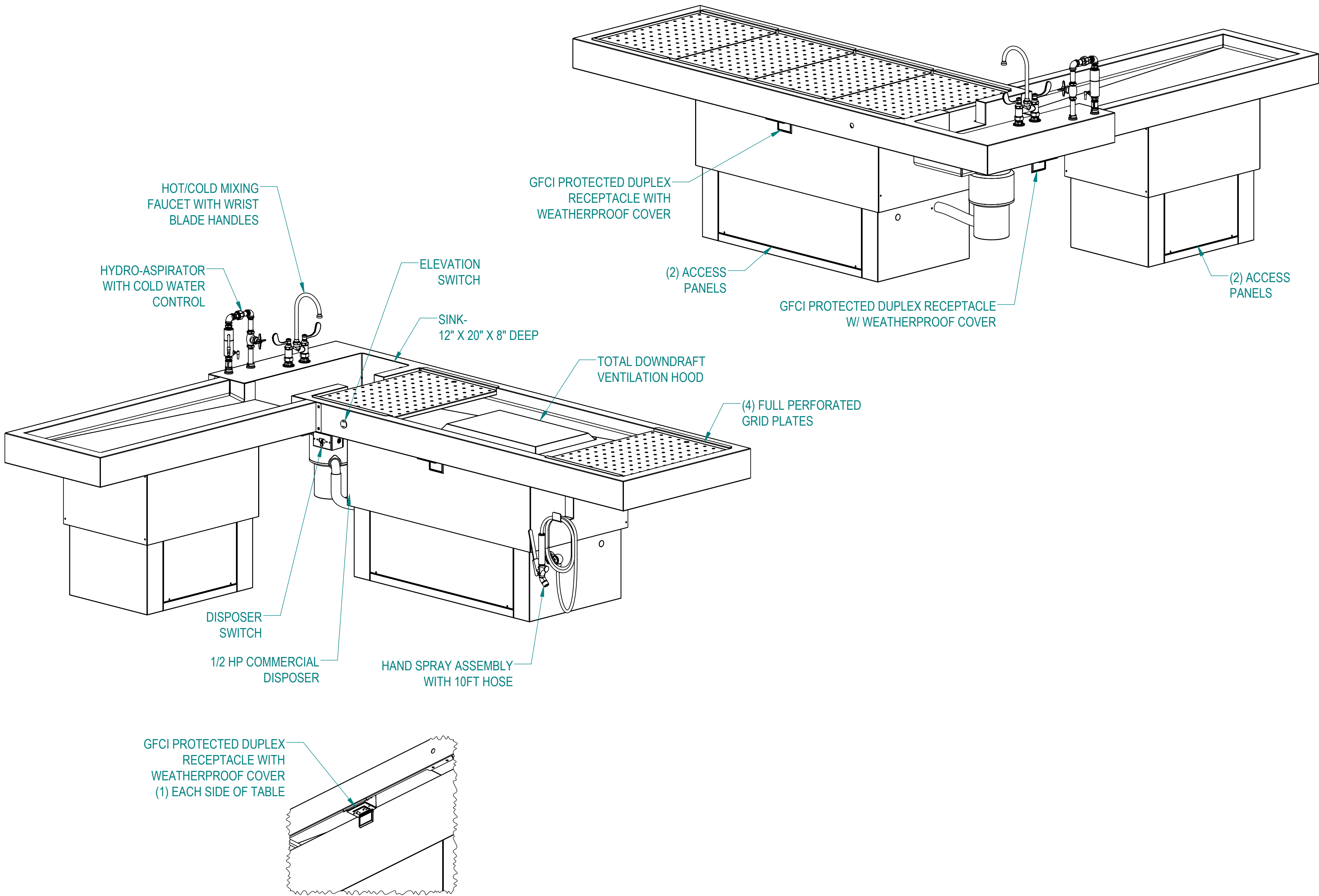
1.
- APPLICABLE STANDARDS AND SPECIFICATIONS;
ASME Y14.5-2009, DIMENSIONING AND TOLERANCING
ASME Y14.5-2007, ABBREVIATIONS



CUSTOMER		APPROVAL		<div>PROPRIETARY</div> <div>THIS DOCUMENT AND THE DATE DISCLOSED HEREIN AND HEREWITH IS NOT TO BE REPRODUCED, USED, OR OTHERWISE DISCLOSED IN WHOLE OR IN PART TO ANYONE WITHOUT WRITTEN AUTHORIZATION FROM MOPEC GROUP.</div>			<div><div><div>MOPEC</div><div>GROUP</div></div><div><div>Mopec</div><div>ELEVATING PATHOLOGY</div><div>MORTECH</div><div>MADE IN THE USA</div></div></div> <div>411 North Aerojet Avenue Azusa, CA 91702 tel: (800) 410-0100 (626) 334-1471 fax: (626) 334-1704 www.mortechmfg.com</div>												
PROJECT		SIGNATURE		DATE		TITLE		MODEL 1036-19AL (CE750) PEDESTAL AUTOPSY TABLE, L-SHAPED, ADJUSTABLE HEIGHT, LEFT											
						DO NOT SCALE DRAWING		APPROVALS		DATE									
						MATERIAL		DRAWN BY		11/06/24									
						304 STAINLESS STEEL		ELISEO S.		CHECKED BY									
						FINISH		APPROVED BY											
				#4		SCALE		1:14		NEXT ASSY.		SHEET		1		OF		4	

NOTES: UNLESS OTHERWISE SPECIFIED

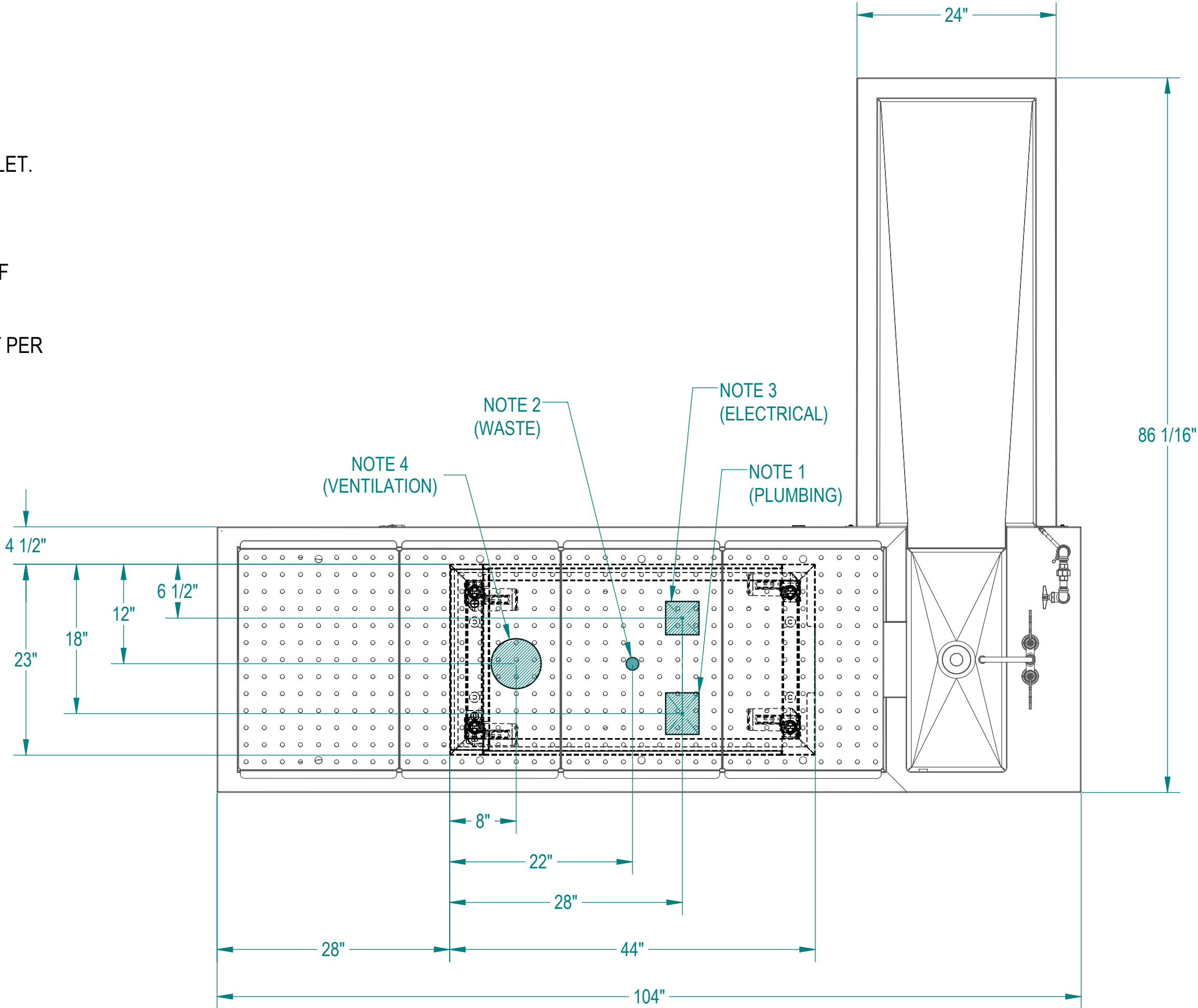
1. APPLICABLE STANDARDS AND SPECIFICATIONS;
ASME Y14.5-2009, DIMENSIONING AND TOLERANCING
ASME Y14.5-2007, ABBREVIATIONS






CUSTOMER		APPROVAL		PROPRIETARY			MOPEC GROUP		mopec ELEVATING PATHOLOGY		411 North Aerojet Avenue Azusa, CA 91702 tel: (800) 410-0100 (626) 334-1471 fax: (626) 334-1704 www.mopecgroup.com	
PROJECT				THIS DOCUMENT AND THE DATE DISCLOSED HEREIN AND HEREWITH IS NOT TO BE REPRODUCED, USED, OR OTHERWISE DISCLOSED IN WHOLE OR IN PART TO ANYONE WITHOUT WRITTEN AUTHORIZATION FROM MOPEC GROUP.			TITLE		MODEL 1036-19AL (CE750)			
				DO NOT SCALE DRAWING			APPROVALS		DATE		SIZE	
				MATERIAL			DRAWN BY		11/06/24		DWG NO.	
				304 STAINLESS STEEL			CHECKED BY				SCALE	
				FINISH			APPROVED BY				NEXT ASSY.	
				#4							SHEET	
											2	
											OF	
											4	
											REV.	
											A	

UTILITY REQUIREMENTS:

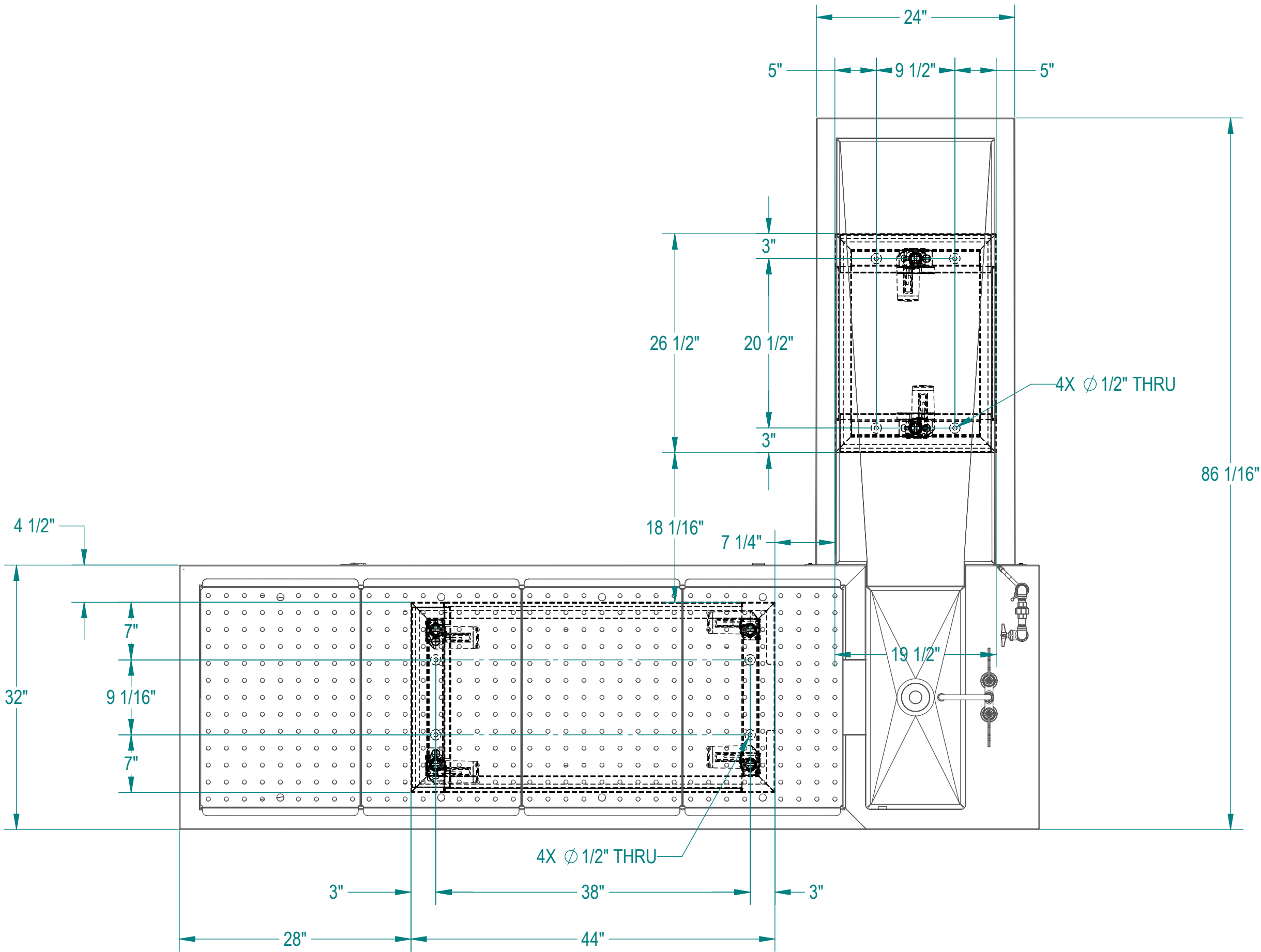
1. A 4" X 5" AREA FOR INLET PLUMBING TO INCLUDE THE FOLLOWING:
(1) COLD WATER SUPPLY, 3/4" OD COPPER STUBBED OUT 6"
(1) HOT WATER SUPPLY, 1/2" OD COPPER STUBBED OUT 6"
SUPPLY SHUT-OFF VALVES AT EACH WATER SUPPLY
FLUSH LINES CLEAR BEFORE CONNECTING TO STATION
2. (1) STANDARD 1 1/2" WASTE LINE STUBBED OUT 6"
SUPPLY P-TRAP FOR DRAIN
3. A 4" X 4" AREA FOR ELECTRICAL INPUT TO INCLUDE THE FOLLOWING:
(1) 115V/60Hz/1PH/15A CIRCUIT FOR STATION
(1)115V/60Hz/1PH/15A CIRCUIT FOR DISPOSER
4. A 6" DIA DUCT EXHAUST CONNECTION:
RECOMMENDED EXHAUST: 450-500 CFM AT 0.50 STATIC PRESSURE
MEASURED AT THE 6" EXHAUST, PROVIDE WATER CAP OVER DUCT INLET.
EXISTING CONDITIONS MAY WARRANT AN INCREASE OR DECREASE,
CONTACT YOUR ENGINEERING DEPT.
5. PROVIDE 60-65 PSI WATER PRESSURE AND 4 GALLONS PER MINUTE OF
FLOW FOR PROPER OPERATION OF HYDRO ASPIRATOR
6. ELECTRICIAN TO PROVIDE LIQUID TIGHT JUNCTION BOX AND CONDUIT PER
LOCAL CODES.



CUSTOMER		APPROVAL		<div>PROPRIETARY</div> <div>THIS DOCUMENT AND THE DATE DISCLOSED HEREIN AND HEREWITH IS NOT TO BE REPRODUCED, USED, OR OTHERWISE DISCLOSED IN WHOLE OR IN PART TO ANYONE WITHOUT WRITTEN AUTHORIZATION FROM MOPEC GROUP.</div>			<div><div>MOPEC GROUP</div></div> <div><div>mopec ELEVATING PATHOLOGY</div></div> <div><div>MORTECH</div></div> <div>411 North Aerojet Avenue Azusa, CA 91702 tel: (800) 410-0100 (626) 334-1471 fax: (626) 334-1704 www.mopectechmfg.com</div>				
PROJECT							<div>TITLE</div> <div>MODEL 1036-19AL (CE750) PEDESTAL AUTOPSY TABLE, L-SHAPED, ADJUSTABLE HEIGHT, LEFT</div>				
				DO NOT SCALE DRAWING		APPROVALS		DATE		<div>SIZE</div> <div>C</div> <div>DWG NO.</div> <div>1036-19AL</div> <div>SCALE</div> <div>1:12</div> <div>NEXT ASSY.</div> <div>SHEET</div> <div>3</div> <div>OF</div> <div>4</div>	
				MATERIAL		DRAWN BY		11/06/24			
				304 STAINLESS STEEL		ELISEO S.					
				FINISH		CHECKED BY				<div>REV.</div> <div>A</div>	
				#4		APPROVED BY					

NOTES: UNLESS OTHERWISE SPECIFIED

1. APPLICABLE STANDARDS AND SPECIFICATIONS;
ASME Y14.5-2009, DIMENSIONING AND TOLERANCING
ASME Y14.5-2007, ABBREVIATIONS



FLOOR MOUNTING
DETAIL

CUSTOMER	APPROVAL		<div>PROPRIETARY</div> <div>THIS DOCUMENT AND THE DATE DISCLOSED HEREIN AND HEREWIT IS NOT TO BE REPRODUCED, USED, OR OTHERWISE DISCLOSED IN WHOLE OR IN PART TO ANYONE WITHOUT WRITTEN AUTHORIZATION FROM MOPEC GROUP.</div>			<div><div><div>MOPEC</div><div>GROUP</div></div><div><div>Mopec</div><div>ELEVATING PATHOLOGY</div></div><div><div>MORTECH</div><div>ELEVATING PATHOLOGY</div></div></div>		<div>411 North Aerojet Avenue Azusa, CA 91702 tel: (800) 410-0100 (626) 334-1471 fax: (626) 334-1704 www.mopectechmfg.com</div>		
PROJECT						<div>TITLE</div> <div>MODEL 1036-19AL (CE750) PEDESTAL AUTOPSY TABLE, L-SHAPED, ADJUSTABLE HEIGHT, LEFT</div>				
<div>SIGNATURE</div> <div>DATE</div>			<div>DO NOT SCALE DRAWING</div>		<div>APPROVALS</div>		<div>DATE</div>		<div>SIZE</div> <div>C</div> <div>DWG NO.</div> <div>1036-19AL</div> <div>SCALE</div> <div>1:12</div> <div>NEXT ASSY.</div> <div>SHEET</div> <div>4</div> <div>OF</div> <div>4</div>	
			<div>MATERIAL</div> <div>304 STAINLESS STEEL</div>		<div>DRAWN BY</div> <div>ELISEO S.</div>		<div>11/06/24</div>			
			<div>FINISH</div> <div>#4</div>		<div>CHECKED BY</div>					
					<div>APPROVED BY</div>					