



Mopec FP025 Mini Formalin Pumping Station





DISCLAIMER

Copyright © 2023 by MOPEC

All rights reserved. No part of this publication may be reproduced, distributed, or transmitted in any form or by any means, including photocopying, recording, or other electronic or mechanical methods, without the prior written permission of the publisher. For permission requests, write to the publisher, addressed "Attention: Permissions Coordinator," at the address below.

Mopec
800 Tech Row
Madison Heights, MI 48071
Phone: 1-800-362-8491
email: customerservice@mopec.com

Owner's Record

Model No.: _____

Serial No.: _____

Voltage: _____

Dealers Name: _____

Dealers Address: _____

Date of Purchase: _____

Document Revisions

Date	Version Number	Document Changes
10/9/23	1.0	Initial Release
12/7/23	2.0	Cubitainer/Formalin supply container callouts updated

Table of Contents

<u>1</u>	<u>PREFACE.....</u>	<u>5</u>
1.1	Description of use.....	5
1.2	Notations Used in This Manual.....	5
1.3	Models covered in this Manual.....	5
1.4	Explanation of Safety Warnings.....	5
1.5	Obtaining Instructions.....	6
	We appreciate your comments.....	6
<u>2</u>	<u>Description of the product</u>	<u>7</u>
2.1	Purpose of the Product.....	7
2.2	Process Overview.....	7
2.3	Technical Data.....	7
2.4	Operating Specifications for the Unit.....	7
2.5	Product elements	8
2.6	Warranty Statement	9
<u>3</u>	<u>Installation</u>	<u>10</u>
3.1	How to unpackage your FP025 Formalin Pumping Stations.....	10
3.2	Decommissioning and returning the Unit	10
3.3	How to Store the Product	10
<u>4</u>	<u>Quick Start Guide</u>	<u>10</u>
4.1	Startup.....	11
4.2	Powering down.....	11
<u>5</u>	<u>MAINTENANCE.....</u>	<u>12</u>
5.1	How to Maintain the Product	12
5.2	Stainless Steel Maintenance & Cleaning	12
5.3	MOPEC Service	13
5.4	Electrical Schematic.....	14
<u>6</u>	<u>TROUBLESHOOTING AND REPAIR.....</u>	<u>15</u>
6.1	How to Identify and Solve Problems.....	15
<u>7</u>	<u>Appendices</u>	<u>16</u>
<u>7.1</u>	<u>Spare parts and Consumables</u>	<u>16</u>

1 PREFACE

1.1 Description of use

The Mopec FP025 Mini Formalin pump is the ultimate portable pumping unit, built for conveniently transferring formalin from Mopec prefilled formalin cubes to a dispensing valve. The system is portable and powered by a standard 110v outlet for convenience and ease of use. Customers will find that it meets their needs for quick and convenient dispensing.

1.2 Notations Used in This Manual


- **Width (W)** refers to the left-to-right measurements of the unit.
- **Height (H)** refers to the vertical measurement from a tabletop service.
- **Depth (D)** refers to the measurement of the unit from front to back.
- **(REF)** references a section of the manual for more information.


1.3 Models covered in this Manual.


- FP025 Mopec FP025 Mini Formalin Pumping Station

1.4 Explanation of Safety Warnings

This manual employs the following symbols to call attention to warnings, cautions, and notices.

 **WARNING** Warning is used to indicate the presence of a hazard which CAN cause severe injury or death if ignored.

 **CAUTION** Caution is used to indicate the presence of a hazard which Will or CAN cause personal injury or property damage if the warning is ignored.

 **NOTICE** Notice is used to notify people of installation, operation, or maintenance information which is important but not hazard related.

1.5 Obtaining Instructions

Instructions are typically supplied digitally stored on a USB type flash drive that is zip tied to unit. At any time, the most current revision of this manual can be downloaded from the company website list in section 1.5

1.5.1 Internet

The latest version of the documentation is available at the following address: <https://MOPEC.com>

1.5.2 Ordering Documentation

Documentation, user instructions and technical information can be ordered by calling MOPEC at **(800)-362-8491**.

1.5.3 Documentation Feedback

If you are reading MOPEC product documentation on the internet, any comments can be submitted on the support website. Comments can also be sent to customerservice@mopec.com

We appreciate your comments.

2 Description of the product

2.1 Purpose of the Product

The Mopec FP025 Mini Formalin pumping station's purpose is to provide a way for laboratories to transfer and dispense formalin from prefilled formalin cubes to a dispensing valve. The dispensing valve makes it easy and convenient to fill small cups or containers for use during the grossing process.

2.2 Process Overview

The units comes standard with a 110v power cord and hoses to connect to a Mopec Prefilled Formalin Cube.

2.3 Technical Data

Mopec FP025 Mini Formalin transfer pumping station is designed, and manufactured under the guidelines of:

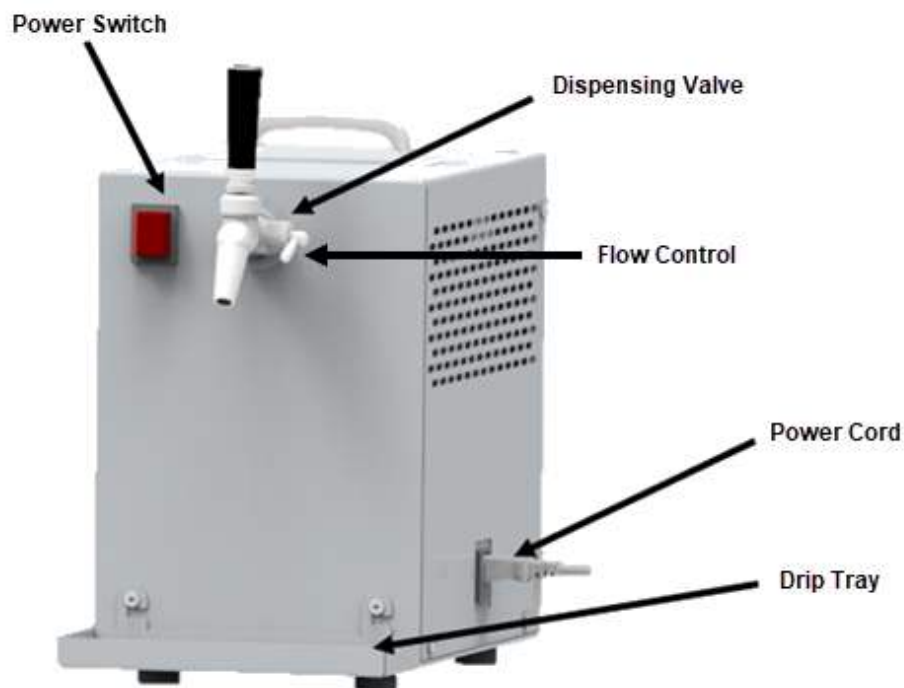
- **ISO 9001:2015 with Design** – MOPEC facility located at 800 Tech Row, Madison Heights, MI 48071

2.4 Operating Specifications for the Unit

- Temperature range: 70.0±10.0°F or 21.0±6.0°C
- Relative humidity range: RH 35%-75%
- Elevation Range: 0-2000m
- Domestic Electrical Specification: 115v/1ph/60hz
 - Full Load FLA= 0.54A
- IEC320 C13 Hospital-Grade Power Cord with three prongs UL Listed: 14AWG, 6' in length 15A @ 115vac
- Demand Pump: 1.4 gpm, built in 45psi internal bypass, 0.54amps at 60 psi, 115vac
- Unit weight: 23lbs (10.4kg)

2.5 Product elements

The Mopec FP025 Mini Formalin transfer pumping station is constructed as one assembly and has all the user features built into the exterior of the unit.



A. Power Switch

The Power Switch turns the unit on and off. When in the **ON** position it supplies power to the pump to allow it to build pressure in the system. The pump will run until the pump has achieved pressure in the system.

B. The Dispensing Valve

The dispensing valve allows for controlled flow of formalin to be dispensed from the tap. Pulling the tap handle at the top opens or closes the valve. The flow is adjusted by pushing and pulling the lever on the side of the valve.

C. Drip tray

The drip tray is sized to accept (2) Mopec Formaway, Formalin Neutralizing Absorbent Pads (BE092). Mopec's Formaway Formalin Neutralizing Absorbent Pad (F-NAP) were designed to reduce formaldehyde vapors by absorbing and neutralizing formalin. The drip tray is also removable for cleaning.

2.6 Warranty Statement

Products manufactured by MOPEC will be free from defects in material and workmanship and conform to MOPEC's description or specifications. If a warranty claim is made within one (1) year from the date of shipment or the date of installation (if installation is provided by MOPEC), the defective or nonconforming Product or Part thereof will be repaired or (at MOPEC's option) replaced free of charge, FCA MOPEC's dock. All warranty claims must be in writing and received by MOPEC within the warranty period. The warranty is not transferable (other than to customers of MOPEC's authorized Distributors), and will not apply unless the Equipment has been properly installed, maintained and operated in accordance with all instructions; and does not apply to defects, nonconformities, or other failure due to Equipment misuse, abuse, modifications, or other causes outside MOPEC's control. THERE ARE NO WARRANTIES WHICH EXTEND BEYOND THE DESCRIPTION ON THE FACE HEREOF. THE WARRANTY AS SET FORTH HEREIN IS IN LIEU OF ALL OTHER WARRANTIES, EXPRESS OR IMPLIED, INCLUDING ANY IMPLIED WARRANTY OF MERCHANTABILITY OR FITNESS FOR A PARTICULAR PURPOSE. To the extent that MOPEC is acting as a supplier of Products manufactured by a third party, the Products will be warranted only to the extent that they are warranted by their manufacturers and Buyer (or its customer) agrees to look solely to the Product manufacturer for all warranty claims. For shipments outside the United States or Canada, as to any defective or non-conforming part, the part will be replaced upon return of the part to MOPEC to perform any repair or to install any replacement part.

3 Installation

3.1 How to unpackage your FP025 Formalin Pumping Stations.

3.1.1 Unboxing Contents:

- Remove the packaging and look the unit over for hidden damage. If found, take photos, and contact Mopec.
- Take photographs of any damage and contact MOPEC or your private freight carrier if applicable.
-

3.1.2 Placing unit near work area:

- The unit can be wall mounted or placed onto a countertop.
- If placing onto a wall, copy the rear mounting hole locations and use wall anchors to support the unit.
- If placed on a tabletop surface, ensure the work area is clean and dry. There are non-marring feet on the unit to prevent sliding on smooth surfaces.
-

3.1.3 Formalin Hose Connection:

The unit comes supplied with a standard quick connect cubitainer fitting on the pickup line.

3.2 Decommissioning and returning the Unit

3.2.1 Decontaminate the unit.

- Decontaminate the equipment per your standard processes.
- Determine if drainage from the unit is classified as a biohazard. This will depend on your local ordinances.

3.3 How to Store the Product

3.3.1 Storage in place

- Remove the formalin hose and empty formalin liquid contents back into the supplying container.
- Disconnect power to the unit.
- Wipe WD40 on all stainless surfaces to protect from transfer rust.
- Cover unit for long term storage.

4 Quick Start Guide

4.1 Startup

The following section explains how to operate the FP025 Formalin Mini Pumping station and details of the operations.

4.1.1 Connecting the unit to the supplying 2.5/5 Gallon formalin cubitainer

- Ensure the main power switch is in the **OFF** position.
- Verify the dispense tap is in the closed position.
- Obtain a full 2.5/5 Gallon Mopec formalin Container.
- Thread adapter onto the formalin bag. This fitting is engineered to not leak when threaded on.
- Obtain the hose with quick disconnect and press the fittings together until connected.
- Turn the unit **ON**. The system is now ready for use. Pump will run until the system has been pressurized.
- Place container under dispense tap and pull tap to dispense. Flow output is adjusted with lever on the right side of the tap until desired flow has been met.

4.2 Powering down

4.2.1 Shut down

- It is recommended that the unit is turned **OFF** when not in use. Simply press the red switch to the off position.

5 MAINTENANCE

5.1 How to Maintain the Product

Minimal maintenance is required for the FP025. Simply keeping the unit clean and ensuring there are no leaks in the hoses or frayed wires will ensure optimal performance of the product.

5.2 Stainless Steel Maintenance & Cleaning

5.2.1 Disinfecting Stainless steel

- Always wipe in the direction of the stainless-steel grain.
 - We suggest using BE045 Path Cloud or BE047 Bench Wipe for cleaning purposes.
- Most disinfectants must be followed up with a water rinse to remove the salts that remain after these products dry. Always follow up a disinfection cleaning with a thorough rinse of water.
- DO NOT USE a straight bleach solution to clean your unit. Bleach will eventually erode stainless steel if not thoroughly rinsed.
 - Erosion from chlorine bleach is detectable and will void the warranty.
 - If your process must use chlorine bleach it must not exceed 10% and must be rinsed immediately after disinfection to avoid damage to the metal.

5.2.2 Stainless Care and Maintenance

To maintain your stainless-steel product, follow these steps:

- Rinse the surfaces with water frequently.
- Do not touch the surfaces with oily hands.
- Always use soft abrasive fine grit pads to clean grime in the direction of the metal grain.
- Once clean, condition your stainless surfaces with WD40 lubricant or Stainless steel polish.

5.2.3 Rust and Oxidation Formation

Rust can and will occur on stainless steel if it is not maintained properly. The most common cause of rust is from using a ferrous material on or near the unit. This is referred to as "transfer rust". Salts from cleaners or disinfectants can extract ferrous materials and deposit or transfer them to the stainless steel. Always rinse all disinfectants before they dry. Decal solutions and fumes are very aggressive and can deposit rust if not cleaned. Formalin use has not been shown to cause rust but it does contain salts and therefore can deposit rust.

There are a few ways to remove rust should you develop it.

- Vinegar – Pour White Vinegar on the rust and let it soak for 5 minutes. Scrub with a soft brush (like a toothbrush) Rinse with water and wipe dry.

-
- Lemon Juice & Baking Soda – Mix equal parts of each into a paste and spread over affected area. Let it set for 30 minutes before washing away with a damp sponge. Repeat as necessary.
 - Rust Remover – as a last resort try a chemical cleaner like Magica Rust Remover [Magica Rust Remover | Best Rust Removal Products](#), and follow instructions.

5.2.4 Scratch Repair

A surface scratch can be repaired using the following technique. Completely removing the scratch will depend on how severe it is.

- Use 120 grit emery cloth or paper and firm pressure to sand the scratch.
- Sanding must always go in the direction of the grain. Sand in a perfectly straight line, avoiding the natural tendency to sand in an arc. Sand the surface until the scratch is gone.
- Polish using a very fine grade of 3M scotch-brite pads. Use the same motions as with sanding. Polish the surface until the original finish is restored.

5.2.5 Fingerprints and solvent cleaning

The most common surface contaminates that occur from normal use are fingerprints and mild stains. These usually affect only appearance and do not have an effect on corrosion resistance. They can easily be removed by a variety of simple cleaning methods.

- Fingerprints can be removed with a common glass cleaner or by gently rubbing with a paste of soda ash (sodium carbonate) and water which would be applied with a soft cloth. It is best to follow with a warm water rinse.

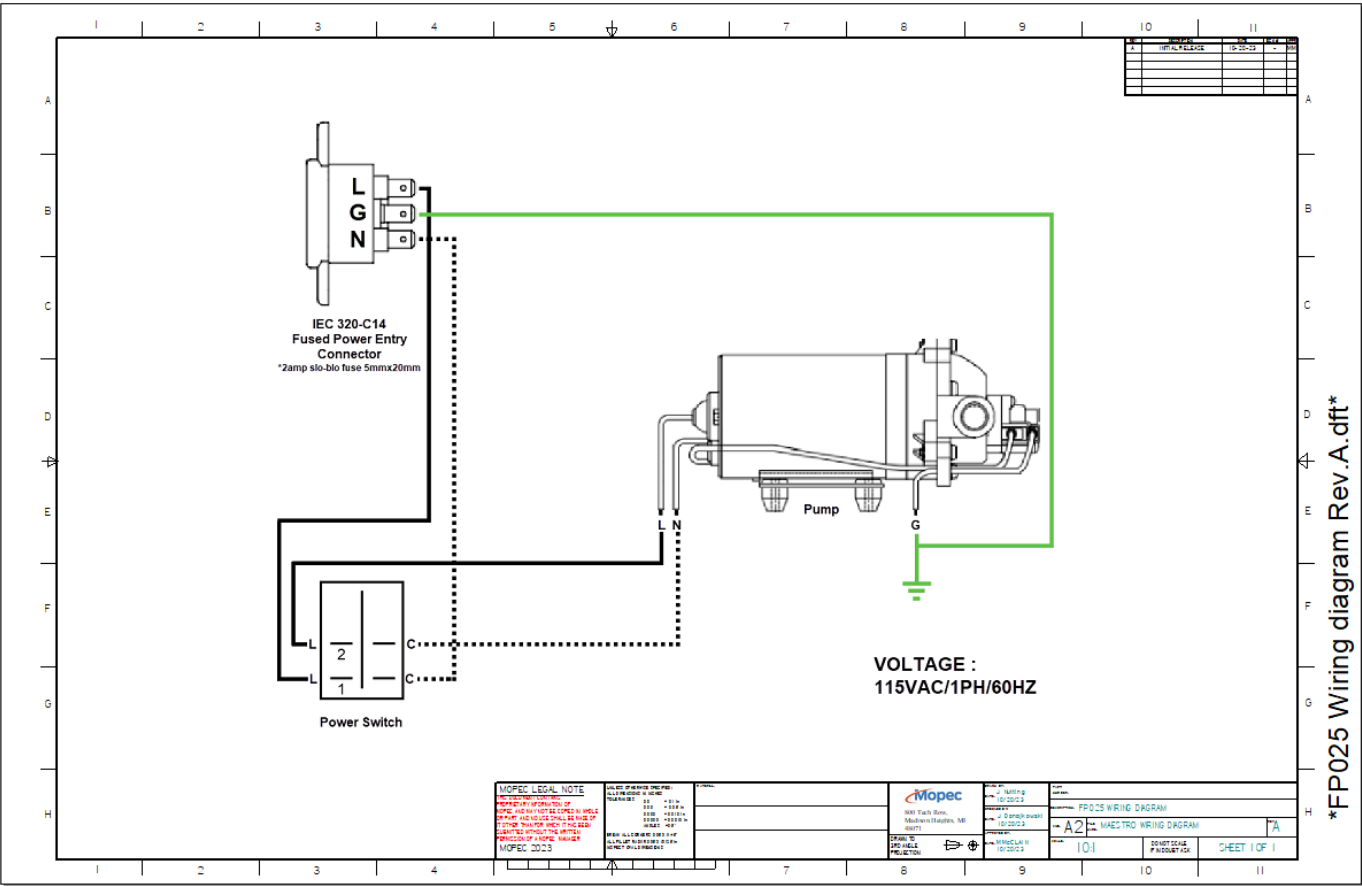
5.3 MOPEC Service

PLEASE have the following Information available BEFORE you call from your Trailer ID tag or original order or quote. Reference the ID tag which is located on the inside front wall of the trailer on the electrical box. of the trailer.

Product Model Number: *Example: FP025-1*
Product Serial Number: *Example FP025-1-140203-001*

Call 1-800-362-8491 and follow the prompts. Or email us at customerservice@mopec.com

5.4 Electrical Schematic



6 TROUBLESHOOTING AND REPAIR

6.1 How to Identify and Solve Problems

WARNING: Trouble shooting section is for reference only. Repairs are be made by licenced electrician or plumbing professional and shall follow proper facility safety protocols and a Lock out tag out Procedure.

Error / issue / Failure	Cause	Solution
Dispensing Formalin		
No formalin is dispensing	Dispensing and or flow control valve is closed	Open valve to the right of dispensing tap
	Formalin cubitainer you are dispensing from is empty	Turn unit off and replace empty container
	Facilities breaker is tripped	Check electrical wires, verify no electrical problems and reset facilities circuit breaker.
	Supply tube has come out of the formalin liquid	Move the tube to the bottom on the container so that fluid can be extracted.
Formalin Flow		
Too little or too much flow	Dispensing Valve and or flow control valve opened too much	Close valve to the right of dispensing tap
	Dispensing Valve opened too little	Open valve to the right of dispensing tap
Leak		
Unit has leak in the system	Damaged hose	Replace damaged hose
	Damaged Pump/Fitting	Replace pump/Fittings
	Leaking Dispense Spigot	Replace Dispense Spigot

7 Appendices

7.1 Spare parts and Consumables

Spare Parts

General Part Description	Mopec #	OEM #	Use(s)
3" x 4" Formalin Neutralizing Pads	BE092	N/A	Formalin Drip Tray
Screw 8-32 Truss ½" lg.	PB0039	McMaster 91770A194	Various
Plumbing Part Description	Mopec #	OEM #	Use(s)
Tubing (¾" Vinyl)	PP0045	McMaster 5233K71	Formalin dispensing
Tubing (½" Vinyl)	PP1062	MCMaster #5238K738	Formalin dispensing
UDC Valved In-Line Hose Barb Coupling Body - 1/2 ID Barb Buna-N O-Ring	PP0606	Colder 96400	Formalin dispensing
UDC 38mm Acetal Thread-On Bag Closure Without Thread Seal - Buna-N O-Ring	PP0607	Colder 97600	Formalin dispensing
Dispense Spigot	PP1048	Perlick 650SS	Formalin dispensing
Electrical Part Description	Mopec #	OEM #	Use(s)
Electric Pump	PP0529	DEPCO # 8005-733-155	Formalin Pump
On/Off Switch	PE0940	-	Power Switch
IEC Power Cord	PE0923	NEMA 5-15P TO IEC320 C13	Hospital Grade Cord