

Mopec

Autopsy Saws



MOPEC.COM/AUTOPSY-SAWS

Mopec 810 Autopsy Saw

The Mopec 810 Autopsy Saw has long been considered the most powerful and durable saw in anatomic pathology. Many practitioners prefer the slender handle, which gives them precise control. It has a powerful motor that produces 17,000 rpm and 32,000 oscillations per minute. High speed oscillating action quickly cuts through bone with minimal damage to soft tissue. Used for removing the cranial cap, making linear cuts or sectioning small bone specimens.



THE INDUSTRY STANDARD

Toughest & Longest Lasting

The Mopec 810 Autopsy Saw ranks as one of the toughest & long lasting autopsy saws ever made. Mopec Autopsy Saws are easy to handle and easy to clean. The cast aluminum housing will not warp with heat over time and prolonged use like other plastic housings.

Cleanability & Maintenance

The Mopec 810 has a lifetime lubrication system and no lubrication is required. Clean by wiping the external surfaces with a soft, lint-free cloth moistened with a non-abrasive, mild detergent and water. Wipe dry.

SAFE & SIMPLE TO OPERATE

Safety

Cutting action is achieved by high speed oscillation of the blade. The blade cuts on both the backward and forward strokes of the excursion. Soft tissue moves with the blade and is not cut by the blade; therefore, no blade guard is necessary to protect the operator.

Simplicity

Hold close to the saw blade with one hand, with the index finger extending under the oscillating head for counterbalance. For more efficient cutting, the blade can be moved slightly up and down as the cut progresses.

PRECISION CUTTING

Powerful Motor

The Mopec 810's powerful motor produces 17,000 rpm which causes the blades to swing at 32,000 oscillations per minute. The blade swings approximately 1/8" back and forth. The hard material is cut as it resists the movement, while soft tissue moves easily with the blade.

Unmatched Blades

Mopec blades are known as the highest quality blades available. Mopec's affordable autopsy saw blades are hardened for increased longevity and sharpness.

Mopec Swordfish Autopsy Saw

Previously known as the Mopec 5000, the Mopec Swordfish Submersible Autopsy Saw is the first bone saw developed specifically for autopsy use. Designed with the user in mind, this cutting-edge tool is equipped with state-of-the-art risk prevention features and is available exclusively from Mopec.

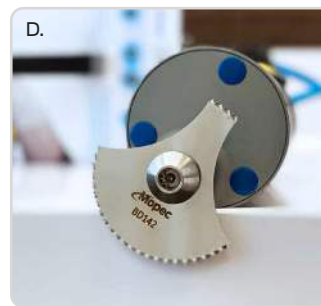


A. The revolutionary ergonomic design of the Mopec Swordfish Autopsy Saw creates a more natural grip pattern with better weight distribution than standard autopsy saws.

B. Non-slip grip portable base or mountable base that can be built into autopsy table

C. Submersible for up to 15 minutes, the Mopec Swordfish Autopsy Saw is able to be thoroughly cleaned and maintained without fear of shock or damage.

D. A newly designed head of the Mopec Swordfish ensures simple blade changing, allowing a quick switch between the four blade options.



PREMIUM FEATURES

Submersible Handpiece

Unlike other saws, the Mopec Swordfish is hermetically sealed to prevent shock from liquid contact. The entire handpiece is submersible to ensure effective cleaning. The sealed construction also reduces the risk of specimen inhalation caused by debris atomization from motor contact.

Lower Voltage

The handpiece is a mere 40 volts, thus lowering the chance for injury should the cord be mistakenly cut. Despite the lower voltage, the cutting power of the unit remains top-grade. Lower voltage means reduced heat: a cooler touch for the user and less wear on the motor.

IMPROVED DESIGN

Weight Distribution

To prevent fatigue during repeated use, the saw is designed to balance weight between the front and back of the unit. This even distribution minimizes hand and wrist strain.

Quieter Operation

The sturdy construction houses a quieter motor to reduce noise distraction and saw vibration during autopsies.

Unique Arbor Mount

Saw blades can be easily changed via the top-mounted arbor to reduce the risk of injuries that can occur with radial mount blades.

NOTABLE VALUE

Updated Design

The Mopec Swordfish was recently updated to include a thicker, heavy-duty power cord and a strengthened blade clamp.

Easy Usage

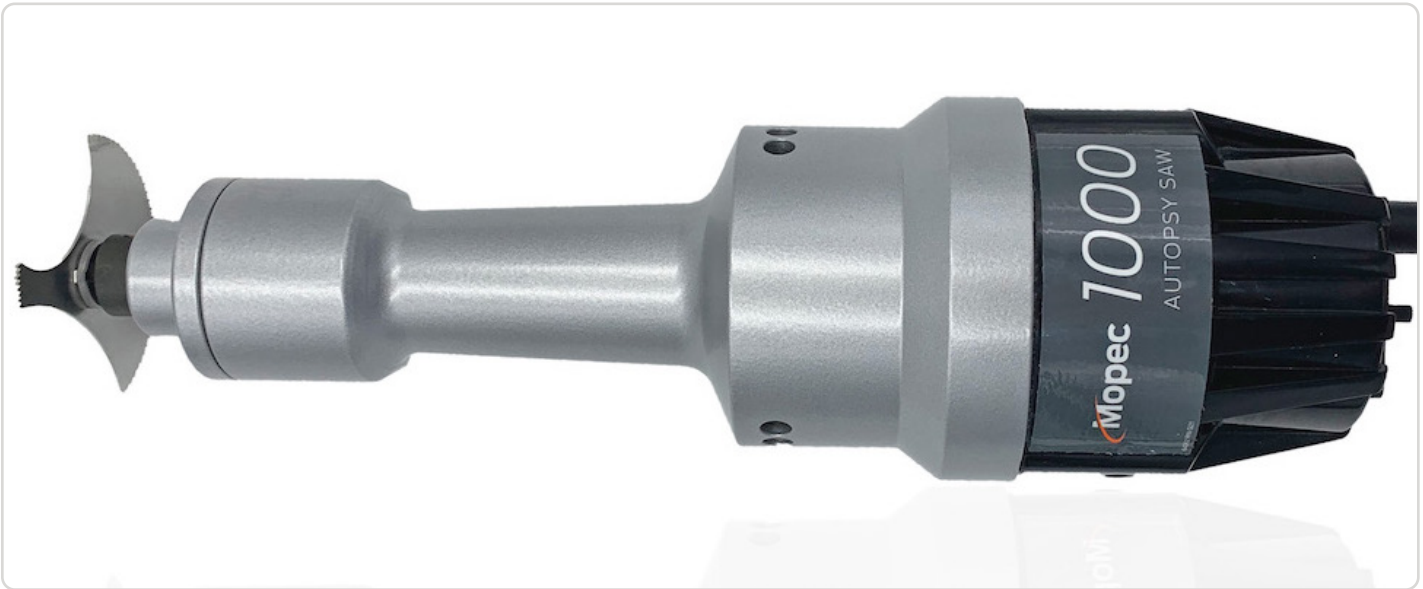
The hermetically sealed, one button operation allows for complete ease of access and control for the user.

10% Thicker Blades

Four premium chrome-plated blades are available. Previously made from carbon steel, these 10% thicker blades cut more aggressively than ever before for quicker work and longer blade life.

Mopec 1000 Autopsy Saw

The Mopec 1000 Autopsy Saw has a rugged construction and a machined aluminum housing that reduces heat and noise. The On/Off switch is designed and placed so that it will not break if dropped. Designed for removing the cranial cap, making linear cuts, or sectioning small bone specimens. The Mopec 1000 Autopsy Saw is the trusted solution to those who are looking for an economical alternative to a Mopec 810 Autopsy Saw.



THE ECONOMICAL OPTION

Rugged Construction

The Mopec 1000 Saw is specifically designed to be the trusted economical version of the Mopec 810 Saw. The 10 foot electrical cord features a hospital grade plug and allows for easy movement throughout the autopsy suite.

Built to Last

Speciality features include a conveniently located on/off switch that is designed and placed to not break if the instrument is dropped. Special lubrication guarantees a long life.

OPTIMAL PERFORMANCE

Simple & Powerful

The sturdy construction creates high speed oscillations at 28,000 CPM. The steady blade cuts are optimal for removing the cranial cap, making linear cuts, or sectioning small bone specimens.

Quiet Operation

The rugged construction features machined aluminum housing to reduce heat and noise, as well as a weighted bottom design for counterbalance.

NOTABLE ACCESSORIES

Strongest Blades

Mopec blades are known as the highest quality blades available. Mopec's affordable autopsy saw blades are hardened for increased longevity and sharpness. Available in standard and supercut options.

Safety From Bone Dust

The Mopec 1000 Autopsy Saw is compatible with the BDo80 standing bone dust vacuum and the BDo50 portable bone dust vacuum. Using a vacuum dramatically reduces bone dust inhalation and keeps your employees safe.

Mopec Autopsy Saw Bone Dust Vacuums

Mopec Portable Bone Dust Vacuum

Designed to fit the Mopec 810 and Mopec 1000 Autopsy Saws, the Mopec Portable Bone Dust Vacuum features a lightweight construction and convenient handle that provides easy mobility for the user.

- Includes a disposable HEPA filter for quick and easy replacement
- Self-contained unit conveniently stores replacement blades
- 115V 60Hz with US plug
- 10' power cord
- NOTE: Mopec 810 and Mopec 1000 Autopsy Saws sold separately



Mopec Standard Bone Dust Vacuum

Designed to fit the Mopec 810 and Mopec 1000 Autopsy Saws, the Mopec Bone Dust Vacuum/Collector provides HEPA filtration to minimize exposure to fine particulate matter. The bone dust vacuum collector attaches directly to the autopsy saw for safety and efficiency.

- HEPA Vacuum includes HEPA Filter, Vacuum Hose (102") & Y Bracket
- 115V 60Hz with US plug
- Reduced noise level
- Easily replaced disposable filter cartridge
- 10' power cord
- One year warranty
- NOTE: Mopec 810 and Mopec 1000 Autopsy Saws sold separately

Mopec Swordfish Bone Dust Vacuum

Compatible with the Mopec Swordfish Autopsy Saw, the Swordfish Bone Dust Vacuum/Collector is used to extract harmful debris and matter from the air while using the Mopec Swordfish Autopsy Saw. The flexible, clear plastic hood improves visibility and can fit over all Swordfish autopsy saw blades.

- Compact and portable
- 4 large casters all with brakes
- Hand piece storage unit
- 3 Stage filtration (including HEPA)
- Easy access to filters
- IP44 water resistance
- Bag capacity 1.84 US gallons (7 liters)
- Top mounted lead for easy removal
- Air volume 90 liters/sec.
- Available in 110V and 220V versions
- NOTE: Mopec Swordfish Autopsy Saw sold separately



Mopec Autopsy Saw Blades

Mopec's affordable autopsy saw blades are hardened for increased longevity and sharpness, earning their title as the highest quality blades available on the market. Our unmatched selection of autopsy saw blades provides you with the options you need for any dissection.

Standard Autopsy Saw Blades

Stainless steel autopsy saw blades are hardened to prolong life and sharpness. Mopec's wide selection of stainless steel autopsy blades come with or without arbor and combine the highest quality with an affordable price.

Part ID	Description	Optional Arbor
BD101	Large Section Blade	With Arbor
BD104	Round Blade	With Arbor
BD105	Spinal Column Blade	With Arbor
BD108	Small Section Blade	With Arbor

*Please contact a Mopec representative for arborless blades.



SuperCut Autopsy Saw Blades

Made of the finest tempered stainless steel and coated with an extraordinary "Gold" Titanium Nitride hardening veneer, SuperCut bone cutting blades offer a longer and sharper life than standard autopsy saw blades. Extra sharp teeth provide a clean, precise cut every time.

Part ID	Description	Optional Arbor
BD113	Section Blade	With Arbor
BD114	Round Blade	With Arbor

*Please contact a Mopec representative for arborless blades.



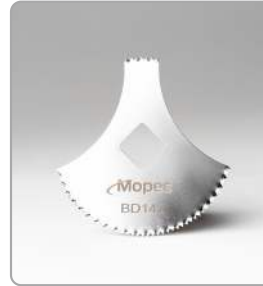
Standard and SuperCut Autopsy Saw Blades are Compatible with Mopec 810, Mopec 1000 and Stryker 810 Saws



Swordfish Autopsy Saw Blades

We've upgraded our Mopec Swordfish saw blades! These new and improved blades are now 10% thicker and made from Stainless Steel instead of Chrome-Plated Carbon Steel!

Part ID	Description	Optional Arbor
BD140	Spinal Column Blade	Without Arbor
BD141	Round Blade	Without Arbor
BD142	Section Blade	Without Arbor
BD143	Large Round Blade	Without Arbor



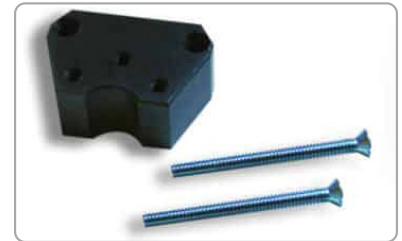
Compatible with Mopec Swordfish Saw



Mopec Autopsy Saw Accessories

Mopec 810 and Mopec 1000 Accessories

Part ID	Description	Product Compatibility
BD106	Saw Blade Arbor	BD810, BD040
BD107	Arbor Wrench, 0.5"	BD810, BD040
BD021	Saw Attachment Y Bracket	BD810, BD040
BD022	Vacuum Adapter for BD810	BD810



Mopec Portable and Standard Vacuum Accessories

Part ID	Description	Product Compatibility
BD020	Saw Mount Bracket Kit	BD050, BD080
BD028	Quietcut Vacuum Hose	BD080
BD051	BD050 HEPA Vacuum Filter	BD050
BD053	BD080 HEPA Vacuum Filter	BD080



Mopec Swordfish Saw and Vacuum Accessories

Part ID	Description	Product Compatibility
BD097	Vacuum Filter Kit	BD093, BD095
BD145	64mm Depth Gauge	BD090, BD094
BD146	76mm Depth Gauge	BD090, BD094
BD147	Vacuum Hood, 10 Pack	BD093, BD095
BD148	Quick Release Vacuum Hose	BD093, BD095
BD149	Paper Filters, Pack of 50	BD093, BD095



Mopec Autopsy Saws



MOPEC 1000

Best Seller

The Mopec 1000 Autopsy Saw is a trusted solution to those who are looking for an economical alternative to a Stryker 810 Autopsy Saw or Mopec 810 Autopsy Saw.

This Mopec Autopsy Saw has a rugged construction and a machined aluminum housing that reduces heat and noise. On/Off switch is designed and placed so that it will not break if dropped.



MOPEC SWORDFISH

Fully Submersible

Previously known as the Mopec 5000, the Mopec Swordfish is the first bone saw developed specifically for autopsy use.

It is totally submersible for complete cleaning. The hand-piece runs on 40V for a cooler touch, reduced vibration; and the axial mount blades offer safer installation. Your lab and your employees will benefit from this safer, more hygienic autopsy saw.



MOPEC 810

Most Powerful & Durable

The Mopec 810 Autopsy Saw remains as the industry standard in anatomic & forensic pathology.

The Mopec 810 Autopsy Saw has long been considered the most powerful and durable saw available. Many practitioners prefer the slender handle, which gives them precise control. High speed oscillation cuts through bone with minimal damage to soft tissue.