

Mopec *PathCam*

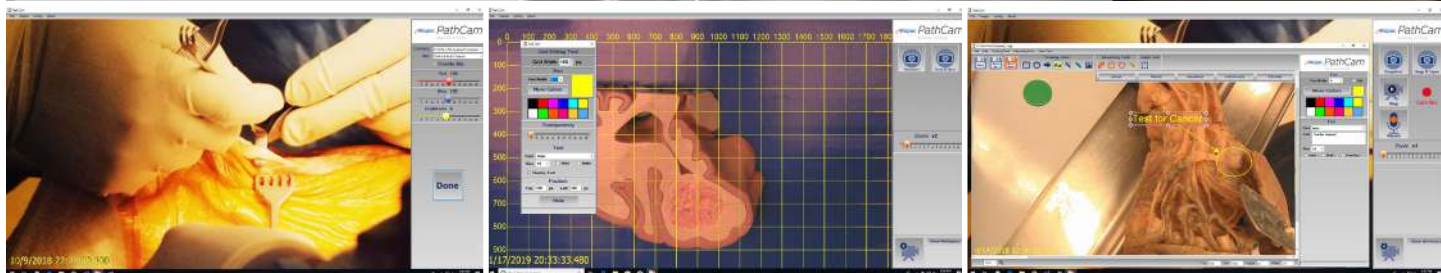
IMAGING SYSTEM



CUSTOMIZABLE STATE OF THE ART TECHNOLOGY TO CAPTURE, MEASURE, ANNOTATE, SHARE, AND SAVE HIGH QUALITY GROSS SPECIMEN IMAGES

PathCam Integrated Baseline Packages

The Mopec PathCam Imaging System provides everything you need to add image capturing to your grossing process without disrupting your workflow. Mopec PathCam comes with three baseline software packages to choose from, the ability to integrate with most existing hardware, and a variety of available add-ons.



BASIC

Included Hardware

PathCam with cables, mounted in hood and/or retractable

Conversion Box: to send camera signal to computer and monitor

PathCam Software Features

Controls: on/off, zoom, brightness, color management, and date & time labeling

Stream video, capture snapshots, and archive snapshots as JPEG files

Barcode reader compatible

INTERMEDIATE

Included Hardware

PathCam with cables, mounted in hood and/or retractable

Conversion Box: to send camera signal to computer and monitor

PathCam Software Features

All Basic Features

Add graphic notations and measure distances/area in snapshots

Grid Tool: size biopsies and map structure location

ADVANCED

Included Hardware

PathCam with cables, mounted in hood and/or retractable

Conversion Box: to send camera signal to computer and monitor

PathCam Software Features

All Basic & Intermediate Features

Record voice narration independent of video and archive as WAV files

Record voice narration with video and archive as AVI files

ADD-ON OPTIONS

Available for Purchase

- Washable keyboard and mouse
- 21" 4K Touch screen monitor
- 65" 4K Ultra-DTM (Glasses-FREE 3D) monitor
- Retractable with PathCam control on handle
- Foot pedal PathCam control
- Voice command PathCam control and headset
- PC with Windows 10: 1 on-board USB3, 7 USB2, 1 HDMI, and 1 VGA port (required for operation)

