

PathCam

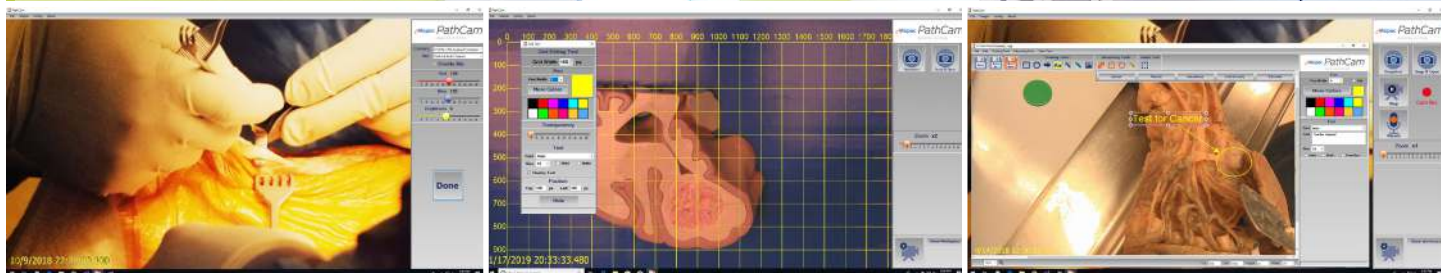
IMAGING SYSTEM



THE MOPEC PATHCAM FOR AUTOPSY & ANATOMY WITH STEREOSCOPIC VIEWING
MAKES CREATING PROFESSIONAL AND LEGAL-QUALITY IMAGES EASY & SECURE

PathCam Integrated Baseline Packages

The Mopec PathCam Imaging System for Autopsy & Anatomy Labs to get full-body and close-up shots, from nearly any angle without disrupting your workflow. Mopec PathCam comes with three baseline software packages to choose from, the ability to integrate with most existing hardware, and a variety of available add-ons.



BASIC

Included Hardware

PathCam with cables, mounted in hood and/or retractable

Conversion Box: to send camera signal to computer and monitor

PathCam Software Features

Controls: on/off, zoom, brightness, color management, and date & time labeling

Stream video, capture snapshots, and archive snapshots as JPEG files

Barcode reader compatible

INTERMEDIATE

Included Hardware

PathCam with cables, mounted in hood and/or retractable

Conversion Box: to send camera signal to computer and monitor

PathCam Software Features

All Basic Features

Add graphic notations and measure distances/area in snapshots

Grid Tool: size biopsies and map structure location

ADVANCED

Included Hardware

PathCam with cables, mounted in hood and/or retractable

Conversion Box: to send camera signal to computer and monitor

PathCam Software Features

All Basic & Intermediate Features

Record voice narration independent of video and archive as WAV files

Record voice narration with video and archive as AVI files

ADD-ON OPTIONS

Available for Purchase

- Washable keyboard and mouse
- 21" 4K Touch screen monitor
- 65" 4K Ultra-DTM (Glasses-FREE 3D) monitor
- Retractable with PathCam control on handle
- Foot pedal PathCam control
- Voice command PathCam control and headset
- PC with Windows 10: 1 on-board USB3, 7 USB2, 1 HDMI, and 1 VGA port (required for operation)

