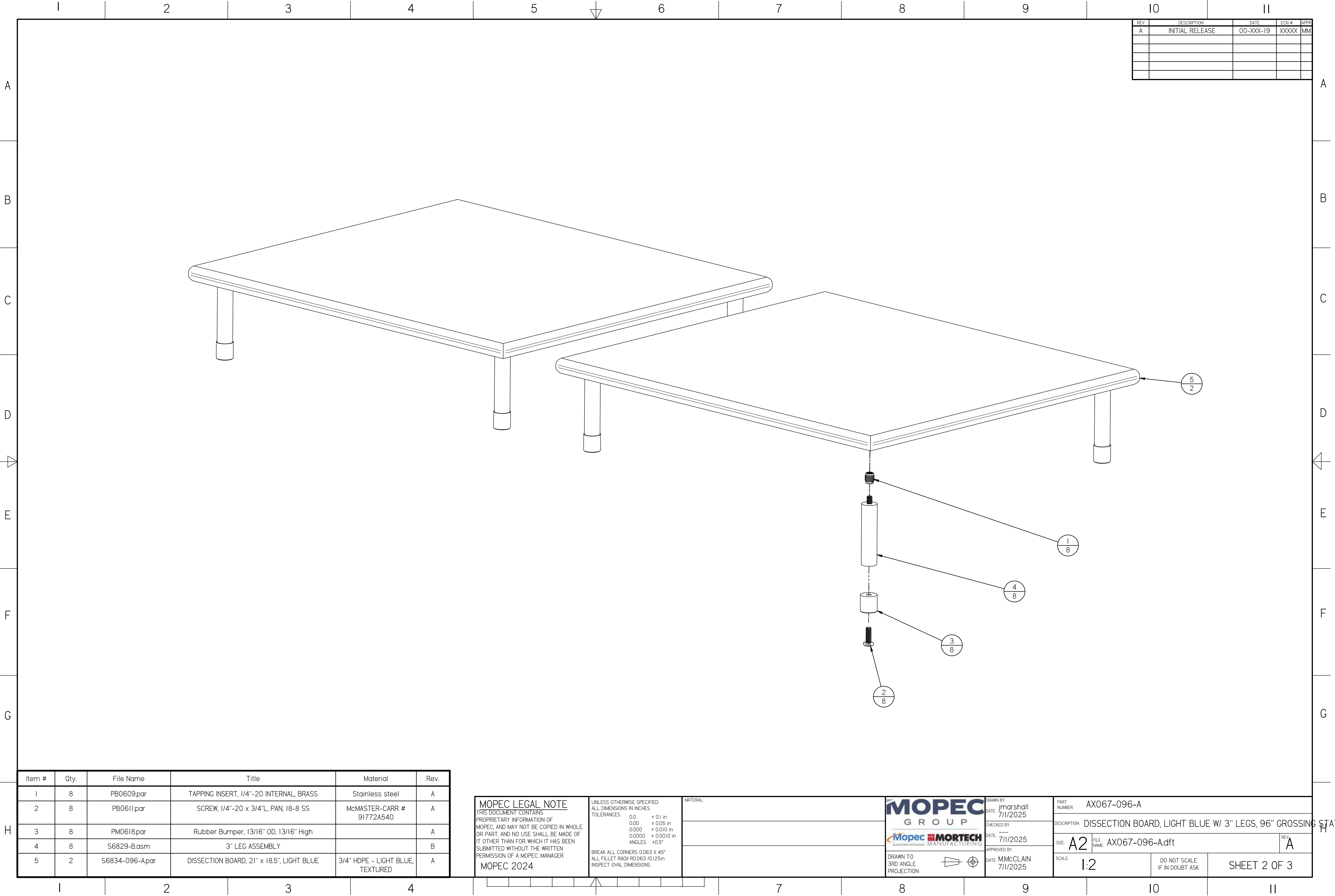


AX067-096-A.dft



REV	DESCRIPTION	DATE	ECN #	APPR
A	INITIAL RELEASE	00-XXX-19	XXXXX	MM

Item #	Qty.	File Name	Title	Material	Rev.
1	8	PB0609.par	TAPPING INSERT, 1/4"-20 INTERNAL, BRASS	Stainless steel	A
2	8	PB0611.par	SCREW, 1/4"-20 x 3/4"L, PAN, 18-8 SS	McMASTER-CARR # 91772A540	A
3	8	PM0618.par	Rubber Bumper, 13/16" OD, 13/16" High		A
4	8	S6829-B.asm	3" LEG ASSEMBLY		B
5	2	S6834-096-A.par	DISSECTION BOARD, 21" x 18.5", LIGHT BLUE	3/4" HDPE - LIGHT BLUE, TEXTURED	A

<div>MOPEC LEGAL NOTE</div> <div>THIS DOCUMENT CONTAINS PROPRIETARY INFORMATION OF MOPEC, AND MAY NOT BE COPIED IN WHOLE OR PART, AND NO USE SHALL BE MADE OF IT OTHER THAN FOR WHICH IT HAS BEEN SUBMITTED WITHOUT THE WRITTEN PERMISSION OF A MOPEC MANAGER</div> <div>MOPEC 2024</div>	<div>UNLESS OTHERWISE SPECIFIED: ALL DIMENSIONS IN INCHES TOLERANCES</div> <div><div>0.0 ± 0.1 in</div><div>0.00 ± 0.05 in</div><div>0.000 ± 0.010 in</div><div>0.0000 ± 0.0010 in</div><div>ANGLES ±0.5°</div></div> <div><div>BREAK ALL CORNERS 0.063 X 45°</div><div>ALL FILLET RADII R0.063 /0.125in</div><div>INSPECT OVAL DIMENSIONS</div></div>	<div>MATERIAL</div> <div></div> <div></div> <div></div>	<div><div>MOPEC GROUP</div><div><div>Mopec</div><div>MORTECH</div><div>Advanced Technology MANUFACTURING</div></div></div> <div><div>DRAWN TO 3RD ANGLE PROJECTION</div><div></div></div>	<div>DRAWN BY: jmarshall</div> <div>DATE: 7/11/2025</div>	<div>PART NUMBER: AX067-096-A</div>		
				<div>CHECKED BY:</div> <div>DATE: 7/11/2025</div>	<div>DESCRIPTION: DISSECTION BOARD, LIGHT BLUE W/ 3" LEGS, 96" GROSSING</div>		
				<div>APPROVED BY:</div> <div>DATE: MMcCLAIN 7/11/2025</div>	<div>SIZE: A2</div>	<div>FILE NAME: AX067-096-A.dft</div>	<div>REV: A</div>
				<div>SCALE: 1:2</div>		<div>DO NOT SCALE IF IN DOUBT ASK</div>	<div>SHEET 2 OF 3</div>

AX067-096-A.dft

