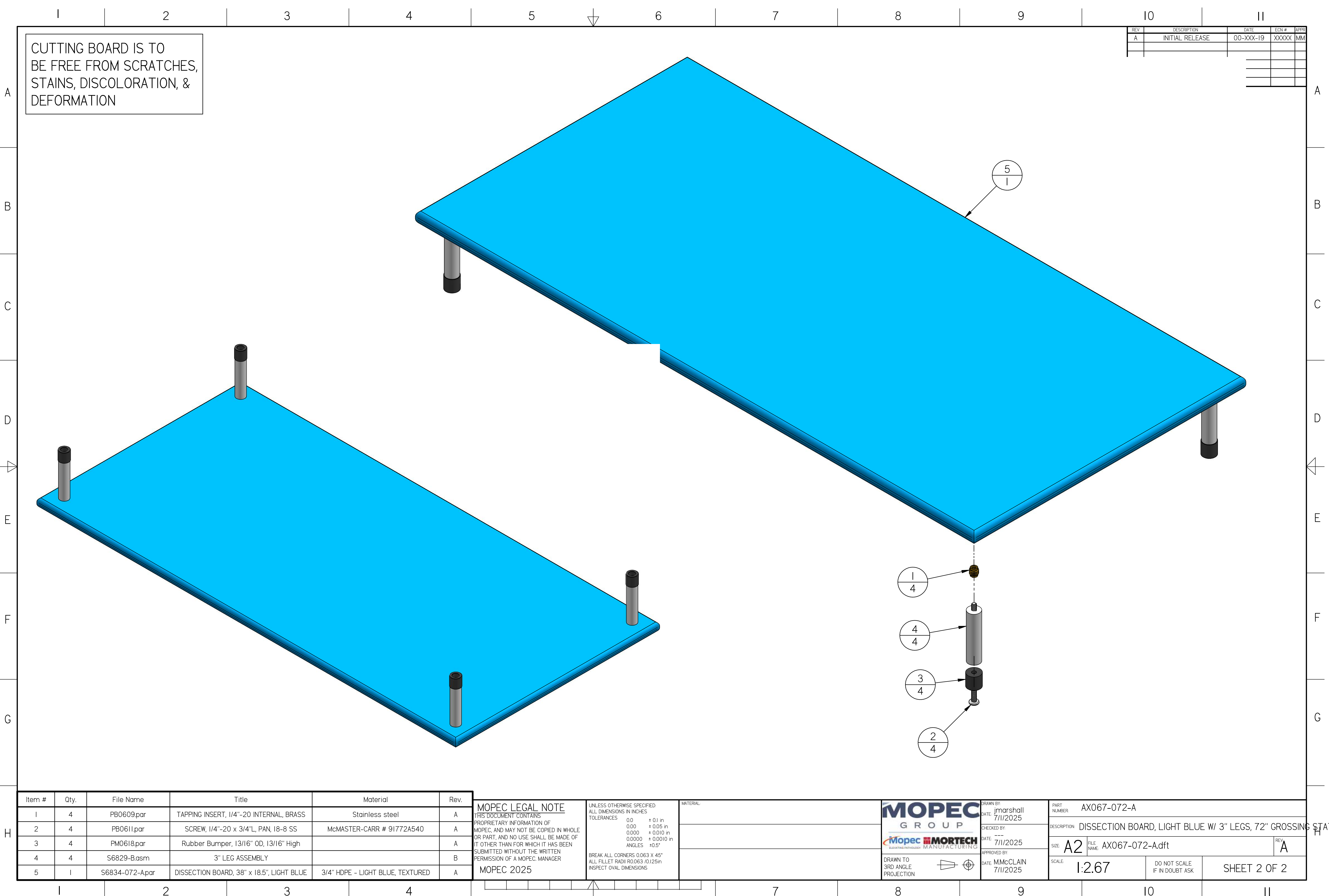


\*AX067-072-A.dft\*



REV	DESCRIPTION	DATE	ECN #	APPR
A	INITIAL RELEASE	00-XXX-19	XXXXX	MM

Item #	Qty.	File Name	Title	Material	Rev.
1	4	PB0609.par	TAPPING INSERT, 1/4"-20 INTERNAL, BRASS	Stainless steel	A
2	4	PB0611.par	SCREW, 1/4"-20 x 3/4"L, PAN, 18-8 SS	McMASTER-CARR # 91772A540	A
3	4	PM0618.par	Rubber Bumper, 13/16" OD, 13/16" High		A
4	4	S6829-B.asm	3" LEG ASSEMBLY		B
5	1	S6834-072-A.par	DISSECTION BOARD, 38" x 18.5", LIGHT BLUE	3/4" HDPE - LIGHT BLUE, TEXTURED	A

**MOPEC LEGAL NOTE**  
THIS DOCUMENT CONTAINS  
PROPRIETARY INFORMATION OF  
MOPEC, AND MAY NOT BE COPIED IN WHOLE  
OR PART, AND NO USE SHALL BE MADE OF  
IT OTHER THAN FOR WHICH IT HAS BEEN  
SUBMITTED WITHOUT THE WRITTEN  
PERMISSION OF A MOPEC MANAGER  
MOPEC 2025

UNLESS OTHERWISE SPECIFIED:  
ALL DIMENSIONS IN INCHES  
TOLERANCES  
0.0 ± 0.1 in  
0.00 ± 0.05 in  
0.000 ± 0.010 in  
0.0000 ± 0.0010 in  
ANGLES ±0.5°  
BREAK ALL CORNERS 0.063 X 45°  
ALL FILLET RADII R0.063 /0.125in  
INSPECT OVAL DIMENSIONS

MATERIAL



DRAWN BY: jmarshall  
DATE: 7/11/2025  
CHECKED BY:  
DATE: 7/11/2025  
APPROVED BY: MMcCLAIN  
DATE: 7/11/2025

PART NUMBER	AX067-072-A		
DESCRIPTION	DISSECTION BOARD, LIGHT BLUE W/ 3" LEGS, 72" GROSSING STATION		
SIZE	A2	FILE NAME	AX067-072-A.dft
SCALE	1:2.67	DO NOT SCALE IF IN DOUBT ASK	SHEET 2 OF 2

\*AX067-072-A.dft\*