

REV	DESCRIPTION	DATE	ECN #	APPR
A	INITIAL RELEASE	00-XXX-19	XXXXX	MM

Item #	Qty.	File Name	Title	Material	Rev.
1	8	PB0609.par	TAPPING INSERT, 1/4"-20 INTERNAL, BRASS	Stainless steel	A
2	2	S6834-096-A.par	DISSECTION BOARD, 21" x 18.5", LIGHT BLUE	3/4" HDPE - LIGHT BLUE, TEXTURED	A

MOPEC LEGAL NOTE
THIS DOCUMENT CONTAINS
PROPRIETARY INFORMATION OF
MOPEC, AND MAY NOT BE COPIED IN WHOLE
OR PART, AND NO USE SHALL BE MADE OF
IT OTHER THAN FOR WHICH IT HAS BEEN
SUBMITTED WITHOUT THE WRITTEN
PERMISSION OF A MOPEC MANAGER
MOPEC 2025

UNLESS OTHERWISE SPECIFIED:
ALL DIMENSIONS IN INCHES
TOLERANCES
0.0 ± 0.1 in
0.00 ± 0.05 in
0.000 ± 0.010 in
0.0000 ± 0.0010 in
ANGLES ±0.5°
BREAK ALL CORNERS 0.063 X 45°
ALL FILLET RADII R0.063 /0.125in
INSPECT OVAL DIMENSIONS

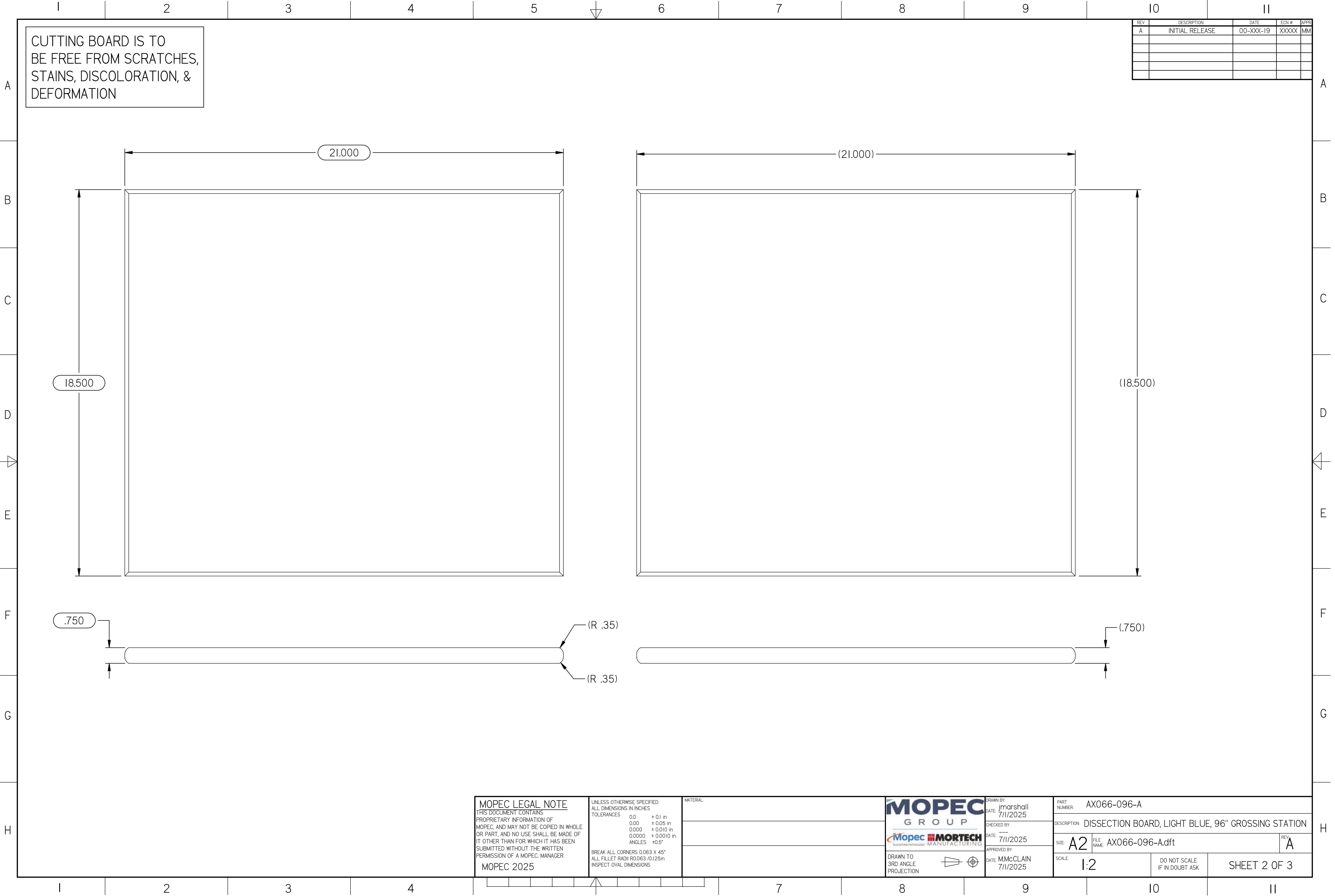
MATERIAL



DRAWN BY: jmarshall
DATE: 7/11/2025
CHECKED BY:
DATE: ---
7/11/2025
APPROVED BY:
DATE: M.McCLAIN
7/11/2025

PART NUMBER	AX066-096-A		
DESCRIPTION	DISSECTION BOARD, LIGHT BLUE, 96" GROSSING STATION		
SIZE	A2	FILE NAME	AX066-096-A.dft
SCALE	1:2	DO NOT SCALE IF IN DOUBT ASK	SHEET 1 OF 3

AX066-096-A.dft



AX066-096-A.dft

