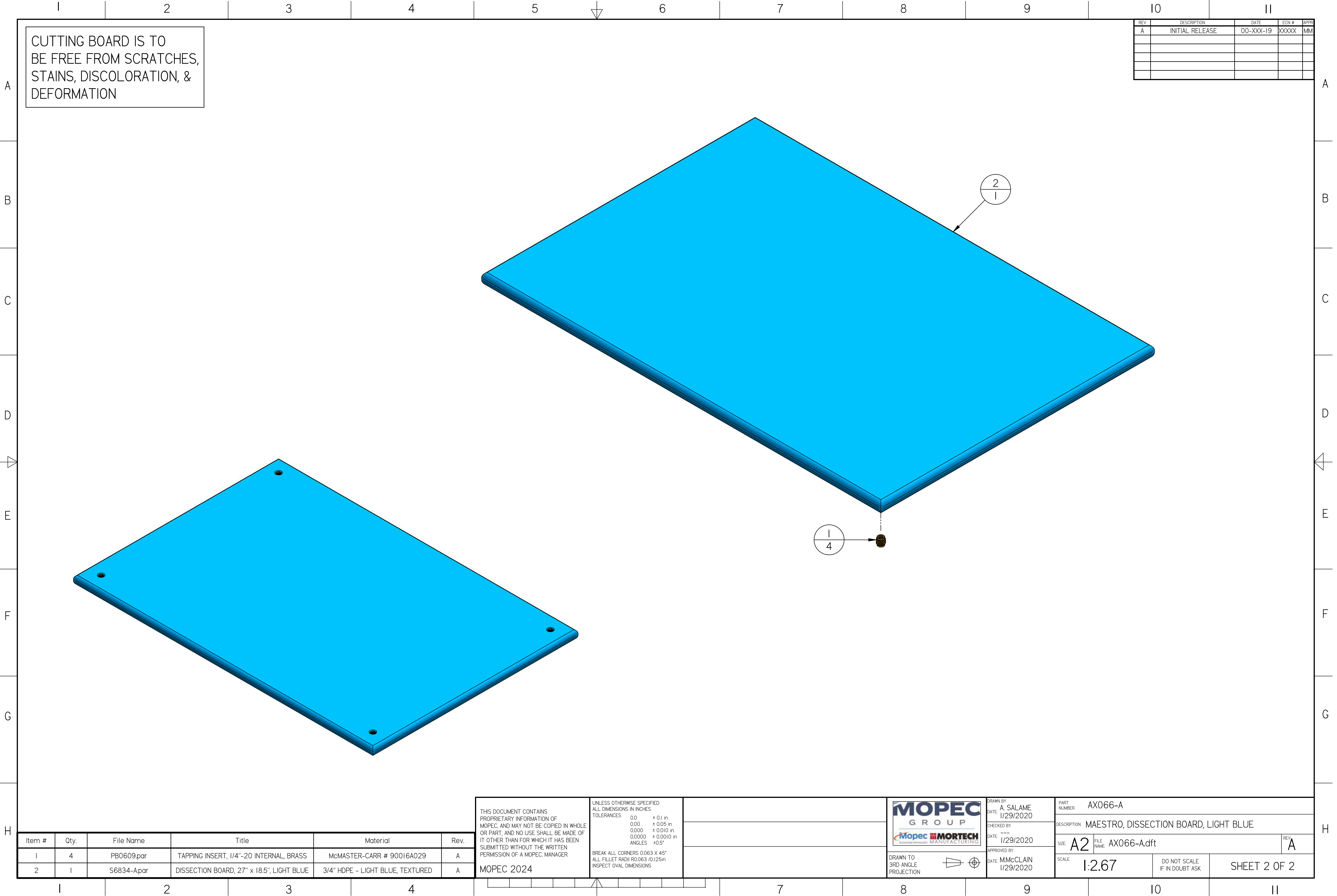


AX066-A.dft



REV	DESCRIPTION	DATE	ECN #	APPR
A	INITIAL RELEASE	00-XXX-19	XXXXX	MM

Item #	Qty.	File Name	Title	Material	Rev.
1	4	PB0609.par	TAPPING INSERT, 1/4"-20 INTERNAL, BRASS	McMASTER-CARR # 90016A029	A
2	1	S6834-A.par	DISSECTION BOARD, 27" x 18.5", LIGHT BLUE	3/4" HDPE - LIGHT BLUE, TEXTURED	A


THIS DOCUMENT CONTAINS PROPRIETARY INFORMATION OF MOPEC, AND MAY NOT BE COPIED IN WHOLE OR PART, AND NO USE SHALL BE MADE OF IT OTHER THAN FOR WHICH IT HAS BEEN SUBMITTED WITHOUT THE WRITTEN PERMISSION OF A MOPEC. MANAGER

MOPEC 2024

UNLESS OTHERWISE SPECIFIED:
ALL DIMENSIONS IN INCHES

TOLERANCES	0.0	± 0.1 in
	0.00	± 0.05 in
	0.000	± 0.010 in
	0.0000	± 0.0010 in
	ANGLES	± 0.5°

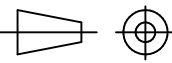
BREAK ALL CORNERS 0.063 X 45°
ALL FILLET RADII R0.063 /0.125in
INSPECT OVAL DIMENSIONS



MOPEC GROUP

subcontractor MANUFACTURING

DRAWN TO 3RD ANGLE PROJECTION



DRAWN BY: A. SALAME
DATE: 1/29/2020

CHECKED BY:
DATE: 1/29/2020

APPROVED BY:
DATE: M.McCLAIN 1/29/2020

PART NUMBER: AX066-A

DESCRIPTION: MAESTRO, DISSECTION BOARD, LIGHT BLUE

SIZE: A2	FILE NAME: AX066-A.dft	REV: A
----------	------------------------	--------

SCALE: 1:2.67	DO NOT SCALE IF IN DOUBT ASK	SHEET 2 OF 2
---------------	------------------------------	--------------