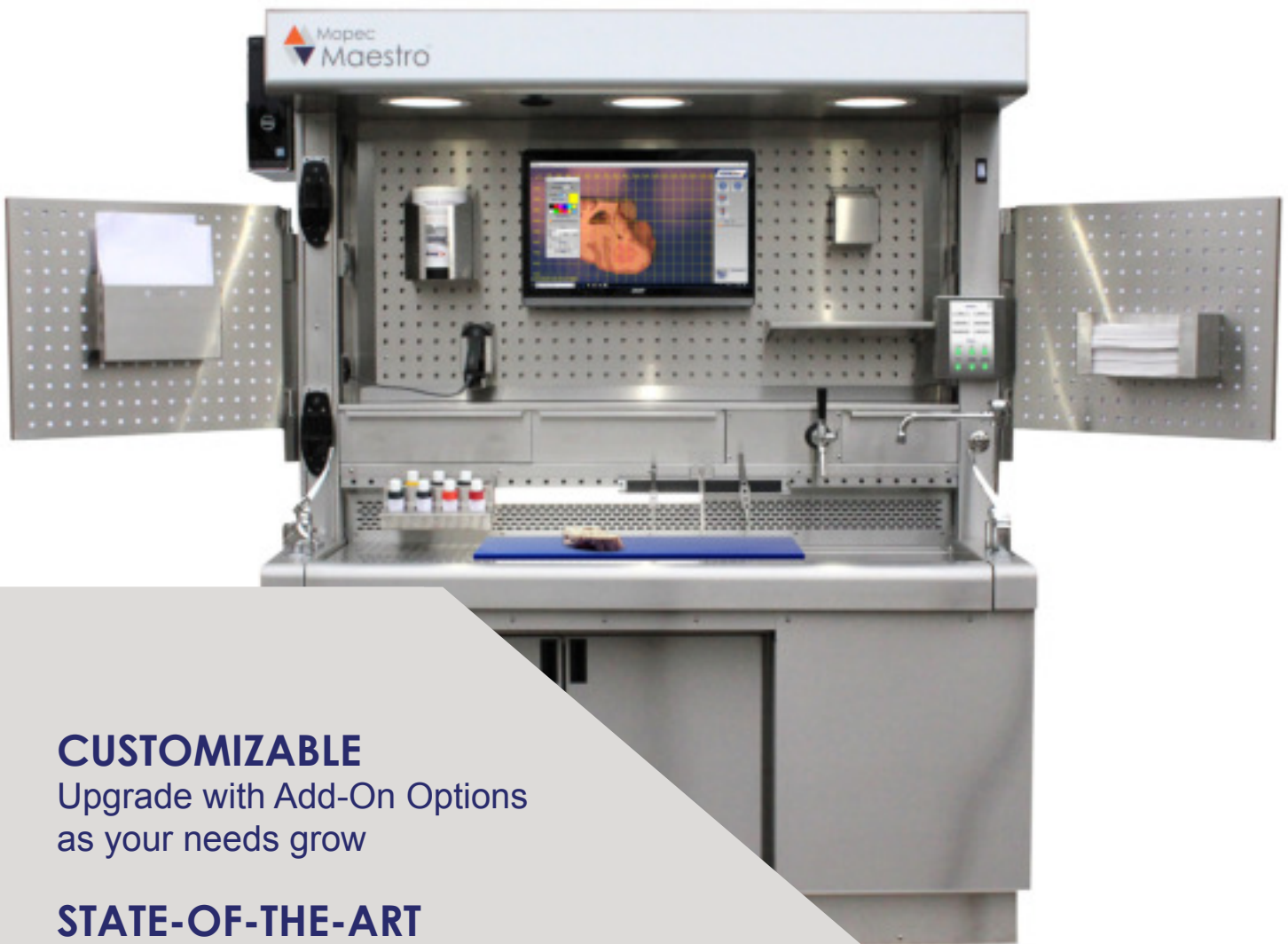




Equip Your Mopec Grossing Station With
The *PathCam*[™] Imaging System



CUSTOMIZABLE

Upgrade with Add-On Options
as your needs grow

STATE-OF-THE-ART

Ultra-D[™] Monitors with optical
technology to view real-time
“Glasses-FREE” 3D video



www.mopec.com



(800) 362-8491



info@mopec.com

INTEGRATED BASELINE PACKAGES

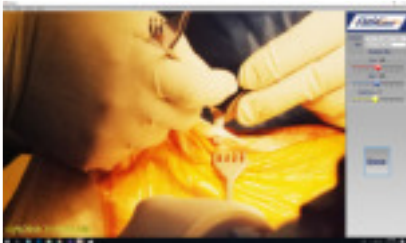
Basic

PathCam™ with cables, mounted in hood and/or retractable

Conversion Box: to send camera signal to computer and monitor

PathCam Imaging Software

- Operate *PathCam* controls: on/off, zoom, brightness, color management, and date & time labeling
- Stream video, capture snapshots, and archive snapshots as JPEG files
- Barcode reader compatible

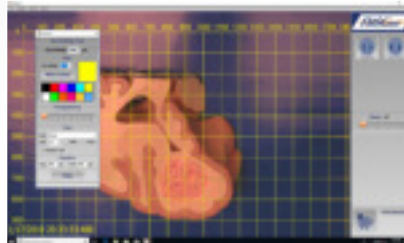


Intermediate

All **Basic** Features

PathCam Imaging Software

- Add graphic notations and measure distances/area in snapshots
- Grid Tool: size biopsies and map structure location

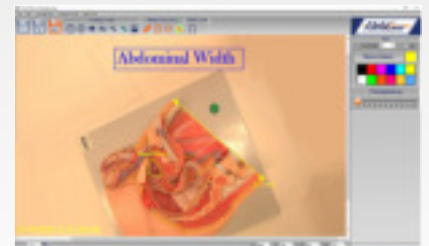


Advanced

Basic & Intermediate Features

PathCam Imaging Software

- Record voice narration independent of video and archive as WAV files
- Record voice narration with video and archive as AVI files



Add-On Options:

- Washable keyboard and mouse
- 21" 4K Touch screen monitor
- 65" 4K *Ultra-D*™ (Glasses-FREE 3D) monitor
- Retractable with *PathCam* control on handle
- Foot pedal *PathCam* control
- Voice command *PathCam* control
- PC with Windows 10: 1 on-board USB3, 7 USB2, 1 HDMI, and 1 VGA port (required and available for purchase)



Foot pedal



Voice command

Made in the United States

Over 25 Years of Experience

Worldwide Shipping

PathCam™
by Mopec

www.mopec.com
(800) 362-8491
info@mopec.com



Grossing Station Imaging System

With Stereoscopic Viewing

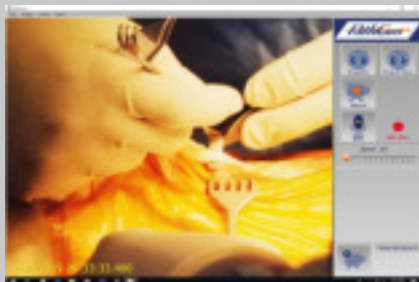
Specifications

Standard Features

- 20 MP Quality Imaging
- Auto Focus
- 10x Optical Zoom
- 12x Digital Zoom
- Digital Output: Frames/Sec
1920 x 1080p @ 25,30,50,60
1920 x 1080i @ 50,60
1280 x 720p @ 25,30,50,60
- Max Fof V 28" x 36" and
Min Fof V .185" x 1.85"

Dimensions

- *PathCam*: 4.50" length,
2.25" diameter & approx. 375 g
- Blue cutting board: 18.5" x 27"



Independent voice recording

Performance

- Mounted in hood and/or
tethered and retractable
- Measure distances and
area in Snapshots
- Grid tool: size biopsies and
map structure location
- Create system folders/files
- Record independent voice
narration
- Record video files with or
without voice narration

Power

- 12V DC
- (7V to 15VDC)
- -20C ~ 60C



PathCam field of range

Compatibility

- Windows 10 open architecture
- Barcode reader compatible
- Folders/files transferable to any
OS system or network
- Works with any Windows word
processor or spreadsheet App.
- Snapshots archived as JPEG's
- Voice narrations archived as WAV's
- Video recordings archived as AVI's
- Videoconference compatible with
3rd party webinar software

Optional Features

- Detachable with *PathCam* control on
handle: four (4) programmable buttons
- Foot Pedal *PathCam* control:
four (4) programmable pedals
- Voice Command *PathCam* control
- Washable keyboard and mouse
- 21" 4K Touch Screen Monitor
- 65" 4K Ultra-D™ (Glasses-Free 3D)
- PC with Windows 10: 1 on-board USB3,
7 USB2, 1 HDMI, and 1 VGA port
(required and available for purchase)