



# *PathCam*<sup>TM</sup>

## IMAGING SYSTEM

With Stereoscopic  
Viewing



### **CUSTOMIZABLE**

Upgrade with Add-On Options  
as your needs grow

### **STATE-OF-THE-ART**

*Ultra-D*<sup>TM</sup> Monitors with optical  
technology to view real-time  
“Glasses-FREE” 3D video



[www.mopec.com](http://www.mopec.com)



(800) 362-8491



[info@mopec.com](mailto:info@mopec.com)

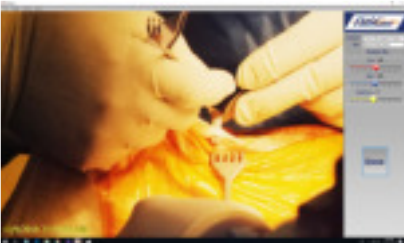
# INTEGRATED BASELINE PACKAGES

## Basic

*PathCam*™ with cables, mounted on light, wall, or stand  
Conversion Box: to send camera signal to computer and monitor  
Individual/multi-video view and record system integration\*

### *PathCam* Imaging Software

- Operate *PathCam* controls: on/off, zoom, brightness, color and date & time labeling
- Stream video, capture snapshots, and archive snapshots as JPEG files
- Barcode reader compatible

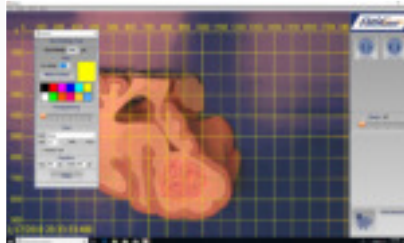


## Intermediate

All **Basic** Features

### *PathCam* Imaging Software

- Add graphic notations and measure distances/area in snapshots
- Grid Tool: size biopsies and map structure location

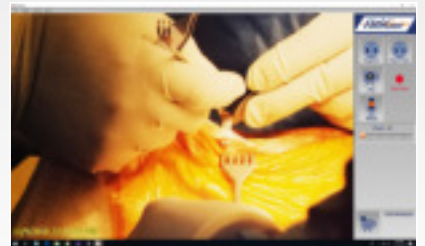


## Advanced

**Basic & Intermediate** Features

### *PathCam* Imaging Software

- Record voice narration independent of video and archive as WAV files
- Record voice narration with video and archive as AVI files



## Add-On Options:

- Washable keyboard and mouse
- 21" 4K Touch screen monitor
- 65" 4K *Ultra-D*™ (Glasses-FREE 3D) monitor
- Detachable with *PathCam* control on handle
- Foot pedal *PathCam* control
- Voice command *PathCam* control
- PC with Windows 10: 1 on-board USB3, 7 USB2, 1 HDMI, and 1 VGA port (required and available for purchase)



Foot pedal



Voice command

\* Design and engineering services available for lab and video system configuration.

Made in the United States

Over 25 Years of Experience

Worldwide Shipping



[www.mopec.com](http://www.mopec.com)  
(800) 362-8491  
[info@mopec.com](mailto:info@mopec.com)



## Anatomy & Autopsy Imaging System

### With Stereoscopic Viewing

\* Design and engineering services available for lab and video system configuration.

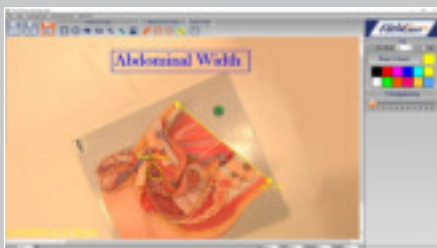
## Specifications

### Standard Features

- 20 MP Quality Imaging
- Auto Focus
- 10x Optical Zoom
- 12x Digital Zoom
- Digital Output:  
1920 x 1080p @ 25,30,50,60  
1920 x 1080i @ 50,60  
1280 x 720p @ 25,30,50,60
- Max Fof V 28" x 36" and  
Min Fof V .185" x 1.85"

### Power

- 12V DC
- (7V to 15VDC)
- -20C ~ 60C



Measure distances and area

### Performance

- Mounting options\*: surgical light, wall, and/or on side cart
- Measure distances and area in snapshots
- Grid tool: size biopsies and map structure location
- Create system folders/files
- Record independent voice narration
- Record video files with or without voice narration
- Individual/multi-video view and record system integration\*

### Dimensions

- 2.25" diameter/4.50" length
- Approximately 375 g



Detachable *PathCam* with handle

### Compatibility

- Windows 10 open architecture
- Barcode reader compatible
- Folders/files transferable to any OS system or network
- Works with any Windows word processor or spreadsheet App.
- Snapshots archived as JPEG's
- Voice narrations archived as WAV's
- Video recordings archived as AVI's
- Videoconference compatible with 3rd party webinar software

### Optional Features

- Detachable with *PathCam* control on handle: four (4) programmable buttons
- Foot Pedal *PathCam* control: four (4) programmable pedals
- Voice Command *PathCam* control
- Washable keyboard and mouse
- 21" 4K Touch Screen Monitor
- 65" 4K *Ultra-D™* (Glasses-Free 3D)
- PC with Windows 10: 1 on-board USB3, 7 USB2, 1 HDMI, and 1 VGA port (required and available for purchase)

