



Anatomy & Autopsy Imaging System With Stereoscopic Viewing

* Design and engineering services available for lab and video system configuration.

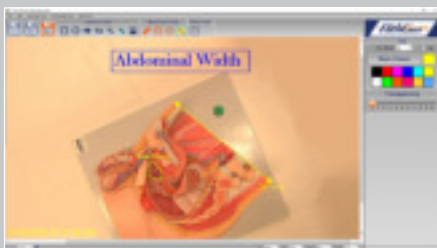
Specifications

Standard Features

- 20 MP Quality Imaging
- Auto Focus
- 10x Optical Zoom
- 12x Digital Zoom
- Digital Output:
1920 x 1080p @ 25,30,50,60
1920 x 1080i @ 50,60
1280 x 720p @ 25,30,50,60
- Max Fof V 28" x 36" and
Min Fof V .185" x 1.85"

Power

- 12V DC
- (7V to 15VDC)
- -20C ~ 60C



Measure distances and area

Performance

- Mounting options*: surgical light, wall, and/or on side cart
- Measure distances and area in snapshots
- Grid tool: size biopsies and map structure location
- Create system folders/files
- Record independent voice narration
- Record video files with or without voice narration
- Individual/multi-video view and record system integration*

Dimensions

- 2.25" diameter/4.50" length
- Approximately 375 g



Detachable PathCam with handle

Compatibility

- Windows 10 open architecture
- Barcode reader compatible
- Folders/files transferable to any OS system or network
- Works with any Windows word processor or spreadsheet App.
- Snapshots archived as JPEG's
- Voice narrations archived as WAV's
- Video recordings archived as AVI's
- Videoconference compatible with 3rd party webinar software

Optional Features

- Detachable with PathCam control on handle: four (4) programmable buttons
- Foot Pedal PathCam control: four (4) programmable pedals
- Voice Command PathCam control
- Washable keyboard and mouse
- 21" 4K Touch Screen Monitor
- 65" 4K Ultra-D™ (Glasses-Free 3D)
- PC with Windows 10: 1 on-board USB3, 7 USB2, 1 HDMI, and 1 VGA port (required and available for purchase)