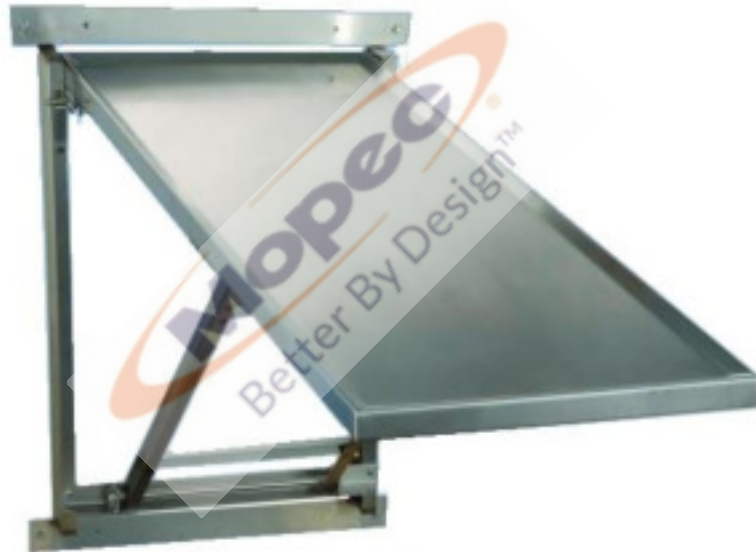


OD100

FOLD DOWN PROCEDURE TABLE



REFERENCE
MANUAL



The Better Product People

21750 Coolidge Hwy. Oak Park, MI 48237
(800) 362-8491 | Mopec.com

IMPORTANT INFORMATION

MODEL NO.:

SERIAL NO.:

DATE OF PURCHASE:

DATE OF INSTALLATION:

INSTALLATION NOTES:



SERVICE AND SUPPORT:



The Better Product People

21750 Coolidge Hwy. Oak Park, MI 48237
(800) 362-8491 | Mopec.com

TABLE OF CONTENTS

IMPORTANT INFORMATION	2
TABLE OF CONTENTS	3
INTRODUCTION	4
UNPACKING	5
INSTALLATION	6
CLEANING AND MAINTENANCE	7
STANDARD FEATURES	8
UNIT DRAWING	9
WARRANTY	10



INTRODUCTION

Your OD100 is a wall mounted, folding procedure table. The OD100 provides a compact work area for multiple procedures. This allows a more agronomical workspace for Prep, surgery and animal exams can be performed on this table.

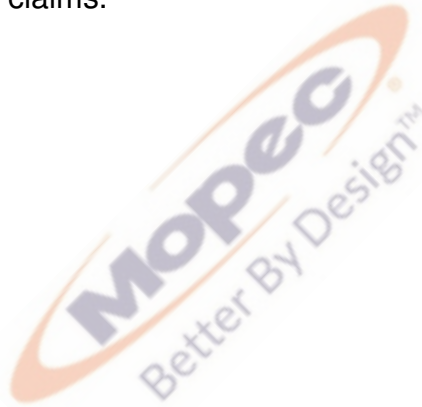
Designed to be wall mounted, this table drops to 90°. When finished, simply fold and lock in an upright position against the wall. One hand easy operation.

Made of 18 gauge stainless steel, the perimeter has a marine edge for containing fluids on the work surface. Load capacity is 300 lbs. Table dimensions are 21" W x 45" L and elevates 6"



UNPACKING

- 1.) Carefully inspect the exterior of the shipping container before opening. If the crate is damaged and the product has sustained damage then immediately contact Mopec and the freight carrier. **Never discard the shipping container even if it is damaged beyond recognition.**
- 2.) The receiver must note any suspected damage on the bill of lading and sign it. Mopec will help assist in filing a claim for product repair and/or replacement.
- 3.) Carefully open the containers and inspect the goods for concealed damage. If concealed damage is noticed (i.e. Broken welds, dented stainless, scratches, etc.) Follow through as noted above, and again do not discard the shipping material, they are important in settling claims.



INSTALLATION

The OD100 is mounted to a wall and must be secured with HLC-L 10x50/15 Hilti or equivalent anchors (not provided) 2 anchors across the top and two the bottom of the table frame.



CLEANING AND MAINTENANCE

DISINFECTING AND MAINTAINING STAINLESS STEEL SURFACES

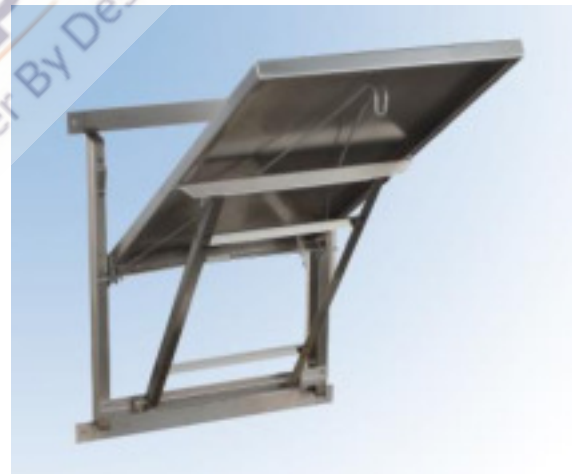
All stainless steel surfaces can be cleaned with soap and water, which will remove debris.

The stainless steel surfaces can be disinfected with a non caustic disinfectant. We suggest using BE045 Path Cloud or BE047 Bench Wipe for cleaning purposes. We recommend you **NOT USE** a bleach solution to clean your unit. Bleach will eventually erode stainless steel if not thoroughly rinsed. **The use of chlorine bleach will VOID THE STAINLESS STEEL WARRANTY**

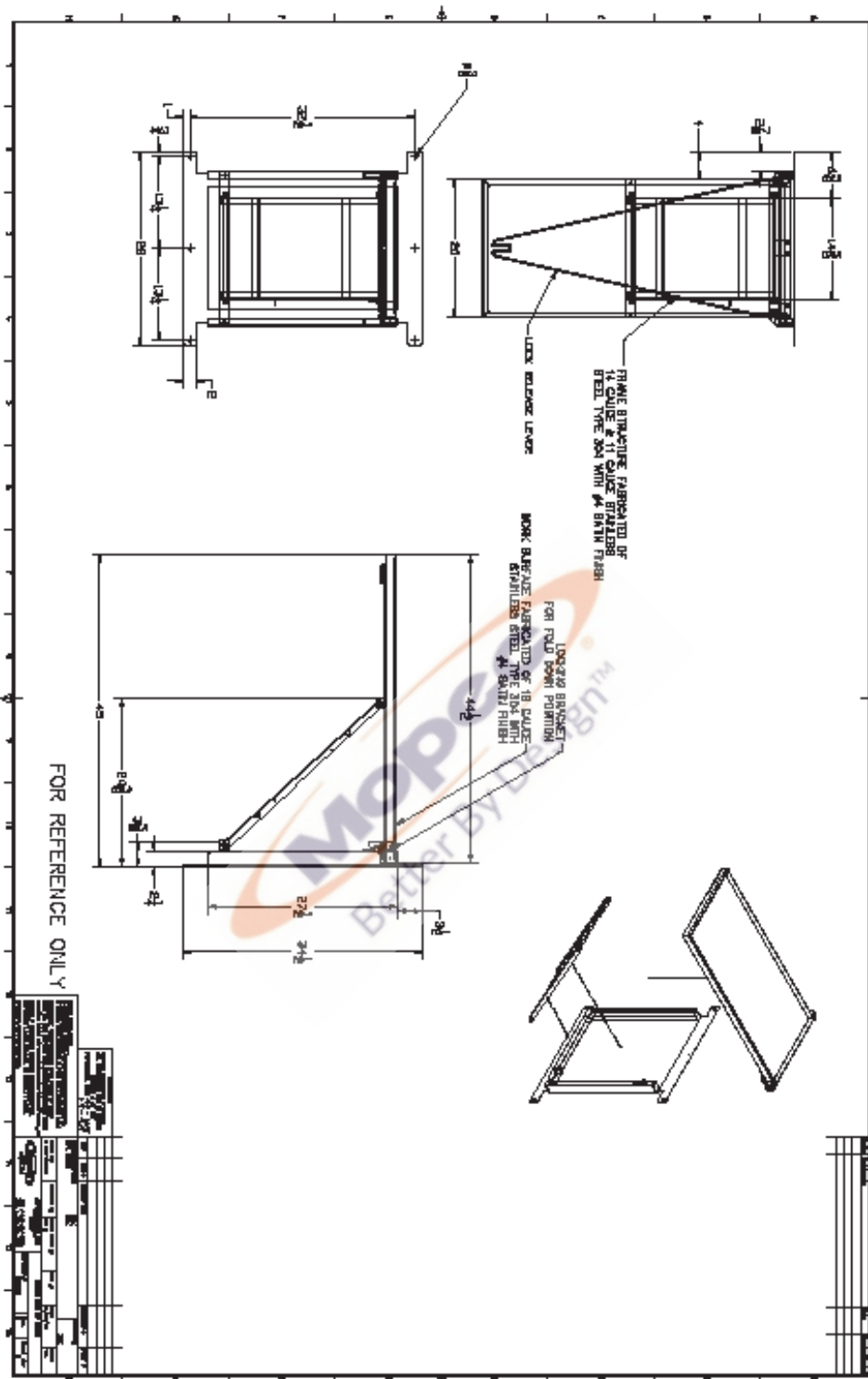
During the cleaning we suggest wiping the surface in the same direction as the satin finish which will help lift up dirt from the grain finish. Scratches can be removed simply by utilizing a "non-metallic" abrasive pad and rubbing in the same direction as the satin finish. Since most abrasive pads vary from one supply to another, we suggest rubbing the entire surface to blend the scratch and blend the balance of the surface.

STANDARD FEATURES

- 18 Gauge stainless steel with all exposed welds ground and polished
- The pivoting assembly uses 2 nylon wheels that allow the table to be stored in an upright, vertical position when not in use
- Stainless steel release handle unlocks the table from an upright position to a 90° horizontal position
- Four holes are positioned on table for mounting
- Supports up to 300 pounds.



Standard OD100



WARRANTY

MOPEC OD100

THE OD100 FOLD DOWN PROCEDURE EQUIPMENT AND ALL PARTS THEREOF, MANUFACTURED BY MOPEC, IS WARRANTED TO OUR CUSTOMERS TO BE FREE FROM DEFECTS IN MATERIAL AND CONSTRUCTION WHEN SUBJECTED TO NORMAL USE AND SERVICE. THIS WARRANTY SHALL NOT APPLY TO ANY EQUIPMENT OR PART THEREOF, WHICH HAS BEEN ALTERED, ACCIDENT, MISUSE, OR USED MORE THAN ITS PUBLISHED CAPACITY.

MOPEC'S OBLIGATION UNDER THIS WARRANTY IS LIMITED TO REPAIRING OR REPLACING, WITHOUT CHARGE ANY PART OR PARTS OF SAID EQUIPMENT WHICH PROVE DEFECTIVE AND WHICH OUR EXAMINATION SHALL DISCLOSE TO OUR SATISFACTION TO BE THUS DEFECTIVE. WE DO NOT ACCEPT RESPONSIBILITY FOR CONSEQUENTIAL DAMAGE RESULTING FROM SUCH DEFECTIVE PARTS. THE PERIOD OF WARRANTY ON MOPEC EQUIPMENT IS AS FOLLOWS:

ALL EQUIPMENT: EQUIPMENT IS WARRANTED IN ITS ENTIRETY FOR A PERIOD OF ONE (1) YEAR FROM THE DATE OF SALE. THIS WARRANTY INCLUDES PARTS AND LABOR FOR COVERED REPAIRS.

MOPEC WILL ACCEPT INCOMING DEFECTIVE PARTS, ONLY WHEN SHIPMENT IS PREPAID. THIS WARRANTY CONTRACT IS IN LIEU OF ALL OTHER WARRANTIES, AND RELEASES MOPEC OF ALL OTHER OBLIGATIONS OR LIABILITIES. IT NEITHER ASSUMES NOR AUTHORIZES ANY PERSON OR PERSONS TO ASSUME ANY OBLIGATION OTHER THAN THAT COVERED IN THIS WARRANTY.

MOPEC, 21750 COOLIDGE HIGHWAY, OAK PARK, MI 48237.