

OA SERIES

OA200 OA201 OA210 OA211

Large Animal Necropsy Table



REFERENCE MANUAL



21750 Coolidge Highway • Oak Park, MI 48237 USA
+1 800-362-8491 • 248-291-2040 • Email: info@mopec.com

OA Series Necropsy Table

MODEL NO.:

SERIAL NO.:

DATE OF PURCHASE:

DATE OF INSTALLATION:

INSTALLATION NOTES:



SERVICE AND SUPPORT:



21750 Coolidge Highway • Oak Park, MI 48237 USA
+1 800-362-8491 • 248-291-2040 • Email: info@mopec.com

TABLE OF CONTENTS

INTRODUCTION	4
STANDARD FEATURES	6
OPTIONS	6
INSTALLATION/SET UP	7
CLEANING INSTRUCTIONS	8
WARNING	9
WARRANTY	11
UNIT DRAWINGS	12
OA200	12
OA210	13
OA211	14



INTRODUCTION

The OA Series are large capacity elevating tables capable of supporting heavy loads. Designed for necropsy on large animals, the OA Series are designed so that when it initially elevates, a tilt will be incurred allowing for the mechanism that holds the animal to be locked securely in place and not roll off the table.

Designed to handle a centralized load of 5,000 pounds and an offset load of 2,500 pounds. Lift has a capacity of 5,000 pounds. The OA Series is also provided with a drain hole with removable perforated screen to help collect debris.

The table consists of a heavy-duty stainless steel top, hydraulic scissor lift and hydraulic pump unit. Designed to fit within a pit of the room in its lowered position, the tables will be flush with the finish floor line. The standard top is capable of raising 42". Standard table top is 48" wide and 84" long.

The Necropsy table will consist of a heavy duty stainless steel top, hydraulic scissor lift and hydraulic pump unit. This unit will be designed to fit within the pit of the room of concern and in its lowered position will be flush and level with the finish floor line of the room. In its initial lift from the finish floor line the table will tilt 3/4" to 1" creating a slope toward the back of the table. This tilt will be maintained during the full lift of the table until the table is lowered back into the pit where it will be flush and level with the finish floor line. The table will be capable of reaching a height of 45 1/8 inches from the finish floor line. Maximum Lifting capacity of the table will be 2000 lbs. The table top will be 48 inches wide and 84 inches long. Available in a rectangular or kidney shape and with or without casters.

OA200 Rectangular, Tilting

- 3/4" to 1" tilted top
- Heavy duty 304 stainless steel top
- The OA200 is designed to handle a centralized load up to 5,000 pounds and an offset load of 2,500 pounds.
- Safety toe guard
- Removable drain funnel with limit switch protection
- The hydraulic system consists of a directly-coupled motor and pump combination, oil reservoir, solenoid operating lowering valve and necessary piping
- Electrical Requirement: 110v or 230v

OA Series Necropsy Table

- The electric motor is a wash-down motor capable of withstanding high pressure washdowns.

OA201 Rectangular, Tilting on casters

- Mobile unit on casters
- 3/4" to 1" tilted top
- Heavy duty 304 stainless steel top
- The OA201 is designed to handle a centralized load up to 5,000 pounds and an offset load of 2,500 pounds.
- Safety toe guard
- Removable drain funnel with limit switch protection
- The hydraulic system consists of a directly-coupled motor and pump combination, oil reservoir, solenoid operating lowering valve and necessary piping
- Electrical Requirement: 110v or 230v
- The electric motor is a wash-down motor capable of withstanding high pressure washdowns

OA210 Kidney Shape, Tilting

- 3/4" to 1" tilted top
- Heavy duty 304 stainless steel top
- The OA210 is designed to handle a centralized load up to 5,000 pounds and an offset load of 2,500 pounds.
- Safety toe guard
- Removable drain funnel with limit switch protection
- The hydraulic system consists of a directly-coupled motor and pump combination, oil reservoir, solenoid operating lowering valve and necessary piping
- Electrical Requirement: 110v or 230v
- The electric motor is a wash-down motor capable of withstanding high pressure washdowns

OA211 Kidney Shape, Tilting on casters

- Mobile unit on casters
- 3/4" to 1" tilted top
- Heavy duty 304 stainless steel top
- The OA211 is designed to handle a centralized load up to 5,000 pounds and an offset load of 2,500 pounds.
- Safety toe guard
- Removable drain funnel with limit switch protection
- The hydraulic system consists of a directly-coupled motor and pump combination, oil reservoir, solenoid operating lowering valve and necessary piping
- Electrical Requirement: 110v or 230v
- The electric motor is a wash-down motor capable of withstanding high pressure washdowns
- It is the responsibility of the customer to ensure that there is adequate room from receiving to final destination of equipment.

OA Series Necropsy Table



STANDARD FEATURES

OA Series Standard Features

Table Top: The table top consists of 11 gauge 304 stainless steel with a #4 satin finish. The top piece is fabricated with a 3-1/2" perimeter raised at an angle of about 12°.

Table Drain: Large free flowing drain hole. The drain hole may have a drain cone welded in with a continuous weld.

Welds: All welds are a continuous type TIG weld utilizing only stainless steel as a filler. Any exposed welds are ground smooth and re-grained to match the #4 satin finish.

Heavy-Duty Scissor Lift: The scissor lift is fabricated for heavy-duty use utilizing heavy-duty welded structural steel. The base frame and top frame are fabricated of 3" channel steel with a 1/4 " thick wall for the guide members and 3" angle with 1/4" thick wall or the end plates. The scissor lift arm assemblies are fabricated of 3" thick heavy bar steel, welded, drilled and inspected for absolute conformance. All pivot points and rollers are fitted with grease fittings and contain molybdenum disulfide grease such as Molub-Alloy No. 2. The collapsed height is 8" and the vertical travel is 42" (106.6 cm) yielding a 50" (127 cm) extended height. The scissor lift is capable of a 2500 pound offset load and 5000 pounds centrally loaded.

Hydraulics: The hydraulic system consists of a directly coupled motor and pump combination, oil reservoir, solenoid operated lowering valve and the necessary piping. The electric motor is a wash down motor capable of withstanding high pressure washdowns.

The unit is completely assembled with solenoid valve, check valve, filler breather, pressure compensated flow control valve, electrical control and relief valve. The pump unit is assembled and tested at the factory.

OPTIONS

OO048 NEMA 4 Washdown: Able to withstand pressure washing applications. Unit can be customized to fit your lab requirements with other additional options.

INSTALLATION / SET-UP

(UNCRATING)

The first step in installing your new Animal Surgery Table is to carefully inspect the exterior of the shipping container before opening. If the crate is damaged and the product has sustained damage, immediately contact Mopec and the carrier; never discard the shipping container even if seriously damaged. Have the driver note any suspected damage on the bill of lading and sign it. Mopec will help assist in filing a claim for product repair and/or replacement. Carefully open the containers and inspect the goods for concealed damage. If concealed damage is noticed (i.e. cracked Plexiglas, broken welds, dented stainless, etc.) follow through as noted above, and again do not discard the shipping material, they are important in settling claims.

(INSTALLATION)

Once the Necropsy Table is unpackaged, carefully place it in the area where it is to be used. Attached is the drawings of concern along with American Lift "Hydraulic Scissor Lift Operating & Maintenance Instructions". Carefully read the manual regarding pit installations and all safety instructions.

IMPORTANT: CAREFULLY READ THE INSTALLATION INFORMATION AND PROVIDE LOCKOUT PROCEDURES WHEN OPERATING THE HYDRAULIC, SEE FIG. 5 TO REVIEW THE MAINTENANCE DEVICES.

CLEANING INSTRUCTIONS

DISINFECTING AND MAINTAINING STAINLESS STEEL SURFACES

All stainless steel surfaces can be cleaned with soap and water, which will remove debris.

The stainless steel surfaces can be disinfected with a non caustic disinfectant. We suggest using BE045 Path Cloud or BE047 Bench Wipe for cleaning purposes. We recommend you **DO NOT USE** a bleach solution to clean your unit, bleach will eventually erode stainless steel if not thoroughly rinsed. **The use of chlorine bleach will VOID THE STAINLESS STEEL WARRANTY**

During the cleaning we suggest wiping the surface in the same direction as the satin finish which will help elevate dirt from the grain finish.

Scratches can be removed simply by utilizing a "non-metallic" abrasive pad and rubbing in the same direction as the satin finish.

Since most abrasive pads vary from one supply to another, we suggest rubbing the entire surface to blend the scratch and blend the balance of the surface.

WARNING

FOR SCISSOR LIFTS

1. Do not operate this scissor lift unless you have training and authorization.
2. Read, understand, and follow these instructions, the hazard warnings on the scissor lift, and the warnings / instructions contained in the owner's manual.
3. Never go under the scissor lift unless the maintenance device is engaged in accordance with manufacturer's instructions.
4. Prior to using the scissor lift:
 - Verify that all safety devices supplied with scissor lift (guard rails, restraint chains, toe guards, and warning bells if so equipped), are in place and functioning properly.
 - Operate the scissor lift through one complete lift / lower cycle and verify it proper operation. At the same time, inspect scissor lift for any visible or obvious damage. If there is any damage, or unusual vibration or noise, remove the lift from service using approved lockout procedures. Notify maintenance personnel immediately.
5. Do not exceed the lift's capacity as stated on the nameplate and center loads on the lift. Be aware that the lift may have reduced capacity when loads are rolled over the platform sides or ends. Refer to nameplate for reduced capacity under these conditions.
6. If load(s) is mobile, secure load in a fixed position before operating lift.
7. Prior to operating the lift, ensure that all personnel on or near the lift are aware of its imminent operation, and that no person will be in harms way during the use of the lift.
8. Ensure that objects are clear of the areas beneath the platform, and immediately surrounding the perimeter of the lift, while it is in use.
9. Keep area around the lift free of oil, objects, and debris that could cause slipping or stumbling into or under the lift.
10. If lift is equipped with a hinged bridge(s), bridge must overlap truck bed a minimum of 4" (100mm) before use. Do not use bridge if it is supported solely by its lifting chain.
11. If maintenance or service is required:
 - Only authorized service personnel shall provide maintenance / service on the lift.
 - Follow approved lock out procedures.
 - Do not work on or under the lift without properly engaging the lift's maintenance device.
 - The lift shall not be modified or altered without the written permission of the original manufacturer.

MOPEC NECROPSY TABLE WARRANTY

OA SERIES NECROPSY TABLE EQUIPMENT AND ALL PARTS THEREOF, MANUFACTURED BY MOPEC, IS WARRANTED TO OUR CUSTOMERS TO BE FREE FROM DEFECTS IN MATERIAL AND CONSTRUCTION WHEN SUBJECTED TO NORMAL USE AND SERVICE. THIS WARRANTY SHALL NOT APPLY TO ANY EQUIPMENT OR PART THEREOF, WHICH HAS BEEN SUBJECT TO ALTERATIONS, ACCIDENT, MISUSE, OR WHICH HAS BEEN USED MORE THAN ITS PUBLISHED CAPACITY.

OUR OBLIGATION UNDER THIS WARRANTY IS LIMITED TO REPAIRING OR REPLACING, WITHOUT CHARGE ANY PART OR PARTS OF SAID EQUIPMENT WHICH PROVE DEFECTIVE AND WHICH OUR EXAMINATION SHALL DISCLOSE TO OUR SATISFACTION TO BE THUS DEFECTIVE. WE DO NOT ACCEPT RESPONSIBILITY FOR CONSEQUENTIAL DAMAGE RESULTING FROM SUCH DEFECTIVE PARTS. THE PERIOD OF WARRANTY ON MOPEC EQUIPMENT IS AS FOLLOWS:

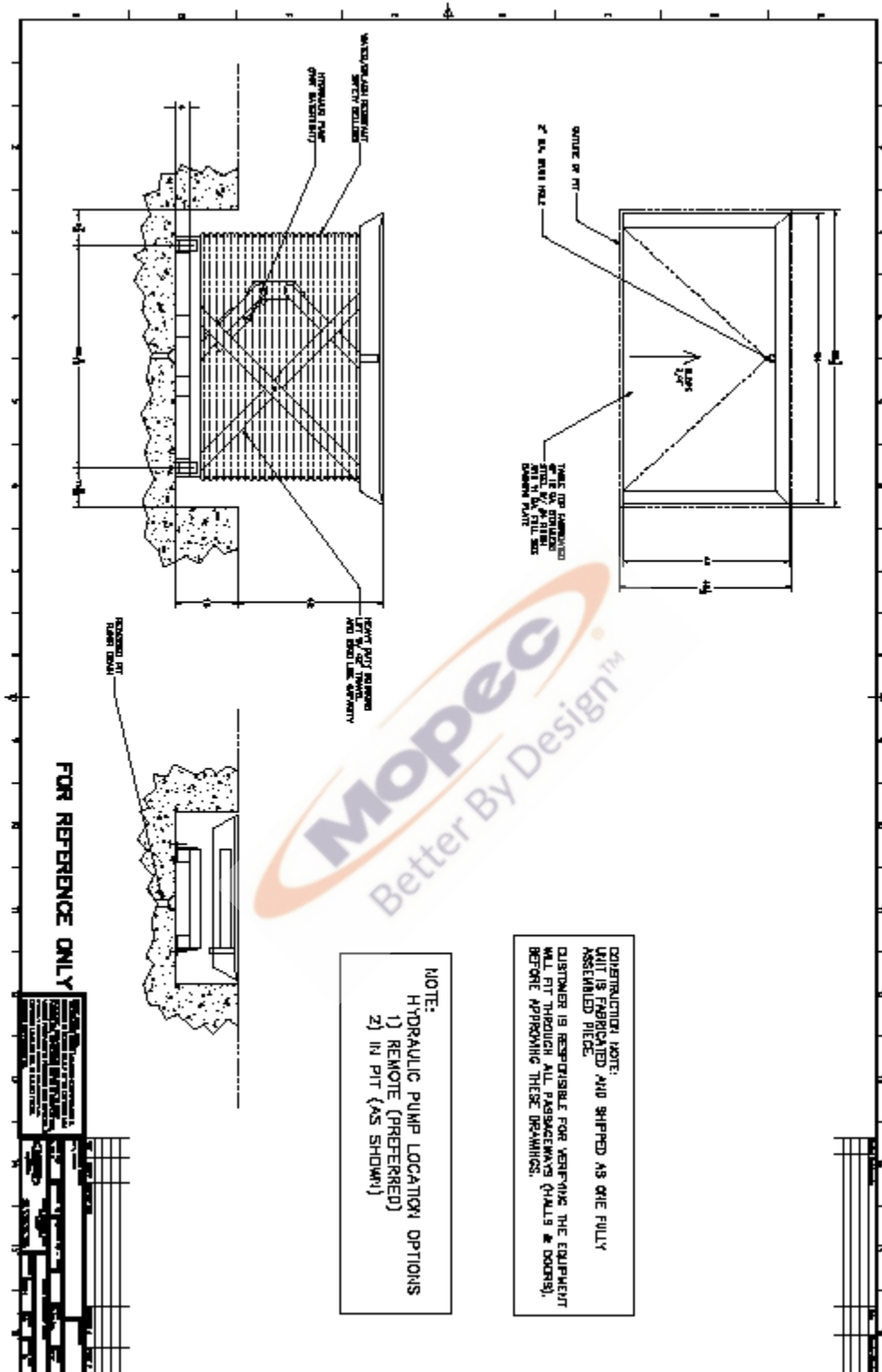
STAINLESS STEEL MATERIAL: STAINLESS STEEL IS WARRANTED FOR LIFE, TO BE FREE OF CORROSION. THIS WARRANTY IS APPLICABLE ONLY IF THE MATERIAL IS CLEANED AND DISINFECTED WITH A CLEANER THAT'S NOT CAUSTIC AND APPROVED FOR STAINLESS. SEE CLEANING AND DISINFECTING PROCEDURES.

ALL EQUIPMENT: EQUIPMENT IS WARRANTED IN ITS ENTIRETY FOR A PERIOD OF ONE (1) YEAR FROM THE DATE OF SALE. THIS WARRANTY INCLUDES PARTS AND LABOR FOR COVERED REPAIRS.

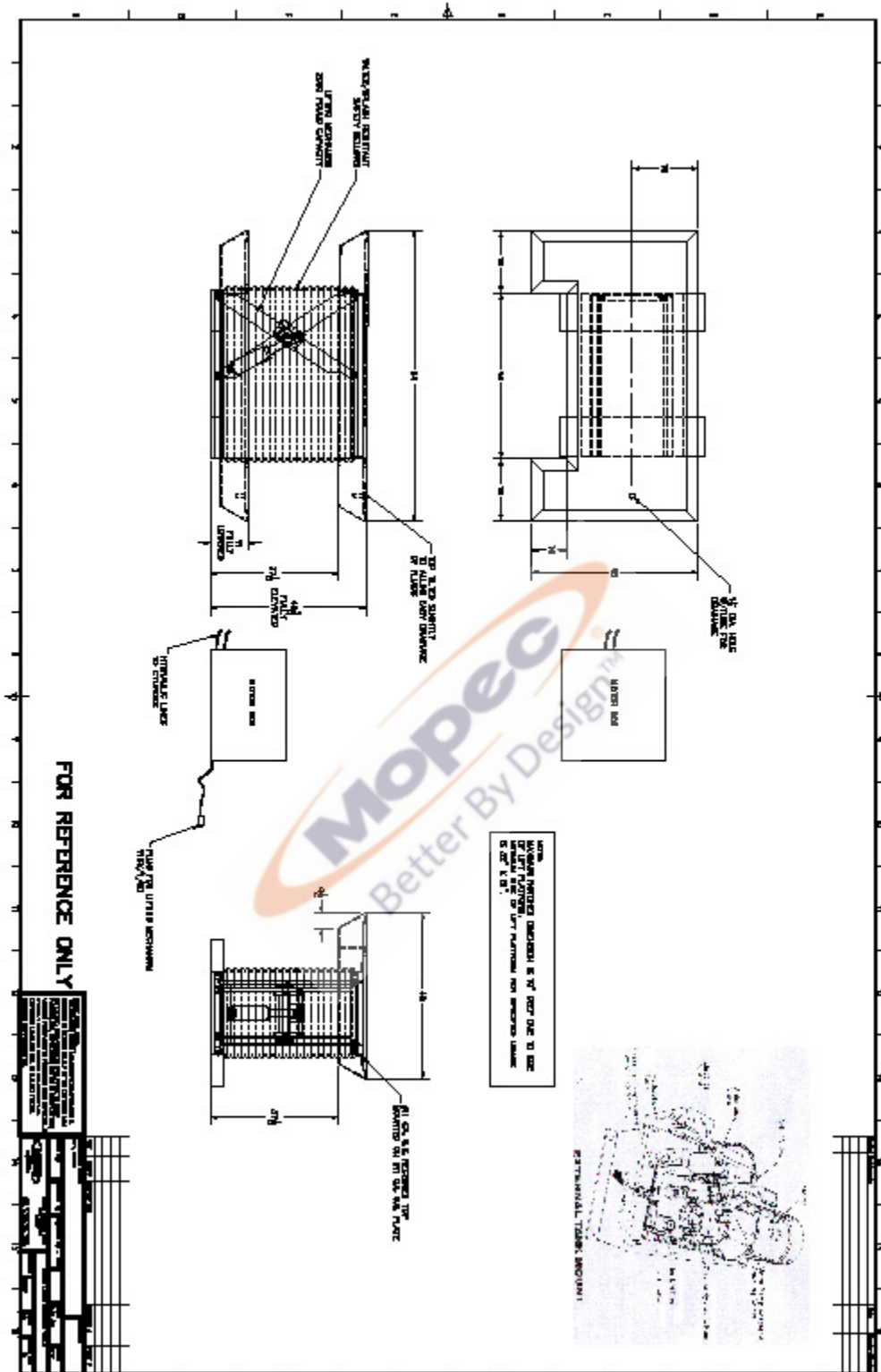
MOPEC WILL ACCEPT INCOMING DEFECTIVE PARTS, ONLY WHEN SHIPMENT IS PREPAID. THIS WARRANTY CONTRACT IS IN LIEU OF ALL OTHER WARRANTIES, AND RELEASES MOPEC OF ALL OTHER OBLIGATIONS OR LIABILITIES. IT NEITHER ASSUMES NOR AUTHORIZES ANY PERSON OR PERSONS TO ASSUME ANY OBLIGATION OTHER THAN THAT COVERED IN THIS WARRANTY.

MOPEC, 21750 Coolidge Hwy, Oak Park MI 48237 (248) 291-2040

OA Series Necropsy Table



OA Series Necropsy Table



OA Series Necropsy Table

