

MC100

Dual Grossing Workstation



REFERENCE MANUAL

Rev 6-10-14 ©



21750 Coolidge Highway • Oak Park, MI 48237 USA
+1 800-362-8491 • 248-291-2040 • Email: info@mopec.com

IMPORTANT INFORMATION

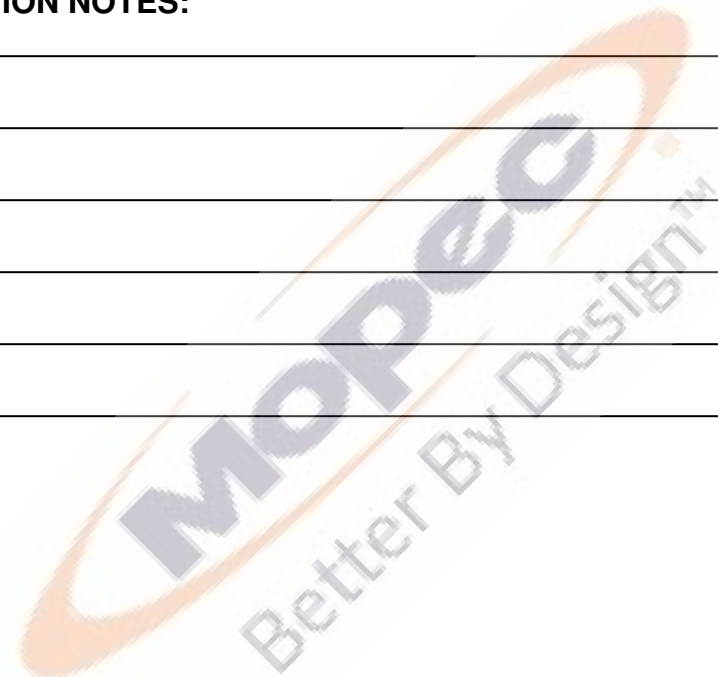
MODEL NO.:

SERIAL NO.:

DATE OF PURCHASE:

DATE OF INSTALLATION:

INSTALLATION NOTES:



SERVICE AND SUPPORT:



21750 Coolidge Highway • Oak Park, MI 48237 USA
+1 800-362-8491 • 248-291-2040 • Email: info@mopec.com

TABLE OF CONTENTS

IMPORTANT INFORMATION	2
TABLE OF CONTENTS	3
CUSTOMER AND TECHNICAL SERVICE	4
INTRODUCTION	5
UNPACKING	6
AIR HANDLING SPECIFICATIONS AND REQUIREMENTS	7-8
INSTALLATION	9
FEATURES AND FUNCTIONALITY	10-11
CLEANING AND MAINTENANCE	12
WARRANTY	14
APPENDIX DRAWINGS	15
ROUGH-IN	16
UNIT DRAWING	17

CUSTOMER AND TECHNICAL SUPPORT

All Mopec staff members are Customer Service experts. We believe in providing nothing but the best possible service for all our customers. Our Technical Support group includes everyone from our design engineers to members of our production group. All are dedicated to providing comprehensive and courteous support to all Mopec customers.

The following information is included to help our customers communicate with Customer and Technical Support at Mopec.



21750 Coolidge Hwy. Oak Park, MI 48237
(800) 362-8491 | Mopec.com

INTRODUCTION

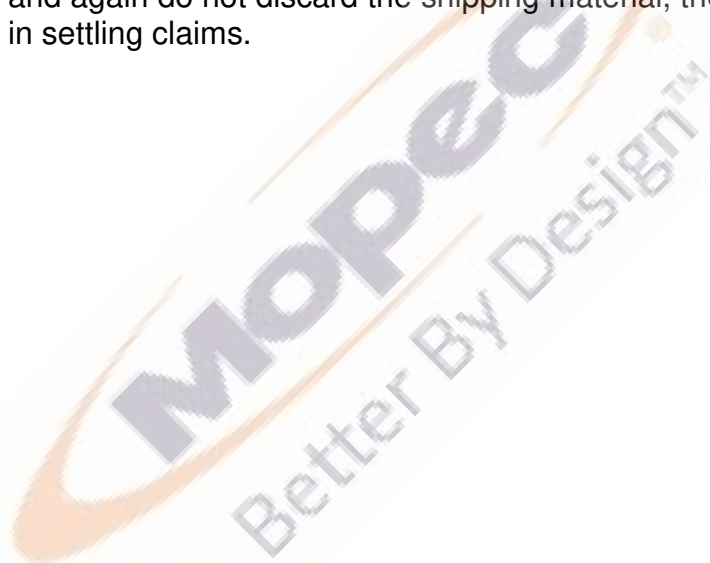
The MC100 grossing workstation is designed with dual dissection areas at each end and a common work area between each station. Ventilation is strategically designed to overhang the entire working surface.

Each dissection station includes identical standard features. The dissection areas are designed with a built-in sloped surface which drains into the large sinks positioned at each end of the grossing station. The optional disposals can be incorporated on each sink for easy and effortless disposal of residual tissue. A deck mounted hot/cold faucet fixture is strategically located on the center of each sink allowing large specimens to be rinsed. Formalin can be conveniently placed above each grossing station in easy dispensing carboys. Table sprays are located on the top side of the sloped dissection surfaces for rinsing the work surface. The table spray retracts within the table helping eliminate cumbersome hoses. Equipped with transcription machine stands that are available with angled surface, power outlets and a wire chase. The central common work area is flat with three overhanging shelves. Ventilation is uniform from one end to the other. The back-splash which extends the full height of the room contains the ventilation chamber. The top of the chamber has a five point connection.

Your comments and suggestions are always welcome and we invite you to call and let us know what you think of the MC100 Grossing Workstation.

UNPACKING

- 1.) Carefully inspect the exterior of the shipping container before opening. If the crate is damaged and the product has sustained damage then immediately contact Mopec and the freight carrier. **Never discard the shipping container even if it is damaged beyond recognition.**
- 2.) The receiver should note any suspected damage on the bill of lading and sign it. Mopec will help assist in filing a claim for product repair and/or replacement.
- 3.) Carefully open the containers and inspect the equipment for concealed damage. If damage is noticed (i.e. Broken welds, dented stainless, scratches, etc.) Follow through as noted above, and again do not discard the shipping material, they are important in settling claims.



AIR HANDLING

DESIGN PARAMETERS

The MC100 Dual Grossing Station is designed to “adequately ventilate the work surface to insure the safety of the user”. The one adverse effect of adequate ventilation is noise. The issue of noise has been given notable consideration, but does not govern the ultimate design criteria.

Our design criteria are the most stringent utilizing standards as outlined by the Committee on Industrial Ventilation and Escape Velocity Parameters. The ventilation requirements are cumulative through the unit and suggested as being 1200 cfm. Ventilation is solely dependent on the amount of exposed tissue. Our suggestion of 1200 cfm is high, which will cover the worst conditions. We suggest you have the ability to adjust the air flow. This airflow adjustment should be in the ceiling so as not to be continuously changed.

Design data is based on the table as a completely flooded vat of formaldehyde. Ideal conditions in a grossing environment obviously do not warrant such a large amount of formaldehyde. Therefore assumptions are made regarding grossing practices and ultimately formaldehyde concentrations.

Perforated Grill Design

The grill for the MC100 is 8" high at an angle of 60 Degrees and the length of the unit shown on the drawings. The grill is perforated with 3/16" x 5/8" slots on 13/16" x 3/8" staggered centers, yielding a 30% open area.

The preceding design parameters of the Mopec Grossing Station and suggested ventilation requirements are based on stringent ventilation requirements and ideal conditions. Personalized conditions and practices may warrant an increase and/or decrease of the ventilation.

AIR HANDLING – CONTINUED

GOOD PRACTICE WILL OPTIMIZE YOUR PROTECTION:

1. Never block the ventilation grill.
2. Placing open containers as close to the exhaust grill as possible, yet never blocking the ventilation grill.
3. Grossing should be accomplished as close to the exhaust grill as possible.
4. Strategically locate the Grossing Station away from room air currents.
5. Practice complete rinsing of residual formaldehyde with hand held spray.

Although the Mopec Grossing Workstation can be the answer to formaldehyde exposure, Mopec cannot assume responsibility of exposure since good laboratory practices and room conditions are beyond Mopec's control.

INSTALLATION

PROCEDURE

The MC100 should be assembled in its location and supervised by Mopec personnel. This comes standard with the MC100 Dual Grossing Workstation.

All electrical, water and ventilation stubs should be prepared in accordance with our rough-in dimensions shown on pages 20-21 of this manual.

The electrical service provided for the MC100 must include:

- 1.) A switch or circuit breaker to which the wiring harnesses from the workstation will be connected.
- 2.) This electrical disconnect must be mounted in close proximity to the desired location shown on the rough-in.
- 3.) The switch or circuit breaker must be marked as a disconnecting device.

Connect the 115V, Single Phase, 60Hz, 20 Amp circuit, for the main power (located in the junction box), to your electrical service.

If ordered, install the optional disposal and make all connections that apply, including the additional 115V, Single Phase, 60 Hz, 20 Amp circuit to your electrical service. (This should be on a separate dedicated line.)

Make all remaining plumbing connections and, if necessary, secure the unit to the floor, using fasteners of your choice, placed through the mounting holes in the base.



FEATURES

Hot/Cold Water Fixture: Two swing spout faucets have easily accessible wrist blade handles for hot and cold water controls.

GFCI Receptacle: Two each electrical receptacles are provided. The receptacles are GFCI type with watertight cover.

Inch Centimeter Rulers: Washable, easy to read inch/centimeter rulers are provided.

Recessed Fluorescent Lighting: Work areas are illuminated by two high input fluorescent bulbs mounted under the overhead control panel.

Storage shelves: Two stainless steel shelves are provided, each capable of holding A cubitainer of customer provided formalin.

Utility Cabinets: Located under each drawer with ample space for storage.

Hand Spray Rinse: Chrome plated, brass hand sprayer with soft spray head for controlled rinsing of work surface.

Magnetic Tool Bar: conveniently supports tools on the backsplash out of your way but within reach

OPTIONS

MO020 HALOGEN TASK LIGHT - SINGLE

One 20W halogen bulb on an adjustable 14" arm lets you direct the light to the exact spot you require. The light On\Off switch is located on the base of the light.

MO011 MAGNIFIER FOR TASK LIGHT

Poly magnifier with 2X magnification (MUST HAVE MO020)

MO003 FORMALIN CONTAINER

A 2.5-gallon capacity formalin container sits on the middle shelf for easy dispensing of formalin.

MO004 DICTATION EQUIPMENT STAND

The stainless steel stand is at a 40-degree angle and can be placed at any convenient area on the workstation (see photo on previous page). Your recording device simply sits on the stand. (Recorder Not Included)

BL800 WASTE DISPOSAL, HEAVY DUTY 1HP

A Waste Disposal supplied with built in water solenoid valve with an On/Off disposal switch. The switch is waterproof and is located inside a watertight box.

MO010 HAND SPRAY RINSE

Hand Spray Rinse with control valve. Chrome Plated Fixture w/ high-pressure hose Conveniently located opposite the sink end utilized to completely flush the dissecting board and dissecting area.

MO007 FOOT PEDAL

Includes a dual foot pedal H/C water control valve and a swing spout faucet. Wrist blade handle controls are not available with this option.

MO016 CAMERA STAND

Vertical camera stand with X-Axis & Y-Axis adjustable arm. The stand is capable of supporting both digital and 35MM type cameras.

MO018 FORMALIN COLLECTION

Collection funnel piped to 2 1/2 Gallon carboy with easy grasp handles.

MO009 SAFETY SPLASH SHIELD

Lexan shield on flexible arm for easy positioning. 11" x 12" for safe viewing area.

MB009 PERIMETER RINSE

Full perimeter rinse on three (3) sides. Control valve w/atmospheric vacuum breaker protection included for water flow adjustment

CLEANING AND MAINTENANCE

DISINFECTING AND MAINTAINING STAINLESS STEEL SURFACES

All stainless steel surfaces can be cleaned with soap and water, which will remove debris.

The stainless steel surfaces can be disinfected with a non caustic disinfectant. We suggest using BE045 Path Cloud or BE047 Bench Wipe for cleaning purposes. We recommend you **DO NOT USE** a bleach solution to clean your unit, bleach will eventually erode stainless steel if not thoroughly rinsed. **The use of chlorine bleach will VOID THE STAINLESS STEEL WARRANTY**

During the cleaning we suggest wiping the surface in the same direction as the satin finish which will help elevate dirt from the grain finish.

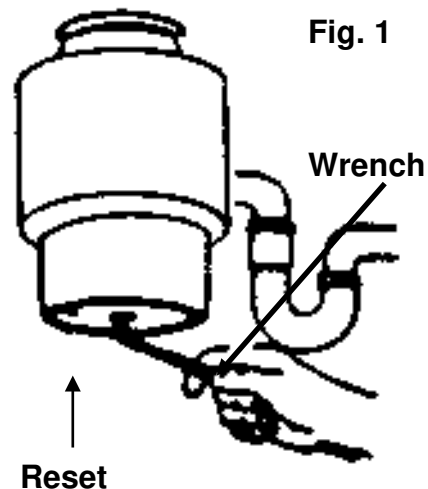
Scratches can be removed simply by utilizing a "non-metallic" abrasive pad and rubbing in the same direction as the satin finish.

Since most abrasive pads vary from one supply to another, we suggest rubbing the entire surface to blend the scratch and blend the balance of the surface.

CORRECTING WASTE DISPOSAL JAMS

The accidental entry of foreign material will cause any Waste Disposal unit to jam. To free jammed material, follow these steps **to avoid personal injury**.

1. Turn off Waste Disposal and shut off cold water.
2. Insert one end of your Self Service Wrench, provided with your Waste Disposal, into the center hole of the bottom of the disposer as shown (fig. 1).
3. Work the wrench back and forth until it moves freely for at least one complete revolution. **Remove the wrench before restarting the Disposal.**
4. Wait 3 to 5 minutes to allow Waste Disposal motor to cool and then push the reset button (fig. 1). **Be sure the main Disposal control switch is in the OFF position before pressing the reset button.**



WARRANTY

MOPEC MC100 DUAL GROSSING WORKSTATION

LIMITED WARRANTY

Products manufactured by Mopec will be free from defects in material and workmanship and conform to Mopec's description or specifications. If a warranty claim is made within one (1) year from the earlier of the date of acceptance/first beneficial use, the defective or nonconforming Product or Part thereof will be repaired or (at Mopec's option) replaced free of charge, FCA Mopec's dock. All warranty claims must be in writing and received by Mopec within the warranty period. The warranty is not transferable (other than to customers of Mopec's authorized Distributors), and will not apply unless the Equipment has been properly installed, maintained and operated in accordance with all instructions; and does not apply to defects, nonconformities or other failure due to Equipment misuse, abuse, modifications, or other causes outside Mopec's control. If a warranty claim is made in writing within the warranty period, the defective or nonconforming Equipment (or Part thereof) will be repaired or (at Mopec's option) replaced free of charge, FCA Mopec's dock.

THERE ARE NO WARRANTIES WHICH EXTEND BEYOND THE DESCRIPTION ON THE FACE HEREOF. THE WARRANTY AS SET FORTH HEREIN IS IN LIEU OF ALL OTHER WARRANTIES, EXPRESS OR IMPLIED, INCLUDING ANY IMPLIED WARRANTY OF MERCHANTABILITY OR FITNESS FOR A PARTICULAR PURPOSE.

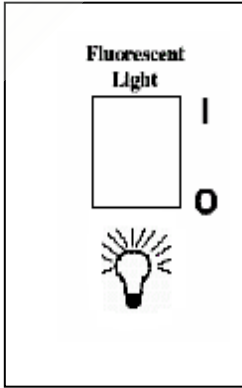
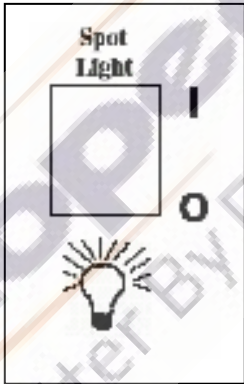
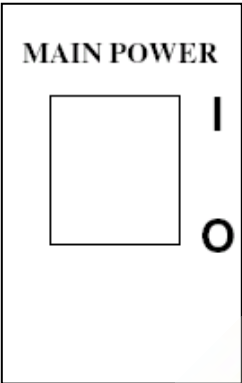
To the extent that Mopec is acting as a supplier of Products manufactured by a third party, the Products will be warranted only to the extent that they are warranted by their manufacturers and Buyer (or its customer) agrees to look solely to the Product manufacturer for all warranty claims.

MOPEC, 21750 COOLIDGE HIGHWAY, OAK PARK, MI 48237.

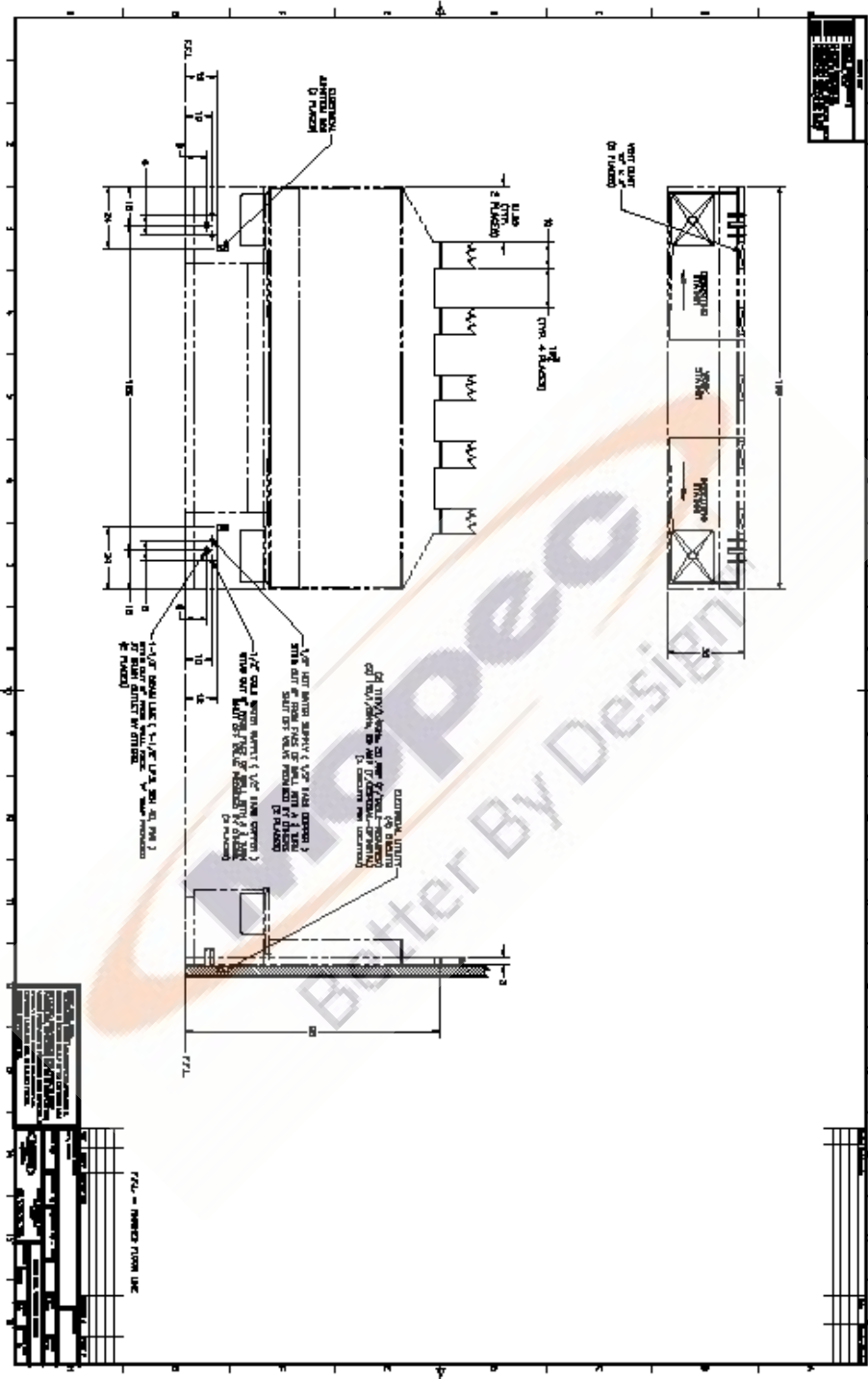
BEFORE SERVICING THE UNIT LOOK FOR HEED THE FOLLOWING LABEL



Symbols Found on the Electrical Control Panel



APPENDIX – ROUGH-IN DRAWINGS



The electrical service provided for the MC100 must include:

- 1.) A switch or circuit breaker to which the wiring harnesses from the workstation will be connected.
- 2.) This electrical disconnect must be mounted in close proximity to the desired location shown.
- 3.) The switch or circuit breaker must be marked as a disconnecting device.

APPENDIX – MC100 DRAWING

