

# JD600 Series

---

## CADAVER BODY LIFT WITH STRAPS



JD600 Mounted on a JD710



JD610 Mounted on a JD710

## REFERENCE MANUAL



21750 Coolidge Highway • Oak Park, MI 48237 USA  
+1 800-362-8491 • 248-291-2040 • Email: info@mopec.com

# **TABLE OF CONTENTS**

<b>INTRODUCTION</b>	<b>Page 3-4</b>
<b>UNCRATING</b>	<b>Page 5</b>
<b>ASSEMBLY</b>	<b>Page 6-7</b>
<b>CLEANING INSTRUCTIONS</b>	<b>Page 8</b>
<b>WARRANTY</b>	<b>Page 9</b>
<b>UNIT DRAWINGS</b>	<b>Page 10-11</b>



# **INTRODUCTION**

Congratulations on your purchase of Mopec's JD600 Series Cadaver Body Lift with Straps.

The Mopec Cadaver lift body straps are designed to be used in conjunction with the JD Series Cadaver Lifts. Simply slide the nylon straps under the body and attach to the top elevating bar for easy and effortless cadaver removal.

## **JD600 Cadaver Body Lift Bar with Straps**

**Support Bars:** 1-1/2", 11 gauge wall

**Nylon Straps:** 3", 54" basket

**Basket Style:** Rated at 500 lbs.

**Fork Saddle:** 14 gauge Stainless Steel

The JD600 is made of stainless steel with a #4 satin finish. All of the components used in the fabrication are stainless steel unless otherwise specified. All welds are a continuous type, smooth, free of burrs and brushed to remove any heat stains encountered during welding.



### **JD610 Bariatric Cadaver Body Lift Bar with Straps (Heavy Duty)**

**Fork Saddle:** 14 gauge mild steel

**Nylon Sling:** Five heavy duty, 2" wide x 60" - 72" L - eye to eye

**Support Bar:** One heavy duty 60" long

**Basket Style:** Rated at 1000 lbs.


The JD610 is made of mild steel tube with a powder coated finish. All welds are a continuous type, smooth, free of burrs and brushed to remove any rough edges encountered during welding.



Your comments and suggestions are always welcome, so call and let us know what you think of the JD600 Series Cadaver Body Lift

## **UNCRATING**

The first step to installing your new Mopec JD600 is to carefully inspect the exterior of the shipping container before opening. If the container is damaged or the product has sustained damage, immediately contact Mopec and the carrier. Never discard the shipping container even if it is damaged beyond recognition. Mopec will help assist in filing a claim for product repair and/or replacement. Carefully open the container and inspect the goods for concealed damage. If concealed damage is visible, (ie. broken welds, dented stainless, missing parts, etc.) follow through as noted above and contact us immediately. **Do not discard the shipping container. Damaged shipping containers are vital to settling claims.**



# **ASSEMBLY**

Your JD600 Cadaver Lift Bar with Straps includes the following components:

1 ea 1 1/2" 11Ga SQUARE STAINLESS STEEL TUBE x 60" *RM0155*

4 ea STRAP HOOKS *PF0636*

4 ea BOLT, ZINC PLATED 5/16-18 5" long *PB0261*

4 ea WING NUT, ZINC PLATED 5/16-18 *PB0190*

8 ea NUT - GALV, 5/16", PUSH RETAINER *PB0193*

8 ea WASHER - SS, 11/16"ID x 3/4"OD, 5/16" SCREW SIZE  
*PB0061*

2 ea BOLT - SS, 1/4-20 x 2"L, HEX FULLY THREADED  
*PB0014*

2 ea NUT - SS, 1/4-20, NYLON LOCK *PB0016*

2 ea FORK STRAP FLAT STAINLESS STEEL 1/4" X 1"  
TYPE 304/304L 8" *PF0733*

4 ea STRAP *PM0088*

# **ASSEMBLY**

Your JD610 High Capacity Cadaver Lift Bar with Straps includes the following components:

1 ea 3x3" 11Ga TUBE x 60"

14 ea STRAP HOOKS

5 ea STRAP - WEB SLING, 8 FT LENGTH, 4800 LB CAPACITY PM0045

8 ea WASHER - SS, 1/4", SPLIT LOCK PB0015

8 ea BOLT - SS, 1/4-20 x 1"L, HEX FULLY THREADED PB0200

2 ea KNOB-1/2-13 X 1-1/2, 2-1/2" DIA PM0506

2 ea STRAP WELDMENT PF5871

Once you have confirmed that you have all the required parts, take the parts to your cadaver lift.

Center the bar so the holes are on each side of the JD710 Cadaver Lift lifting arms.

**Note: The optimal placement would be in the center of the forks to disperse the weight, however, placement of the bar will depend on the cadaver being picked up with the lift. Follow Lift Guidelines for the load being picked up.**

# **CLEANING**

All stainless steel surfaces can be cleaned with soap and water, which will remove debris.

The stainless steel surfaces can be disinfected with a non caustic disinfectant. We suggest using BE045 Path Cloud or BE047 Bench Wipe for cleaning purposes. We recommend you **DO NOT USE** a bleach solution to clean your unit, bleach will eventually erode stainless steel if not thoroughly rinsed. **The use of chlorine bleach will VOID THE STAINLESS STEEL WARRANTY**

During the cleaning we suggest wiping the surface in the same direction as the satin finish which will help elevate dirt from the grain finish.

Scratches can be removed simply by utilizing a "non-metallic" abrasive pad and rubbing in the same direction as the satin finish.

Painted surfaces can be cleaned with a non-abrasive cleanser or soap and water and disinfected as directed by your facility.



# **WARRANTY**

## **MOPEC JD600 Series Cadaver Lift Bars**

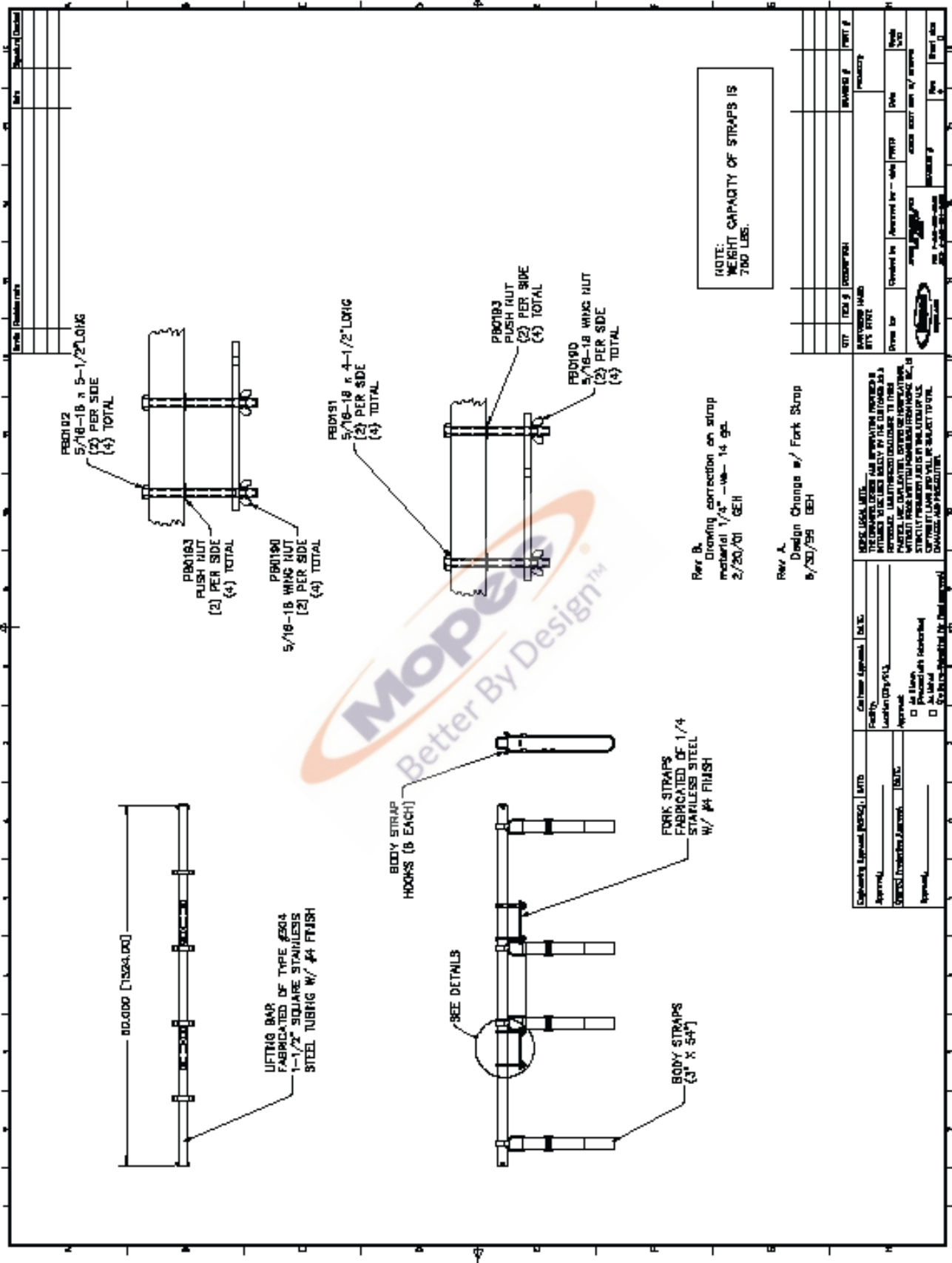
THE CADAVER BODY LIFT WITH STRAPS AND ALL PARTS THEREOF, MANUFACTURED BY MOPEC ARE WARRANTED TO OUR CUSTOMERS TO BE FREE FROM DEFECTS IN MATERIAL AND CONSTRUCTION WHEN SUBJECTED TO NORMAL USE AND SERVICE. THIS WARRANTY SHALL NOT APPLY TO ANY EQUIPMENT OR PART THEREOF, WHICH HAS BEEN SUBJECT TO ALTERATIONS, ACCIDENT, MISUSE, OR WHICH HAS BEEN USED MORE THAN ITS PUBLISHED CAPACITY.

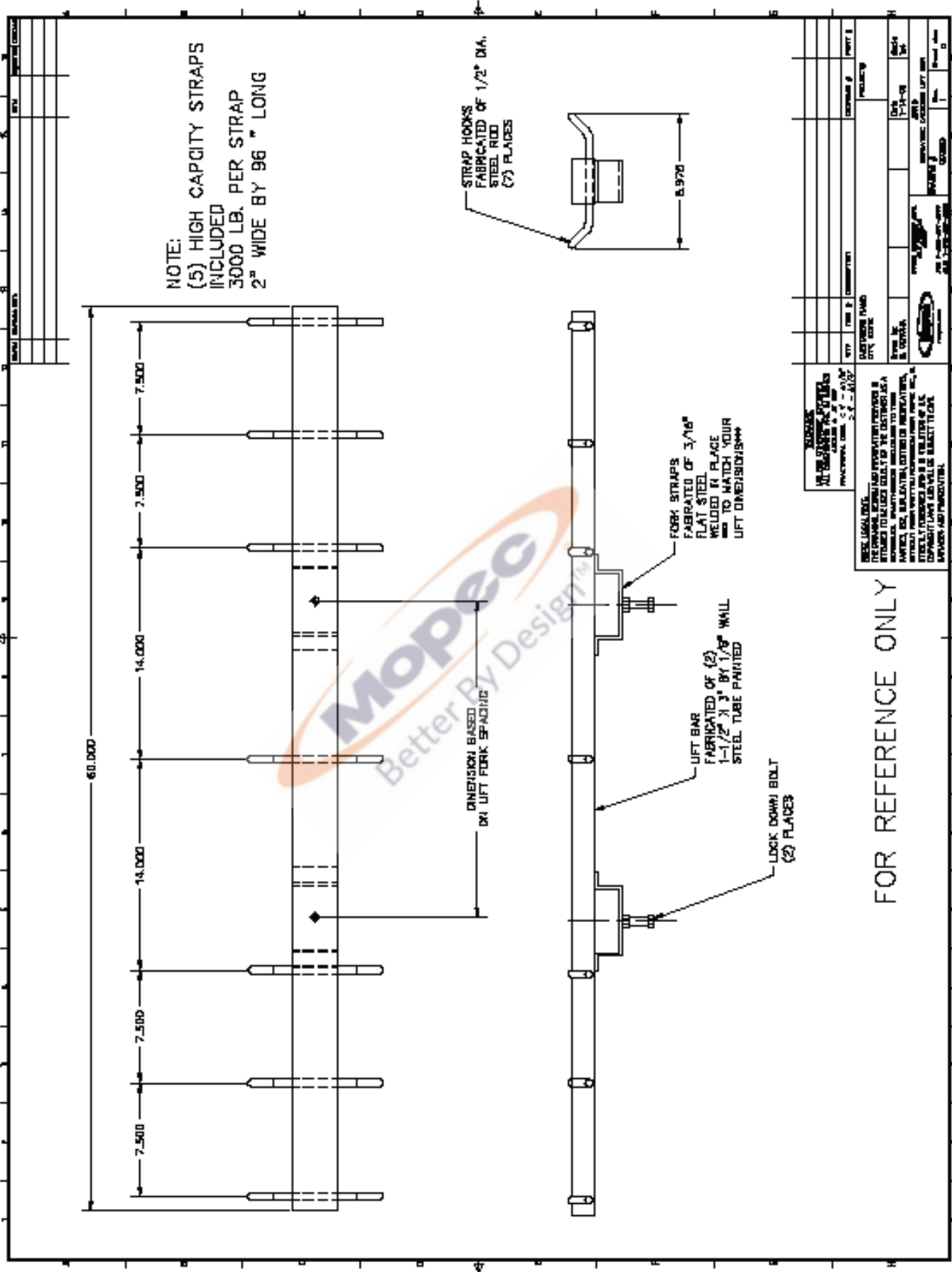
OUR OBLIGATION UNDER THIS WARRANTY IS LIMITED TO REPAIRING OR REPLACING, WITHOUT CHARGE ANY PART OR PARTS OF SAID EQUIPMENT WHICH PROVE DEFECTIVE AND WHICH OUR EXAMINATION SHALL DISCLOSE TO OUR SATISFACTION TO BE THUS DEFECTIVE. WE DO NOT ACCEPT RESPONSIBILITY FOR CONSEQUENTIAL DAMAGE RESULTING FROM SUCH DEFECTIVE PARTS. THE PERIOD OF WARRANTY ON MOPEC EQUIPMENT IS AS FOLLOWS:

**ALL EQUIPMENT:** EQUIPMENT IS WARRANTED IN ITS ENTIRETY FOR A PERIOD OF ONE (1) YEAR FROM THE DATE OF SALE. THIS WARRANTY INCLUDES PARTS AND LABOR FOR COVERED REPAIRS.

MOPEC WILL ACCEPT INCOMING DEFECTIVE PARTS, ONLY WHEN SHIPMENT IS PREPAID. THIS WARRANTY CONTRACT IS IN LIEU OF ALL OTHER WARRANTIES, AND RELEASES MOPEC OF ALL OTHER OBLIGATIONS OR LIABILITIES. IT NEITHER ASSUMES NOR AUTHORIZES ANY PERSON OR PERSONS TO ASSUME ANY OBLIGATION OTHER THAN THAT COVERED IN THIS WARRANTY.

MOPEC, 21750 COOLIDGE HWY. OAK PARK, MI 48237





<b>MOPEC</b> MOPEC DESIGN, INC. 10000 S. 100th Ave. Suite 100 Greenwood, CO 80042 Phone: 303.441.1111 Fax: 303.441.1112 Email: info@mopec.com		<b>PROJECT</b> PROJECT NO. DATE	
<b>CLIENT</b> CLIENT NAME CLIENT ADDRESS CLIENT CITY/STATE/ZIP CLIENT PHONE/FAX/EMAIL		<b>DESIGNER</b> DESIGNER NAME DESIGNER ADDRESS DESIGNER CITY/STATE/ZIP DESIGNER PHONE/FAX/EMAIL	
<b>DATE</b> DATE OF DESIGN DATE OF REVISION		<b>REVISIONS</b> REVISION NO. REVISION DESCRIPTION REVISION DATE	

FOR REFERENCE ONLY