

# JD405

---

## POWERED ELECTRIC CADAVER LIFT



Shown w Optional JD400

## REFERENCE MANUAL



21750 Coolidge Highway • Oak Park, MI 48237 USA  
+1 800-362-8491 • 248-291-2040 • Email: info@mopec.com

## **IMPORTANT INFORMATION**

**MODEL NO.:**

---

**SERIAL NO.:**

---

**DATE OF PURCHASE:**

---

**DATE OF INSTALLATION:**

---

**INSTALLATION NOTES:**

---

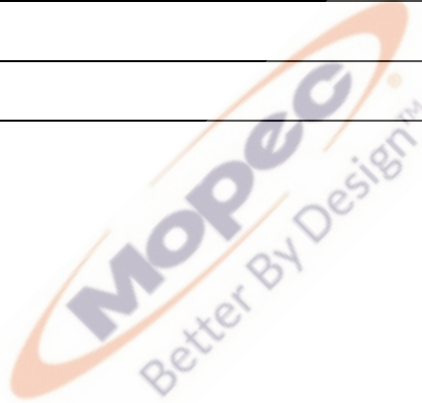
---

---

---

---

---



**SERVICE AND SUPPORT:**



21750 Coolidge Highway • Oak Park, MI 48237 USA  
+1 800-362-8491 • 248-291-2040 • Email: info@mopec.com

# TABLE OF CONTENTS

IMPORTANT INFORMATION	2
TABLE OF CONTENTS	3
INTRODUCTION	4
RECEIVING INSPECTION	4
START UP INSTRUCTIONS	5
SPECIFICATIONS	6
OPERATING THE LIFT	7
CHARGING THE BATTERY	8
MAINTENANCE	9
CLEANING	10
TROUBLE SHOOTING	11
WARRANTY	12
PARTS LIST	13 - 15



## **INTRODUCTION**

The JD405 Powered Electric Cadaver Lift is a free rolling rechargeable, electric-hydraulic lift utilized alone, with the JD400 Roller Pallet, JD500 Cadaver Tray Lift Bar or JD600 Lift Bar and yields an almost effortless means of handling a cadaver.

## **RECEIVING INSPECTION**

The first step in operating your electric cadaver lift is to carefully inspect the unit for any visible damage. If visible damage is observed, do not discard the crate it was shipped in, even if it's beyond use. Contact the carrier and Mopec immediately. We will assist you in filing a claim for product repair and/or replacement. Also, check to see if all the parts are packaged. Contact Mopec immediately if parts are missing:



## **START UP INSTRUCTIONS**

# **\*\*\*\*\* IMPORTANT \*\*\*\*\***

**Battery Charging:** Before operating the JD405 POWERED Electric Cadaver Lift for the first time, ensure the unit has been fully charged. You must connect the battery before charging. Remove the hydraulic shipping plug and replace with the breather cap provided.

With the lift in the lowest position check the following:

1. Remove plastic cover by removing the four hex bolts, two on top and one on each side (See figure one). Then disconnect the gauge and switch at the plastic connector. (See Figure 2).

*Figure 1*



*Figure 2*



2. Check for signs of damage, especially to the back cabinet that houses the battery, hydraulics and the electrical.
3. Remove plastic pipe plug from oil reservoir and screw in provided breather cap.
4. Connect negative (black) wire to negative battery terminal and tighten.
5. Check all electrical connections for tightness. Run unit up and down and check for any hydraulic leaks. DO NOT use the lift if there appears to be any damage.
6. Replace the plastic cover

## **SPECIFICATIONS**

### **Features:**

- Built-in Charger 12 V.D.C.
- 12 volt D.C. Hydraulic system
- Low Maintenance
- Remote Pendant Switch with magnetic back
- Powder Coat Finish
- Floor Lock

### **Technical Specifications:**

- Max Capacity: 1000 lbs
- 12 volt Battery
- Built in battery charging module
- Overall Width: 39" (smallest)
- Fork Length 40"
- Minimum Fork Height (Down Position): 0"

### **Lifting capacity**

**Load Capacity:** The load (including the tray, or container) that can be lifted to a given height at a given load center. Attempting to lift more than the load capacity can result in damage to the equipment or personal injury

**Load Center:** The distance from the backrest or vertical face of the fork to the center of an evenly distributed load

**Load Distribution:** Your Cadaver lift may tip over, in any direction if a load is shifted to the front or side unexpectedly

## **OPERATING THE LIFT**

***To ensure proper use, the following instructions must be adhered to:***

1. Load rating: The capacity of your unit is shown on the metal tag attached to the truck. It is based on the load center also shown on the tag.
2. Do not use your unit for loads exceeding the size of the platform or forks
3. Never move the unit unless the load is in the fully lowered position
4. The lift is intended for movement of loads and lifting loads to work position, not for movement of loads in a raised position
5. The floor lock (brake) is designed for minimizing movement of unit during loading and unloading from the lift. It is not to be used to control the truck speed when being moved. Ensure the floor lock is engaged before loading and unloading
6. Do not perform any repair work on the lift if there is a load on the forks or if the forks or platform are in the raised position.
7. All personnel must stand clear of the lift while lifting or lowering the forks or platform.
8. Do not stand, sit or climb on lift or use to lift personnel.
9. Do not put hands, feet or stand underneath the forks or platform when raised.
10. Do Not use on soft, uneven or unstable surfaces.
11. Custom alteration of units for specific functions not made at the factory void all warranties without exceptions. User made alterations may result in unsafe conditions during use of unit

### ***Operation***

**DO NOT attempt to move or operate the lift when charging the battery.**

1. Place power switch to "ON" position
2. To raise lift, push "UP" button on hand control pendant
3. To Lower lift, push "DOWN" button on hand control pendant
4. Whenever the control button is released the lift will stop
5. Authorized operators should read and understand all instructions, precautions and warnings. Improper use of the lift could result in personnel injury and/or damage to load and equipment:
  - Use lift on hard surfaces only.
  - Make sure load is evenly distributed, not loose or unstable, and as far back on forks as possible.

### **DO NOT PICK UP LOADS ON THE TIPS OF FORKS OR EDGE OF PLATFORM**

- Adjust forks to the maximum practical width to fit the attachments ordered. Use two forks, not one to pick up loads
- Make sure travel, work area and overhead are clear of obstructions before lifting or moving loads

#### JD405 POWERED ELECTRIC CADAVER LIFT

- Make sure floor lock is in firm contact with floor before lifting or lowering loads
- Turn unit “OFF” when not in use to prolong battery life.
- Stay away from inclines or sloping floors. To stop your loaded lift in an emergency, carefully guide the truck into a wall or other solid object. Watch for falling or shifting loads.
- Watch your hands and feet. Always be alert to the area around you and watch where you are walking. A foot or hand caught between the lift and a fixed object may be crushed or even cut off.
- Operate on smooth, dry floors. Do not operate on ramps or inclines. Do not run over objects on the floor.
- Keep your truck under control at ALL times. Move at a comfortable walking speed. Perform all truck movements smoothly and at a speed that will give you control and time to react in an emergency.
- While maneuvering the lift, keep both hands on the push bars, and make certain the wheels won't hit your legs or feet.

#### **Power Drive**

1. Place power switch on the handle to “ON” position
2. Pull Handle back, power drive is now ready for operation
3. Press throttle rocker slowly forward or reverse, to increase speed press throttle rocker further in the direction of travel desired
4. When moving in reverse, an emergency stop is required, press the red switch on top of the handle. The unit will automatically go into forward direction
5. To stop, release throttle rocker and place the handle in the upright position. Turn off power drive by turning the switch on the handle to “OFF”
6. NEVER leave the power drive unit on when unattended

#### **Lift Controls**

The controls on the electric powered cadaver lift are a push button pendant with a magnetic back. One button is for up and the other button is for down. Simply place the pendant onto any part of the frame.

### **CHARGING THE BATTERY**

1. Plug charging cord into a nominal 120V grounded circuit outlet. Charging will begin.
2. Battery is fully charged when the voltmeter indicates 12.0 -13.4 volts. If less than 12.0 volts, the battery is not fully charged
3. When battery is fully charged, unplug charging cord from the electrical outlet  
**DO NOT ATTEMPT TO MOVE OR OPERATE THE LIFT WHEN CHARGING THE BATTERY.**



## JD405 POWERED ELECTRIC CADAVER LIFT

4. The battery charger cord can be left plugged in for an indefinite period of time. The charger may be used anytime to extend the operating time of your battery. You do not have to wait until the battery is run down.
5. The voltmeter will indicate battery condition even when the charger cord is not plugged in.

## **MAINTENANCE**

### **Daily Maintenance Checks**

WARNING: Battery should be recharged on a regular basis. Repeated total discharge of battery can result in battery failure.

1. Battery
  - a. Check charge level
  - b. Check for corroded and loose terminals
  - c. Visually inspect for cracks or damage to battery casing
  - d. Check for loose battery tie downs
2. Charger
  - a. Inspect wire connections
  - b. Check power cord for nicks/damage to insulation casing
3. Hydraulic System
  - a. Inspect pump and cylinder for leaks
  - b. Check fluid level. Reservoir should be a minimum of half full with a good grade of hydraulic oil (Premco #32 recommended)  
**DO NOT USE HYDRAULIC BRAKE FLUID**
  - c. Check hydraulic fittings and hoses
  - d. Check piston rod for nicks/damage
4. Frame Assembly
  - a. Check Floor Lock
  - b. Check safety screen & guards
  - c. Check chain/roller assembly connections
  - d. Check for any worn or damaged parts

### **Monthly Maintenance Checks**

1. Battery
  - a. Clean battery compartment area
  - b. Clean Terminals
2. Hydraulic System
  - a. Clean and inspect hydraulic cylinder
  - b. Lubricate chain with a rust inhibitive "Chain Lube"
  - c. Check tension with lift at its lowest height. Chain should be tight enough that it does not come off roller assembly

JD405 POWERED ELECTRIC CADAVER LIFT

3. Frame Assembly
  - a. Clean and lubricate all roller bearings and cam followers
  - b. Clean and inspect all welds
  - c. Check wheels for wear and damage
  - d. Inspect nameplate for legibility

## **CLEANING INSTRUCTIONS**

All painted areas can be cleaned easily with BE047 Bench Spray and Wipe Decontaminating Cleaner.

Any stainless steel surfaces can be cleaned with soap and water to remove debris. The stainless steel surfaces can be disinfected with a non-caustic disinfectant.



## **TROUBLE SHOOTING**

### **Warranty Repairs**

If the unit does not work properly contact MOPEC at 800-362-8491 within one year of the purchase date.

WARNING: Charger (P/N 109150) is specifically designed for use with the battery (P/N 109102). Use of batteries other than factory specified may result in damage to charger and will void all warranties.

<b>TROUBLESHOOTING</b>		
<b>Problem</b>	<b>Check</b>	<b>Service Required</b>
Stacker does not operate. (Pump does not run)	Power switch is in "OFF" position.  Battery charger indicator lights. Voltmeter indicates 12 volts  Battery terminals and cables  Hydraulic oil level	Place in "ON" position.  Charge battery until yellow or green light is lit. Charge battery until yellow or green light is lit. Clean if corroded (white powder). Tighten terminal bolts. Fill oil reservoir to proper level.
Stacker does not lift to full height. (Pump runs)	Oil leaks	Tighten fittings. Replace hydraulic hose if required.
Stacker creeps down under load	Dirt in oil holding valve open	Raise stacker to full height then lower in stages, 6" to 12" at a time to its lowest point. Repeat this cycle several times until dirt is cleared and unit operates properly. Replace oil with clean hydraulic oil if contaminated.
	Oil leaks	Tighten fittings. Replace hydraulic hose if required. Replace "O" rings.
Pump runs continuously	Malfunction solenoid	Replace pump-motor solenoid.

**LIMITED WARRANTY**

## **WARRANTY**

MOPEC JD305 ELECTRIC CADAVER LIFT AND ALL PARTS THEREOF, MANUFACTURED BY MOPEC ARE WARRANTED TO OUR CUSTOMERS TO BE FREE FROM DEFECTS IN MATERIAL AND CONSTRUCTION WHEN SUBJECTED TO NORMAL USE AND SERVICE. THIS WARRANTY SHALL NOT APPLY TO ANY EQUIPMENT OR PART THEREOF, WHICH HAS BEEN SUBJECT TO ALTERATIONS, ACCIDENT, MISUSE, OR WHICH HAS BEEN USED MORE THAN ITS PUBLISHED CAPACITY.

OUR OBLIGATION UNDER THIS WARRANTY IS LIMITED TO REPAIRING OR REPLACING, WITHOUT CHARGE ANY PART OR PARTS OF SAID EQUIPMENT WHICH PROVE DEFECTIVE AND WHICH OUR EXAMINATION SHALL DISCLOSE TO OUR SATISFACTION TO BE THUS DEFECTIVE. WE DO NOT ACCEPT RESPONSIBILITY FOR CONSEQUENTIAL DAMAGE RESULTING FROM SUCH DEFECTIVE PARTS. THE PERIOD OF WARRANTY ON MOPEC EQUIPMENT IS AS FOLLOWS:

**ALL EQUIPMENT:** EQUIPMENT IS WARRANTED IN ITS ENTIRETY FOR A PERIOD OF ONE (1) YEAR FROM THE DATE OF SALE. THIS WARRANTY INCLUDES PARTS AND LABOR FOR COVERED REPAIRS.

MOPEC WILL ACCEPT INCOMING DEFECTIVE PARTS, ONLY WHEN SHIPMENT IS PREPAID. THIS WARRANTY CONTRACT IS IN LIEU OF ALL OTHER WARRANTIES, AND RELEASES MOPEC OF ALL OTHER OBLIGATIONS OR LIABILITIES. IT NEITHER ASSUMES NOR AUTHORIZES ANY PERSON OR PERSONS TO ASSUME ANY OBLIGATION OTHER THAN THAT COVERED IN THIS WARRANTY.

MOPEC, 21750 Coolidge Highway Oak Park, MI 48237

**PARTS LIST**

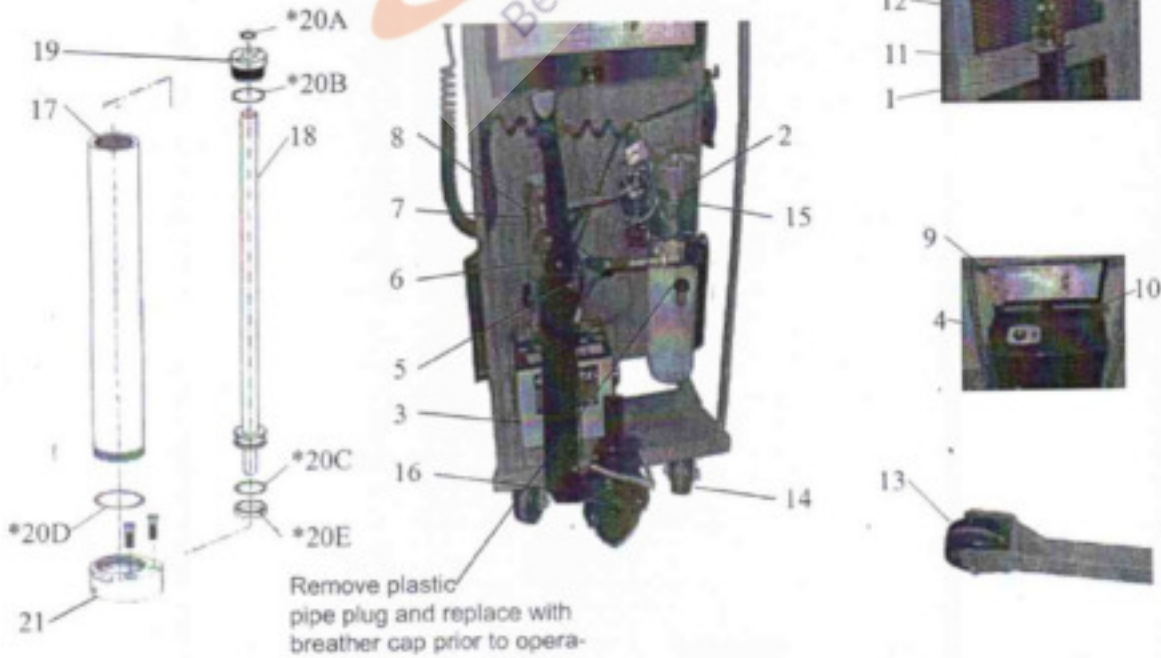
**POWER-LIFT STACKER PARTS LIST**

ITEM	QTY	DESCRIPTION	56"/60"LIFT	64"/68"LIFT	76"/80"LIFT
1	1	HYDRAULIC CYLINDER	051166	051164	051163
2	1	POWER UNIT	109101	109101	109101
3	1	BATTERY	109099	109099	109099
4	1	VOLTMETER	109104	109104	109104
5	1	BATTERY CABLE (NEG.)	052779	052779	052779
6	1	BATTERY CABLE (POS.)	125870	125870	125870
7	1	BATTERY CHARGER (110 V)	109150	109150	109150
8	1	BATTERY CHARGER (220 V)	109153	109153	109153
9	1	HYDRAULIC HOSE	125824	125824	125824
10	1	ASS'Y: REMOTE CONTROL	052726	052726	052726
11	1	SWITCH	109325	109325	109325
12	1	LIFT CHAIN ASSEMBLY	050771	050771	050772
13	2	ROLLER CARRIER ASS'Y	260143	260143	260143
14	2	WHEEL	053769	053769	053769
15	2	CASTER	054265	054265	054265
16	1	SOLENOID	109117	109117	109117
17	1	POWER DRIVE	170800	170800	170800

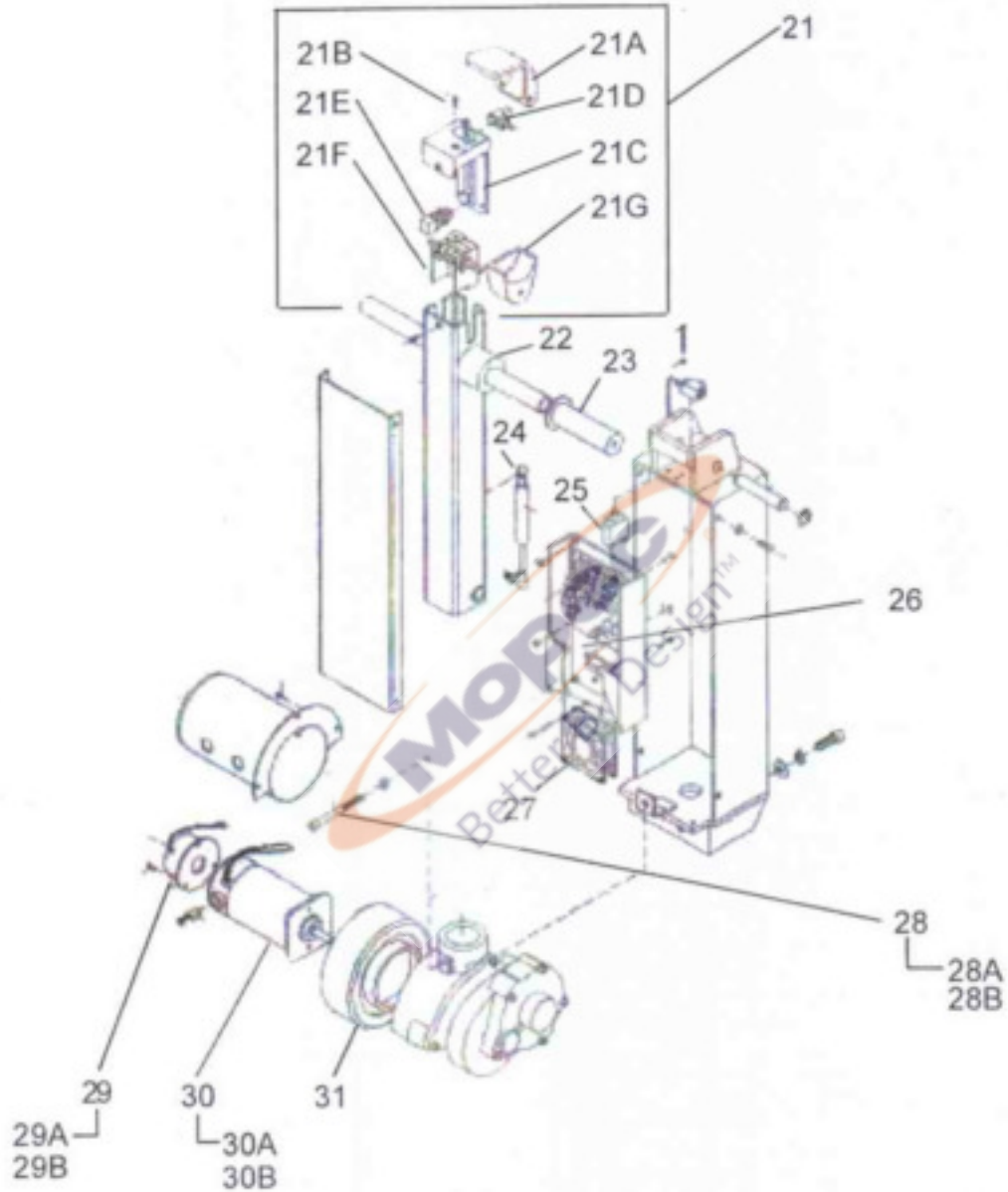
**HYDRAULIC CYLINDER PARTS LIST**

ITEM	QTY	DESCRIPTION	56"/60"LIFT	64"/68"LIFT	76"/80"LIFT
17	1	CYLINDER	051074	051073	051072
18	1	PISTON	051197	051196	051195
19	1	CYLINDER CAP	051198	051198	051198
20	1	SEAL KIT	220170	220170	220170
*20A		"O" RING	-----	-----	-----
*20B		"O" RING	-----	-----	-----
*20C		"O" RING	-----	-----	-----
*20D		"O" RING	-----	-----	-----
*20E		PISTON GUIDE RING	-----	-----	-----
21	1	BASE	051052	051052	051052

PARTS SHOWN WITH (\*), COMPRISE "SEAL KIT" P/N 22070.



JD405 POWERED ELECTRIC CADAVER LIFT



ITEM 16 POWER DRIVE



JD405 POWERED ELECTRIC CADAVER LIFT

POWER-LIFT STACKER PARTS LIST					
ITEM	QTY	DESCRIPTION	56"/60"LIFT	64"/68"LIFT	76"/80"LIFT
21	1	ASS'Y: HANDLE BUTTON	273065	273065	273065
*21A	1	STOP BUTTO	_____	_____	_____
*21B	1	VOLTAGE INDICATO	_____	_____	_____
*21C	1	BOTTON PLATE	_____	_____	_____
*21D	1	BRAKE BUTTON	_____	_____	_____
*21E	1	SWTCH	_____	_____	_____
*21F	1	THROTTLE	_____	_____	_____
*21G	1	KNOB	_____	_____	_____
<b>PARTS SHOWN WITH *, COMPRISE "ASS'Y: HANDLE BUTTON" P/N 273065</b>					
22	1	NYLON RING	273066	273066	273066
23	1	RUBBER GRIP	273067	273067	273067
24	1	AIR CYLINDER	273068	273068	273068
25	1	PROTECTOR	273069	273069	273069
26	1	PC BOARD	273101	273101	273101
27	1	FAN	273102	273102	273102
28	1	REPLACEMENT: NUT/SCREW	273104	273104	273104
**28A	1	NUT	_____	_____	_____
**28B	1	SCREW	_____	_____	_____
<b>PARTS SHOWN WITH **, COMPRISE "REPLACEMENT: NUT/SCREW" P/N 273104.</b>					
29	1	REPLACEMENT: BRAKE LINING AND SCREW	273105	273105	273105
***29A	1	BRAKE LINING	_____	_____	_____
***29B	1	SCREW	_____	_____	_____
<b>PARTS SHOWN WITH ***, COMPRISE "REPLACEMENT: BRAKE LINING/SCREW" P/N 273105.</b>					
30	1	REPLACEMENT: DRIVE MOTOR AND BRUSHES	273106	273106	273106
**** 30A	1	DRIVE MOTOR	_____	_____	_____
**** 30B	1	BRUSHES	_____	_____	_____
<b>PARTS SHOWN WITH ****, COMPRISE "REPLACEMENT: DRIVE MOTOR/BRUSHES" P/N 273106.</b>					
31	1	DRIVE WHEEL	273107	273107	273107