

# LD500

REFERENCE  
MANUAL

---

## VENTILATED TISSUE STORAGE CABINET



REFERENCE / USER  
MANUAL



21750 Coolidge Highway • Oak Park, MI 48237 USA  
+1 800-362-8491 • 248-291-2040 • Email: [info@mopec.com](mailto:info@mopec.com)

Rev 6-13-14 ©

**MODEL NO.:**

---

**SERIAL NO.:**

---

**DATE OF PURCHASE:**

---

**DATE OF INSTALLATION:**

---

**INSTALLATION NOTES:**

---

---

---

---

---

---

---

---



**SERVICE AND SUPPORT:**



21750 Coolidge Highway • Oak Park, MI 48237 USA  
+1 800-362-8491 • 248-291-2040 • Email: info@mopec.com

## **TABLE OF CONTENTS**

<b>INTRODUCTION</b>	<b>4</b>
<b>UNPACKING</b>	<b>5</b>
<b>AIR HANDLING SPECIFICATIONS AND REQUIREMENTS</b>	<b>6</b>
<b>CLEANING AND MAINTENANCE</b>	<b>7</b>
<b>WARRANTY</b>	<b>8</b>
<b>ISO CERTIFICATE</b>	<b>9</b>
<b>LD500 UNIT DRAWING</b>	<b>10</b>
<b>LD501 UNIT DRAWING</b>	<b>11</b>



## **INTRODUCTION**

The Mopec LD500 Ventilated Tissue Storage System is easy to adapt to most laboratory ventilation systems with an easily accessible 6" diameter duct stub located on the top of the cabinet. For convenience and functionality, the door to the cabinet is clear heavy-duty lexan and may be hinged on the left or right. Four leveling feet and an adjustable stainless steel floor section which allows convenient and easy installation.

A safe and highly functional method of tissue storage and transportation, the Ventilated Tissue Storage System is the practical answer to everyday storage needs. The system includes a portable shelving rack, container trays, transport cover and ventilated cabinet. With a portable rolling rack available, it eliminates the need to load and unload trays. For convenience, small containers may be placed in container trays with formalin neutralizing pads for transport and containment.

### ***Portable Shelving Features (LD501):***

- \* Fully adjustable shelves (1.5" intervals) allow for virtually any size specimen container
- \* Stable, vinyl coated steel racks
- \* Removable container trays with formalin neutralizing pads
- \* Large 5" heavy-duty swivel casters (2 locking)

### ***Portable Shelving Options:***

- \* Discreet Form Fitting Cover JZ011

LD501



LD501 w/JZ011



### ***Cabinet Features:***

- \* Top ventilation duct connects to existing laboratory ventilation system
- \* Heavy-duty 1/2" clear polycarbonate lexan door, may be hinged on the left or right
- \* Four leveling feet with an adjustable floor section
- \* All stainless steel for easy cleaning

## **UNPACKING**

- 1.) Carefully inspect the exterior of the shipping container before opening. If the crate is damaged and the product has sustained damage then immediately contact Mopec and the freight carrier. **Never discard the shipping container even if it is damaged beyond recognition.**
- 2.) The receiver must note any suspected damage on the bill of lading and sign it. Mopec will help assist in filing a claim for product repair and/or replacement.
- 3.) Carefully open the containers and inspect the goods for concealed damage. If concealed damage is noticed (i.e. Broken welds, dented stainless, scratches, etc.) Follow through as noted above, and again do not discard the shipping material, they are important in settling claims.



**Mopec LD500 Vented Storage Cabinet**  
**Air Handling Requirements**

**Vented Storage Cabinet Air Design Parameters:**

The Vented Storage Cabinets are designed to help contain fumes within the cabinet. The cabinet is provided with perforated shelves such that air passes between each storage level. The airflow requirements are minimal with the intention of creating a negative pressure within the cabinet to help eliminate any fumes from escaping. Air is drawn through a 6" diameter collar centrally located in the top of the cabinet. This 6" diameter collar is tied into the building ventilation system with a suggested 100 C.F.M. to 125 C.F.M. air flow requirement.

Flex or rigid duct may be used. Flex duct must meet individual requirements and/or local codes.

The above design parameters and airflow requirements are based on stringent ventilation requirements and ideal conditions. Personalized conditions and practices may warrant an increase and/or decrease of the ventilation. Although the Mopec "Vented Storage Cabinet" can be the answer to fume exposure, Mopec cannot assume responsibility of exposure.

## **CLEANING AND MAINTENANCE**

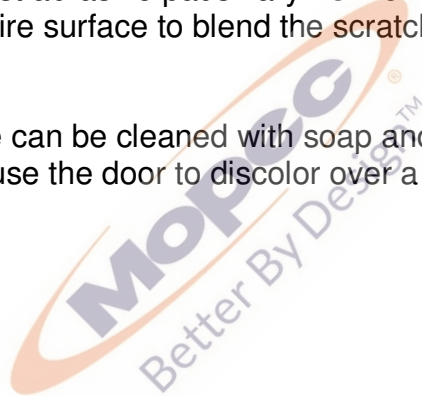
All stainless steel surfaces can be cleaned with soap and water, which will remove debris.

The stainless steel surfaces can be disinfected with a non-caustic disinfectant. **We highly recommend you DO NOT USE a bleach solution to clean your unit. Bleach will eventually erode stainless steel if not thoroughly rinsed. The use of chlorine bleach will VOID THE STAINLESS STEEL WARRANTY.**

During the cleaning we suggest wiping the surface in the same direction as the satin finish; this will help elevate dirt from the grain finish. We suggest using BE047 CloudPath or BE047 Bench Wipe for cleaning purposes.

Scratches in the stainless steel can be removed simply by using a "non-metallic" abrasive pad. Since most abrasive pads vary from one supply to another, we suggest rubbing the entire surface to blend the scratch and blend the balance of the surface.

The Lexan door surface can be cleaned with soap and water. Using any type of window cleaner can cause the door to discolor over a period of time.



## **WARRANTY**

### **MOPEC LD500 VENTILATED STORAGE CABINET**

THE AUTOPSY TABLE EQUIPMENT AND ALL PARTS THEREOF, MANUFACTURED BY MOPEC IS WARRANTED TO OUR CUSTOMERS TO BE FREE FROM DEFECTS IN MATERIAL AND CONSTRUCTION WHEN SUBJECTED TO NORMAL USE AND SERVICE. THIS WARRANTY SHALL NOT APPLY TO ANY EQUIPMENT OR PART THEREOF, WHICH HAS BEEN SUBJECT TO ALTERATIONS, ACCIDENT, MISUSE, OR WHICH HAS BEEN USED MORE THAN ITS PUBLISHED CAPACITY.

MOPEC'S OBLIGATION UNDER THIS WARRANTY IS LIMITED TO REPAIRING OR REPLACING, WITHOUT CHARGE ANY PART OR PARTS OF SAID EQUIPMENT WHICH PROVE DEFECTIVE AND WHICH OUR EXAMINATION SHALL DISCLOSE TO OUR SATISFACTION TO BE THUS DEFECTIVE. WE DO NOT ACCEPT RESPONSIBILITY FOR CONSEQUENTIAL DAMAGE RESULTING FROM SUCH DEFECTIVE PARTS. THE PERIOD OF WARRANTY ON MOPEC EQUIPMENT IS AS FOLLOWS:

**ALL EQUIPMENT:** EQUIPMENT IS WARRANTED IN ITS ENTIRETY FOR A PERIOD OF ONE (1) YEAR FROM THE DATE OF SALE. THIS WARRANTY INCLUDES PARTS AND LABOR FOR COVERED REPAIRS.

MOPEC WILL ACCEPT INCOMING DEFECTIVE PARTS, ONLY WHEN SHIPMENT IS PREPAID. THIS WARRANTY CONTRACT IS IN LIEU OF ALL OTHER WARRANTIES, AND RELEASES MOPEC OF ALL OTHER OBLIGATIONS OR LIABILITIES. IT NEITHER ASSUMES NOR AUTHORIZES ANY PERSON OR PERSONS TO ASSUME ANY OBLIGATION OTHER THAN THAT COVERED IN THIS WARRANTY.





# CERTIFICATE OF REGISTRATION

This is to certify that

## **MP Acquisition, LLC DBA Mopec**

21750 Coolidge Highway, Oak Park, Michigan 48237 USA

operates a

## **Quality Management System**

which complies with the requirements of

## **ISO 9001:2008**

for the following scope of registration

**The registration covers the quality management system for the design, engineering, manufacturing and installation of equipment and distribution of supplies for morgue, pathology, histology and necropsy applications.**

Certificate No.: CERT-0078089  
File No.: 1068177  
Issue Date: March 11, 2014

Original Certification Date: April 9, 2008  
Current Certification Date: April 7, 2014  
Certificate Expiry Date: April 6, 2017

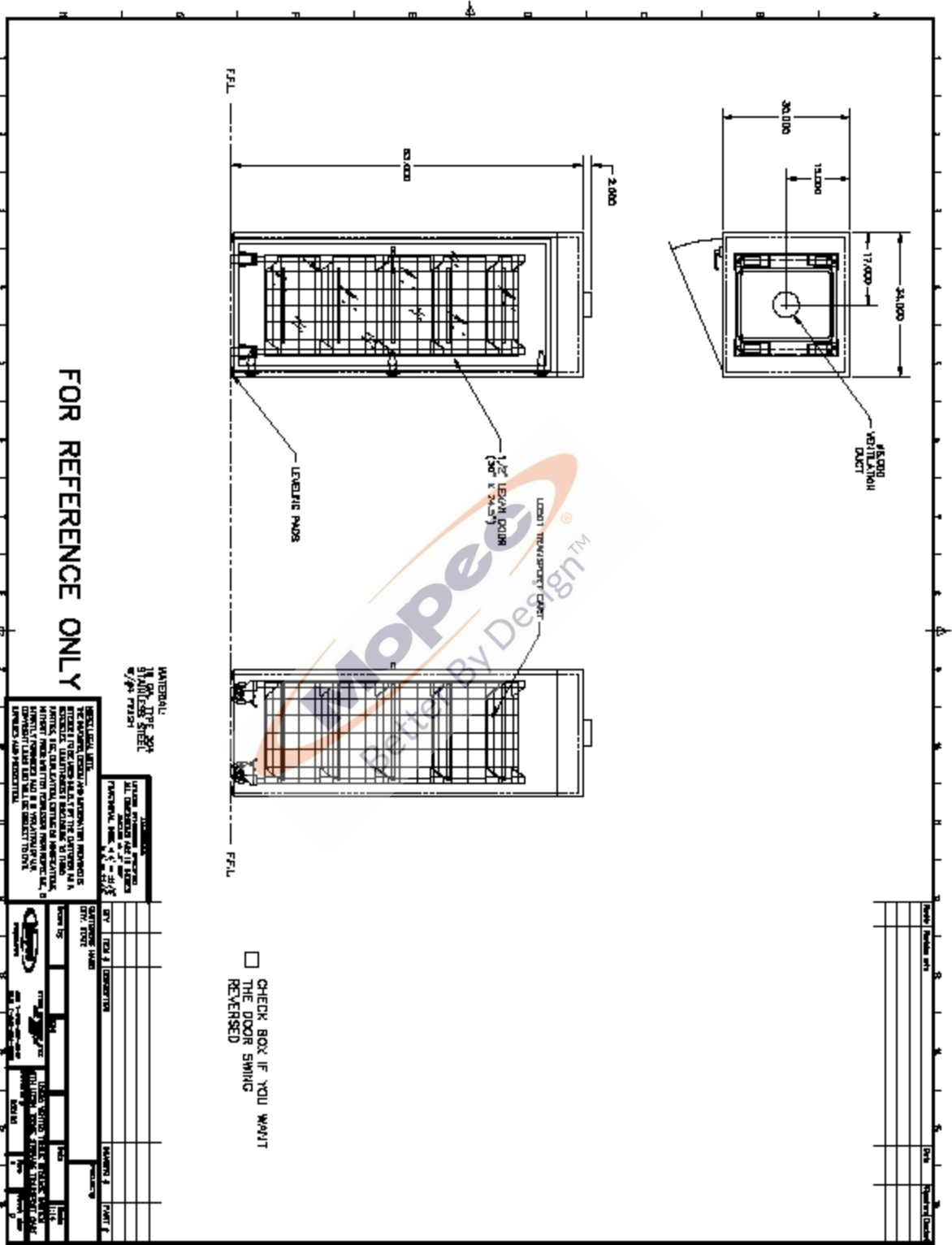
Chris Jouppi  
President,  
QMI-SAI Canada Limited

Samer Chaouk  
Head of Policy, Risk and Certification



ISO 9001





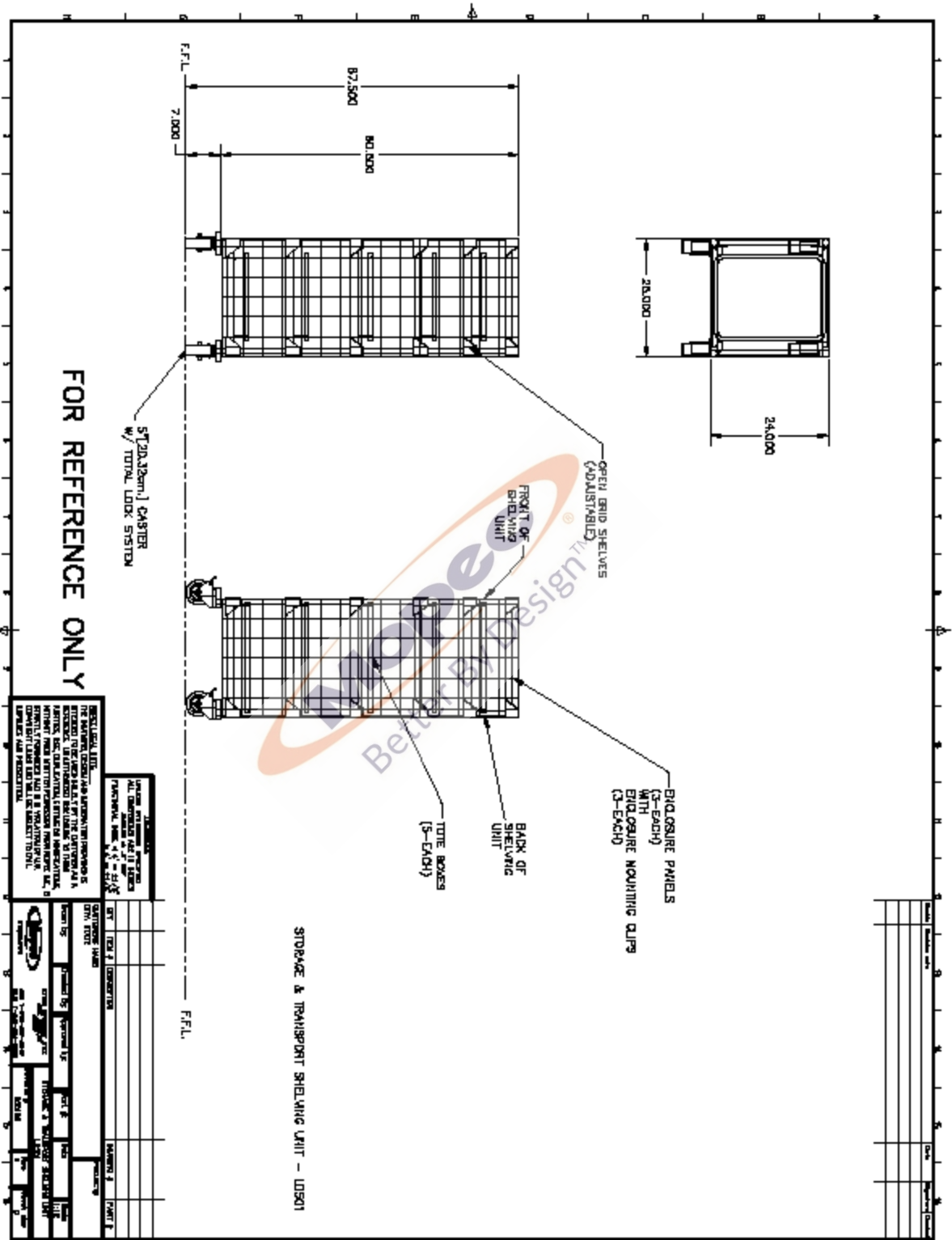
FOR REFERENCE ONLY

MATERIAL:  
 1.5mm ALU PER. SHEET  
 2.5mm ALU PER. SHEET  
 3.0mm ALU PER. SHEET

**IMPORTANT NOTE:**  
 THE MANUFACTURER'S WARRANTY DOES NOT COVER THE UNIT IF IT IS USED FOR ANY OTHER PURPOSE THAN THAT FOR WHICH IT WAS DESIGNED. THE USER MUST READ THE USER MANUAL AND FOLLOW THE INSTRUCTIONS CAREFULLY. THE USER MUST ALSO FOLLOW THE LOCAL REGULATIONS AND STANDARDS. THE USER MUST ALSO FOLLOW THE LOCAL REGULATIONS AND STANDARDS. THE USER MUST ALSO FOLLOW THE LOCAL REGULATIONS AND STANDARDS.

CHECK BOX IF YOU WANT THE DOOR SWING REVERSED

NO.	DESCRIPTION	QTY	UNIT	REMARKS
1	FRONT PANEL	1	PC	
2	BACK PANEL	1	PC	
3	DOOR	1	PC	
4	LED LIGHT	1	PC	
5	LEVERAGE PAD	2	PC	
6	DOWN LIGHT	1	PC	
7	VENTILATION GRILL	1	PC	
8	FRONT LEG	4	PC	
9	BACK LEG	4	PC	
10	DOOR LEG	4	PC	
11	FRONT RAIL	1	PC	
12	BACK RAIL	1	PC	
13	DOOR RAIL	1	PC	
14	FRONT RAIL	1	PC	
15	BACK RAIL	1	PC	
16	DOOR RAIL	1	PC	
17	FRONT RAIL	1	PC	
18	BACK RAIL	1	PC	
19	DOOR RAIL	1	PC	
20	FRONT RAIL	1	PC	
21	BACK RAIL	1	PC	
22	DOOR RAIL	1	PC	
23	FRONT RAIL	1	PC	
24	BACK RAIL	1	PC	
25	DOOR RAIL	1	PC	
26	FRONT RAIL	1	PC	
27	BACK RAIL	1	PC	
28	DOOR RAIL	1	PC	
29	FRONT RAIL	1	PC	
30	BACK RAIL	1	PC	
31	DOOR RAIL	1	PC	
32	FRONT RAIL	1	PC	
33	BACK RAIL	1	PC	
34	DOOR RAIL	1	PC	
35	FRONT RAIL	1	PC	
36	BACK RAIL	1	PC	
37	DOOR RAIL	1	PC	
38	FRONT RAIL	1	PC	
39	BACK RAIL	1	PC	
40	DOOR RAIL	1	PC	
41	FRONT RAIL	1	PC	
42	BACK RAIL	1	PC	
43	DOOR RAIL	1	PC	
44	FRONT RAIL	1	PC	
45	BACK RAIL	1	PC	
46	DOOR RAIL	1	PC	
47	FRONT RAIL	1	PC	
48	BACK RAIL	1	PC	
49	DOOR RAIL	1	PC	
50	FRONT RAIL	1	PC	
51	BACK RAIL	1	PC	
52	DOOR RAIL	1	PC	
53	FRONT RAIL	1	PC	
54	BACK RAIL	1	PC	
55	DOOR RAIL	1	PC	
56	FRONT RAIL	1	PC	
57	BACK RAIL	1	PC	
58	DOOR RAIL	1	PC	
59	FRONT RAIL	1	PC	
60	BACK RAIL	1	PC	
61	DOOR RAIL	1	PC	
62	FRONT RAIL	1	PC	
63	BACK RAIL	1	PC	
64	DOOR RAIL	1	PC	
65	FRONT RAIL	1	PC	
66	BACK RAIL	1	PC	
67	DOOR RAIL	1	PC	
68	FRONT RAIL	1	PC	
69	BACK RAIL	1	PC	
70	DOOR RAIL	1	PC	
71	FRONT RAIL	1	PC	
72	BACK RAIL	1	PC	
73	DOOR RAIL	1	PC	
74	FRONT RAIL	1	PC	
75	BACK RAIL	1	PC	
76	DOOR RAIL	1	PC	
77	FRONT RAIL	1	PC	
78	BACK RAIL	1	PC	
79	DOOR RAIL	1	PC	
80	FRONT RAIL	1	PC	
81	BACK RAIL	1	PC	
82	DOOR RAIL	1	PC	
83	FRONT RAIL	1	PC	
84	BACK RAIL	1	PC	
85	DOOR RAIL	1	PC	
86	FRONT RAIL	1	PC	
87	BACK RAIL	1	PC	
88	DOOR RAIL	1	PC	
89	FRONT RAIL	1	PC	
90	BACK RAIL	1	PC	
91	DOOR RAIL	1	PC	
92	FRONT RAIL	1	PC	
93	BACK RAIL	1	PC	
94	DOOR RAIL	1	PC	
95	FRONT RAIL	1	PC	
96	BACK RAIL	1	PC	
97	DOOR RAIL	1	PC	
98	FRONT RAIL	1	PC	
99	BACK RAIL	1	PC	
100	DOOR RAIL	1	PC	



FOR REFERENCE ONLY

**WARRANTY STATEMENT**  
 ALL DIMENSIONS ARE IN MILLIMETERS UNLESS OTHERWISE SPECIFIED.  
 THE DRAWING IS THE PROPERTY OF MOPEC. IT IS TO BE USED ONLY FOR THE PROJECT AND SITE SPECIFICALLY IDENTIFIED THEREON. MOPEC SHALL NOT BE RESPONSIBLE FOR ANY DAMAGE TO OR LOSS OF ANY PROPERTY OR PERSONS ARISING FROM THE USE OF THIS DRAWING OR FROM ANY INFORMATION DERIVED THEREFROM. MOPEC SHALL NOT BE RESPONSIBLE FOR ANY DAMAGE TO OR LOSS OF ANY PROPERTY OR PERSONS ARISING FROM THE USE OF THIS DRAWING OR FROM ANY INFORMATION DERIVED THEREFROM.

NO.	REVISION	DATE	BY	CHKD.	APP'D.