

# DC SERIES

---

## *AUTOPSY CARTS/TABLE - ELEVATING*



### REFERENCE MANUAL

Rev 6-15-14 ©



21750 Coolidge Highway • Oak Park, MI 48237 USA  
+1 800-362-8491 • 248-291-2040 • Email: [info@mopec.com](mailto:info@mopec.com)

**IMPORTANT INFORMATION**

**MODEL NO.:**

---

**SERIAL NO.:**

---

**DATE OF PURCHASE:**

---

**DATE OF INSTALLATION:**

---

**INSTALLATION NOTES:**

---

---

---

---

---

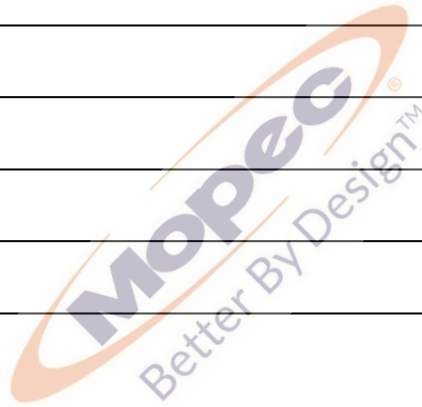
---

---

---

---

---



**SERVICE AND SUPPORT:**



21750 Coolidge Highway • Oak Park, MI 48237 USA  
+1 800-362-8491 • 248-291-2040 • Email: info@mopec.com

## **TABLE OF CONTENTS**

<b>INTRODUCTION</b>	<b>4</b>
<b>CUSTOMER AND TECHNICAL SUPPORT</b>	<b>5</b>
<b>UNPACKING</b>	<b>6</b>
<b>OPERATION</b>	<b>7</b>
<b>CLEANING AND MAINTENANCE</b>	<b>8</b>
<b>STANDARD FEATURES</b>	<b>9</b>
<b>OPTIONAL FEATURES</b>	<b>10</b>
<b>WARRANTY</b>	<b>11</b>
<b>ISO CERTIFICATE</b>	<b>12</b>
<b>UNIT DRAWINGS</b>	
<b>DC000</b>	<b>13</b>
<b>DC100</b>	<b>14</b>
<b>DC300</b>	<b>15</b>
<b>DC600</b>	<b>16</b>
<b>DC800</b>	<b>17</b>
<b>DC850</b>	<b>18</b>



## **INTRODUCTION**

This autopsy cart/table is used in conjunction with the wall mounted autopsy sink or as a simple viewing stretcher. The cart elevates and / or tilts at both ends and is capable of a variety of positions. Dual side mounted foot controls allow for an effortless elevating on either end. Dual locking levers lock all wheels simultaneously from either end. The tops are removable so high volume storage racks can be utilized. Removal can be accomplished with either a motorized or a manual fork type lift.

- **DC000 Autopsy Cart Frame**
- **DC100 Autopsy Cart W/Top (Stainless Steel)** – Heavy- duty stainless construction. (DC000 + GA100 = DC100)
- **DC200 Autopsy Cart W/Top (Poly Inner Liner)** – Mopec's X-Ray autopsy cart top is constructed with a solid structural stainless steel frame and a unique polyethylene insert that can be x-rayed through with virtually no shadowing.  
(DC000 + GA200 = DC200)
- **DC300 Autopsy Cart W/Top (Inner Trough)** – Heavy-Duty stainless steel construction with inner drain trough.  
(DC000 + GA300 = DC300)
- **DC600 Autopsy Cart W/Top (Inner Trough)** – Fiberglass x-ray top with cassette slide. Dimensions: 81" L x 32" W, Heavy duty construction with drain hole, Contoured top and trough design produce an excellent fluid drainage, Solid gray color and a stainless steel frame  
(DC000 + GA600 = DC600)
- **DC800 Autopsy Cart W/Top (Inner Trough)** – Heavy-Duty stainless steel construction with inner drain trough.  
(DC000 + GA300 = DC300)
- **DC850 Autopsy Cart W/Top (Inner Trough)** – Heavy-Duty stainless steel construction with inner drain trough.  
(DC000 + GA300 = DC300)



## **CUSTOMER AND TECHNICAL SUPPORT**

All Mopec staff members are Customer Service experts. We believe in providing nothing but the best possible service for all our customers. Our Technical Support group includes everyone from our design engineers to members of our production group. All are dedicated to providing comprehensive and courteous support to all Mopec customers.

The following information is included to help our customers communicate with Customer and Technical Support at Mopec.

### **Mopec**

21750 COOLIDGE HWY.  
OAK PARK, MICHIGAN 48237  
TOLL FREE 800.362.8491  
248.291.2040 PH. 248.291.2050 FX



## **UNPACKING**

- 1.) Carefully inspect the exterior of the shipping container before opening. If the crate is damaged and the product has sustained damage then immediately contact Mopec and the freight carrier. **Never discard the shipping container even if it is damaged beyond recognition.**
- 2.) The receiver must note any suspected damage on the bill of lading and sign it. Mopec will help assist in filing a claim for product repair and/or replacement.
- 3.) Carefully open the containers and inspect the goods for concealed damage. If concealed damage is noticed (i.e. Broken welds, dented stainless, scratches, etc.) Follow through as noted above, and again do not discard the shipping material, they are important in settling claims.



## **OPERATION**

### **1. MOVING THE CADAVER FROM THE HOSPITAL BED TO THE TRANSPORT CART HAS NEVER BEEN EASIER:**

- *Dual side-mounted foot controls allow the technician to effortlessly elevate the transfer tray to the height of the bed without stooping or bending.*
- *Specially designed contoured edging makes transferring the body from the hospital bed to the JA600 more efficient.*

### **2. TRANSPORTING WITH CONFIDENCE, SAFETY, AND DISCRETION:**

- *Total-Lock wheel locking and aligning mechanisms along with heavy-duty 8-inch diameter casters makes pushing and steering the JA600 easy and constantly in control.*
- *The JA600's form-fitting, opaque cover over a sturdy stainless steel frame ensures the utmost in discretion and consideration for the staff, family, and hospital visitors. Special rugged bumpers provide heavy-duty impact resistance.*

### **3. LOADED WITH PRACTICAL FEATURES:**

- *Wider body platform makes dealing with heavier bodies easier, yet the cart easily passes through doors and hallways.*
- *Contoured perimeter edges ensure retention and control of fluids.*

**NOTE: The hydraulics should not be used until the cart is at room temperature if stored in a cooler or location that is not consistent with the operating temperature of the environment.**



## **CLEANING AND MAINTENANCE**

### **DISINFECTING AND MAINTAINING STAINLESS STEEL SURFACES**

All stainless steel surfaces can be cleaned with soap and water, which will remove debris.

The stainless steel surfaces can be disinfected with a non caustic disinfectant. We suggest using BE045 Path Cloud or BE047 Bench Wipe for cleaning purposes.

We recommend you **DO NOT USE** a bleach solution to clean your unit, bleach will eventually erode stainless steel if not thoroughly rinsed. **The use of chlorine bleach will VOID THE STAINLESS STEEL WARRANTY**

During the cleaning we suggest wiping the surface in the same direction as the satin finish which will help elevate dirt from the grain finish.

Scratches can be removed simply by utilizing a "non-metallic" abrasive pad and rubbing in the same direction as the satin finish.

Since most abrasive pads vary from one supply to another, we suggest rubbing the entire surface to blend the scratch and blend the balance of the surface.

## **STANDARD FEATURES**

**Removable Cart Top:** The cart top is fabricated of 14 Ga.type stainless steel with a #4 satin finish. The top is 32" wide x 80 ½" long with a 1 ½" profile and a return flange along a 2" ledge around the full perimeter. The top is recessed and dimpled towards the drain hole. A drain plug is provided with a chain to prevent loss. All exposed welds are ground smooth and grained to match a # 4 satin finish.

**All Stainless Steel Construction.**

**Foot Controls:** Dual side-mounted

The chassis is constructed of high impact PVC with twin pedestal hydraulics.

**Casters:** Heavy-duty 8" diameter with locking mechanism. Dual end wheel brake activator built-in.

**Welding:** TIG type welding utilizing only stainless steel as a filler media. All welds fillets are approximately ¼" diameter. All welds are brushed clean removing any welds burns and burrs for a clean sanitary application.

**The Autopsy Cart/ Table fully lowered measures 32".**

**The Autopsy Cart/ Table fully elevated measures 45 ¾"**

## **OPTIONAL FEATURES**

- **GA100 Autopsy Cart Top (Stainless Steel)** – Heavy-duty stainless construction. (DC000 + GA100 = DC100)
- **GA200 Autopsy Cart Top (Poly Inner Liner)** – Mopec's X-Ray autopsy cart top is constructed with a solid structural stainless steel frame and a unique polyethylene insert that can be x-rayed through with virtually no shadowing. (DC000 + GA200 = DC200)
- **GA300 Autopsy Cart Top (Inner Trough)** – Heavy-Duty stainless steel construction with inner drain trough. (DC000 + GA300 = DC300)
- **GA600 Autopsy X-Ray Cart Top (Blue)** – Fiberglass x-ray top with cassette slide. Dimensions: 81" L x 32" W, Heavy duty construction with drain hole, Contoured top and trough design produce an excellent fluid drainage, Solid gray color and a stainless steel frame. Includes Plug and Chain (DC000 + GA600 = DC600)
- **GA800 Autopsy X-Ray Cart Top (Blue)** – Heavy-Duty Vacuum Formed construction with inner drain trough. Includes Plug and Chain and Chain and cassette slide (DC000 + GA800 = DC800)
- **GA850 Autopsy X-Ray Cart Top (Beige)** – Heavy-Duty Vacuum Formed construction with inner drain trough. Includes Plug and Chain and cassette slide (DC000 + GA800 = DC850)
  
- **Head Rest**

## WARRANTY

### **MOPEC DC SERIES AUTOPSY CART**

THE DC SERIES CART AND ALL PARTS THEREOF, MANUFACTURED BY MOPEC IS WARRANTED TO OUR CUSTOMERS TO BE FREE FROM DEFECTS IN MATERIAL AND CONSTRUCTION WHEN SUBJECTED TO NORMAL USE AND SERVICE. THIS WARRANTY SHALL NOT APPLY TO ANY EQUIPMENT OR PART THEREOF, WHICH HAS BEEN SUBJECT TO ALTERATIONS, ACCIDENT, MISUSE, OR WHICH HAS BEEN USED MORE THAN ITS PUBLISHED CAPACITY.

MOPEC'S OBLIGATION UNDER THIS WARRANTY IS LIMITED TO REPAIRING OR REPLACING, WITHOUT CHARGE ANY PART OR PARTS OF SAID EQUIPMENT WHICH PROVE DEFECTIVE AND WHICH OUR EXAMINATION SHALL DISCLOSE TO OUR SATISFACTION TO BE THUS DEFECTIVE. WE DO NOT ACCEPT RESPONSIBILITY FOR CONSEQUENTIAL DAMAGE RESULTING FROM SUCH DEFECTIVE PARTS. THE PERIOD OF WARRANTY ON MOPEC EQUIPMENT IS AS FOLLOWS:

**ALL EQUIPMENT:** EQUIPMENT IS WARRANTED IN ITS ENTIRETY FOR A PERIOD OF ONE (1) YEAR FROM THE DATE OF SALE. THIS WARRANTY INCLUDES PARTS AND LABOR FOR COVERED REPAIRS.

MOPEC WILL ACCEPT INCOMING DEFECTIVE PARTS, ONLY WHEN SHIPMENT IS PREPAID. THIS WARRANTY CONTRACT IS IN LIEU OF ALL OTHER WARRANTIES, AND RELEASES MOPEC OF ALL OTHER OBLIGATIONS OR LIABILITIES. IT NEITHER ASSUMES NOR AUTHORIZES ANY PERSON OR PERSONS TO ASSUME ANY OBLIGATION OTHER THAN THAT COVERED IN THIS WARRANTY.

MOPEC  
21750 COOLIDGE HWY.  
OAK PARK, MICHIGAN 48237  
TOLL FREE 800.362.8491  
248.291.2040 PH. 248.291.2050 FX



# CERTIFICATE OF REGISTRATION

This is to certify that

## **MP Acquisition, LLC DBA Mopec**

21750 Coolidge Highway, Oak Park, Michigan 48237 USA

operates a

## **Quality Management System**

which complies with the requirements of

## **ISO 9001:2008**

for the following scope of registration

**The registration covers the quality management system for the design, engineering, manufacturing and installation of equipment and distribution of supplies for morgue, pathology, histology and necropsy applications.**

Certificate No.: CERT-0078089  
File No.: 1068177  
Issue Date: March 11, 2014

Original Certification Date: April 9, 2008  
Current Certification Date: April 7, 2014  
Certificate Expiry Date: April 6, 2017

Chris Jouppi  
President,  
QMI-SAI Canada Limited

Samer Chaouk  
Head of Policy, Risk and Certification

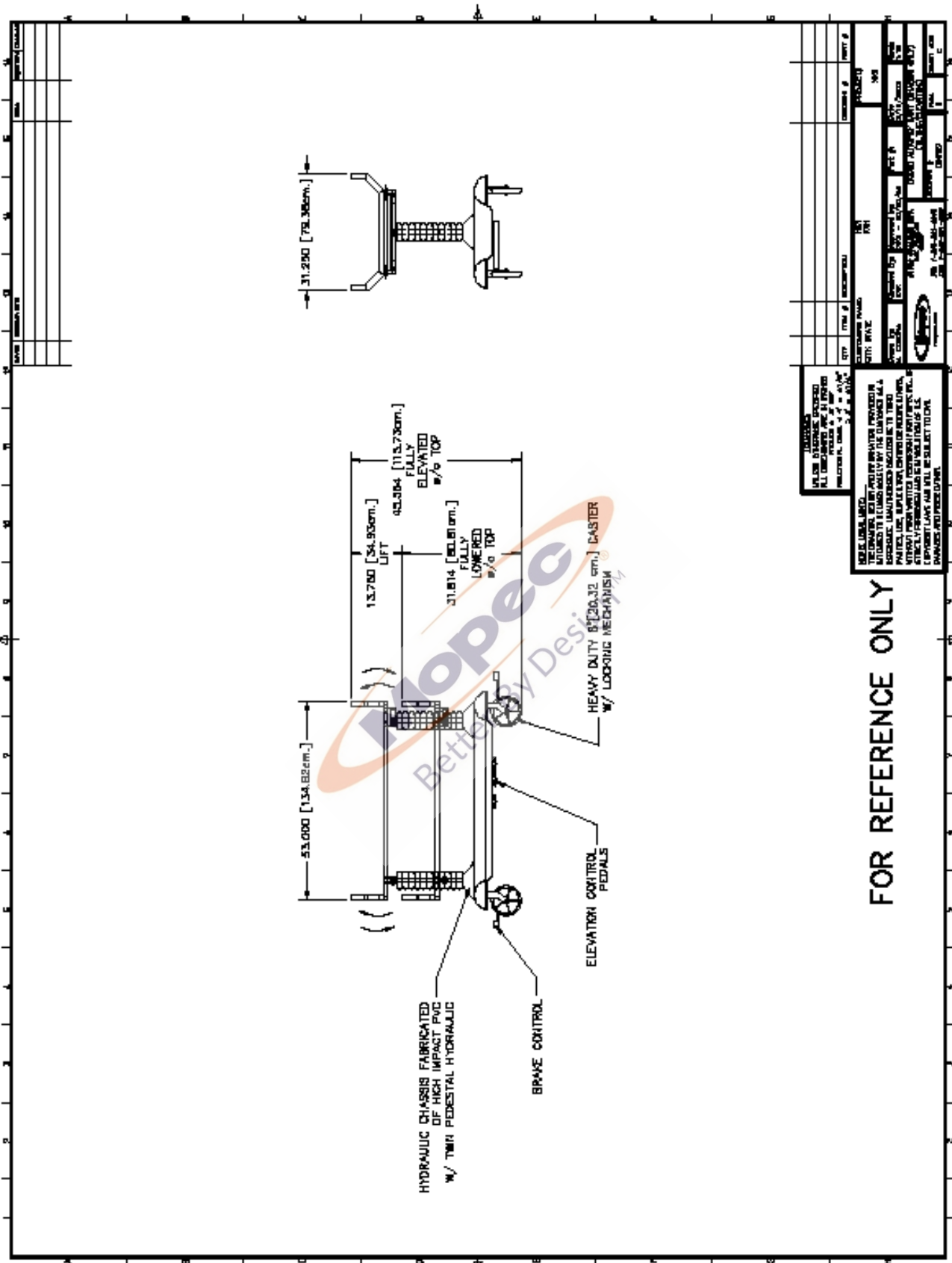


ISO 9001



Registered by:  
SAI Global Certification Services Pty Ltd, 286 Sussex Street, Sydney NSW 2000 Australia with QMI-SAI Canada Limited, 20 Carlson Court, Suite 200,  
Toronto, Ontario M9W 7K6 Canada (SAI GLOBAL). This registration is subject to the SAI Global Terms and Conditions for Certification. While all due care  
and skill was exercised in carrying out this assessment, SAI Global accepts responsibility only for proven negligence. This certificate remains the property  
of SAI Global and must be returned to them upon request.  
To verify that this certificate is current, please refer to the SAI Global On-Line Certification Register: [www.qmi-saiglobal.com/qmi\\_companies/](http://www.qmi-saiglobal.com/qmi_companies/)

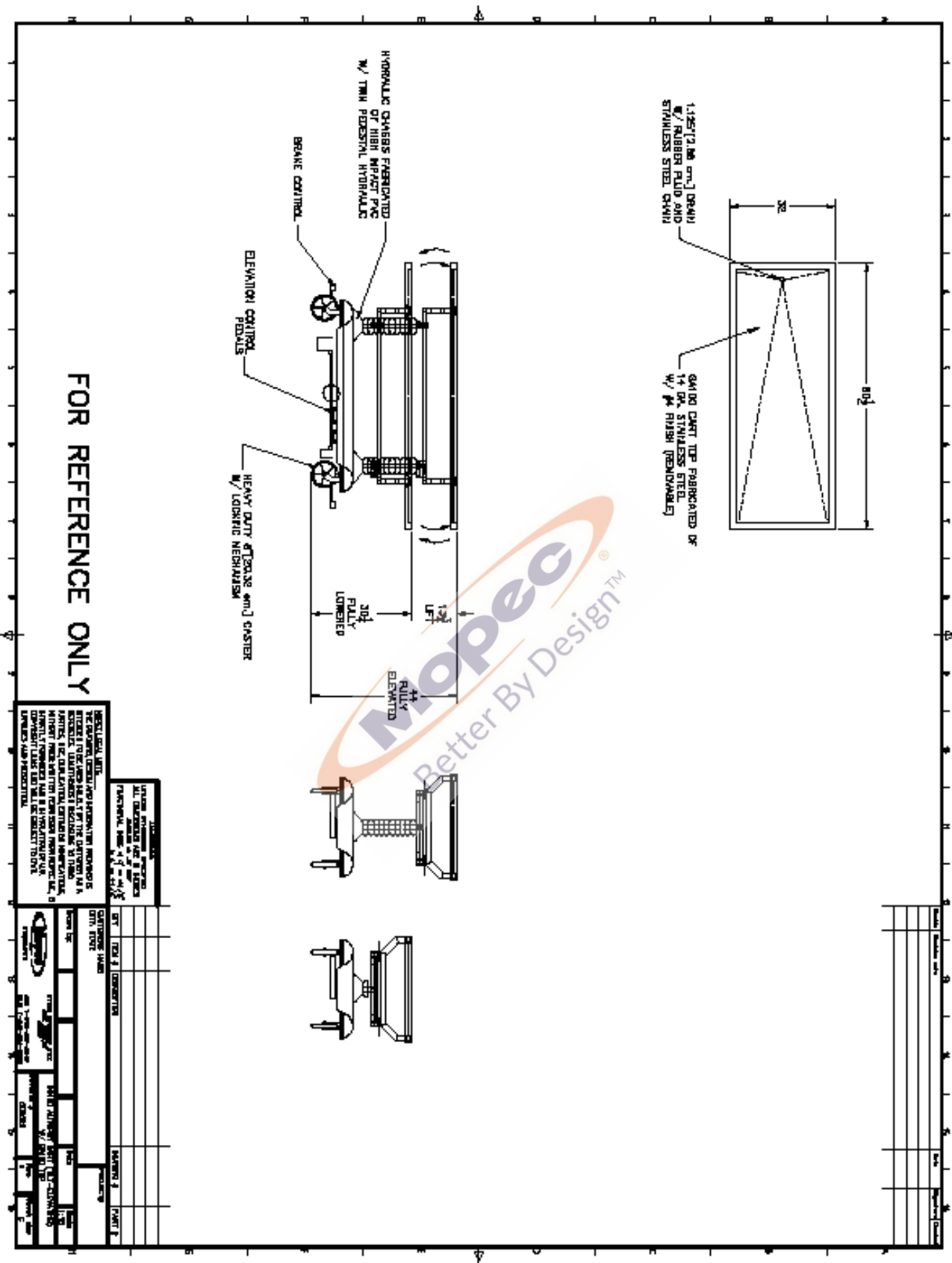
 **SAI GLOBAL**  
INFORM. INSPIRE. IMPROVE.



DATE	DESCRIPTION	BY	CHKD.

**DISCLAIMER:**  
 ALL DIMENSIONS SHOWN ON THIS DRAWING ARE APPROXIMATE. DIMENSIONS SHALL BE DETERMINED BY MEASUREMENT. DIMENSIONS SHALL BE SUBJECT TO CHANGE WITHOUT NOTICE.  
 MOPEC DESIGN, INC. 1000 W. 10TH AVENUE, SUITE 100, DENVER, CO 80202  
 TEL: 303.733.1111 FAX: 303.733.1112  
 WWW.MOPECDESIGN.COM

**FOR REFERENCE ONLY**



**IMPORTANT INFORMATION**

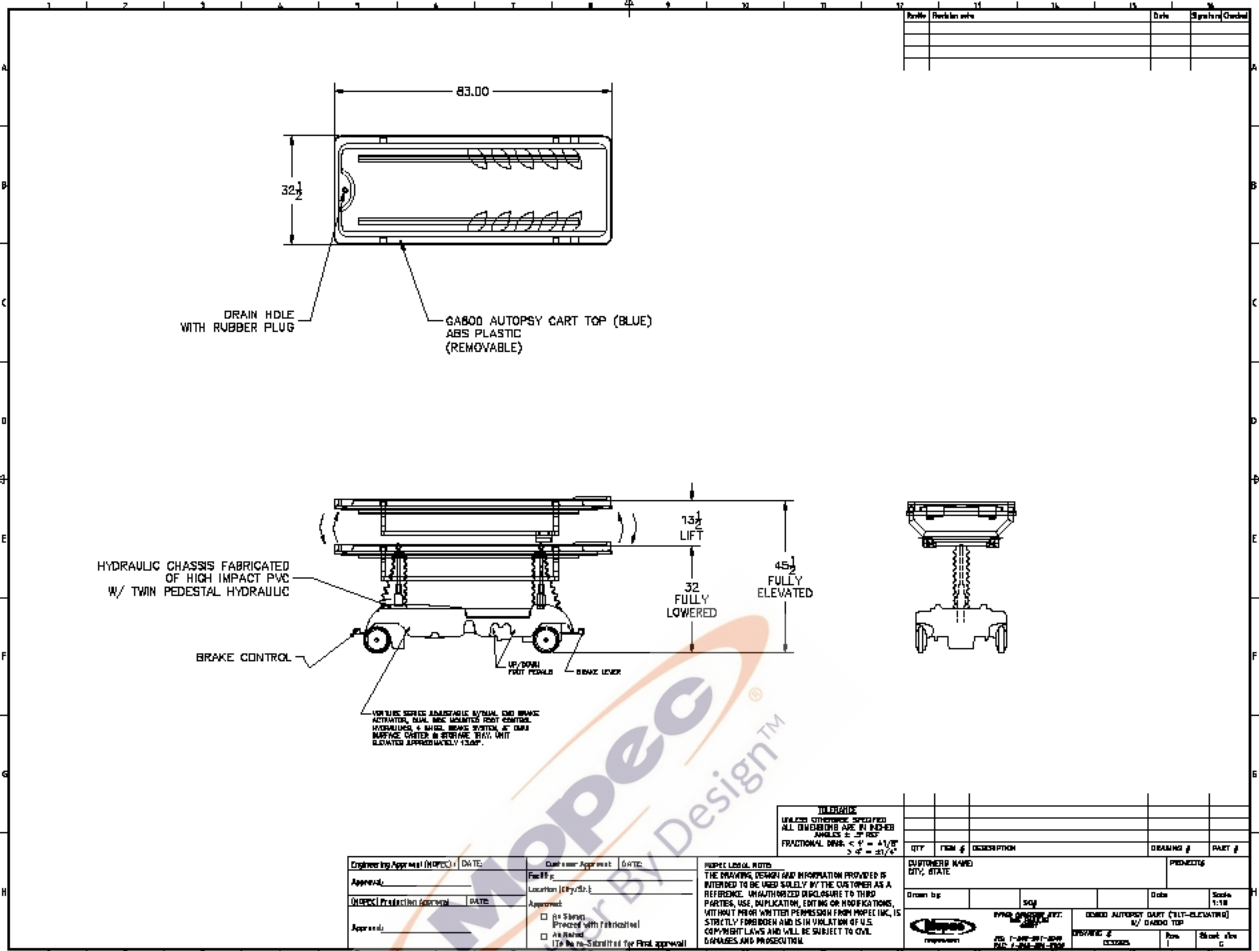
THIS DRAWING IS THE PROPERTY OF MOPEC DESIGN, INC. IT IS TO BE USED ONLY FOR THE DESIGN AND CONSTRUCTION OF THE EQUIPMENT SPECIFIED HEREIN. ANY REPRODUCTION OR USE OF THIS DRAWING FOR ANY OTHER PURPOSE WITHOUT THE WRITTEN PERMISSION OF MOPEC DESIGN, INC. IS STRICTLY PROHIBITED. MOPEC DESIGN, INC. IS NOT RESPONSIBLE FOR ANY DAMAGE TO PERSONS OR PROPERTY CAUSED BY THE USE OF THIS EQUIPMENT.

REV.	DATE	DESCRIPTION	BY	CHKD.
1	01/15/2010	INITIAL DESIGN	J. MOPEC	J. MOPEC
2	02/01/2010	REVISED TO ADD HYDRAULIC CHAIRS	J. MOPEC	J. MOPEC
3	03/10/2010	REVISED TO ADD FINISH SPECIFICATIONS	J. MOPEC	J. MOPEC
4	04/20/2010	REVISED TO ADD DIMENSIONS	J. MOPEC	J. MOPEC
5	05/15/2010	REVISED TO ADD MATERIAL SPECIFICATIONS	J. MOPEC	J. MOPEC

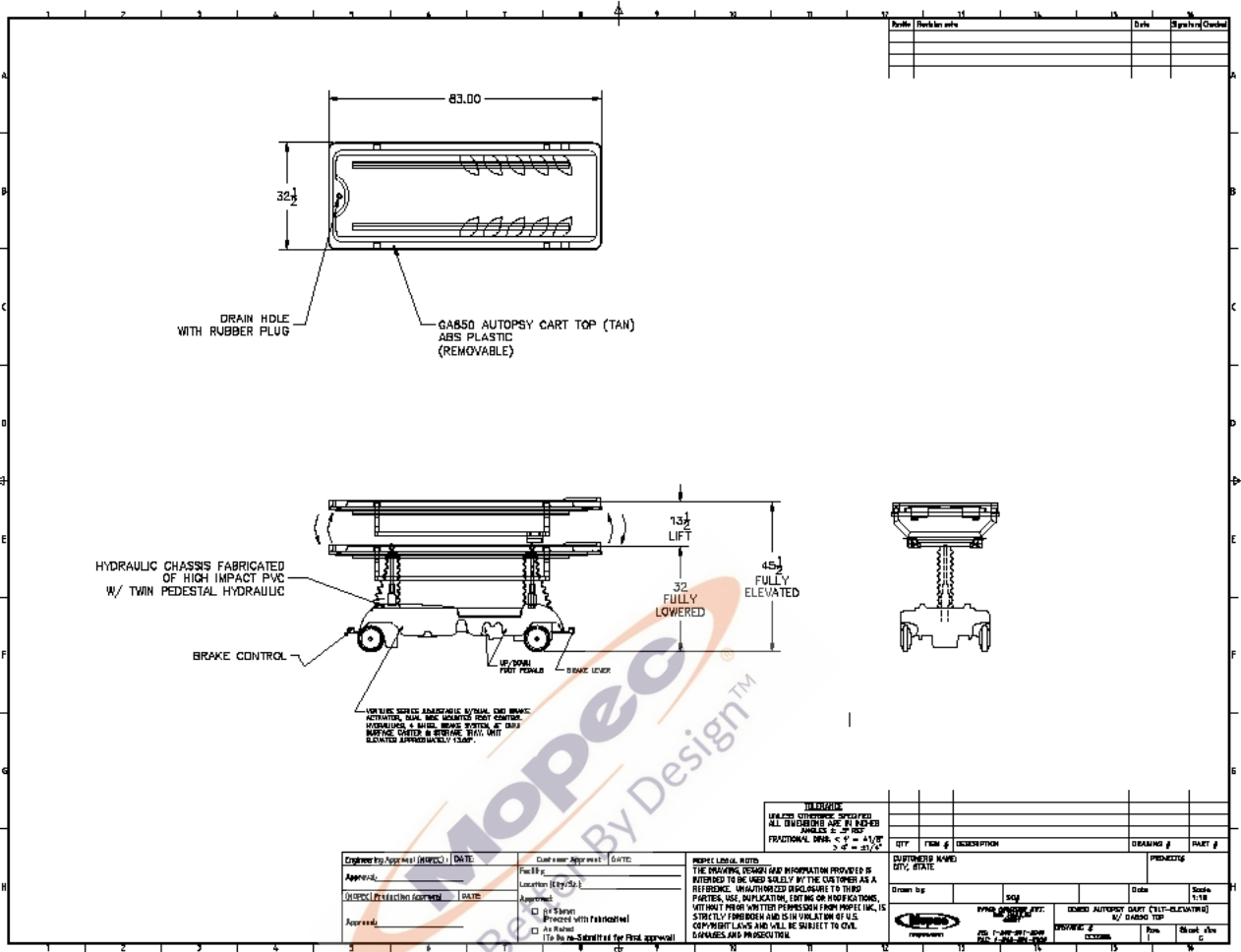




# MOPEC DC SERIES AUTOPSY CART/TABLE



# MOPEC DC SERIES AUTOPSY CART/TABLE



Rev#	Revision	Date	Signature/Checked

Drawn by: _____ Checked by: _____ Date: _____	Chief Engineer: _____ Location: (city/st) _____ Approved: _____ <input type="checkbox"/> As Shown <input type="checkbox"/> As Noted Title: Submitted for Prod. approval
---	--

**MOPEC LEGAL NOTICE**  
 THE DRAWING, DESIGN AND INFORMATION PROVIDED IS REFERRED TO BE USED SOLELY BY THE CUSTOMER AS A REFERENCE. UNAUTHORIZED DISCLOSURE TO THIRD PARTIES, USE, REPLICATION, EDITING OR MODIFICATIONS, WITHOUT PRIOR WRITTEN PERMISSION FROM MOPEC INC. IS STRICTLY FORBIDDEN AND IS IN VIOLATION OF U.S. COPYRIGHT LAWS AND WILL BE SUBJECT TO CIVIL DAMAGES AND PROSECUTION.

QUANTITY: _____ FROM: _____ DESCRIPTION: _____ CUSTOMER NAME: _____ CITY, STATE: _____	DRAWING # _____ PART # _____ DATE: _____ SHEET: 1/18 DRAWN BY: _____ CHECKED BY: _____ DATE: _____ TITLE: _____ POSITION: _____ SIGNATURE: _____
--	---