

DB SERIES

AUTOPSY CARTS - ELEVATING



REFERENCE MANUAL

Rev 6-15-14 ©



21750 Coolidge Highway • Oak Park, MI 48237 USA
+1 800-362-8491 • 248-291-2040 • Email: info@mopec.com

IMPORTANT INFORMATION

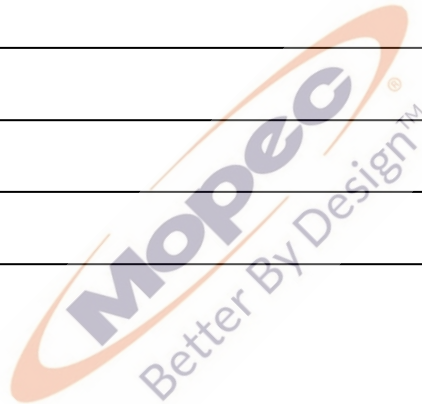
MODEL NO.:

SERIAL NO.:

DATE OF PURCHASE:

DATE OF INSTALLATION:

INSTALLATION NOTES:



SERVICE AND SUPPORT:



21750 Coolidge Highway • Oak Park, MI 48237 USA
+1 800-362-8491 • 248-291-2040 • Email: info@mopec.com

TABLE OF CONTENTS

| | |
|---------------------------------------|----------------|
| INTRODUCTION | 4 |
| CUSTOMER AND TECHNICAL SUPPORT | 5 |
| UNPACKING | 6 |
| STANDARD FEATURES | 7 |
| OPTIONAL FEATURES | 8 |
| OPERATION | 9 |
| CLEANING AND MAINTENANCE | 11 |
| WARRANTY | 12 |
| ISO CERTIFICATE | 13 |
| UNIT DRAWING | 14 - 17 |



INTRODUCTION

The “DB” Series autopsy cart/table is used in conjunction with Mopec’s wall mounted autopsy sink and is designed with a built in sloping top. The cart tops are removable from the frame and easily moved with a motorized or manual fork type lift. During an Autopsy swivel and brakes on all casters can be locked independently. During transport, one caster swivel can be locked for ease of mobility.

The DB000 is designed with mechanical hydraulic lifting pistons for years of maintenance free operation. The DB000 elevating autopsy cart provides a foldable hand crank lifting mechanism utilized to easily and safely elevate one end of the autopsy cart for an extra sloped surface.

The DB100 includes the GA100 removable autopsy cart top and can be utilized with most equipment for removal and/or long term storage. The DB100 elevating autopsy cart is also used in conjunction with Mopec Wall Mounted Autopsy Sinks.

The DB000 incorporates a mechanical hydraulic lifting mechanism lifting from a level surface to a sloped surface of 7-3/4 inch.

Your comments and suggestions are always welcome and we invite you to call and let us know what you think of the “New” DB Series Elevating Autopsy Cart”.

CUSTOMER AND TECHNICAL SUPPORT

All Mopec staff members are Customer Service experts. We believe in providing nothing but the best possible service for all our customers. Our Technical Support group includes everyone from our design engineers to members of our production group. All are dedicated to providing comprehensive and courteous support to all Mopec customers.

The following information is included to help our customers communicate with Customer and Technical Support at Mopec.



The Better Product People

21750 Coolidge Hwy. Oak Park, MI 48237
(800) 362-8491 | Mopec.com

UNPACKING

- 1.) Carefully inspect the exterior of the shipping container before opening. If the crate is damaged and the product has sustained damage then immediately contact Mopec and the freight carrier. **Never discard the shipping container even if it is damaged beyond recognition.**
- 2.) The receiver should note any suspected damage on the bill of lading and sign it. Mopec will help assist in filing a claim for product repair and/or replacement.
- 3.) Carefully open the containers and inspect the goods for concealed damage. If concealed damage is noticed (i.e. Broken welds, dented stainless, scratches, etc.) Follow through as noted above, and again do not discard the shipping material, they are important in settling claims.



STANDARD FEATURES

Removable Cart Top:

- **GA100, GA200 and GA300** Fabricated of 14 gauge stainless steel with #4 satin finish. The top is recessed and dimpled toward the drain hole. A drain plug on a chain is provided. All exposed welds are ground smooth and grained to match a #4 satin finish
- **GA800 and GA850** Mopec's Plastic, x-ray body tray is durable and lightweight, Photo-Blue or Beige. Both trays have rails to hold X-Ray cassettes. Recessed channels for improved drainage of fluids. Includes a drain stopper and safety chain.

Cart Frame: Fabricated of 1-1/2" (3.8 cm) heavy gauge stainless steel tubing. All welding is continuous with an approximate 1/8" (.38 cm) radius bead and are clean and free of burrs and discoloration.

Welding: All welding is TIG type welding utilizing only stainless steel as a filler media. All weld fillets are approximately 1/4" (.64 cm) diameter. All welds are brushed clean removing any weld burns and burrs.

Wheels/Casters: Heavy-duty 8" diameter non corrosive polyamide wheels feature the Total Lock caster system.

Elevating Mechanism: Chrome plated gear box with heavy duty 1" acme thread and plastic hand crank 6" travel. Hydraulic Lifts.

OPTIONAL FEATURES

- **GA100 Autopsy Cart Top (Stainless Steel)** – Heavy-duty stainless construction. (DB000 + GA100 = DB100)
- **GA200 Autopsy Cart Top (Poly Inner Liner)** – Mopec's X-Ray autopsy cart top is constructed with a solid structural stainless steel frame and a unique polyethylene insert that can be x-rayed through with virtually no shadowing. (DB000 + GA200 = DB200)
- **GA300 Autopsy Cart Top (Inner Trough)** – Heavy-Duty stainless steel construction with inner drain trough. (DB000 + GA300 = DB300)
- **GA800 Autopsy Cart Top Plastic Dark Blue**– Dimensions: 82.5" L x 32-1/8"W x 5" High (Maximum point) Mopec's Plastic, x-ray body tray is durable and lightweight, Photo-Blue color rails to hold X-Ray cassettes. Recessed channels for improved drainage of fluids. Includes a drain stopper and safety chain. (DB000 + GA800 = DB800)
- **GA850 Autopsy Cart Top Plastic Beige** – Dimensions: 82.5" L x 32-1/8"W x 5" High (Maximum point) Mopec's Plastic, x-ray body tray is durable and lightweight, Photo-Blue color rails to hold X-Ray cassettes. Recessed channels for improved drainage of fluids. Includes a drain stopper and safety chain. (DB000 + GA800 = DB850)
- **Head Rest**

Operating

ELEVATING:

By rotating the hand crank clockwise the elevating end of the cart will raise.
If there are any questions feel free to call Mopec **800-362-8491**



ELEVATING (CLOCKWISE)

LOWERING:

By rotating the hand crank counterclockwise the elevating end of the cart will lower. If there are any questions feel free to call Mopec **800-362-8491**



LOWERING (COUNTERCLOCKWISE)

Note: Minimum weight must be applied to the lift system in order to lower. In the event the top is not on during lowering simply place your hand on the lift bar and apply minimal pressure approximately 40 Lbs.

CLEANING AND MAINTENANCE

DISINFECTING AND MAINTAINING STAINLESS STEEL SURFACES

All stainless steel surfaces can be cleaned with soap and water, which will remove debris.

The stainless steel surfaces can be disinfected with a non caustic disinfectant. We suggest using BE045 PathCloud or BE047 Bench Wipe for cleaning purposes.

We recommend you **DO NOT USE** a bleach solution to clean your unit, bleach will eventually erode stainless steel if not thoroughly rinsed. **The use of chlorine bleach will VOID THE STAINLESS STEEL WARRANTY**

During the cleaning we suggest wiping the surface in the same direction as the satin finish which will help elevate dirt from the grain finish.

Scratches can be removed simply by utilizing a "non-metallic" abrasive pad and rubbing in the same direction as the satin finish.

Since most abrasive pads vary from one supply to another, we suggest rubbing the entire surface to blend the scratch and blend the balance of the surface.

WARRANTY

MOPEC DB SERIES AUTOPSY CART

LIMITED WARRANTY

Products manufactured by Mopec will be free from defects in material and workmanship and conform to Mopec's description or specifications. If a warranty claim is made within one (1) year from the earlier if the date of acceptance/first beneficial use, the defective or nonconforming Product or Part thereof will be repaired or (at Mopec's option) replaced free of charge, FCA Mopec's dock. All warranty claims must be in writing and received by Mopec within the warranty period. The warranty is not transferable (other than to customers of Mopec's authorized Distributors), and will not apply unless the Equipment has been properly installed, maintained and operated in accordance with all instructions; and does not apply to defects, nonconformities or other failure due to Equipment misuse, abuse, modifications, or other causes outside Mopec's control. If a warranty claim is made in writing within the warranty period, the defective or nonconforming Equipment (or Part thereof) will be repaired or (at Mopec's option) replaced free of charge, FCA Mopec's dock.

THERE ARE NO WARRANTIES WHICH EXTEND BEYOND THE DESCRIPTION ON THE FACE HEREOF. THE WARRANTY AS SET FORTH HEREIN IS IN LIEU OF ALL OTHER WARRANTIES, EXPRESS OR IMPLIED, INCLUDING ANY IMPLIED WARRANTY OF MERCHANTABILITY OR FITNESS FOR A PARTICULAR PURPOSE.

To the extent that Mopec is acting as a supplier of Products manufactured by a third party, the Products will be warranted only to the extent that they are warranted by their manufacturers and Buyer (or its customer) agrees to look solely to the Product manufacturer for all warranty claims.

21750 COOLIDGE HWY. OAK PARK , MICHIGAN 48237



CERTIFICATE OF REGISTRATION

This is to certify that

MP Acquisition, LLC DBA Mopec

21750 Coolidge Highway, Oak Park, Michigan 48237 USA

operates a

Quality Management System

which complies with the requirements of

ISO 9001:2008

for the following scope of registration

The registration covers the quality management system for the design, engineering, manufacturing and installation of equipment and distribution of supplies for morgue, pathology, histology and necropsy applications.

Certificate No.: CERT-0078089
File No.: 1068177
Issue Date: March 11, 2014

Original Certification Date: April 9, 2008
Current Certification Date: April 7, 2014
Certificate Expiry Date: April 6, 2017

Chris Jouppi
President,
QMI-SAI Canada Limited

Samer Chaouk
Head of Policy, Risk and Certification

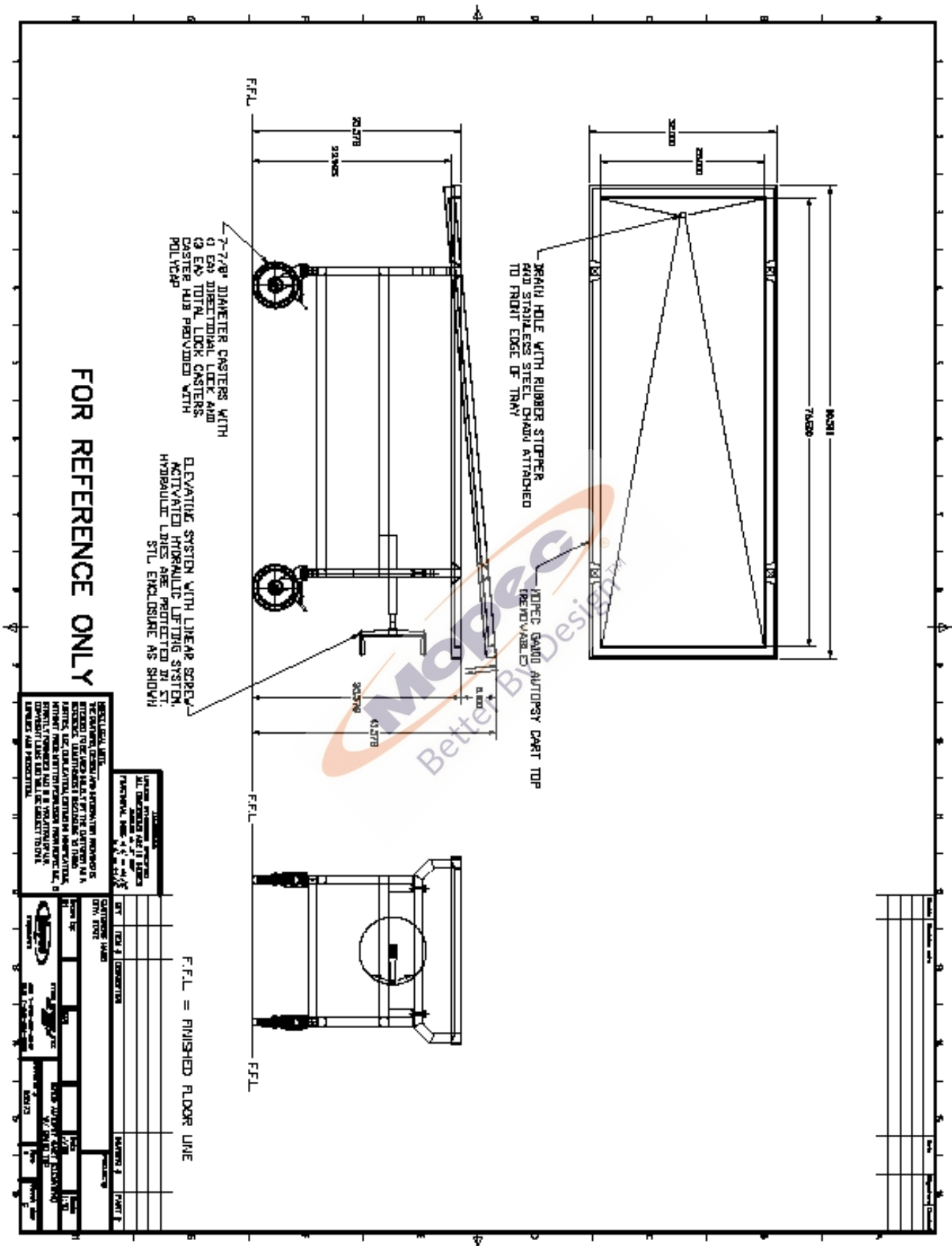


ISO 9001

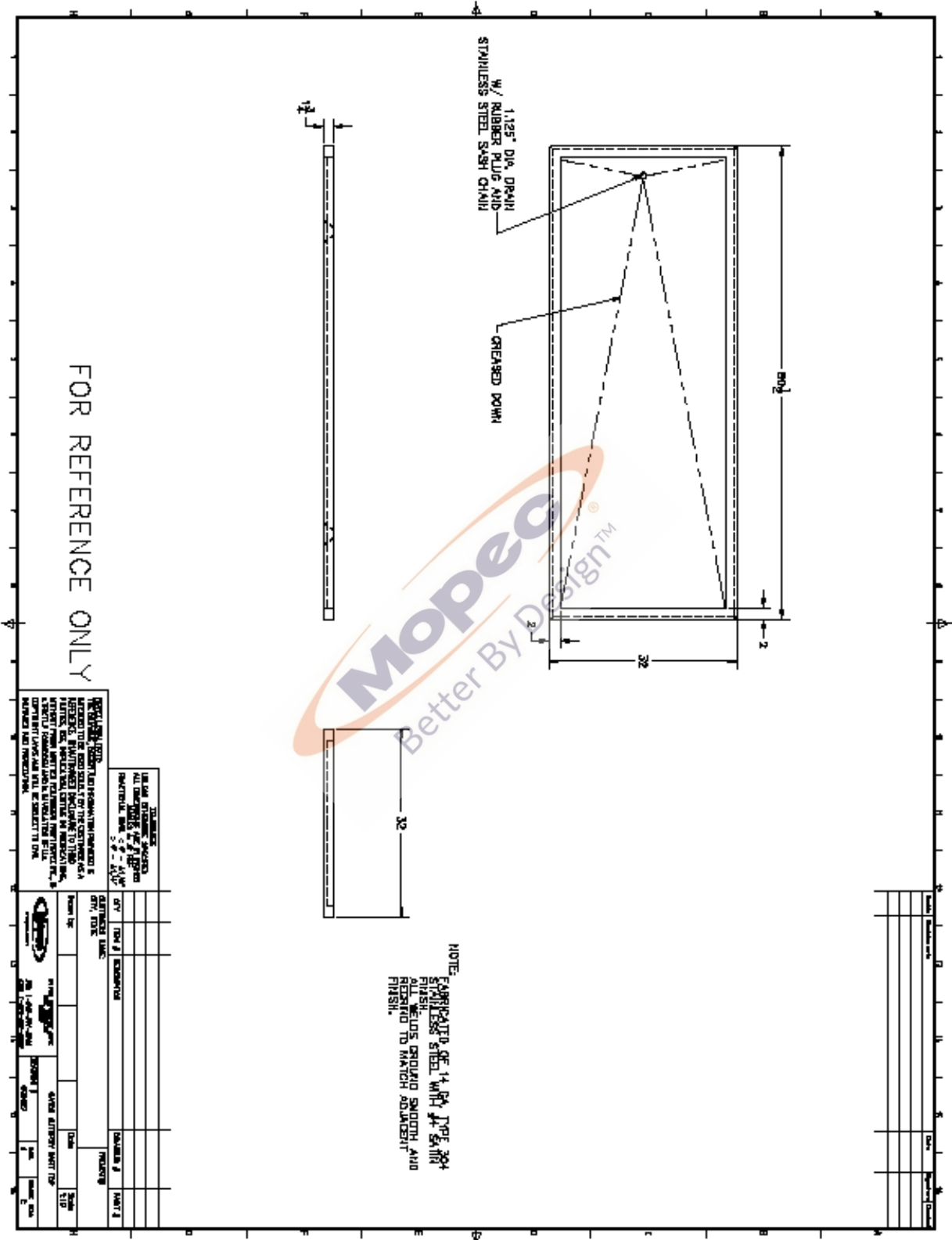


Registered by:
SAI Global Certification Services Pty Ltd, 286 Sussex Street, Sydney NSW 2000 Australia with QMI-SAI Canada Limited, 20 Carlson Court, Suite 200,
Toronto, Ontario M9W 7K6 Canada (SAI GLOBAL). This registration is subject to the SAI Global Terms and Conditions for Certification. While all due care
and skill was exercised in carrying out this assessment, SAI Global accepts responsibility only for proven negligence. This certificate remains the property
of SAI Global and must be returned to them upon request.
To verify that this certificate is current, please refer to the SAI Global On-Line Certification Register: www.qmi-saiglobal.com/qmi_companies/

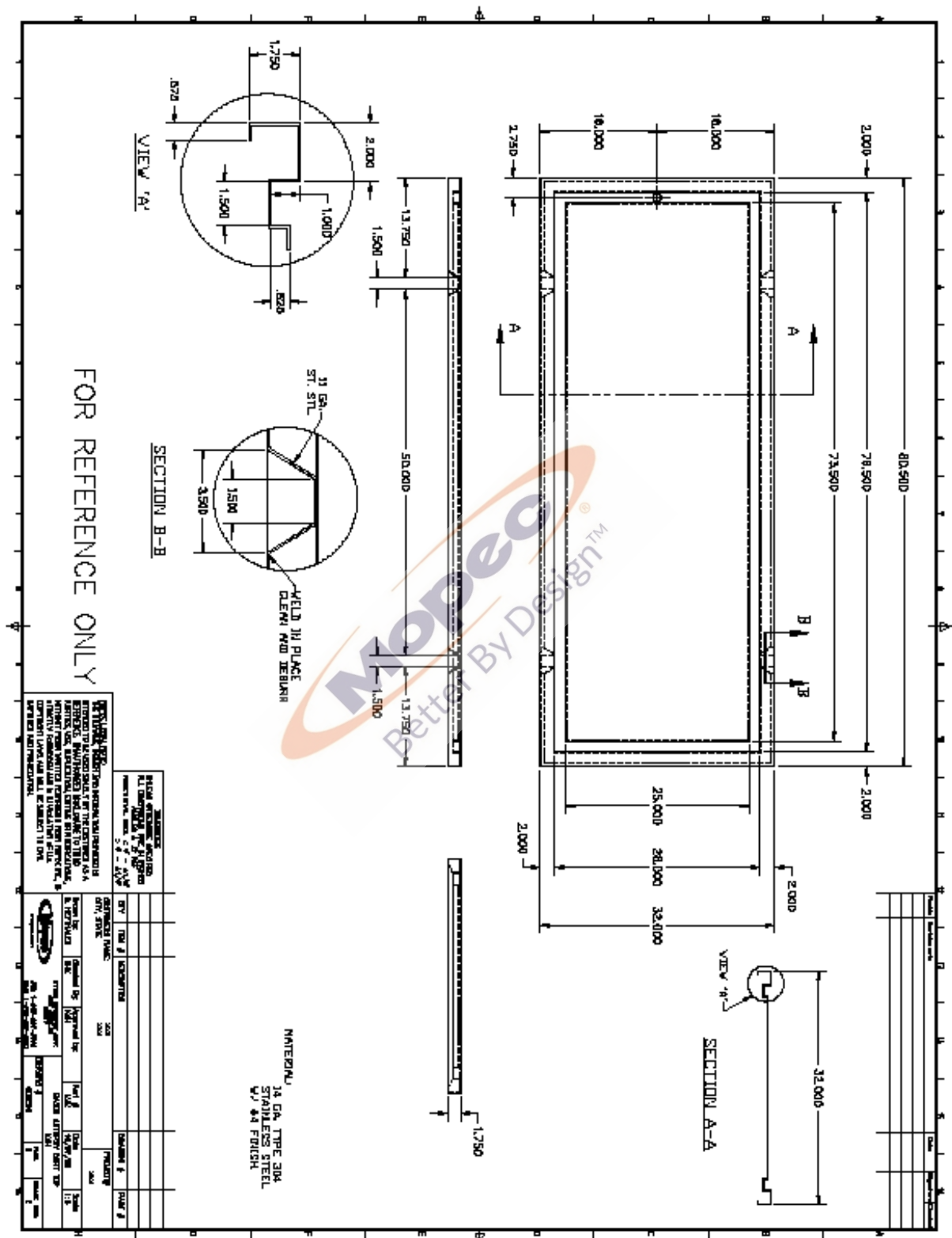
 **SAI GLOBAL**
INFORM. INSPIRE. IMPROVE.



GA100 TOP



GA300 Top



GA800/GA850 Top

