

# CF400 & CF401

---

## *EMBALMING CARTS*



## REFERENCE MANUAL

Rev 6-10-14©



21750 Coolidge Highway • Oak Park, MI 48237 USA  
+1 800-362-8491 • 248-291-2040 • Email: [info@mopec.com](mailto:info@mopec.com)

## **IMPORTANT INFORMATION**

**MODEL NO.:**

---

**SERIAL NO.:**

---

**DATE OF PURCHASE:**

---

**DATE OF INSTALLATION:**

---

**INSTALLATION NOTES:**

---

---

---

---

---

---



**SERVICE AND SUPPORT:**



21750 Coolidge Highway • Oak Park, MI 48237 USA  
+1 800-362-8491 • 248-291-2040 • Email: info@mopec.com

## **TABLE OF CONTENTS**

<b>INTRODUCTION</b>	<b>4</b>
<b>CUSTOMER AND TECHNICAL SUPPORT</b>	<b>5</b>
<b>UNPACKING</b>	<b>6</b>
<b>CLEANING AND MAINTENANCE</b>	<b>7</b>
<b>STANDARD FEATURES</b>	<b>8</b>
<b>WARRANTY</b>	<b>9</b>
<b>CART DRAWING</b>	<b>10</b>
<b>ISO CERTIFICATE</b>	<b>11</b>

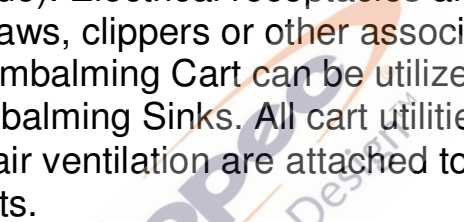


## **INTRODUCTION**

CF400 Embalming Cart utilizes removable 23 inch wide body storage trays and processing equipment typically used for most anatomy departments and high capacity embalming facilities.

CF401 Embalming Cart utilizes removable 27 inch wide body storage trays and processing equipment typically used for most anatomy departments and high capacity embalming facilities.

The CF400 and CF401 incorporates two full length plenum exhaust chambers to fully ventilate the cadaver during the embalming process. Exhaust air velocities can easily accommodate hazardous formaldehyde fumes. The cart is rinsed by two full length table rinse bars (one on each side). Electrical receptacles are conveniently located the cart for saws, clippers or other associated equipment. The CF400 and CF401 Embalming Cart can be utilized with the CF100, CF200 or CF300 Embalming Sinks. All cart utilities including water, electrical, drain and air ventilation are attached to the embalming cart with quick disconnects.



## **CUSTOMER AND TECHNICAL SUPPORT**

All Mopec staff members are Customer Service experts. We believe in providing nothing but the best possible service for all our customers. Our Technical Support group includes everyone from our design engineers to members of our production group. All are dedicated to providing comprehensive and courteous support to all Mopec customers.

The following information is included to help our customers communicate with Customer and Technical Support at Mopec.



**The Better Product People**

21750 Coolidge Hwy. Oak Park, MI 48237  
(800) 362-8491 | [Mopec.com](http://Mopec.com)

## **UNPACKING**

- 1.) Carefully inspect the exterior of the shipping container before opening. If the crate is damaged and the product has sustained damage then immediately contact Mopec and the freight carrier. **Never discard the shipping container even if it is damaged beyond recognition.**
- 2.) The receiver must note any suspected damage on the bill of lading and sign it. Mopec will help assist in filing a claim for product repair and/or replacement.
- 3.) Carefully open the containers and inspect the goods for concealed damage. If concealed damage is noticed (i.e. Broken welds, dented stainless, scratches, etc.) Follow through as noted above, and again do not discard the shipping material, they are important in settling claims.



## **CLEANING AND MAINTENANCE**

### **DISINFECTING AND MAINTAINING STAINLESS STEEL SURFACES**

All stainless steel surfaces can be cleaned with soap and water, which will remove debris.

The stainless steel surfaces can be disinfected with a non caustic disinfectant. We suggest using BE045 Path Cloud or BE047 Bench Wipe for cleaning purposes.

We recommend you **DO NOT USE** a bleach solution to clean your unit, bleach will eventually erode stainless steel if not thoroughly rinsed. **The use of chlorine bleach will VOID THE STAINLESS STEEL WARRANTY**

During the cleaning we suggest wiping the surface in the same direction as the satin finish which will help elevate dirt from the grain finish.

Scratches can be removed simply by utilizing a "non-metallic" abrasive pad and rubbing in the same direction as the satin finish.

Since most abrasive pads vary from one supply to another, we suggest rubbing the entire surface to blend the scratch and blend the balance of the surface.

## **STANDARD FEATURES**

**Removable Body Tray:** The JC100 23" Body Tray offers the standard 1" (2.5 cm) rolled edge construction and is fabricated of 18 gauge stainless steel with a #4satin finish. All corners are welded with a continuous bead. Two hand slots are provided on each end of the tray for easy handling. Tray has drain holes and stopper.

The JC101 27" Body Tray offers the standard 1" (2.5 cm) rolled edge construction and is fabricated of 18 gauge stainless steel with a #4satin finish. All corners are welded with a continuous bead. Two hand slots are provided on each end of the tray for easy handling. Tray has drain holes and stopper.

**Cart Frame:** Fabricated of 1-1/2" (3.8 cm) heavy gauge stainless steel tubing. All welding is continuous with an approximate 1/8" (.38 cm) radius bead and are clean and free of burrs and discoloration.

**Welding:** All welding is TIG type welding utilizing only stainless steel as a filler media. All weld fillets are approximately 1/4" (.64 cm) diameter. All welds are brushed clean removing any weld burns and burrs.

**Wheels/Casters:** Heavy-duty 8" diameter non corrosive polyamide wheels feature the Total Lock caster system.

**Electrical Connection:** GFCI receptacle are encased in a waterproof flexible seal to assure easy clean up and disinfecting

**Water Connection:** Water is supplied to the table rinse through vinyl tubing and quick disconnects.

**Ventilation chambers:** Are constructed of 18 gage 304 Stainless Steel and have a drain at the bottom.

**Table Rinse:** Is constructed of 304 Stainless steel tube. The water is dispensed the length of the table. The 24 nozzles are replaceable and the rinse bar flips up and out of the way for loading and unloading the tray.

Cart Dimensions: Overall Dimensions: 79" (200.7cm) long x 33.75" (85.7cm) Wide x 38.5" (97.8cm) High



## **WARRANTY**

### **MOPEC CF400 AND CF401 EMBALMING CARTs**

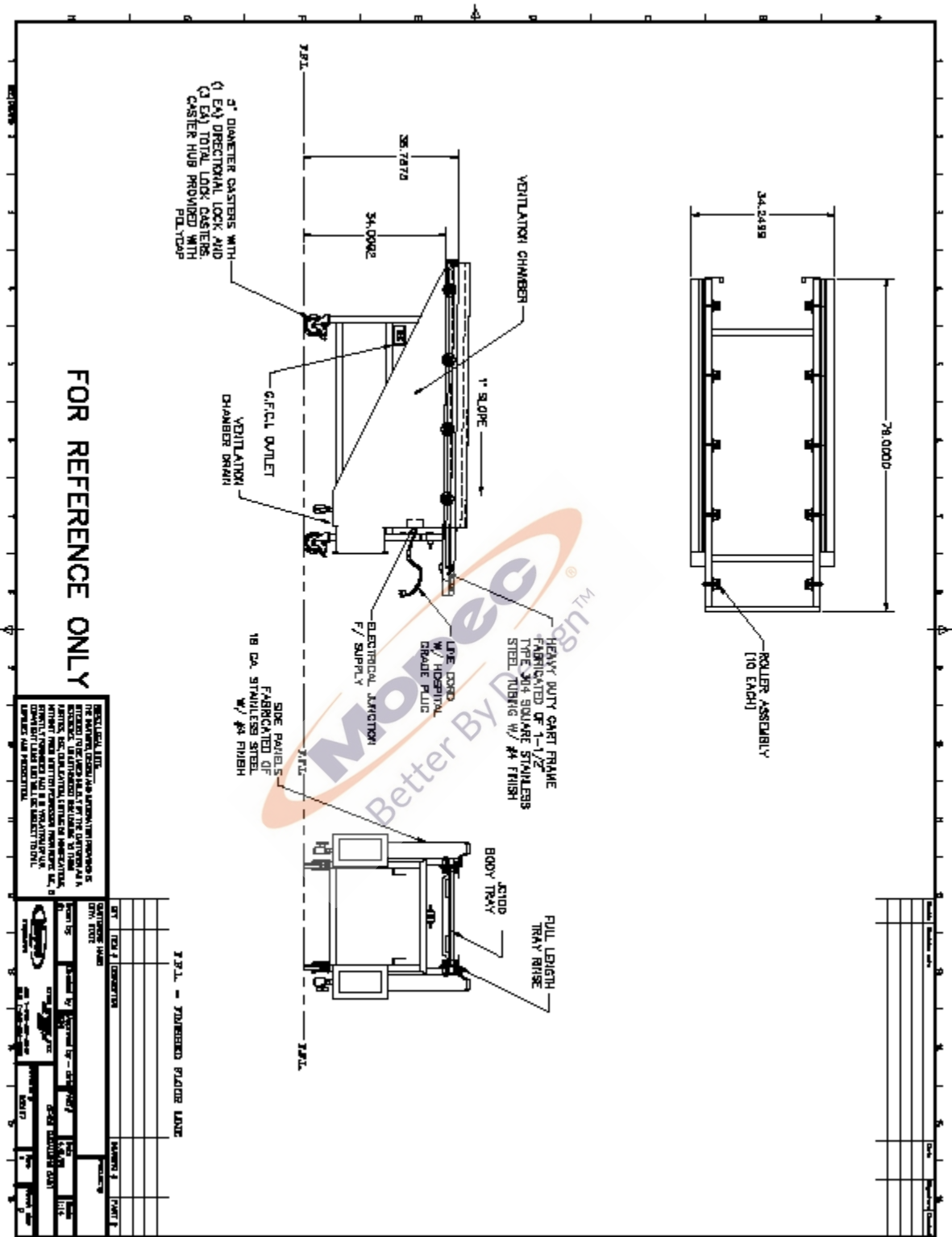
#### **LIMITED WARRANTY**

Products manufactured by Mopec will be free from defects in material and workmanship and conform to Mopec's description or specifications. If a warranty claim is made within one (1) year from the earlier if the date of acceptance/first beneficial use, the defective or nonconforming Product or Part thereof will be repaired or (at Mopec's option) replaced free of charge, FCA Mopec's dock. All warranty claims must be in writing and received by Mopec within the warranty period. The warranty is not transferable (other than to customers of Mopec's authorized Distributors), and will not apply unless the Equipment has been properly installed, maintained and operated in accordance with all instructions; and does not apply to defects, nonconformities or other failure due to Equipment misuse, abuse, modifications, or other causes outside Mopec's control. If a warranty claim is made in writing within the warranty period, the defective or nonconforming Equipment (or Part thereof) will be repaired or (at Mopec's option) replaced free of charge, FCA Mopec's dock.

**THERE ARE NO WARRANTIES WHICH EXTEND BEYOND THE DESCRIPTION ON THE FACE HEREOF. THE WARRANTY AS SET FORTH HEREIN IS IN LIEU OF ALL OTHER WARRANTIES, EXPRESS OR IMPLIED, INCLUDING ANY IMPLIED WARRANTY OF MERCHANTABILITY OR FITNESS FOR A PARTICULAR PURPOSE.**

To the extent that Mopec is acting as a supplier of Products manufactured by a third party, the Products will be warranted only to the extent that they are warranted by their manufacturers and Buyer (or its customer) agrees to look solely to the Product manufacturer for all warranty claims.

21750 COOLIDGE HWY. OAK PARK, MICHIGAN 48237





# CERTIFICATE OF REGISTRATION

This is to certify that

**MP Acquisition, LLC DBA Mopec**

21750 Coolidge Highway, Oak Park, Michigan 48237 USA

operates a

**Quality Management System**

which complies with the requirements of

**ISO 9001:2008**

for the following scope of registration

**The registration covers the quality management system for the design, engineering, manufacturing and installation of equipment and distribution of supplies for morgue, pathology, histology and necropsy applications.**

Certificate No.: CERT-0078089  
File No.: 1068177  
Issue Date: March 11, 2014

Original Certification Date: April 9, 2008  
Current Certification Date: April 7, 2014  
Certificate Expiry Date: April 6, 2017

Chris Jouppi  
President,  
QMI-SAI Canada Limited

Samer Chaouk  
Head of Policy, Risk and Certification



ISO 9001

