



# USER MANUAL

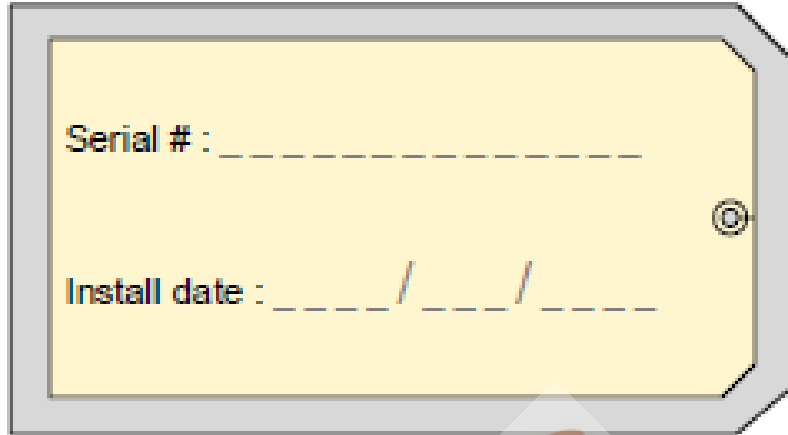
## CF Series Embalming Sinks CF100, CF200 CF300



Rev 5-23-17 ©

Serial # : \_\_\_\_\_

Install date : \_\_\_\_ / \_\_\_\_ / \_\_\_\_



21750 Coolidge Highway • Oak Park, MI 48237 USA  
+1 800-362-8491 • 248-291-2040 • Email: info@mopec.com

TABLE OF CONTENTS

**UNPACKAGING YOUR PRODUCT.....4**

**INSTALLATION.....5**  
    **PRODUCT DRAWINGS**  
    CF100 ROUGH IN.....7  
    CF200 ROUGH IN.....8  
    CF300 ROUGH IN.....9

**INTRODUCTION .....10**  
    **PRODUCT DRAWINGS**  
    CF100 .....11  
    CF200 .....12  
    CF200 .....13

**FEATURES.....14**  
    Option Information.....15

**AIR HANDLING.....28**

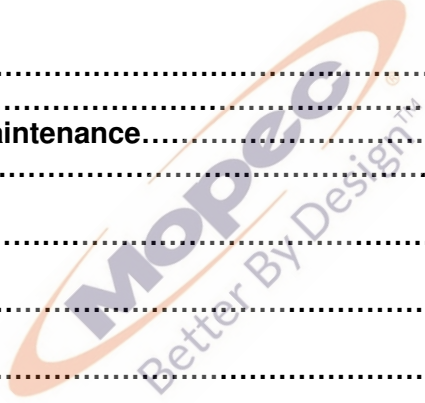
**CLEANING AND MAINTENANCE**  
    Disinfecting and Cleaning.....29  
    Clear Disposal Jam.....29  
    Stainless Steel Care and Maintenance.....30  
    Preventive Maintenance.....32

**WARRANTY.....33**

**SAFETY LABELS.....34**

**TROUBLE SHOOTING GUIDE.....34**

**CERTIFICATES.....35**



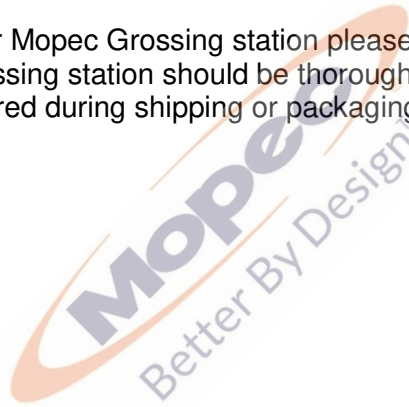
## UNPACKING

- 1) Carefully inspect the exterior of the shipping container before opening. If the crate is damaged and the product has sustained damage then immediately contact Mopec and the freight carrier. **Never discard the shipping container even if it is damaged beyond recognition.**
- 2) Have the delivery driver note any suspected damage on the Bill of Lading and sign it. Mopec will help assist in filing a claim for product repair and/or replacement.
- 3) Carefully open the containers and inspect the equipment for concealed damage. If visible damage is noticed (i.e. broken welds, dented stainless, scratches, etc.) follow through as noted above. Do not discard the shipping material. They are important in settling claims.

**CAUTION:** There are loose components in the packaging of your product. Be very careful in examining the packaging material as it may contain installation parts and/or product components.

## INSPECTION

- 1) After carefully unpacking your Mopec Grossing station please inspect the items in the list below prior to installing the unit. The Grossing station should be thoroughly checked for loose screws, defects, or damage that may have occurred during shipping or packaging.



## INSTALLATION

The installation procedure is quite important to assure 100% functionality with the equipment. Upon unpacking the unit, carefully place it in the area where it is to be used.

The CF100 / CF200 / CF300 are utilized with an attaching Embalming Cart (**CF400**). The Embalming carts are universal and can be utilized with the entire CF series units. It is imperative that the mounting height is at 34" finished height and is exclusive of any slope in the floor of the building.

Placing a bubble level on the edge of the unit's edge (do not place the level on the table's surface) side to side and front to back, assures the unit is completely level.

Mount the unit as required with an approved fastener. The fastener is suggested as being a minimum dimension of 3/8" diameter and having a Tensile Pullout Load of at least 4,000 lbs.

Once the unit is secured to the wall, the utilities can be hooked up. The cold-water line is 3/4" and the hot water is 1/2" hard copper which will require customer supplied on/off valves. Mopec suggests using ball type water valves to assure proper water flow for operating all table accessories. Drain lines are standard 1 1/2" IPS and need to be vented to assure proper drainage.

Electrical requirements are solely dependent on accessories. If the table excludes a disposal, one (1) 115v/1ph/60Hz 15-amp circuit is sufficient. If a disposal is included, a second 115v/1ph/60Hz 15-amp circuit must be added. This second circuit will be tied into the same junction box but **wired independently**.

Each CF Unit has a three-foot whip for attachment to the facility, unless a plug and cord are requested. The whip leads are labeled. And depending on the options selected there are either 3 wires or 5 wires. L1 and C1 are for the unit electrical options such as lights, lifts and fans if a recirculation unit. L2 and C2 are for the disposal.

115V Info

**Without a disposal**, there are three wires:

Black Labeled as L1

White Labeled as C1

Green w Yellow Stripe Ground

**With the Disposal**, there are five wires

Black Labeled as L1

White Labeled as C1

Green w Yellow Stripe Ground

Red Labeled L2

White Labeled C2

Flexible water tight conduit and connections is the preferred conduit and is not provided with the unit. This is due to an unknown length needed and variances possible in the rough in process. If the disposal option is purchased there **MUST** be two separate circuits for the two circuits on the grossing station. You must have separate circuits for the disposal and unit.

### Drain Connection

The MB Grossing stations are equipped with 1.5" Diameter drain and connections. **DO NOT** modify the drain line or connections without contacting MOPEC first. The Units are built in accordance with the rough in drawings specific to the unit. The drain connection provided unless specifically requested otherwise is Orion Acid Waste Pipe 1.5" Diameter. The height is per the rough in drawings provided at the time of the order.

### Water Supply Connection

The water supply connections are 1/2" DIA copper pipe. The unit has been cleared of water and debris during the manufacturing and testing of the unit. The rough in drawing for the unit suggests a 1/4 turn valve to be connected to the wall. This is to allow the water to be localized and disconnected should the need arise to work on plumbing in the future. Before connecting the unit to the facility water supply, check the lines in the

facility for debris by flushing the lines for a moment. After the connections are made remove the aerator from the faucet and turn the water on and open the faucet and other water options after the faucet to allow any debris to evacuate the system. Then one option at a time, open the valves for the other water options (i.e. Perimeter Rinse, Spray Hose and then the Disposal). This is the time to look for leaks or other plumbing issues. The plumbing is tested for leaks and function at the facility and is put under pressure for 45 minutes to check for leaks. However, the plumbing is hard copper and solder connections. During transport a unit may experience a failed solder joint. Contact MOPEC immediately if there is a leak.

### **Ventilation Connection**

Ventilation is connected to the facility ventilation system via duct work. The duct work will vary depending on the model and options chosen for your unit. Air flow should be between 1000 and 1400 CFM while allowing for 0.5 to .75 inch W.G. static pressure

**\*\* Caution \*\* These are general guidelines and installation is specific for each of the CF units. Professional installation is recommended.**











## INTRODUCTION

Mopec's CF Series Wall Mounted with optional leg stands (walls that cannot support units alone) come in three styles which make them advantageous for a wide variety of users.

The CF- Series Embalming equipment consists of two distinct pieces of equipment; the Embalming sink and the Embalming cart. The embalming sink contains all the facilities connections utilized during the embalming process with the exception of the embalming pump. The Embalming cart is the method of supporting the body and most importantly is utilized to ventilate the body during the embalming process. The cart is designed with what is known as an open plenum ventilation system and is provided on both sides of the body.

The Embalming Sink incorporates all the necessary features for full body embalming. The sink includes a hot and cold water fixture with a hydro-aspirator that is conveniently located to aspirate any fluids from the body in preparation for embalming. A body rinse fixture is provided for the cleaning and rinsing process during the final stages of body embalming. Heavy-duty grid plates are utilized to support the embalming machine. The drain surface below the grid plates are tilted toward the large sink, which includes a perimeter rinse. The perimeter rinse prevents fluids from accumulating anywhere on the surface.

The models are as follows:

**CF 100** model Non-elevating Right Side Approach

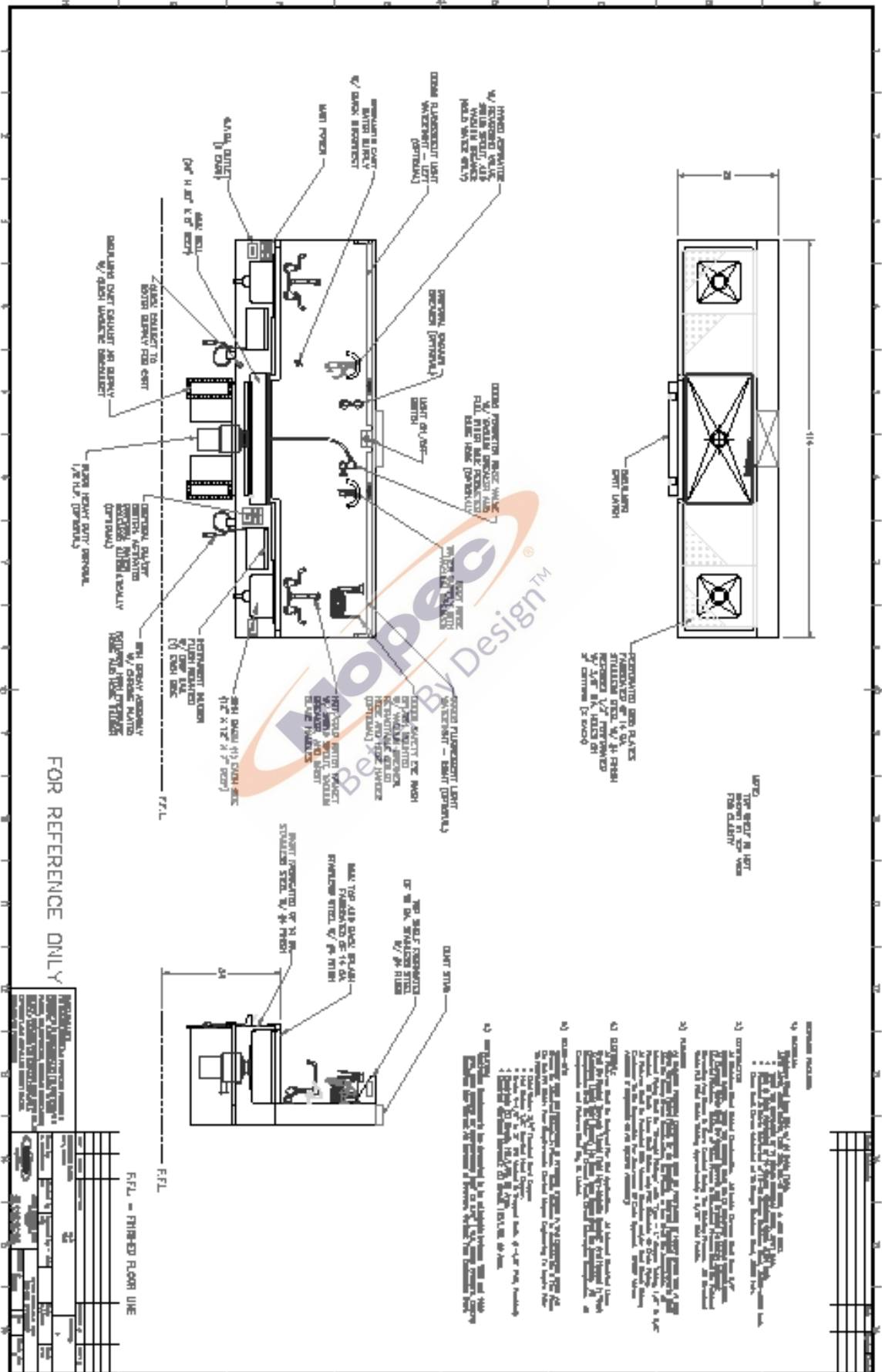
**CF 200** model Non-elevating Left Side Approach

**CF 300** model Non-elevating Center Approach

**The above series has the capability of an optional leg frame support**







## FEATURES

All units in the “CF” series consists of the following:

**Work Grid:** 14 Gauge, type 304 Stainless Steel with a # 4 Satin Finish  
**Housing:** 14 Gauge, Type 304 Stainless Steel with a # 4 Satin Finish  
**Electrical:** 115 v / 1ph / 60 Hz      Current Draw: 20 Amp maximum

All units have: 2 Perforated Removable Grid Plates  
1 or 2 G.F.C.I. Electrical Receptacle  
Embalming Cart Latch  
Water Fixtures w/Swing Spout (vacuum breaker protected)  
Top Shelf  
Duct Stub for in-house ventilation  
1 or 2 Instrument drawers  
Sink Well  
Embalming Cart Water Supply  
Embalming Cart Air Supply  
Sink Spray Assembly  
Hydro-Aspirator  
Wash Basin  
Hydro-Aspirator

Specific features on the following units:

### CF100 / CF200

Sponge Bowl  
Safety Eye Wash

### CF300

Fluorescent light (Watertight)  
Formalin & Distilled Water Fixture

Options for Specific units:

### CF100 / CF200

1 HP Disposal  
1/2 HP Disposal  
Fluorescent Light (Watertight)  
Formalin & Distilled Water Fixture  
Perimeter Rinse  
Leg Frame

### CF300

1 HP Disposal  
1/2 HP Disposal  
Safety Eye Wash  
Perimeter Rinse  
Leg Frame

## BL800: 1HP HEAVY DUTY DISPOSAL

Heavy Duty

Includes Solenoid to supply water directly into disposal

Vacuum Breaker to prevent back siphoning of water

On/Off switch

(Requires separate power circuit other than grossing station)



### Operation of Option

The BL800 disposal is an option for disposing of tissue and bone pieces that are not needed. There is no need to turn on the faucet when using the disposal. The disposal switch activates the disposal and allows water to enter the disposal from the electric solenoid. When the disposal is turned off, the water stops. The vacuum breaker prevents back siphoning of water through the disposal. The disposal option requires one 20 amp circuit dedicated to the disposal.

**DO NOT USE BLEACH OR OTHER CAUSTIC CHEMICALS IN THE DISPOSAL, THIS CAN DAMAGE THE UNIT. ENSURE ALL DISENFACTANTS ARE RINSED THOROUGHLY.**

## BL400: 3/4HP COMMERCIAL DUTY DISPOSAL

Commercial Duty

Includes Solenoid to supply water directly into disposal

Vacuum Breaker to prevent back siphoning of water

On/Off switch

(requires separate power circuit other than grossing station)



### Operation of Option

The BL400 disposal is an option for disposing of tissue and bone pieces that are not needed. The disposal switch activates the disposal and allows water to enter the disposal from the electric solenoid. When the disposal is turned off, the water stops. The vacuum breaker prevents back siphoning of water through the disposal. The disposal option requires one 20 amp circuit dedicated to the disposal.

**DO NOT USE BLEACH OR OTHER CAUSTIC CHEMICALS IN THE DISPOSAL, THIS CAN DAMAGE THE UNIT. ENSURE ALL DISENFECTIONANTS ARE RINSED THOROUGHLY.**



## CO001 Autopsy Sink Leg Frame

For CA100 & CB100, CF100 and CF200 Embalming Sinks only

304 Stainless Steel 1 5/8" diameter tube

Welded at junctions

Ground smooth and grained to match



## CO002 Autopsy Sink Leg Frame

For CC100 and CF300 Embalming Sinks only

304 Stainless Steel 1 5/8" diameter tube

Welded at junctions

Ground smooth and grained to match



## CO003 Sink Perimeter Rinse Assembly

Full perimeter rinse on all four sides of the sink at once  
Cold water on/off water control valve  
Serrated hose fitting to connect flexible vinyl tube  
Perforated formed stainless steel rinse tube  
Easily removed for cleaning



### **CO004 Gas Valve Splash Mount**

Not available on CA200, CB200 and CC200.

Laboratory gas fitting

1/4" turn on/off valve and serrated hose fitting.

(2) Required for CC100

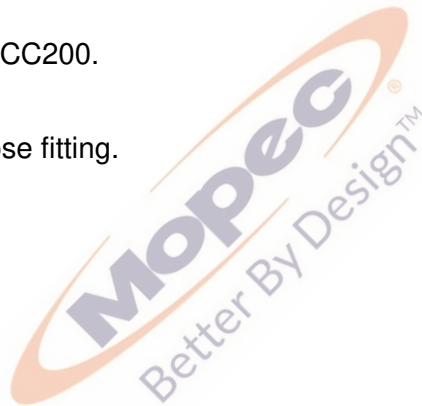
### **CO005 Air Valve Splash Mount**

Not available on CA200, CB200 and CC200.

Laboratory gas fitting

1/4" turn on/off valve and serrated hose fitting.

(2) Required for CC100



## CO006 Safety Eye Wash Splash Mount

Cold Water

Complete gentle eye spray head, self-recoiling hose and hose hanger.  
Vacuum breaker protected spray head



## CO007 Exhaust Duct – Outsourced

Ventilation exhaust ducting located over the dissection area of the embalming sinks. The 8" x 14" ventilation grill is routed through the back splash of the sink and is designed to remove pungent odors. Requires 300 CFM for proper ventilation



## CO008 Fluorescent Light Assembly

Dual 4' high output fluorescent light fixture encased in watertight plastic case.  
Watertight on/off switch.  
Easy lens removal for bulb changes.



**Mopec**  
Better By Design™

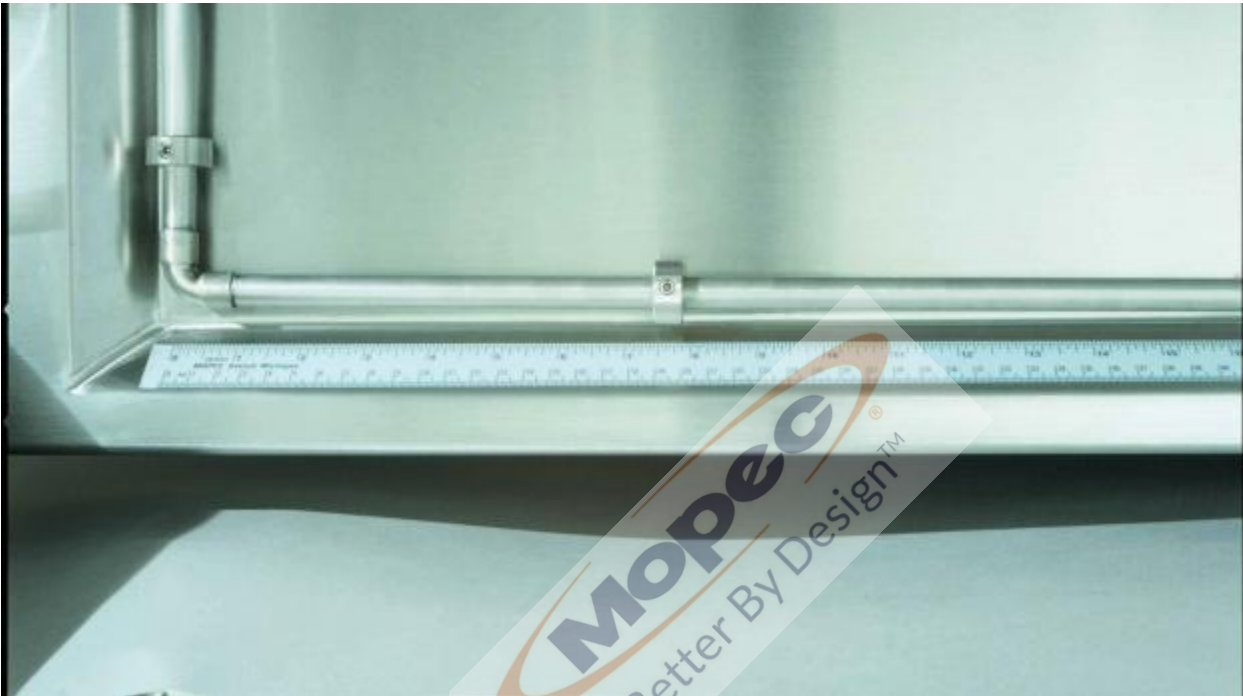
## CO012 Inch/cm Scale Removable

Adhesive Backed

Inch and MM Markings

Resistant to most chemicals

Replaceable





## CO016 Scale Stand Wall Mount

Wall mount bracket provided with 1 5/8" diameter cantilever weldment.  
Scale stand pivots from right to left and is secured in place with locking knob.

**Scale is purchased separately**



## CO020 Organ Rinse Basket

Designed to hang on the hot and cold water fixture, the organ rinse basket is made of stainless steel with a perforated bottom



## CO022 Evidence Screen

Designed for the C-Series Autopsy Sinks  
Stainless steel construction  
Pull handle



## AIR HANDLING

The CF- Series Embalming equipment consists of two distinct pieces of equipment; the Embalming sink and the Embalming cart. The embalming sink contains all the facilities connections utilized during the embalming process with the exception of the embalming pump. The Embalming cart is the method of supporting the body and most importantly is utilized to ventilate the body during the embalming process. The cart is designed with what is known as an open plenum ventilation system and is provided on both sides of the body.

The open Plenum ventilation system is considered to be a very effective method of ventilation relative to the CF Series equipment design parameters. Two full length plenum exhaust chambers effectively ventilate the cadaver during the embalming process. The ventilation chambers are independent of one another and lead to a common connection under the embalming sink. Once the cart is rolled and connected to the sink the plenums create a baffling effect between the cadaver and room atmosphere thus enhancing air flow efficiency.

Design parameters of the plenum chamber shall not exceed a width of 3" and shall maintain a minimum entrance dimension of 1.25 to 1.5 inches wide. Volumetric flow rates should be adjustable between 1000 and 1400 CFM (Cubic Feet per Minute) while allowing for approximately (0.5 to 0.75) in W.G. Static Pressure.

The above design parameters for the CF Series embalming equipment and suggested ventilation requirements are based on stringent ventilation requirements and ideal conditions. Personalized conditions and practices may warrant an increase or decrease of the ventilation.

Although the Mopec CF Series Embalming Equipment can help eliminate exposure, Mopec cannot assume responsibility of exposure since the system is an open environment and room conditions are uncontrollable.

If the Option CO007 is purchased the option requires 300 CFM and should be adjustable.

## CLEANING AND MAINTENANCE

### DISINFECTING AND CLEANING STAINLESS STEEL SURFACES

All stainless steel surfaces can be cleaned with soap and water, which will remove debris.

The stainless steel surfaces can be disinfected with a non-caustic disinfectant. We suggest using BE045 Path Cloud or BE047 Bench Wipe for cleaning purposes. We recommend you **NOT USE** a bleach solution to clean your unit. Bleach will eventually erode stainless steel if not thoroughly rinsed. **The use of chlorine bleach will VOID THE STAINLESS STEEL WARRANTY**

During the cleaning we suggest wiping the surface in the same direction as the satin finish which will help lift up dirt from the grain finish.

Most scratches can be removed simply by utilizing a "non-metallic" abrasive pad and rubbing in the same direction as the satin finish.

Since most abrasive pads vary from one supply to another, we suggest rubbing the entire surface to blend the scratch and blend the balance of the surface.

Plexi-glass surfaces will scratch if cleaned with an unsuitable cleaner and improper cleaning. Many plastic cleaners are available and we suggest using one. Wipe dry with a clean, absorbent cloth or paper towel turning often

### CLEAR DISPOSAL JAMS

The accidental entry of foreign material will cause any Waste Disposal unit to jam. To free jammed material, follow these steps **to avoid personal injury**.

1. Turn off Waste Disposal and shut off cold water.
2. Insert one end of your Self Service Wrench, provided with your Waste Disposal, into the center hole of the bottom of the disposer as shown (fig. 1).
3. Work the wrench back and forth until it moves freely for at least one complete revolution. **Remove the wrench before restarting the Disposal.**
4. Wait 3 to 5 minutes to allow Waste Disposal motor to cool and then push the reset button (fig. 1). **Be sure the main Disposal control switch is in the OFF position before pressing the reset button.**

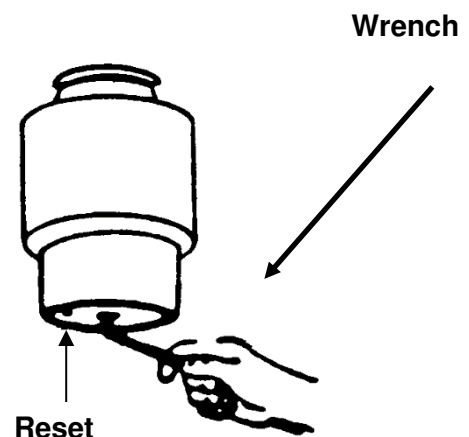
**Fig. 1**

### CLEANING DISPOSER

Over time, particles may accumulate in the grind chamber and baffle. An odor from the disposer is usually a sign of buildup, caused by insufficient water flow during and after disposer use.

To clean disposer:

1. Turn off disposer
2. Place stopper in sink opening and fill sink halfway with warm water.
3. Mix 1/4 cup baking soda with water. Turn disposer on and remove stopper from sink at same time to wash away loose particles.
4. Remove Quiet Collar Sink Baffle and clean by hand or in dishwasher. Do not operate disposer without Quiet Collar Sink Baffle in place.



## STAINLESS STEEL CARE AND MAINTENANCE

To maintain your stainless steel product, follow these four steps:

1) **Never, ever use wire brushes, Brillo, steel wool or abrasive cleansers (like Ajax or Comet).** If something needs to be aggressively cleaned only use a Scotch-brite pad or similar product and only scour with the "grain" of the stainless. As an example, please reference the photo on page 2 of this document. It is clear that a very abrasive product was used in an area on the unit and that did not follow the grain of the stainless. The effects of this scratching may diminish over time with proper care but the effects of this scouring are obvious. (The use of the Scotch-brite Pad following the grain over time may help scratches such as this). Depending on the surface finish of your stainless steel, abrasive cleaners can cause scratching. Duller finishes probably won't show scratching as much as mirror or highly polished finishes. When in doubt, test in a hidden spot, and also work from the least risky type of cleaning, (i.e. water) to the heavy duty stuff.

**Do not use cleaners containing chlorine.** While it may be second nature to bleach everything, stainless steel and chlorine do not mix well. Do not use bleach when cleaning stainless steel. Do not allow bleach or bleach water to sit for long periods. Bleach can eventually cause staining and pitting. Bleach stains are removed with stainless steel cleaning polish.

2) **Keep the surface clean of grime, tissue and particulates.** This can be accomplished by using the "Water Hand Spray Rinse" and use of cleaning products.

3) **Rinse the surface after using disinfectant.** In Pathology and other medical areas the act of disinfecting is desired. There are a number of ways to do this including using Mopec's Bench Spray & Wipe Disinfectant. Labs use any number of different products including 10% bleach or other disinfectant sprays and wipes. For the most part, each and every one of these has high salt contents and lower PH levels to aid with disinfection. Most disinfectants must be followed up with a water rinse to remove the salts that remain after these products dry. We advise to always follow up a disinfection cleaning with a thorough rinse of water. We advise not to use diluted bleach, if you must; we stress the importance of a thorough rinse of water after use. If not rinsed properly, these salts can become visible after the disinfectant dries. They can appear with a whitish characteristic or contain light lines of white with a grainy feel when you wipe your hand across the work surface. If these residues are not removed with a thorough water rinse and wipe down they will accumulate and eventually degrade the appearance and integrity of your stainless surface. Rust is a long term possibility if salts are allowed to remain on the work surfaces over time. Gritty, dirty water or residue from cleaning solutions left on a stainless steel surface can stain or damage the finish.

4) **All stainless steel products should be protected by a polish.** As a prime example before any product leaves Mopec it is coated with WD-40 as a protecting coating for the stainless. Mopec offers a Stainless Steel Cleaner and Polish in both wipe and spray. These Mopec products will not only deep clean your stainless but will also protect their finish from chemical, low PH and salt and keep the finish looking like new.

### Decal

Mopec advises that if the technicians are not taking the proper precautions when using the Decal solution the possibility of two things will occur, a brown or rust ring where the Decal resides along with a milky white substance on the surface. (As an example, reference the below photos to see the rust rings.) Decal is very harsh, even the fumes can and will cause staining on stainless steel. One thing that you might want to consider doing is to place the Decal container you currently use inside a plastic base that will help catch drips that might occur. Clean and rinse your station after every use of Decal solution.

### Rust

Rust can and will occur on stainless if it is not maintained properly. The most common cause of rust is from using metal or stainless racks that are not made of 304 stainless. This is referred to as "transfer rust". Leaving of salts from cleaners or disinfectants can and will lead to possible rust areas in the long term. Always rinse all disinfectants before they dry. Decal solutions and even fumes are very aggressive and can cause rust if not cleaned up and used properly around stainless. Formalin use has not been shown to cause rust in any way.

### Conclusions & Suggestions

We are confident and can assure you that if you institute the suggestions detailed above that your Mopec Grossing station will look as it did the day it arrived.

**Do not assume it's the cleaner.** If you do have some spotting or staining, and you've followed all of the suggestions, it may not be the cleaner. Water, especially hard water, can leave spotting and staining on stainless steel surfaces. Hard water can leave mineral deposits, resulting in whitish-colored spots and streaks. Remove hard water stains with vinegar or with stainless steel cleaning polish. Prevent hard water stains by towel-drying after every wash. Do not allow soaps and cleaners to dry on surfaces. The chemicals in many soaps and cleaners can cause staining. Never use corrosive cleaners such as mineral spirits. Use stainless steel cleaning polish and a non-abrasive scrub pad to remove dried cleaner stains. Baking soda mixed with liquid dish soap can make a good paste to gently rub on stains. Be sure to rinse the stainless steel surface thoroughly, and towel dry. If stains remain Mopec recommends trying a stainless steel cleaner and polisher. Barkeeper's Friend is a good powder formula that can clean without scratching. Be sure to follow the directions, rinse thoroughly, and towel dry. These methods should help remove any discoloration.

**Fingerprints and Stains** – The most common surface contaminates that occur from normal use are fingerprints and mild stains. These usually affect only appearance so fortunately they do not have an effect on corrosion resistance. They can easily be removed by a variety of simple cleaning methods. The most troublesome marks to remove from the surface of smooth polished or bright finished stainless steel are fingerprints; fortunately they can be removed with a common glass cleaner or by gently rubbing with a paste of soda ash (sodium carbonate) and water which would be applied with a soft cloth. Again, it is best to follow with a warm water rinse.

**Clean Water and Wipe** – The method that will do an adequate job and is the simplest, safest and the least costly is the best method. There is no surface coating to wear off of stainless steels so the surface will thrive with frequent cleaning. The first choice to clean mild stains and loose dirt and soil should always be a soft cloth and clean, warm water. Rinsing with clean water and wiping the surface dry will finish the process and eliminate the possibility of water stains.

**Solvent Cleaning** – To remove oils, greases and fresh fingerprints that have not had time to oxidize or decompose, use a solvent that does not contain chlorine. There are many organic cleaners on the market today that optimize safety attributes and clean ability. Spray or vapor methods or by wiping with clothes containing solvents can also clean surfaces. The wiping technique will sometimes leave the surface streaked.

### **Scratch Repair**

A surface scratch can be repaired using the following technique. Completely removing the scratch will depend on how severe it is. Use 120 grit emery cloth or paper and firm pressure to sand the scratch. Sanding must always go in the direction of the grain. Sand in a perfectly straight line, avoiding the natural tendency to sand in an arc. Sand the surface until the scratch is gone. Polish using a very fine grade of 3M scotch-brite pads. Use the same motions as with sanding. Polish the surface until the original finish is restored.

For stubborn spots, stains, light discoloration, water marking or light rust staining use a mild, non-scratching cream or polish. Apply with soft cloth or soft sponge and rinse off residues with clean water and dry. Avoid cleaning pastes with abrasive additions. Suitable cream cleansers are available with soft calcium carbonate additions, or with the addition of citric acid. Do not use chloride or acidic solutions Nylon abrasive pads should be adequate for dealing with most deposits (DO NOT USE STEEL WOOL OR BRILLO PADS). If a more severe treatment is needed to mask coarse scratches or physical damage on a surface, use the finest abrasive medium consistent with covering the damage marks. With directional brushed and polished finishes, align and blend the new "scratch pattern" with the original finish, checking that the resulting finish is aesthetically acceptable. Silicon carbide media may be used, especially for the final stages of finishing. Avoid using hard objects such as knife blades and certain abrasive/souring agents as it is possible to introduce surface scuffs and scratches. Scratching is particularly noticeable on sink drainer areas. These are usually superficial and can be removed with proprietary stainless steel cleaners or, alternatively, with a car paint restorer, such as 'T-cut'. Rust marks or staining on stainless steels is unlikely to be the result of corrosion to the stainless steel itself (similar marks may also be found on porcelain and plastic sinks). These marks are likely to result from small particles of carbon steel from wire wool.

## PREVENTITIVE MAINTENANCE CHECKS

### Procedure:

1. Visually check the exterior of equipment for any signs of damage.
2. Visually check the condition of the power cord and plug(s) for cracks, cuts, bare or broken wires and signs of excessive heat (discoloration).
3. Visually inspect electronics for signs of damage and/or overheating.
4. Ensure all the receptacles and covers are operating properly (testing GFCI).
5. Verify correct operation of unit including all controls, buttons, displays and indicators when applicable.
6. Visually check for leaks, dry rotted hoses, or electrical issues under the table.
7. Check all water fixtures.
8. Clean exterior of unit.
9. Complete paper work of inspection and file in appropriate file for future reference. Complete and affix an inspection sticker, when applicable.
10. Return the unit to service.





## LIMITED WARRANTY

Products manufactured by Mopec will be free from defects in material and workmanship and conform to Mopec's description or specifications. If a warranty claim is made within one (1) year from the earlier of the date of acceptance/first beneficial use, the defective or nonconforming Product or Part thereof will be repaired or (at Mopec's option) replaced free of charge, FCA Mopec's dock. All warranty claims must be in writing and received by Mopec within the warranty period. The warranty is not transferable (other than to customers of Mopec's authorized Distributors), and will not apply unless the Equipment has been properly installed, maintained and operated in accordance with all instructions; and does not apply to defects, nonconformities or other failure due to Equipment misuse, abuse, modifications, or other causes outside Mopec's control. If a warranty claim is made in writing within the warranty period, the defective or nonconforming Equipment (or Part thereof) will be repaired or (at Mopec's option) replaced free of charge, FCA Mopec's dock.

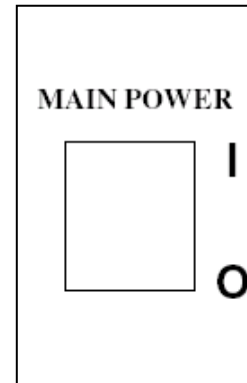
**THERE ARE NO WARRANTIES WHICH EXTEND BEYOND THE DESCRIPTION ON THE FACE HEREOF. THE WARRANTY AS SET FORTH HEREIN IS IN LIEU OF ALL OTHER WARRANTIES, EXPRESS OR IMPLIED, INCLUDING ANY IMPLIED WARRANTY OF MERCHANTABILITY OR FITNESS FOR A PARTICULAR PURPOSE.**

To the extent that Mopec is acting as a supplier of Products manufactured by a third party, the Products will be warranted only to the extent that they are warranted by their manufacturers and Buyer (or its customer) agrees to look solely to the Product manufacturer for all warranty claims.

*MOPEC, 21750 COOLIDGE HIGHWAY, OAK PARK, MI 48237*

## SAFETY LABELS

**BEFORE SERVICING THE UNIT LOOK FOR AND HEED THE FOLLOWING LABEL**



## TROUBLE SHOOTING

### Problem

My Unit does not turn on

### Possible Solution

Assure your facility circuit breaker has not been tripped.

Assure the G.F.C.I. has not been tripped (off) –  
Reset to on.

My unit does not elevate

Assure your facility circuit breaker has not been tripped.

Assure the G.F.C.I. has not been tripped (off) –  
Reset to on.

MB600/MB670 units ensure the doors are closed.

My unit's faucets do not work

Assure the water valve from your facility is on.

My hand spray does not work

Assure the water valve from your facility is on.

Assure the concealed shut off valves to the  
hand spray are on.

Assure hose is not kinked.

My disposal is not working

Assure your facility circuit breaker has not been tripped.

Assure the G.F.C.I. has not been tripped (off) –  
Reset to on.

Reset circuit breaker on the bottom of disposal  
or switch box for the disposal.

# Certificate



Certificate no.

CU 72041125 01

**License Holder:**  
 Mopec, Inc.  
 21750 Coolidge Hwy  
 Oak Park MI 48237  
 USA

**Manufacturing Plant:**  
 Mopec, Inc.  
 21750 Coolidge Hwy  
 Oak Park MI 48237  
 USA

Test report no.: USA-GB 30471065 001

Client Reference: Rick Bell

Tested to: UL 61010-1:2004  
 CAN/CSA-C22.2 61010-1:2004  
 NFPA 79:2002

Certified Product: Grossing Station

License Fee - Units

Model Designation: MMBXXXX  
 (X= 0-9, A-Z, = not safety-relevant)

7

Rated Voltage: AC 115V, 60Hz  
 Rated Current: 20A  
 Protection Class: I

Special Remarks: To be installed according to the licensee's installation instructions.

7

Appendix: 1

Licensed Test mark:



Signatures

Date of Issue  
 (day/mo/yr)  
 04/02/2005

*S. Schmitt*  
 Stephan Schmitt  
 President

*M. Raap*  
 Dipl.-Ing. M. Raap  
 QA Certification Officer

TUV Rheinland of North America, Inc., 12 Commerce Road, Newtown, CT 06470. Tel (203) 426-0688 Fax (203) 426-4009



Better By Design™

21750 Coolidge Highway • Oak Park, MI 48237 USA  
+1 800-362-8491 • 248-291-2040 • Email: info@mopec.com

2015 Mopec all rights reserved

