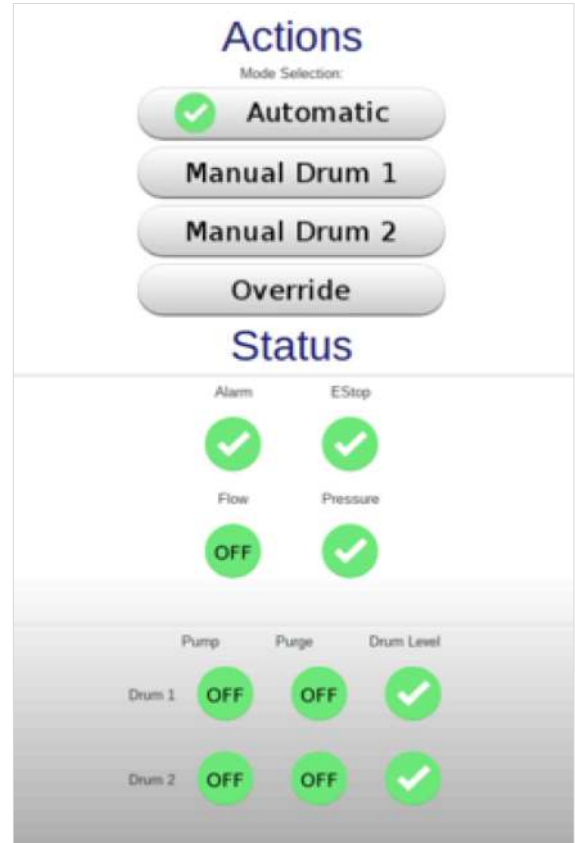


Formalin Pumping Station

The FP100 Formalin Pump Station is a pressurized, facilities-level formalin dispensing/distribution station designed to provide multiple workstations with buffered formalin. Our standard station transfers 10% formalin stock from easily replaceable 30 or 55 gallon drums directly to formalin faucets.



SPECIFICATIONS

Construction

- All stainless steel construction
- Spill containment with removable non-slip grid

Dimensions

- 60.0" L x 29.2" W x 74.0" H

Electrical

- 115v/1ph/60Hz 20amp
- Optional voltage for export 230v/1ph/50Hz 10amp

Performance

- Designed to provide multiple workstations with buffered formalin
- Containment pan accommodates both 30 & 55 gallon drums
- Dual pump system
- Formalin fluid level sensing with low formalin/drum level alarm

- Low pressure alarm
- All alarms visual & audible

Controls

- 7" Touch screen display with system status icons
- Emergency stop button with indicator

Compatibility

- 30 gallon drums
- 55 gallon drums

Optional Features

- Dry contacts for remote alarming
- Remote E-Stop with buzzer
- Ramp with manual hand crank
- Custom configurations available for systems greater than two drums
- Drums provided by others



www.mopec.com

800.362.8491

21750 Coolidge Hwy.

Oak Park, MI 48237